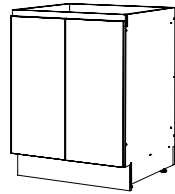


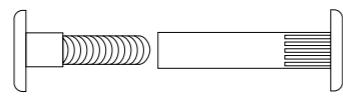
Easy Installation

Our cabinets are fully built and delivered ready for installation (we recommend installation by a builder or tradie).

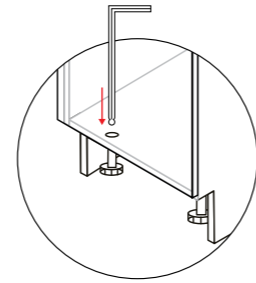
Download the Laundry Installation & Warranty Booklet at www.adpaustralia.com.au/installation-warranty



Individual cabinets arrive fully assembled and ready to install.



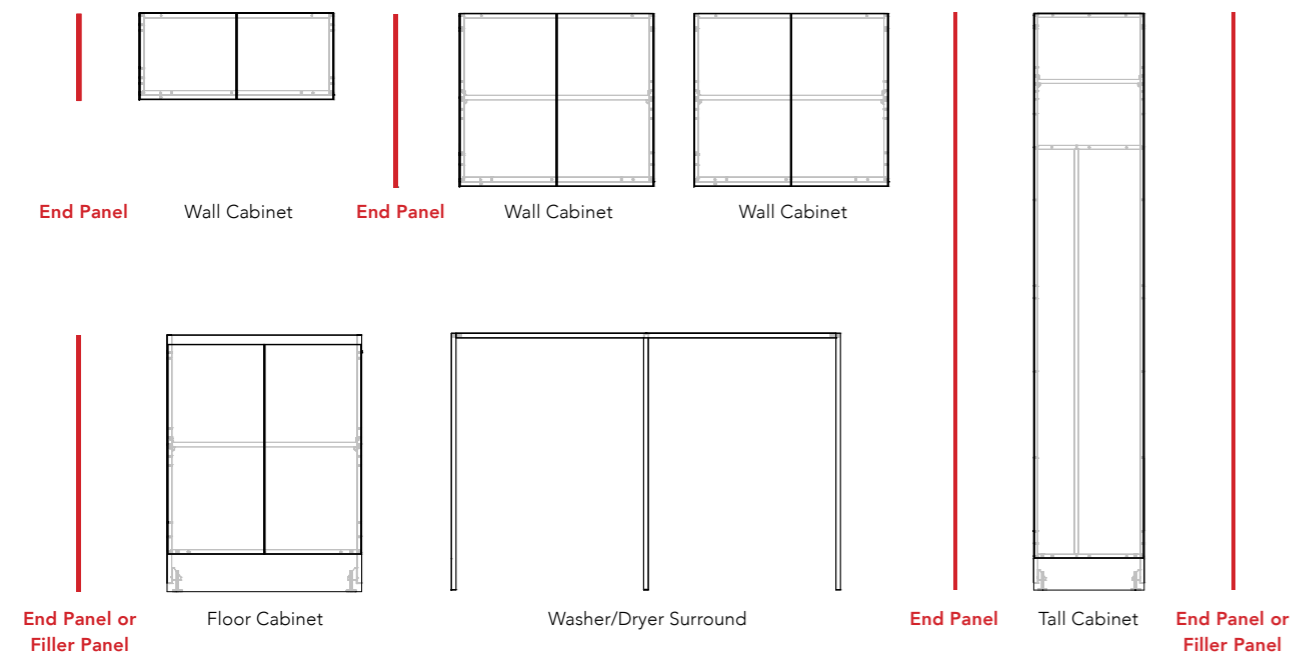
Cabinet Connectors make installation simple.



Adjustable metal feet are provided for easily adjusting cabinet levels. Adjustments can be made 30mm up or down.

End Panels and Filler Panels

Where to use End Panels and Filler Panels in your Modular Laundry



Where to use End Panels:

- If the side of a cabinet is exposed (i.e. not next to another cabinet or against a wall).

Where to use Filler Panels:

- If a cabinet is against a wall or between walls.

Where to use Wide Filler Panels:

- If your filler panel needs to be wider than 16mm.

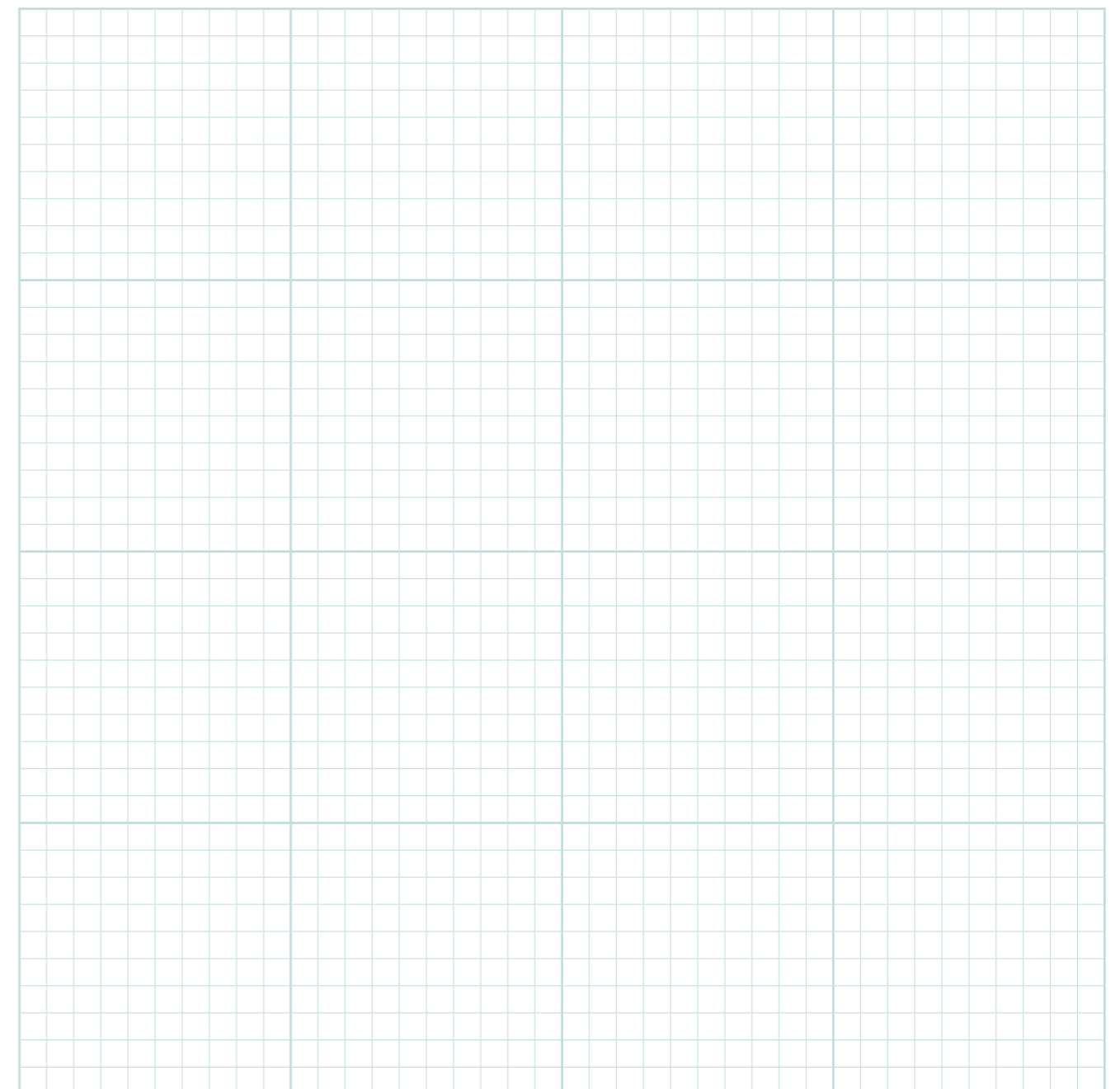
Plan Your Laundry

Things to Keep in Mind

- Locations of existing and future power points, plumbing, light fixtures etc.
- Check if the floor is level.
- The amount of room that doors and windows need to open.
- The size of your washing machine and dryer.
- Access points for installation - where will the cabinets be carried in from?

What to Measure in your Laundry

- Overall size of laundry.
- Floor to ceiling - we offer cabinets to suit different ceiling heights.
- Wall to wall. Don't forget to allow for tiles if the walls haven't been tiled yet.
- Size and location of doors and windows.
- Waste and/or pipe positions.



Notes



1850mm Package Decor with Open Shelf
Overall Laundry Size: 1850 (W) x 2050 (H) x 610 (D) mm
Cabinet Finish: Classic Oak Nuance (textured woodgrain).
Benchtop & Splashback: Sugar Cream Cherry Pie 20mm.