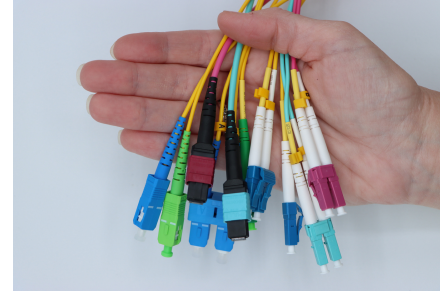


MTP® /MPO Patch Cord Universal Spec Sheet

- Extreme Performance
- Bend Insensitive
- For Use Indoors
- Certified by trueFIBER



Available in:

- MM MTP
- SM MTP
- 5 packs

Key Features

- 100% factory tested for return loss and insertion loss
- 100% factory inspected end faces
- Elite Low Loss MTP Flat Ferrule
- OFNP (Plenum) rated cable jackets will not promote the spread of flame
- PC end face polishes
- Available in OM4 MMF, OM3 MMF and OS2 APC SMF
- MTP-12 also supports MTP-8 fiber systems, it is also ideal for 8-fiber parallel multimode optical transceiver applications.
- Local Area Network & Data Center applications
- Tight buffer construction
- Ultra high performance Corning® fiberglass core and cladding
- All connectors have standard boots for strain relief

Make Indoor Ethernet equipment patch connections at light speed! Fully compliant with ANSI/TIA, IEC, and ITU-T standards, trueFIBER pre-connectorized optical fiber MTP patch cables with PC end polishes to suit any patching need. Further, fiber optic patch cords are available in multiple lengths up to 30m (98 feet) and multi-pack quantities. Our patch cords are ideal for 10 gigabit to 100 gigabit applications depending on equipment and distance. Each MTP patch cord is individually packaged to protect against contamination of the connector ferrule and end face. Optical performance test results are printed on the package label.



Physical & Mechanical Characteristics

	MTP - MTP OS2	MTP - MTP OM3/OM4
Fiber Count Connector Type End Face Polish	12 Fiber MTP unpinned (Female) to MTP unpinned (Female) PC Polish	12 Fiber MTP unpinned (Female) to MTP unpinned (Female) PC Polish
Polarity	Type A and Type B	Type B
Connector Ferrule	Elite Low Loss MTP Flat Ferrule	Elite Low Loss MTP Flat Ferrule
Fiber Core Cladding Diameter	9/125µm	50/125µm
Cable Jacket Outside Diameter (OD)	3.0mm	3.0mm
Cable Jacket Material	Plenum Rated Non Conductive (OFNP)	Plenum Rated Non Conductive (OFNP)
Cable Jacket Color	OS2: Yellow	OM3: Aqua OM4: Violet
Connector Color	OS2 (Yellow)	(OM3 (Aqua) OM4 (Violet)
Fiber Grade	ITU-T Rec. G.652.D Ultra low loss Corning® SMF-28® OS2	OM3: IEC 60793-2-10 Type A1 OM3 / TIA 492AAAC-B Corning® ClearCurve® ultra-bendable, laser optimized™ OM4: IEC 60793-2-10 Type A1-OM4 / TIA 492AAAD Corning® ClearCurve® ultra-bendable, laser optimized™
Minimum Bend Radius	20D/10D (Dynamic/Static) 10.00mm for core	20D/10D (Dynamic/Static) 7.50mm for core
Minimum Pull Tension	50 ft-lbs	50 ft-lbs



Environmental Characteristics

Operating Temperature	-40~75°C -40~167°F
Storage Temperature	-40~85°C -40~185°F

Optical Performance Characteristics

	OS2	OM3/OM4
Wavelength	1310 1550nm	850 1300nm
Attenuation @Wavelength (dB/km)	0.32 0.18 dB/km	3.0 1.0 dB/km
Insertion Loss	≤0.35dB	≤0.35dB
Return Loss	≥ 60dB	≥ 25dB

Maximum data transmission speed and/or distance is dependent upon Ethernet protocol in use and optical equipment.

Industry & Regulator Compliances

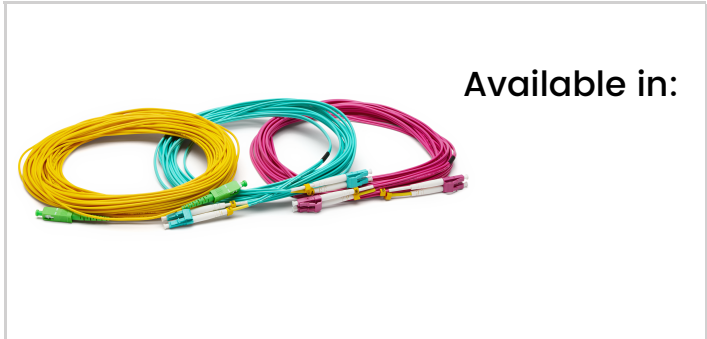
UL	RoHS
ANSI/TIA	TIA 568.3-E
ITU-T Rec. G.652.D	ANSI/TIA
ANSI/TIA 492AAAD	IEC 61754
IEC 60793-2-10	IEC 61300-3-35

-  **EMI/RFI Immune**
-  **Indoor Application**
-  **100% End Face Inspected**
-  **100% Performance Inspected**
-  **Data Center, Enterprise Ready**



MTP® /MPO Patch Cord Universal Spec Sheet

Certified by trueFIBER



Available in:



Cable ID: 010B
Date / Time: 09/13/2021 03:01:54
PM Cable Type: OS2 Singlemode

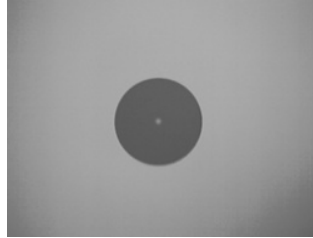
n = 1.467000 (1310 nm)
n = 1.468000 (1550 nm)

Test Summary: PASS
Backscatter Coefficient: -79.5dB (1310 nm)
Backscatter Coefficient: -82.0dB (1550 nm)

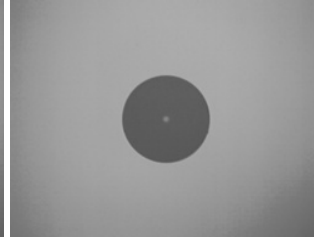
Endface Image End1

PASS
Test Limit: IEC 61300-3-35 ED.2 SM
RL>=45dB
Limits Version: 7.6
Date / Time: 09/13/2021 02:06:42
PM Versiv
S/N: 18028056
Software Version: V6.6 Build 2
Probe: FI-1000

End1



End2



Endface Image End2

PASS
Test Limit: IEC 61300-3-35 ED.2 SM
RL>=45dB
Limits Version: 7.6
Date / Time: 09/13/2021 02:08:09
PM Versiv
S/N: 18028056
Software Version: V6.6 Build 2
Probe: FI-1000

Loss (R->M)

PASS
Test Limit: TIA-568.3-D-1 Singlemode ISP (REF)
Limits Version: 7.6
Date / Time: 09/13/2021 03:01:54 PM
Main: Versiv
S/N: 18028056
Software Version: V6.6 Build 2
Module: CertiFiber Pro (CFP-QUAD)
S/N: 2475004
Calibration Date: 07/15/2013
Remote: Versiv
S/N: 17510098
Software Version: V6.6 Build 2
Module: CertiFiber Pro Remote (CFP-QUAD)
S/N: 2447618
Calibration Date: 06/27/2013

Propagation Delay (ns)	19	
Length ft	13	PASS
Limit 131234		
Result	1310 nm	1550 nm
Loss (dB)	PASS	PASS
Limit (dB)	0.36	0.07
Margin (dB)	1.00	1.00
	0.64	0.93
Reference (dBm)	-3.20	-3.14

Number of Adapters: 2
Number of Splices: 0
Connector Type: LC
Patch Length1 (ft): 7
Reference Date: 09/13/2021 02:56:04 PM
1 Jumper

Loss (M->R)

PASS
Test Limit:
Limits Version:
Date / Time:

	1310 nm	1550 nm
Result	PASS	PASS
Loss (dB)	0.15	0.10
Limit (dB)	1.00	1.00
Margin (dB)	0.85	0.90
Reference (dBm)	-2.72	-3.13

Compliant Network Standards:

- | | | |
|----------------------------|---------------------------|----------------------------|
| 100GBASE-LX | 100GBASE-ER4 | 100GBASE-LR4 |
| 10GBASE-E | 10GBASE-L | 10GBASE-LRM |
| 10GBASE-LX4 | 40GBASE-ER4 | 40GBASE-FR |
| 40GBASE-LR4 | Fibre Channel 100-SM-LC-L | Fibre Channel 1200-SM-LC-L |
| Fibre Channel 1600-SM-LC-L | Fibre Channel 200-SM-LC-L | Fibre Channel 400-SM-LC-L |
| Fibre Channel 400-SM-LC-M | Fibre Channel 800-SM-LC-I | Fibre Channel 800-SM-LC-L |