

trueCLEAN LC/MU & SC/ST/FC Click Cleaner

Versatile • Compliant • Certified by trueFIBER



Available in:

- SC/ST/FC
- LC/MU

Key Features

- Captive dust cap
- Extendable wand for hard to clean bulkhead connectors
- Visible indicator for remaining cleaning tape
- Pen style

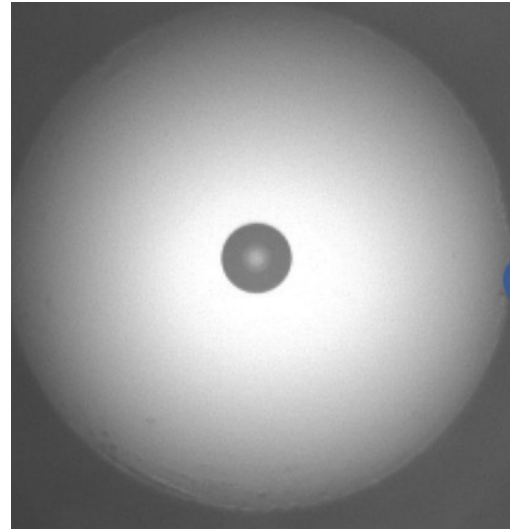
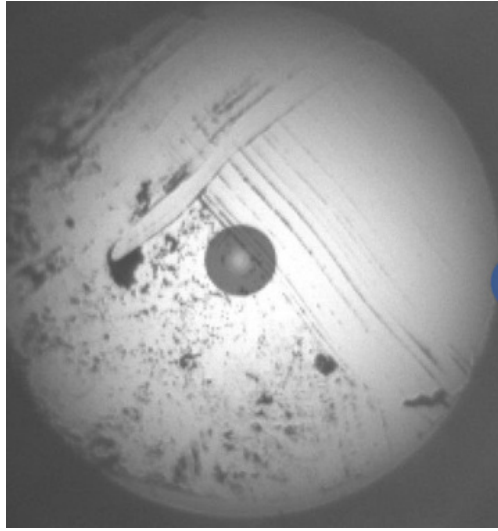
Have you cleaned your end face today? trueCLEAN can improve your optical performance and even help prevent equipment damage!

Detailed Specifications

	trueCLEAN LC/MU	trueCLEAN SC/ST/FC
Connector Form Factor	1.25mm LC and MU	2.50mm SC/ST/FC
Connector Type Compatibility	Bulkhead / Coupler / Male Connector	
End Polish Compatibility	UPC or APC	
Tool Construction	Anti-static ABS	
Cleaning Method	Click advance dry tape	
Target Contaminants	Dust / Oil / Moisture	
Extendable Wand	Dual position cleaning probe extends from 2.38" to 3.63"	
Service Life	800 activations	

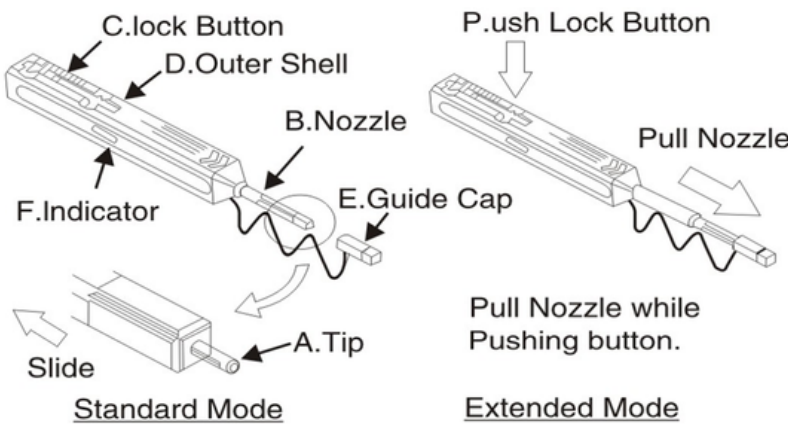


Before and after end face pictures, after just one activation!



The last thing you want in your fiber optic network is signal loss. The primary cause of signal loss is dirty bulkhead connectors and end faces. To make the situation worse, plugging a dirty component into another can damage fiber optic cable and even expensive equipment. Water, oil, and dust are your sworn enemy in the fiber optic world. The way to avoid this is to judiciously clean all connector ferrules and female connectors with the right weapon. Our trueFIBER one click cleaner makes this process simple, efficient, and cost effective. Do yourself a favor, don't risk down time or equipment damage and add this to your tool kit.

General Construction & Use



	View of Indicator	View of the Nozzle end
Full	Cloth (White)	Tip(Black)
Little	Cloth (White) Red	Cloth (white)
Empty	Red	Tip(Black) No Cloth (Black)

Identification of remaining cloth

