

1 & 12 Fiber Pigtail Universal Spec Sheet

- Extreme Performance
- Bend Insensitive
- High Quality Ceramic Ferrules
- For Use Indoors
- Certified by trueFIBER

Available in:

- 1 Fiber & 12 Fiber:
 - LC UPC
 - SC UPC
 - LC APC
 - SC APC

Key Features

- PVC LSZH Flame-retardant Fiber Optic Cable with Tight-buffered Coating on Each Optical Fiber
- G.657.A1 Bend Insensitive Fiber & 10mm Min. Bend Radius
- Optical Testing Guarantees Insertion Loss and Returns Loss
- Pass All IEC-61754 and TIA-604 (FOCIS) Performance Requirements
- Support Both Fusion and Mechanical Splicing for Fiber Cabling Systems
- Corning SMF-28® Ultra Fiber with 10mm Min. Bend Radius
- UL Listed, IEC Certified, ANSI/TIA 568.3-E Compliant

Make Indoor Ethernet equipment patch connections at light speed! Fully compliant with ANSI/TIA, IEC, and ITU-T standards, trueFIBER pre-connectorized optical fiber patch cords come in multiple fiber types, connectors, and end polishes to suit any patching need. Further, fiber optic patch cords are available in multiple lengths up to 30m (98 feet) and multi-pack quantities. Our patch cords are ideal for 1 gigabit to 400 gigabit applications depending on equipment and distance. Each patch cord is individually packaged to protect against contamination of the connector ferrule and end face. Optical performance test results are printed on the package label.



Physical & Mechanical Characteristics

	1 Fiber Pigtails	12 Fiber Pigtails
Fiber Count Connector Type End Face Polish	1 Simplex SC UPC 1 Simplex LC UPC 1 Simplex SC APC 1 Simplex LC APC Unterminated	12 Fiber Simplex LC UPC 12 Fiber Simplex SC UPC 12 Fiber Simplex LC APC 12 Fiber Simplex SC UPC Unterminated
Connector Ferrule	Zirconia ceramic LC > 1.25mm SC > 2.50mm	Zirconia ceramic LC > 1.25mm SC > 2.50mm
Fiber Core Cladding Diameter	9/125µm	9/125µm
Cable Jacket Outside Diameter (OD)	0.9mm	0.9mm
Cable Jacket Material	LSZH (low smoke zero halogen)	LSZH (low smoke zero halogen)
Pigtail Color	Yellow	12 Color
Fiber Grade	Corning® SMF-28® Ultra G.657.A1 (Compatible with G.652.D)	Corning® SMF-28® Ultra G.657.A1 (Compatible with G.652.D)
Minimum Bend Radius	20D/10D (Dynamic/Static) 10.00mm for core	20D/10D (Dynamic/Static) 10.00mm for core
Minimum Pull Tension	50 ft-lbs	50 ft-lbs

Environmental Characteristics

Operating Temperature	-20~60°C -4~140°F
Storage Temperature	-20~60°C -4~140°F




Optical Performance Characteristics

	1 Fiber Pigtail	12 Fiber Pigtail
Wavelength	1310 1550nm	1310 1550nm
Attenuation @Wavelength (dB/km)	≤ 0.03dB/km	≤ 0.03dB/km
Insertion Loss	≤0.3dB	≤0.3dB
Return Loss	UPC: ≥ 55dB APC: ≥ 60dB	UPC: ≥ 55dB APC: ≥ 60dB

Maximum data transmission speed and/or distance is dependent upon Ethernet protocol in use and optical equipment.

Industry & Regulator Compliances

UL	RoHS
ANSI/TIA	568.3-D
ITU-T Rec. G.652.D	ANSI/TIA 492AAAC-B
ANSI/TIA 492AAAD	IEC 61754
IEC 60793-2-10	IEC 61300-3-35

-  **EMI/RFI Immune**
-  **Indoor Application**
-  **100% End Face Inspected**
-  **100% Performance Inspected**
-  **FTTH**



1 & 12 Fiber Pigtail Universal Spec Sheet

Certified by trueFIBER

- Available in:
- 1 Fiber & 12 Fiber:
 - LC UPC
 - SC UPC
 - LC APC
 - SC APC



Cable ID: UPC SC SINGLEMODE PIGTAIL
Date / Time: 11/28/2023 04:55:55 PM

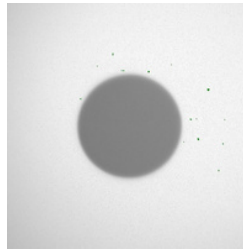
Test Summary: PASS

Endface Image End1

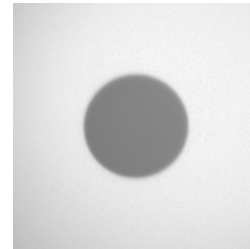
PASS

End Type: 1x1 1 Fibers
Test Limit: IEC 61300-3-35 ED.2 SM RL>=45dB
Limits Version: 7.8
Date / Time: 11/28/2023 04:55:55 PM
Operator: BEN HAMLITSCH
Versiv
S/N: 22413214
Software Version: V6.9 Build 2
Probe: FI-3000
S/N: 19090081
Software Version: v2.1.1

Defects



Raw Image



LinkWare™ PC Version 11.3

1 & 12 Fiber Pigtail Universal Spec Sheet

Certified by trueFIBER

Available in:

- 1 Fiber & 12 Fiber:
 - LC UPC
 - SC UPC
 - LC APC
 - SC APC



Cable ID: UPC LC SINGLEMODE PIGTAIL
Date / Time: 11/28/2023 05:08:12 PM

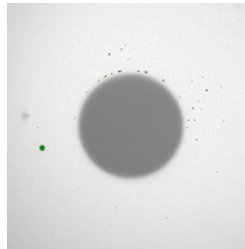
Test Summary: PASS

Endface Image End1

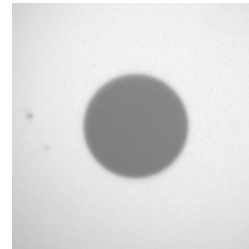
PASS

End Type: 1x1 1 Fibers
Test Limit: IEC 61300-3-35 ED.2 SM RL>=45dB
Limits Version: 7.8
Date / Time: 11/28/2023 05:08:12 PM
Operator: BEN HAMLITSCH
Versiv
S/N: 22413214
Software Version: V6.9 Build 2
Probe: FI-3000
S/N: 19090081
Software Version: v2.1.1

Defects



Raw Image



LinkWare™ PC Version 11.3

1 & 12 Fiber Pigtail Universal Spec Sheet

Certified by trueFIBER

Available in:

- 1 Fiber & 12 Fiber:
 - LC UPC
 - SC UPC
 - LC APC
 - SC APC



Cable ID: APC SC SINGLEMODE PIGTAIL
Date / Time: 11/28/2023 05:09:21 PM

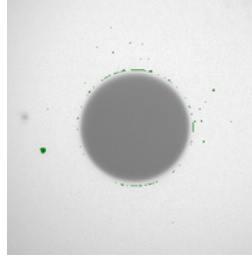
Test Summary: PASS

Endface Image End1

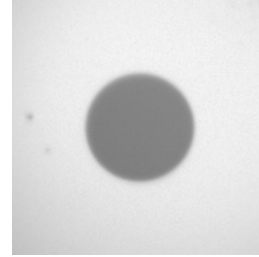
PASS

End Type: 1x1 1 Fibers
Test Limit: IEC 61300-3-35 ED.2 SM RL>=45dB
Limits Version: 7.8
Date / Time: 11/28/2023 05:09:21 PM
Operator: BEN HAMLITSCH
Versiv
S/N: 22413214
Software Version: V6.9 Build 2
Probe: FI-3000
S/N: 19090081
Software Version: v2.1.1

Defects



Raw Image



1 & 12 Fiber Pigtail Universal Spec Sheet

Certified by trueFIBER

Available in:

- 1 Fiber & 12 Fiber:
 - LC UPC
 - SC UPC
 - LC APC
 - SC APC



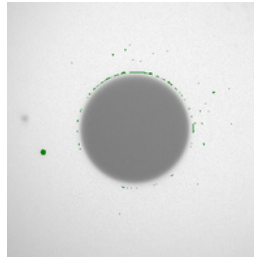
Cable ID: APC LC SINGLEMODE PIGTAIL
Date / Time: 11/28/2023 05:08:51 PM

Test Summary: PASS

Endface Image End1

PASS
End Type: 1x1 1 Fibers
Test Limit: IEC 61300-3-35 ED.2 SM RL>=45dB
Limits Version: 7.8
Date / Time: 11/28/2023 05:08:51 PM
Operator: BEN HAMLITSCH
Versiv
S/N: 22413214
Software Version: V6.9 Build 2
Probe: FI-3000
S/N: 19090081
Software Version: v2.1.1

Defects



Raw Image

