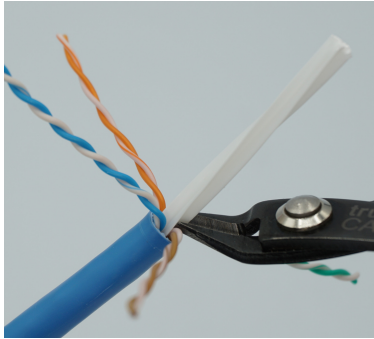
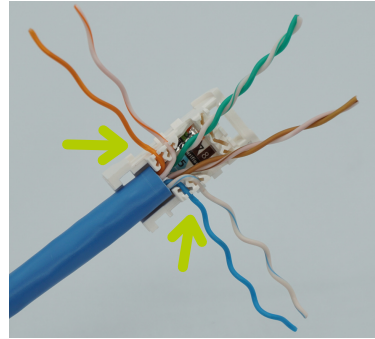




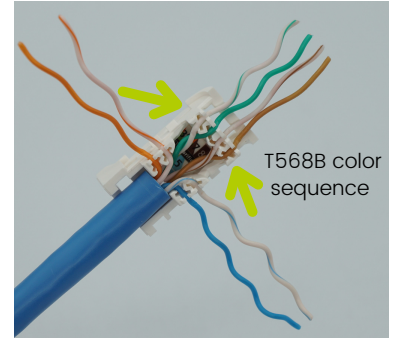
**1** Strip 2" of cable jacket from cable. Be careful not to nick conductors!



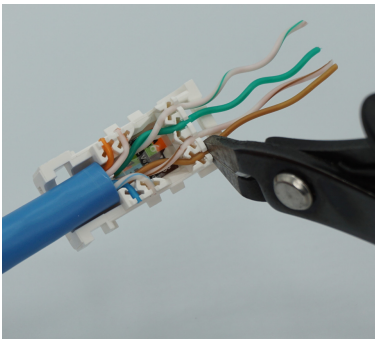
**2** Remove ripcord, any PE tape or waterproof tape, and then remove spline.



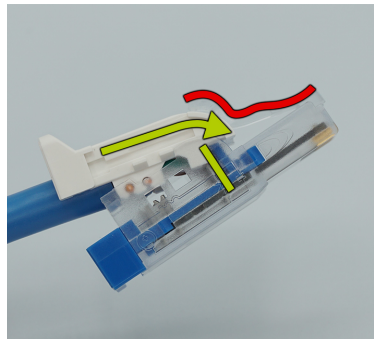
**3** Thread the rear pairs **FIRST**, using them to tighten and hold the cable jacket flush as indicated. T568B color sequence is shown.



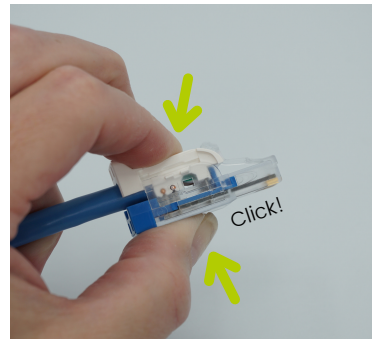
**4** Thread the front pairs. Ensure the cable jacket is still flush as indicated. T568B color sequence is shown.



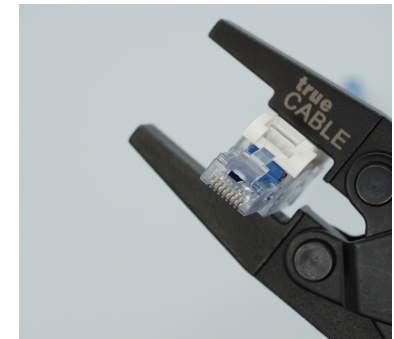
**5** Carefully flush cut conductors even with conductor holder cap as shown. Cut conductors vertically, one at a time. Do not accidentally cut off the white locking tabs!



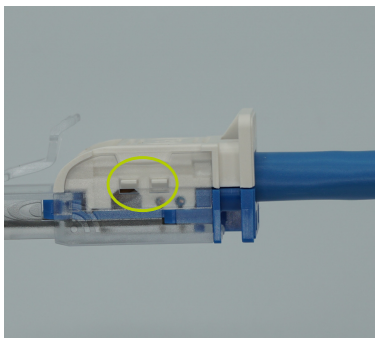
**6** Place conductor holder cap into plug housing, angled down and forward under the clear tab as shown. The blue post will align with the cut-out at the front of the cap.



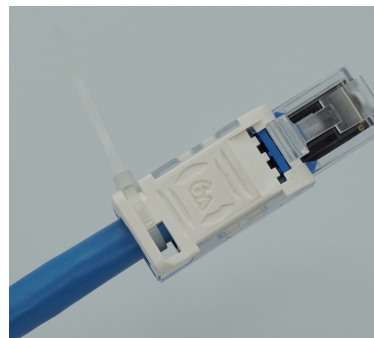
**7** Snap the field termination plug closed with finger pressure OR use parallel jaw pliers. Note: Thicker Ethernet cable conductors often rule out finger pressure alone.



**8** Parallel jaw pliers in use. Cat6A cable will often require pliers. Use inside steps on trueCABLE brand pliers, placing the plug as to apply even pressure on the plug housing.



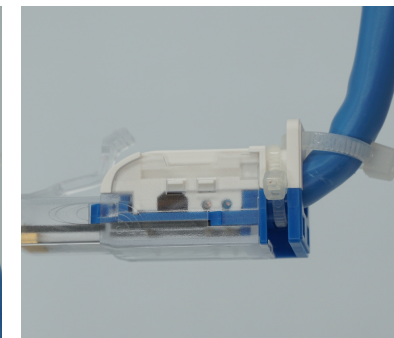
**9** A distinct click should be heard indicating the locking tabs (four total) have engaged. Check to be sure the tabs are locked as shown (two each side).



**10** Thread nylon tie through plug housing and around the cable as shown. Tighten and trim. This provides primary strain relief, and is Position #1.



**11** For Position #2, use the optional nylon tie as shown. This provides a downward cable angle.



**12** For Position #3, use the optional nylon tie as shown. This provides an upward cable angle.