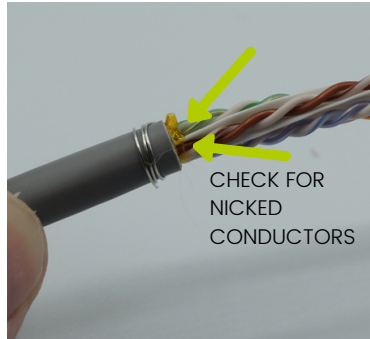


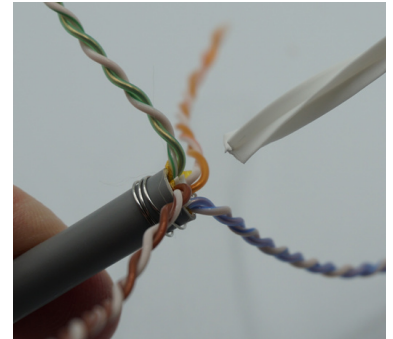
1 Cut the locking strain relief boot to fit the cable jacket. Slide boot down out of the way.



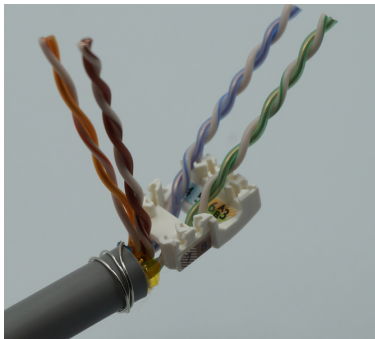
2 Strip off 3" or more of cable jacket. Strip off enough jacket for excess ESD drain wire to wrap around cable jacket.



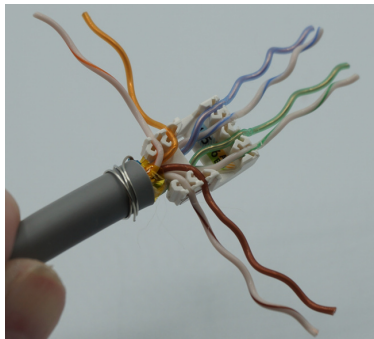
3 Remove shield & other wraps. Wrap ESD wire around cable jacket no further than 3/8" back.



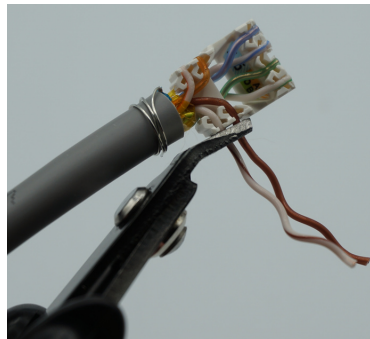
4 Remove spline



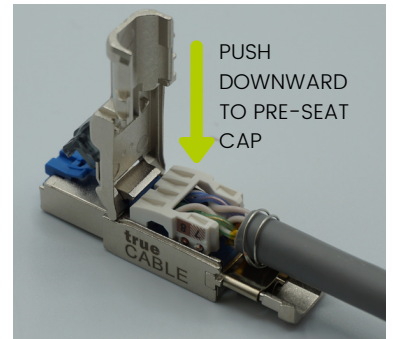
5 Slide wiring cap towards cable jacket. 2 conductor pairs go below bar and 2 above according to color code.



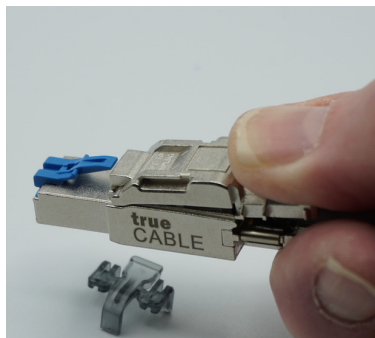
6 Untwist conductors and seat according to either T568A/B sequence. Keep untwist to 1/2" or less. T568B shown.



7 Flush cut off conductors even with the cap housing.



8 Insert cap into housing. It fits one way, aligning on the white notch. Press cap down to pre-seat before closing lid!



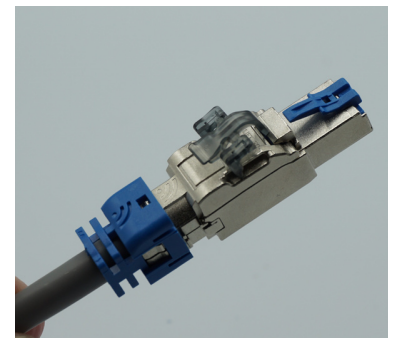
9 Remove sliding latch lock. Begin pressing downward on hinged housing.



10 Close with parallel pliers or channel locks. Close hinged lid by placing pressure at middle of housing.



11 Slide locking strain relief boot over rear of housing to lock closed. Match the WiFi symbols up.



12 Replace sliding latch lock key if desired