

Cat6 Direct Burial Unshielded

23AWG • 4 Twisted Pairs • CMX
U/UTP • 550MHz • Solid Copper



Lengths Available

- 500ft
- 1000ft

Jacket Colors



Key Features

- Bandwidth tested up to 550 MHz
- Suitable for 1 Gigabit and 5 Gigabit Ethernet up to 328 ft
- In compliance with ANSI/TIA 568.2-D
- CMX jacket can withstand sunlight, dirt, snow, and moisture
- Supports Power over Ethernet: PoE/PoE+/PoE++ (IEEE 802.3af/at/bt) 4PPoE up to 100W
- cETLus Certified, RoHS-3 Compliant

Technical Data

Insulation	PE
Average Thickness (mm)	0.225
Min Point Thickness (mm)	0.207
Conductor Insulation Dia. (±0.02mm)	1.02
Twisted Pair Dia. (±0.02mm)	2.04
Ripcord	Nylon
Spline	PE
Polyethylene Tape	Present
Shielding	U/UTP
Water Resistance	Jacket & Dry Tape

Conductor	Solid Bare Copper
Size	23AWG
Conductor Dia. (±0.05mm)	0.57

Standards Reference

UL-444 /
cETLus

ANSI/TIA
568-2.D

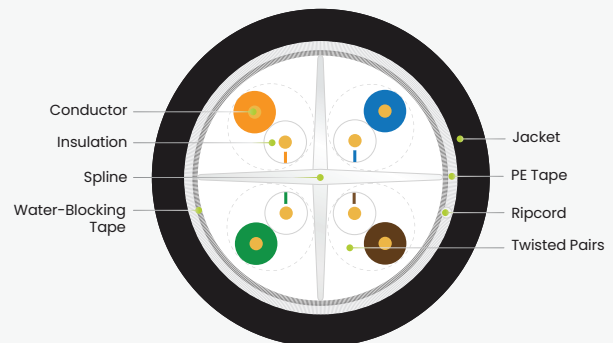
ISO/IEC
11801

Color of Pairs

Pair 1	Blue- White/Blue
Pair 2	Orange- White/Orange
Pair 3	Green- White/Green
Pair 4	Brown- White/Brown

Cable Jacket

	LLDPE
Average Thickness (mm)	0.60
Min. Point Thickness (mm)	0.55
Outer Diameter (±0.2mm)	7.10



Print Legend

trueCABLE CAT6 CMX U/UTP DIRECT BURIAL UV 75°C 4PR 23AWG c(ETL)us VERIFIED to ANSI/TIA 568-2.D 550MHz ROHS-3 XXXXT MM/YY

Cat6 Direct Burial Unshielded

23AWG • 4 Twisted Pairs • CMX
U/UTP • 550MHz • Solid Copper



Lengths Available

- 500ft
- 1000ft

Jacket Colors



Electrical Characteristics

PoE Certification	PoE/PoE+/PoE++ 4PPoE
Maximum PoE Wattage	100W
PoE Application Compatibility	802.3af/at/bt Type 4
TIA 568-2.D Cat6 Permanent Link +PoE	CERTIFIED
Maximum Application Speed @ 295ft	5GBASE-T
Nominal Velocity of Propagation (NVP)	69.0
Maximum Operating Voltage	300V
1.0 - 550MHz Impedance (Ω)	100 \pm 15
Maximum Operating Frequency	550MHz
1.0 - 550MHz Delay Skew (ns/100m)	\leq 45
Pair-to-Ground Capacitance Unbalance (pF/km)	\leq 3300
Max. Conductor DC Resistance 20°C (Ω /km)	68



Mechanical & Environmental Operating Parameters

Test Object	Jacket	Aging Condition ($^{\circ}\text{C} \times \text{hrs}$)	100 x 168
Test Material	LLDPE	After Tensile Strength (Mpa)	\geq 85% of unaged
Before- Tensile Strength (Mpa)	\geq 13.8	Aging Condition - Elongation (%)	\geq 50% of unaged
Aging- Elongation (%)	\geq 100	Cold Bend ($-20 \pm 2^{\circ}\text{C} \times 4\text{hrs}$)	No Crack
Min. Bend Radius	3.5cm/1.5in	Operating & Storage Temp.	-40°C to 75°C -40°F to 167°F
Max. Installation Tension	110N/25lb-ft	Installation Temp.	-20°C to 75°C -4°F to 167°F

Tested Compatible Accessories

Product

Part Number

Cat6 Punch Down Keystone Jack Unshielded	6EPD90CMPT
Cat6 Toolless Keystone Jack Unshielded	6ETL90CMPT
Cat6/6A Pass Through RJ45 Connectors Unshielded	MDPTRJ45
Cat6/6A Standard RJ45 Connectors Unshielded	LGRJ45
Medium Slip-On RJ45 Strain Relief Boot 7.50mm	MDSLIP
Cat6A Field Term Plug Unshielded	6AFT



Cable ID: 6ECMXBLK 05/21 U/UTP KSJ>KSJ

Test Limit: TIA Cat 6 Perm. Link (+PoE)

Limits Version: V7.6

Date / Time: 09/10/2021 10:20:56 AM

Operator: DON S

Headroom 5.0 dB (NEXT 1,2-3,6)

Cable Type: Cat 6 U/UTP

NVP: 69.3%

Main: Versiv

S/N: 1924100

Software Version: V6.6 Build 2

Calibration Date: 11/14/2020

Adapter: DSX-8000 (DSX-PLA804)

S/N: 4523168

Test Summary: PASS

Remote: Versiv

S/N: 1917273

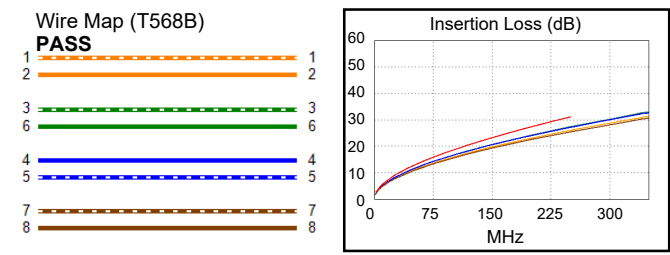
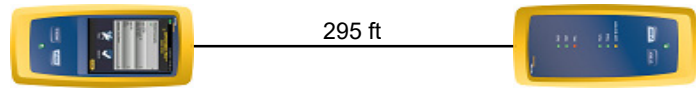
Software Version: V6.6 Build 2

Calibration Date: 11/14/2020

Adapter: DSX-8000R (DSX-PLA804)

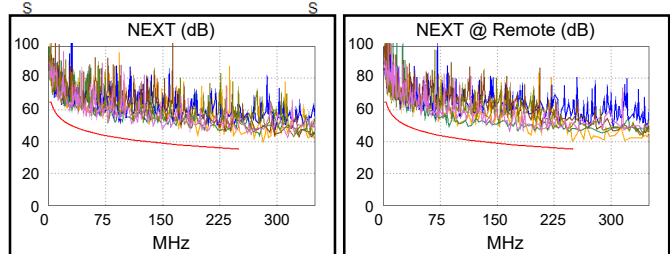
S/N: 4523169

Length (ft), Limit 295	[Pair 7,8]	295
Prop. Delay (ns), Limit 498	[Pair 4,5]	447
Delay Skew (ns), Limit 44	[Pair 4,5]	15
Resistance (ohms), Limit 21.00	[Pair 3,6]	13.05
Resist. Unbal. (ohms), Limit 0.380	[Pair 7,8]	0.038
Resist. P2P Unbal. (ohms), Limit 0.450	[Pair 1,2-3,6]	0.067
Insertion Loss Margin (dB)	[Pair 3,6]	3.6
Frequency (MHz)	[Pair 3,6]	250.0
Limit (dB)	[Pair 3,6]	31.1

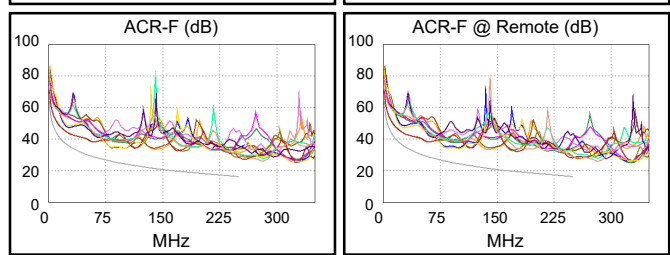


Worst Case Margin Worst Case Value

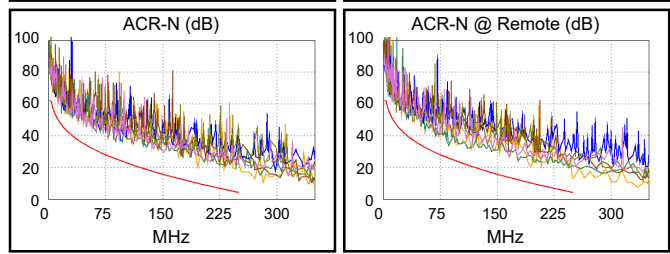
PASS	MAIN	SR	MAIN	SR
Worst Pair	1,2-3,6	1,2-3,6	1,2-3,6	1,2-3,6
NEXT (dB)	7.0	5.0	7.9	5.0
Freq. (MHz)	196.0	249.5	243.5	249.5
Limit (dB)	37.1	35.4	35.5	35.4
Worst Pair	7,8	1,2	1,2	1,2
PS NEXT (dB)	8.4	6.5	9.5	6.5
Freq. (MHz)	17.0	249.5	244.0	249.5
Limit (dB)	51.8	32.7	32.9	32.7



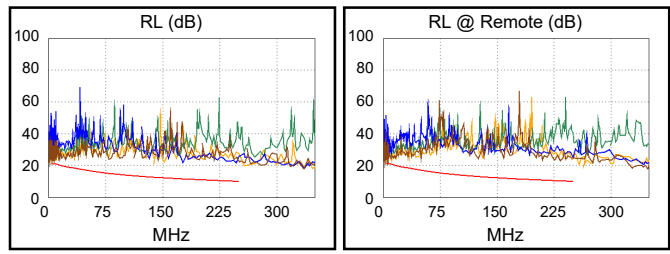
PASS	MAIN	SR	MAIN	SR
Worst Pair	3,6-4,5	4,5-3,6	3,6-4,5	4,5-3,6
ACR-F (dB)	6.9	6.9	12.2	11.8
Freq. (MHz)	2.4	2.4	250.0	250.0
Limit (dB)	56.7	56.7	16.2	16.2
Worst Pair	4,5	4,5	4,5	4,5
PS ACR-F (dB)	8.4	8.5	12.8	12.5
Freq. (MHz)	1.6	1.0	250.0	250.0
Limit (dB)	57.0	61.2	13.2	13.2



N/A	MAIN	SR	MAIN	SR
Worst Pair	1,2-3,6	1,2-4,5	1,2-3,6	1,2-3,6
ACR-N (dB)	9.6	7.6	11.6	8.7
Freq. (MHz)	24.0	85.8	243.5	249.5
Limit (dB)	43.1	25.9	4.9	4.3
Worst Pair	7,8	4,5	3,6	3,6
PS ACR-N (dB)	9.5	10.1	13.8	10.8
Freq. (MHz)	17.0	85.8	243.5	249.5
Limit (dB)	44.5	23.3	2.3	1.7



PASS	MAIN	SR	MAIN	SR
Worst Pair	7,8	1,2	4,5	7,8
RL (dB)	2.4	2.4	11.4	11.6
Freq. (MHz)	3.9	10.8	247.0	210.0
Limit (dB)	21.0	20.8	10.1	10.8



Compliant Network Standards:
 10BASE-T 100BASE-TX 100BASE-T4
 1000BASE-T 2.5GBASE-T 5GBASE-T
 ATM-25 ATM-155 ATM-155
 100VG-AnyLan TR-4 TR-16 Active
 TR-16 Passive