

Cat6A 90° Toolless Shielded Keystone Jack

Component Level Rated •
500MHz • 4PPoE • Suitable for
Shielded Ethernet Cable



Key Features

- Component Level Rated and Impedance Matching for Superior Cat6A Performance
- Press Fit Technology for Maximum Reliability
- UL, cETLus, CE, TAA, FCC, ETL Verified to IEC 60512-99-001, and RoHS-2 Compliant
- ANSI/TIA 568 2.D Certified with trueCABLE Cat6A F/UTP Ethernet Cable
- Supports PoE++ (802.3bt) 4PPoE, up to 100W

Fitment

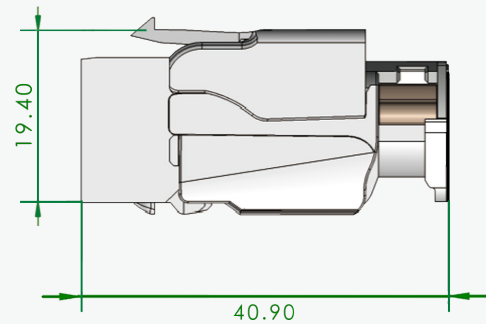
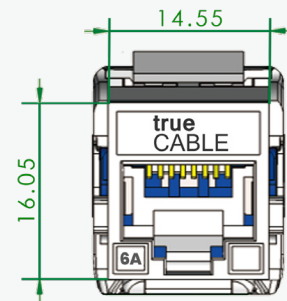
Conductor Type	Solid & Stranded Copper
Suitable Conductor Gauge	23 - 26 AWG
Conductor Insulation Diameter	0.86 - 1.47mm
Cable Jacket Diameter	5.00 - 9.90mm

Electrical

Contact Resistance	<20mΩ
Insulation Resistance	>500MΩ
Current Rating	1.5A @ 20°C
Dielectric Strength	>1000VDC

Tested Compatible Tools

Product	Part Number
Parallel Crimping Pliers	trueCLOSE
Conductive Copper Fabric Strips	CUStrips_100pc



Unit = mm

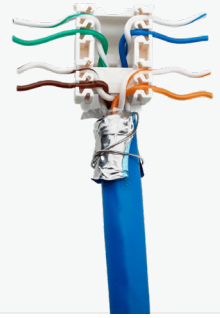
Construction & Mechanical

Jack Type	90° Hinged Toolless Style
Jack Housing Material	Nickel Plated Zinc Alloy
Fire Safety	UL 94V-0
Conductor Holder Material	Polycarbonate
IDC Terminals	Phosphor Bronze with 100μ Nickel Plating

Re-termination Durability Rating	20 Termination Cycles
RJ45 Insertion Durability Rating	750 Connection Cycles
Operating Temperature	14°F to 140°F -10°C to 60°C
RJ45 Spring Wire	Phosphor Bronze with 60μ Nickel Undercoat and 50μ Gold Plating

Application

Standards Compliance	TIA Category 6A and ISO/IEC 11801 Class EA Certified
Maximum Application Speed	10GBASE-T up to 295ft
PoE Compatibility	PoE/PoE+/PoE++ (IEEE 802.3af/at/bt) 4PPoE up to 100W
Maximum PoE DC Wattage	100W
Installation Environment	For shielded (F/UTP, S/FTP, F/FTP) cable only
Wiring Schema	T568A or T568B with color coding diagram on conductor holder cap



Cable ID: 6ASCMX JACK > FT PLUG

Test Limit: TIA Cat 6A MPTL (+PoE)

Limits Version: V7.6

Date / Time: 07/11/2022 03:10:21 PM

Operator: DON S

Headroom 2.9 dB (NEXT 3,6-7,8)

Cable Type: Cat 6A F/UTP

NVP: 66.7%

Main: Versiv

S/N: 1924100

Software Version: V6.7 Build 1

Calibration Date: 11/14/2020

Adapter: DSX-8000 (DSX-PLA804)

S/N: 4523169

Test Summary: PASS

Remote: Versiv

S/N: 1917273

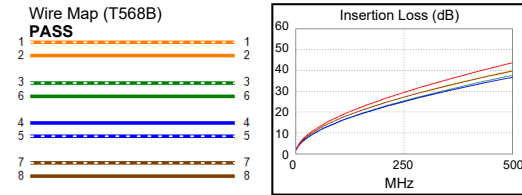
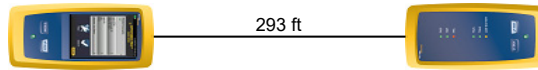
Software Version: V6.7 Build 1

Calibration Date: 11/14/2020

Adapter: DSX-8000R (DSX-PC6A)

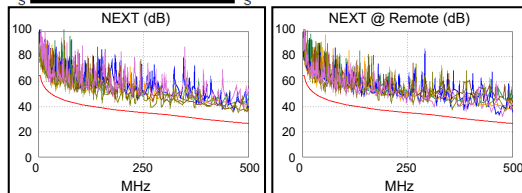
S/N: 4716155

Length (ft), Limit 295	[Pair 4,5]	293
Prop. Delay (ns), Limit 498	[Pair 1,2]	484
Delay Skew (ns), Limit 44	[Pair 1,2]	37
Resistance (ohms), Limit 21.00	[Pair 7,8]	13.19
Resist. Unbal. (ohms)	[Pair 3,6]	0.116
Resist. P2P Unbal. (ohms)	[Pair 4,5-7,8]	0.216
Insertion Loss Margin (dB)	[Pair 1,2]	3.8
Frequency (MHz)	[Pair 1,2]	500.0
Limit (dB)	[Pair 1,2]	43.8

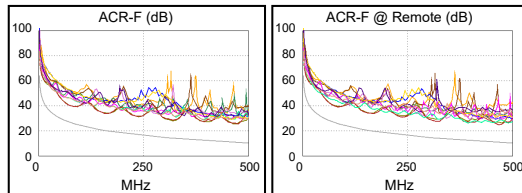


Worst Case Margin Worst Case Value

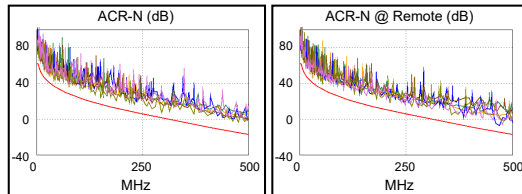
	MAIN	SR	MAIN	SR
PASS				
Worst Pair	3,6-7,8	1,2-7,8	3,6-7,8	1,2-7,8
NEXT (dB)	2.9	3.6	8.0	3.7
Freq. (MHz)	295.0	469.0	476.0	470.0
Limit (dB)	34.2	27.6	27.4	27.5
Worst Pair	3,6	7,8	3,6	7,8
PS NEXT (dB)	5.0	5.5	8.5	5.5
Freq. (MHz)	295.0	470.0	476.0	470.0
Limit (dB)	31.5	24.7	24.5	24.7



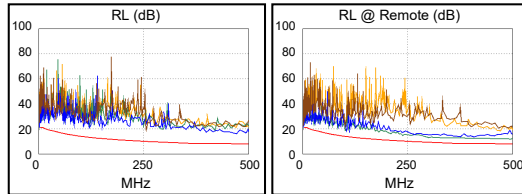
	MAIN	SR	MAIN	SR
PASS				
Worst Pair	3,6-4,5	4,5-3,6	4,5-3,6	4,5-3,6
ACR-F (dB)	13.4	13.2	14.8	14.1
Freq. (MHz)	79.8	79.8	476.0	471.0
Limit (dB)	26.2	26.2	10.6	10.7
Worst Pair	4,5	7,8	4,5	7,8
PS ACR-F (dB)	15.1	14.5	16.2	15.8
Freq. (MHz)	84.5	395.0	463.0	454.0
Limit (dB)	22.7	9.3	7.9	8.0



	MAIN	SR	MAIN	SR
N/A				
Worst Pair	3,6-7,8	3,6-7,8	3,6-7,8	1,2-7,8
ACR-N (dB)	5.6	6.5	11.9	7.5
Freq. (MHz)	295.0	53.3	476.0	470.0
Limit (dB)	1.8	33.3	-15.2	-14.7
Worst Pair	7,8	7,8	7,8	7,8
PS ACR-N (dB)	8.1	8.5	14.9	9.3
Freq. (MHz)	295.0	53.3	490.0	470.0
Limit (dB)	-0.9	30.9	-19.2	-17.5



	MAIN	SR	MAIN	SR
PASS				
Worst Pair	4,5	3,6	4,5	3,6
RL (dB)	6.1	2.6	6.8	2.6
Freq. (MHz)	24.0	427.0	466.0	427.0
Limit (dB)	19.1	8.0	8.0	8.0



Compliant Network Standards:

10BASE-T	100BASE-TX	100BASE-T4
100BASE-T	2.5GBASE-T	5GBASE-T
10GBASE-T	ATM-25	ATM-51
ATM-155	100VG-AnyLan	TR-4
TR-16 Active	TR-16 Passive	