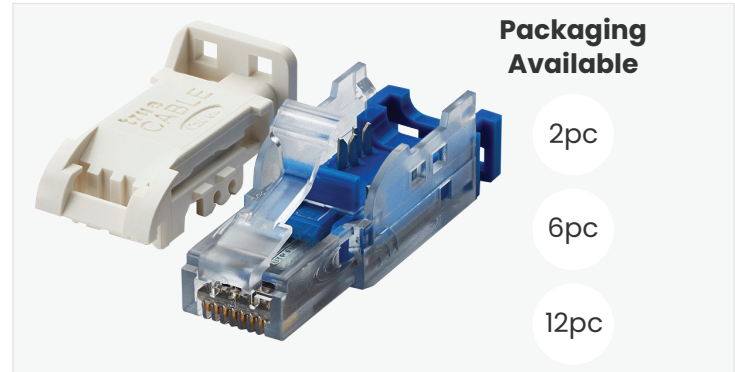


# Cat6A Field Term Plug 3-Way Unshielded

Component Level Connector • 600MHz • 4PPoE • Suitable for Unshielded Ethernet Cable

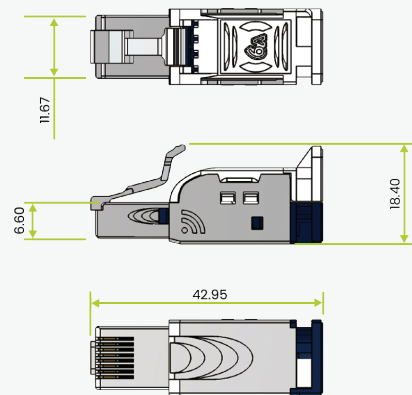


## Key Features

- Cat6A MPTL and Cat6A Patch Cord component level rated
- Tested up to 600MHz
- ANSI/TIA 568 2.D Certified by trueCABLE. CE Listed. TUV RoHS-2 Certified, US TAA compliant, ISO/IEC Certified.
- 100% compatible with any RJ45 8P8C female Ethernet port
- Supports PoE++ (802.3bt) 4PPoE, up to 100W

## Physical Compatibility & Dimensions

Cable Jacket Diameter (mm)	6.00 - 8.50
Conductor Insulation Diameter (±0.02mm)	0.86 - 1.20
Conductor Type	Solid & Stranded Copper
Suitable Conductor	23 - 26 AWG
Overall Plug Length with Strain Relief (mm)	42.95
Overall Plug Height (mm)	18.40



(Unit = mm)

## Electrical Characteristics

Contact Resistance	<20mΩ
DC Resistance	<200mΩ
Resistance Unbalance	<50mΩ
Insulation Resistance	>500mΩ
Dielectric Strength	>1000V DC
Max. Current Rating	1.5A @ 20°C

## Tested Compatible Tools

Product	Part Number
<u>Parallel Crimping Pliers</u>	trueCLOSE
<u>Flush Cutter</u>	FLUSHCUT5

## Construction, Mechanical & Environmental Characteristics

Housing Material	PC UL94V-0	PCB Material	FR-4
Conductor Organizer Cap	PC UL94V-0	Operating Temperature	-10° C to 60° C
IDC Housing	PC UL94V-0	RJ45 Plug Durability Rating	750 Connects/Disconnects
IDC Re-Termination Durability Rating	20 Terminations	RJ45 Contact Plating	50µ Gold with Nickel Undercoat
IDC Terminals	Phosphor bronze 0.5t, plated with Ni/Sn 60µ	Fire Safety	UL Listed
		EU Directive 2002/95/EC	RoHS Compliant

# Transmission Performance Characteristics

Maximum Application Speed @ 295ft	10GBASE-T	Maximum PoE DC Wattage	100W
PoE Application Compatibility	802.3af/at/bt	Certified & Tested to:	TIA 568-2.D Cat6A MPTL
PoE Certification	PoE/PoE+/PoE++ 4PPoE		ISO/IEC 11801 Cat6A Patch Cord TIA 568-2.D Cat6A Patch Cord



## Cable ID: trueCABLE 6ACMR UTP KSJ > UTP Field Term Plug

Test Limit: TIA Cat 6A MPTL (+PoE)

Limits Version: V7.5

Date / Time: 07/26/2021 10:11:18 AM

Operator: DON S

Headroom 7.7 dB (NEXT 3,6-4,5)

Cable Type: Cat 6A U/UTP

NVP: 68.2%

Main: Versiv

S/N: 1924100

Software Version: V6.5 Build 5

Calibration Date: 11/14/2020

Adapter: DSX-8000 (DSX-PLA804)

S/N: 4523168

## Test Summary: PASS

Remote: Versiv

S/N: 1917273

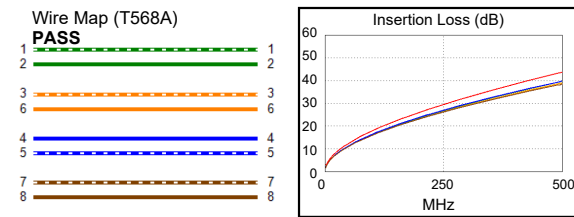
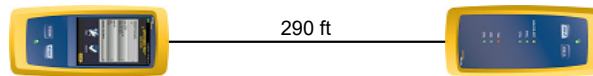
Software Version: V6.5 Build 5

Calibration Date: 11/14/2020

Adapter: DSX-8000R (DSX-PC6A)

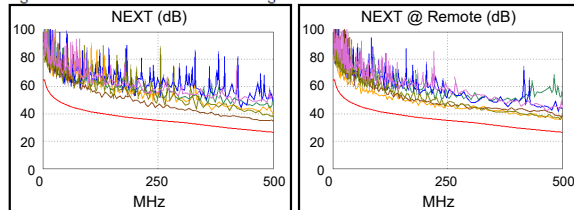
S/N: 4716155

Length (ft), Limit 295	[Pair 7,8]	290
Prop. Delay (ns), Limit 498	[Pair 4,5]	461
Delay Skew (ns), Limit 44	[Pair 4,5]	29
Resistance (ohms)	[Pair 4,5]	13.19
Resist. Unbal. (ohms)	[Pair 1,2]	0.109
Resist. P2P Unbal. (ohms)	[Pair 4,5-7,8]	0.150
Insertion Loss Margin (dB)	[Pair 3,6]	4.0
Frequency (MHz)	[Pair 3,6]	500.0
Limit (dB)	[Pair 3,6]	43.8

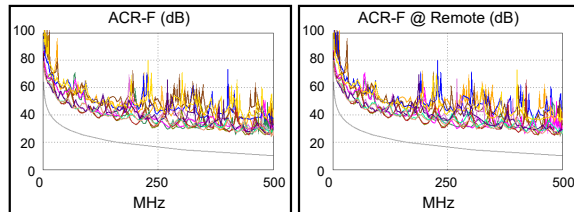


Worst Case Margin Worst Case Value

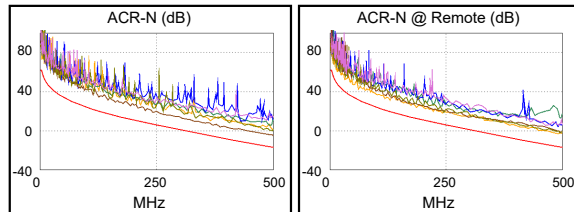
PASS	MAIN	SR	MAIN	SR
Worst Pair	3,6-4,5	1,2-3,6	3,6-4,5	3,6-7,8
<b>NEXT (dB)</b>	7.7	8.3	7.8	9.1
Freq. (MHz)	471.0	334.0	500.0	495.0
Limit (dB)	27.5	32.5	26.7	26.8
Worst Pair	3,6	3,6	3,6	3,6
<b>PS NEXT (dB)</b>	8.8	7.7	8.9	8.3
Freq. (MHz)	386.0	309.0	500.0	495.0
Limit (dB)	27.6	31.0	23.8	23.9



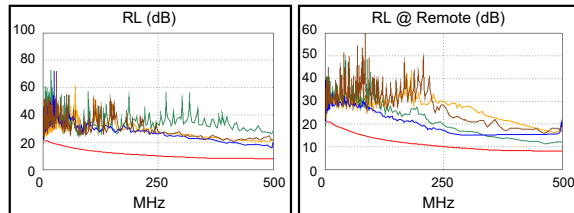
PASS	MAIN	SR	MAIN	SR
Worst Pair	1,2-4,5	4,5-1,2	3,6-4,5	4,5-3,6
<b>ACR-F (dB)</b>	13.2	13.9	14.0	14.1
Freq. (MHz)	271.0	271.0	488.0	488.0
Limit (dB)	15.5	15.5	10.4	10.4
Worst Pair	4,5	4,5	4,5	4,5
<b>PS ACR-F (dB)</b>	13.4	14.2	13.4	14.7
Freq. (MHz)	452.0	447.0	452.0	490.0
Limit (dB)	8.1	8.2	8.1	7.4



N/A	MAIN	SR	MAIN	SR
Worst Pair	3,6-4,5	1,2-3,6	3,6-4,5	1,2-3,6
<b>ACR-N (dB)</b>	11.0	11.0	11.9	13.3
Freq. (MHz)	386.0	222.0	500.0	491.0
Limit (dB)	-7.3	8.6	-17.1	-16.4
Worst Pair	3,6	3,6	3,6	3,6
<b>PS ACR-N (dB)</b>	12.2	10.7	12.9	12.4
Freq. (MHz)	386.0	246.0	500.0	496.0
Limit (dB)	-10.0	3.6	-20.0	-19.7



PASS	MAIN	SR	MAIN	SR
Worst Pair	1,2	3,6	4,5	3,6
<b>RL (dB)</b>	6.2	3.3	7.9	3.3
Freq. (MHz)	3.9	463.0	496.0	463.0
Limit (dB)	21.0	8.0	8.0	8.0



Compliant Network Standards:

10BASE-T	100BASE-TX	100BASE-T4
100BASE-T	2.5GBASE-T	5GBASE-T
10GBASE-T	ATM-25	ATM-51
ATM-155	100VG-AnyLan	TR-4
TR-16 Active	TR-16 Passive	