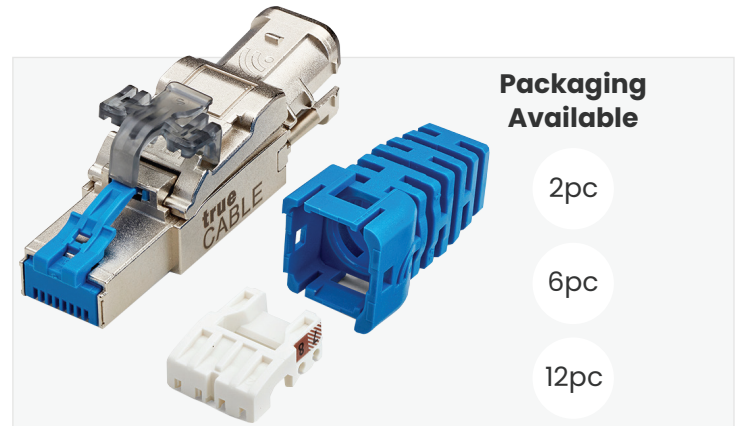


# Cat6A Field Term Plug Shielded

Component Level Connector •  
600MHz • 4PPoE • Suitable for  
Shielded & Unshielded Ethernet Cable



Packaging Available

2pc

6pc

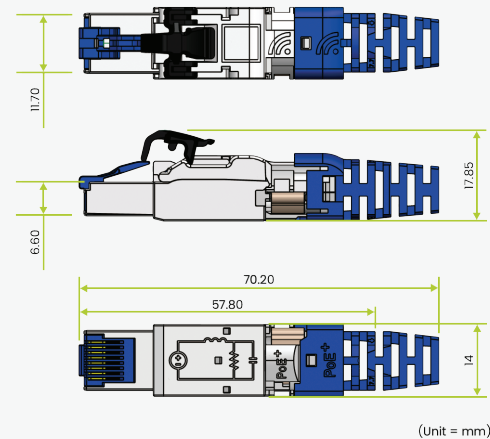
12pc

## Key Features

- Cat6A MPTL and Cat6A Patch Cord component level rated
- Tested up to 600MHz
- ANSI/TIA 568 2.D Certified by trueCABLE. CE Listed. TUV RoHS-2 Certified, US TAA compliant, ISO/IEC Certified.
- 100% compatible with any RJ45 8P8C female Ethernet port
- Supports PoE++ (802.3bt) 4PPoE, up to 90W

## Physical Compatibility & Dimensions

Cable Jacket Diameter (mm)	5.80 - 7.80
Conductor Insulation Diameter (±0.02mm)	0.86 - 1.47
Conductor Type	Solid & Stranded Copper
Suitable Conductor	23 - 26 AWG
Overall Plug Length with Strain Relief (mm)	57.80 - 70.20
Overall Plug Height (mm)	17.85



(Unit = mm)

## Electrical Characteristics

Contact Resistance	<20mΩ
DC Resistance	<200mΩ
Resistance Unbalance	<50mΩ
Insulation Resistance	>500mΩ
Shield Resistance	<100mΩ
Dielectric Strength	>1000V DC
Max. Current Rating	1.5A @ 20°C

## Tested Compatible Tools

Product	Part Number
<u>Parallel Crimping Pliers</u>	trueCLOSE
<u>Flush Cutter</u>	FLUSHCUT5

## Construction, Mechanical & Environmental Characteristics

Housing/Top & Rear Cover Material	Nickel Plated Zinc Alloy	IDC Re-Termination Durability Rating	20 Terminations
Conductor Organizer Cap	ABS UL94V-0	PCB Material	FR-4
IDC Housing	PC UL94V-0	Operating Temperature	-10° C to 60° C
Strain Relief & Removable Latch	PC UL94V-0	RJ45 Plug Durability Rating	750 Connects/Disconnects
IDC Terminals	Phosphor bronze 0.5t, plated with Ni/Sn 60μ	RJ45 Contact Plating	50μ Gold with Nickel Undercoat
		Fire Safety	UL Listed
		EU Directive 2002/95/EC	RoHS Compliant

# Transmission Performance Characteristics

Maximum Application Speed @ 295ft	10GBASE-T	Maximum PoE DC Wattage	90W
PoE Application Compatibility	802.3af/at/bt	Certified & Tested to:	TIA 568-2.D Cat6A MPLT
PoE Certification	PoE/PoE+/PoE++ 4PPoE		ISO/IEC 11801 Cat6A Patch Cord TIA 568-2.D Cat6A Patch Cord



## Cable ID: 6ASCMRYEL TLESS KSJ TO FT PLUG 09/20

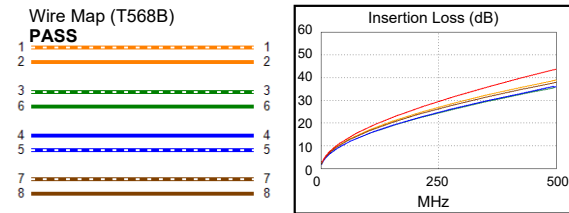
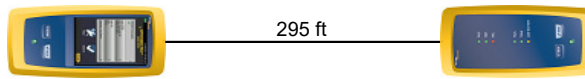
## Test Summary: PASS

Test Limit: TIA Cat 6A MPLT (+PoE)  
Limits Version: V7.5  
Date / Time: 09/18/2020 09:03:15 AM  
Operator: DON S  
Headroom 3.0 dB (NEXT 3,6-4,5)  
Cable Type: Cat 6A F/UTP  
NVP: 68.2%

Main: Versiv  
S/N: 1917273  
Software Version: V6.5 Build 5  
Calibration Date: 11/08/2019  
Adapter: DSX-8000 (DSX-PLA804)  
S/N: 4523168

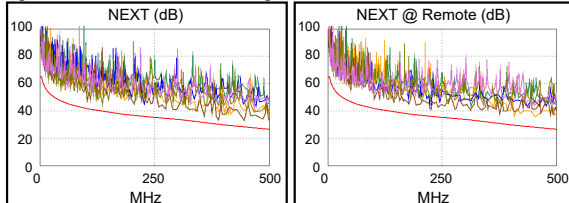
Remote: Versiv  
S/N: 1924100  
Software Version: V6.5 Build 5  
Calibration Date: 11/08/2019  
Adapter: DSX-8000R (DSX-PC6A)  
S/N: 4711299

Length (ft), Limit 295	[Pair 4,5]	295
Prop. Delay (ns), Limit 498	[Pair 1,2]	480
Delay Skew (ns), Limit 44	[Pair 1,2]	40
Resistance (ohms)	[Pair 1,2]	13.03
Resist. Unbal. (ohms)	[Pair 7,8]	0.517
Resist. P2P Unbal. (ohms)	[Pair 1,2-4,5]	0.244
Insertion Loss Margin (dB)	[Pair 1,2]	4.8
Frequency (MHz)	[Pair 1,2]	500.0
Limit (dB)	[Pair 1,2]	43.8

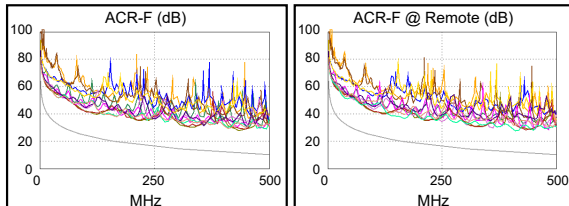


Worst Case Margin Worst Case Value

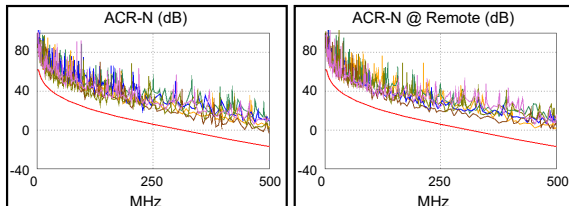
	MAIN	SR	MAIN	SR
<b>PASS</b>				
Worst Pair	3,6-4,5	3,6-4,5	3,6-4,5	1,2-3,6
<b>NEXT (dB)</b>	3.0	5.4	6.1	6.6
Freq. (MHz)	389.0	223.5	500.0	452.0
Limit (dB)	30.3	36.1	26.7	28.1
Worst Pair	3,6	3,6	3,6	3,6
<b>PS NEXT (dB)</b>	4.6	6.5	7.6	8.6
Freq. (MHz)	389.0	143.5	500.0	452.0
Limit (dB)	27.5	36.7	23.8	25.3



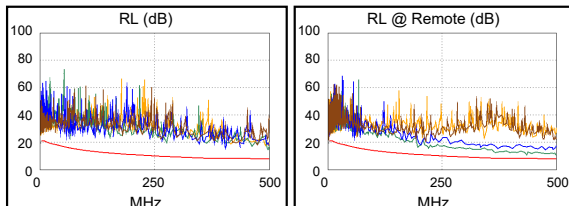
	MAIN	SR	MAIN	SR
<b>PASS</b>				
Worst Pair	3,6-4,5	4,5-7,8	3,6-4,5	4,5-7,8
<b>ACR-F (dB)</b>	16.2	15.7	16.2	15.7
Freq. (MHz)	434.0	414.0	434.0	414.0
Limit (dB)	11.4	11.8	11.4	11.8
Worst Pair	4,5	4,5	4,5	7,8
<b>PS ACR-F (dB)</b>	16.9	17.0	17.6	17.4
Freq. (MHz)	1.3	1.5	449.0	452.0
Limit (dB)	59.3	57.7	8.1	8.1



	MAIN	SR	MAIN	SR
<b>N/A</b>				
Worst Pair	3,6-7,8	3,6-4,5	3,6-4,5	1,2-3,6
<b>ACR-N (dB)</b>	7.3	8.2	13.8	14.2
Freq. (MHz)	136.5	102.0	500.0	452.0
Limit (dB)	18.4	23.5	-17.1	-13.2
Worst Pair	3,6	3,6	3,6	1,2
<b>PS ACR-N (dB)</b>	8.6	10.0	15.5	13.5
Freq. (MHz)	104.0	143.5	500.0	452.0
Limit (dB)	20.7	14.9	-20.0	-16.0



	MAIN	SR	MAIN	SR
<b>PASS</b>				
Worst Pair	3,6	3,6	3,6	3,6
<b>RL (dB)</b>	6.7	2.8	6.7	2.8
Freq. (MHz)	497.0	499.0	497.0	499.0
Limit (dB)	8.0	8.0	8.0	8.0



Compliant Network Standards:  
 10BASE-T      100BASE-TX      100BASE-T4  
 1000BASE-T      2.5GBASE-T      5GBASE-T  
 10GBASE-T      ATM-25      ATM-51  
 ATM-155      100VG-AnyLan      TR-4  
 TR-16 Active      TR-16 Passive