

Cat5e Plenum Unshielded

24AWG • 4 Twisted Pairs • CMP
U/UTP • 350MHz • Solid Copper



Lengths Available

- 1000ft

Jacket Colors



Key Features

- Bandwidth tested up to 350 MHz
- Suitable for 1 Gigabit and 2.5 Gigabit Ethernet up to 328 ft
- In compliance with ANSI/TIA 568.2-D
- RoHS-3 Compliant
- Easily identified color striped pairs
- Supports Power over Ethernet: PoE/PoE+/PoE++ (IEEE 802.3af/at/bt) 4PPoE up to 100W
- Sequential footage markings every 2ft

Technical Data

| Insulation | FEP |
|--|-------------|
| Average Thickness (mm) | 0.205 |
| Min Point Thickness (mm) | 0.198 |
| Conductor Insulation Dia. (±0.02mm) | 0.89 |
| Twisted Pair Dia. (±0.02mm) | 1.82 |
| Ripcord | Kevlar |
| Spline | Not Present |
| Polyethylene Tape | Not Present |
| Shielding | U/UTP |

| Conductor | Solid Bare Copper |
|--------------------------|-------------------|
| Size | 24AWG |
| Conductor Dia. (±0.05mm) | 0.50 |

| Color of Pairs | |
|----------------|----------------------|
| Pair 1 | Blue- White/Blue |
| Pair 2 | Orange- White/Orange |
| Pair 3 | Green- White/Green |
| Pair 4 | Brown- White/Brown |

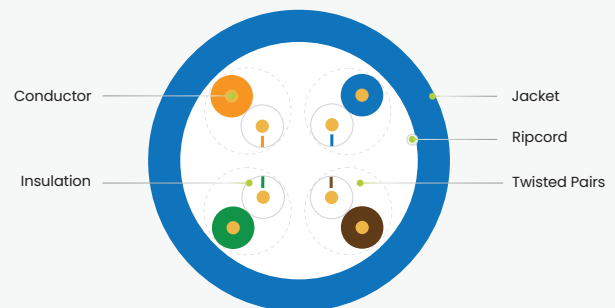
| Cable Jacket | FR-PVC |
|--------------------------------|-------------|
| Average Thickness (mm) | 0.45 |
| Min. Point Thickness (mm) | 0.40 |
| Outer Diameter (±0.2mm) | 4.90 |

Standards Reference

UL-444 /
cETLus

ANSI/TIA
568-2.D

ISO/IEC
11801



Print Legend

trueCABLE Cat5e CMP U/UTP 75°C 4PR 24AWG c(ETL)us VERIFIED to ANSI/TIA 568.2-D Category 5e 350MHz RoHS-3 XXXXFT MM/YY

Cat5e Plenum Unshielded

24AWG • 4 Twisted Pairs • CMP
U/UTP • 350MHz • Solid Copper



Lengths Available

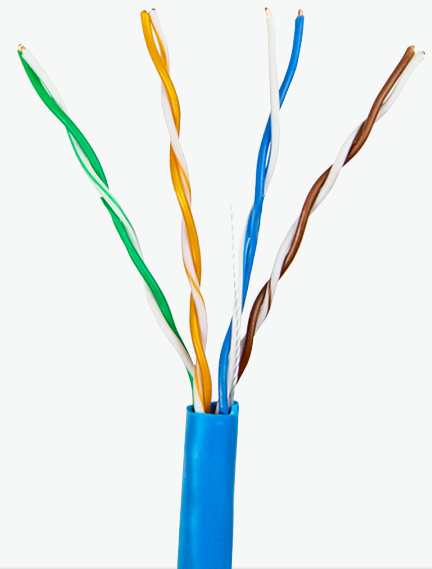
• 1000ft

Jacket Colors



Electrical Characteristics

| | |
|---|----------------------|
| PoE Certification | PoE/PoE+/PoE++ 4PPoE |
| Maximum PoE Wattage | 100W |
| PoE Application Compatibility | 802.3af/at/bt Type 4 |
| TIA 568-2.D Cat5e Permanent Link +PoE | CERTIFIED |
| Maximum Application Speed @ 295ft | 2.5GBASE-T |
| Nominal Velocity of Propagation (NVP) | 72.2 |
| Maximum Operating Voltage | 300V |
| 1.0 - 350MHz Impedance (Ω) | 100 \pm 15 |
| Maximum Operating Frequency | 350MHz |
| 1.0 - 350MHz Delay Skew (ns/100m) | \leq 45 |
| Pair-to-Ground Capacitance Unbalance (pF/km) | \leq 3300 |
| Max. Conductor DC Resistance 20°C (Ω /km) | 93.8 |



Mechanical & Environmental Operating Parameters

| | | | |
|--------------------------------|--------------|----------------------------------|--------------------------------|
| Test Object | Jacket | Aging Condition (°C x hrs) | 100 x 168 |
| Test Material | FR-PVC | After Tensile Strength (Mpa) | \geq 85% of unaged |
| Before- Tensile Strength (Mpa) | \geq 13.8 | Aging Condition - Elongation (%) | \geq 50% of unaged |
| Aging- Elongation (%) | \geq 100 | Cold Bend (-20 \pm 2°C x 4hrs) | No Crack |
| Min. Bend Radius | 2.0cm/0.75in | Operating & Storage Temp. | -40°C to 75°C -40°F to 167°F |
| Max. Installation Tension | 110N/25lb-ft | Installation Temp. | -20°C to 75°C -4°F to 167°F |

Tested Compatible Accessories

Product

Part Number

| | |
|---|------------|
| Cat5e Punch Down Keystone Jack Unshielded | 5EPD90CMPT |
| Cat5e Toolless Keystone Jack Unshielded | 5ETL90CMPT |
| Cat5e Pass Through RJ45 Connectors Unshielded | 5MPTRJ45 |
| Cat5e Standard RJ45 Connectors Unshielded | 5MRJ45 |
| Small Cut-to-Fit RJ45 Strain Relief Boot 5.5 - 7.00mm | 5SMCTF |



Cable ID: 5ECMP 10/21 UTP JACK > JACK

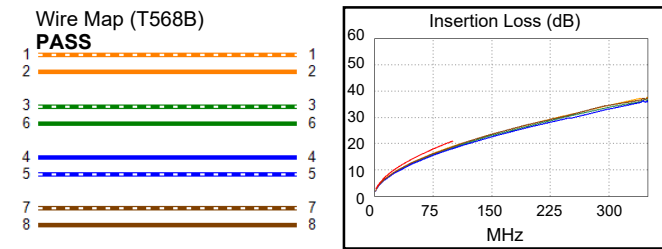
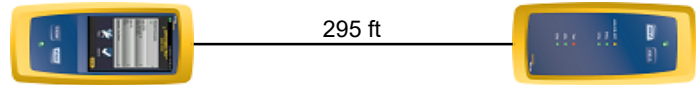
Test Limit: TIA Cat 5e Perm. Link (+PoE)
Limits Version: V7.6
Date / Time: 04/11/2022 11:10:48 AM
Operator: DON S
Headroom 8.5 dB (NEXT 3,6-4,5)
Cable Type: Cat 5e U/UTP
NVP: 72.2%

Main: Versiv
S/N: 1924100
Software Version: V6.7 Build 1
Calibration Date: 11/14/2020
Adapter: DSX-8000 (DSX-PLA804)
S/N: 4523169

Test Summary: PASS

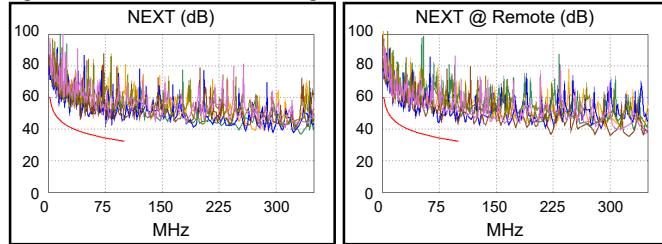
Remote: Versiv
S/N: 1917273
Software Version: V6.7 Build 1
Calibration Date: 11/14/2020
Adapter: DSX-8000R (DSX-PLA804)
S/N: 4523168

| | | |
|--|----------------|-------|
| Length (ft), Limit 295 | [Pair 4,5] | 295 |
| Prop. Delay (ns), Limit 498 | [Pair 1,2] | 425 |
| Delay Skew (ns), Limit 44 | [Pair 1,2] | 9 |
| Resistance (ohms), Limit 21.00 | [Pair 1,2] | 16.38 |
| Resist. Unbal. (ohms), Limit 0.480 | [Pair 4,5] | 0.086 |
| Resist. P2P Unbal. (ohms), Limit 0.570 | [Pair 1,2-4,5] | 0.094 |
| Insertion Loss Margin (dB) | [Pair 1,2] | 2.0 |
| Frequency (MHz) | [Pair 1,2] | 100.0 |
| Limit (dB) | [Pair 1,2] | 21.0 |

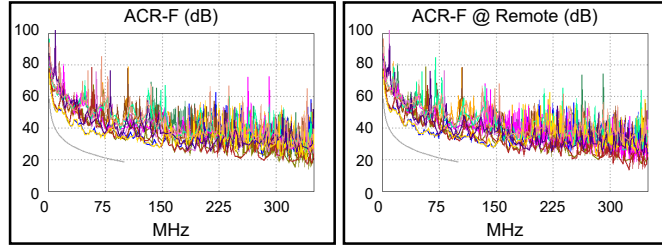


Worst Case Margin Worst Case Value

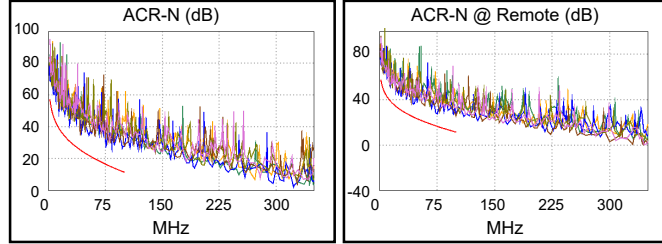
| PASS | MAIN | SR | MAIN | SR |
|---------------------|---------|---------|---------|---------|
| Worst Pair | 3,6-4,5 | 1,2-7,8 | 1,2-7,8 | 1,2-7,8 |
| NEXT (dB) | 8.5 | 8.9 | 9.7 | 8.9 |
| Freq. (MHz) | 42.0 | 75.0 | 75.8 | 75.0 |
| Limit (dB) | 38.5 | 34.4 | 34.3 | 34.4 |
| Worst Pair | 3,6 | 1,2 | 1,2 | 4,5 |
| PS NEXT (dB) | 10.9 | 11.6 | 12.0 | 13.4 |
| Freq. (MHz) | 42.0 | 75.0 | 75.8 | 99.3 |
| Limit (dB) | 35.5 | 31.4 | 31.3 | 29.4 |



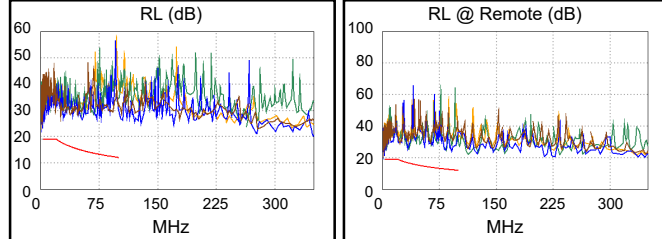
| PASS | MAIN | SR | MAIN | SR |
|----------------------|---------|---------|---------|---------|
| Worst Pair | 7,8-1,2 | 1,2-7,8 | 3,6-4,5 | 4,5-3,6 |
| ACR-F (dB) | 10.4 | 10.4 | 13.7 | 13.3 |
| Freq. (MHz) | 48.8 | 48.8 | 100.0 | 100.0 |
| Limit (dB) | 24.9 | 24.9 | 18.6 | 18.6 |
| Worst Pair | 1,2 | 7,8 | 7,8 | 3,6 |
| PS ACR-F (dB) | 13.0 | 13.0 | 14.8 | 14.7 |
| Freq. (MHz) | 48.8 | 48.8 | 94.3 | 99.8 |
| Limit (dB) | 21.9 | 21.9 | 16.1 | 15.6 |



| N/A | MAIN | SR | MAIN | SR |
|----------------------|---------|---------|---------|---------|
| Worst Pair | 1,2-7,8 | 1,2-7,8 | 1,2-7,8 | 3,6-4,5 |
| ACR-N (dB) | 9.9 | 10.8 | 14.7 | 14.2 |
| Freq. (MHz) | 27.9 | 75.0 | 97.3 | 99.5 |
| Limit (dB) | 30.8 | 16.4 | 11.8 | 11.4 |
| Worst Pair | 7,8 | 1,2 | 1,2 | 4,5 |
| PS ACR-N (dB) | 12.1 | 12.9 | 17.2 | 16.4 |
| Freq. (MHz) | 27.6 | 43.8 | 97.3 | 99.5 |
| Limit (dB) | 27.9 | 21.8 | 8.8 | 8.4 |



| PASS | MAIN | SR | MAIN | SR |
|----------------|------|------|------|------|
| Worst Pair | 4,5 | 4,5 | 4,5 | 4,5 |
| RL (dB) | 8.1 | 6.9 | 11.7 | 11.5 |
| Freq. (MHz) | 4.0 | 4.0 | 53.5 | 91.8 |
| Limit (dB) | 19.0 | 19.0 | 14.7 | 12.4 |



Compliant Network Standards:
 10BASE-T 100BASE-TX 100BASE-T4
 1000BASE-T 2.5GBASE-T ATM-25
 ATM-51 ATM-155 100VG-AnyLan
 TR-4 TR-16 Active TR-16 Passive