

CHAMPION

R-SERIES

Air Compressors & Units

R-10 PARTS LIST MANUAL



COMPRESSED
AIR ADVISORS

Inc.

Compressed Air Advisors, Inc.

Phone: 877.247.2381

info@compressedairadvisors.com

www.compressedairadvisors.com



REFER TO THE R-SERIES OPERATION & SERVICE MANUAL FOR IMPORTANT SAFETY INFORMATION. READ, UNDERSTAND AND RETAIN ALL INSTRUCTIONS BEFORE OPERATING OR SERVICING THIS EQUIPMENT TO PREVENT INJURY OR EQUIPMENT DAMAGE.

**MAINTAIN COMPRESSOR RELIABILITY AND PERFORMANCE WITH
GENUINE CHAMPION® COMPRESSOR
PARTS AND SUPPORT SERVICES**

Champion® Compressor genuine parts, manufactured to design tolerances, are developed for optimum dependability . specifically for Champion compressor systems. Design and material innovations are the result of years of experience with hundreds of different compressor applications. Reliability in materials and quality assurance are incorporated in our genuine replacement parts.

Your authorized Champion Compressor distributor offers all the backup you need. A worldwide network of authorized distributors provides the finest product support in the air compressor industry.

Your authorized distributor can support your Champion air compressor with these services:

1. Trained parts specialists to assist you in selecting the correct replacement parts.
2. A full line of factory tested CHAMPLUBi® compressor lubricants specifically formulated for use in Champion compressors.
3. Repair and maintenance kits designed with the necessary parts to simplify servicing your compressor.

Authorized distributor service technicians are factory trained and skilled in compressor maintenance and repair. They are ready to respond and assist you by providing fast, expert maintenance and repair services.



When ordering parts, specify Compressor MODEL, HORSEPOWER and SERIAL NUMBER (see nameplate on unit). All orders for Parts should be placed with the nearest authorized distributor.

Order by part number and description. Reference numbers are for your convenience only.

Table of Contents

Section 1 – General	5
Dimensions.....	5
Specifications	5
Performance.....	5
Section 2 – Compressor	6
Crankcase Group	6
Crankshaft Group	7
Centrifugal Unloader Group.....	8
Piston/Rod Group – Low Pressure.....	10
Piston/Rod Group – High Pressure.....	12
Cylinder Group – Standard.....	14
Cylinder Group – with Head Unloaders (optional).....	16
Tubing and Control Group – Standard.....	18
Tubing and Control Group – with Head Unloaders (optional).....	20
High Temperature Switch (optional)	22
Low Oil Shutdown Control (optional)	23
Section 3 – Electric Packages	24
Vertical Package	24
Horizontal Package - Simplex.....	26
Electric Motor List	28
Tank Drain – Manual.....	29
Tank Drain – Electric (optional).....	30
Control Group – Start/Stop.....	31
Control Group – Dual Control (optional)	32
Power Transmission.....	33

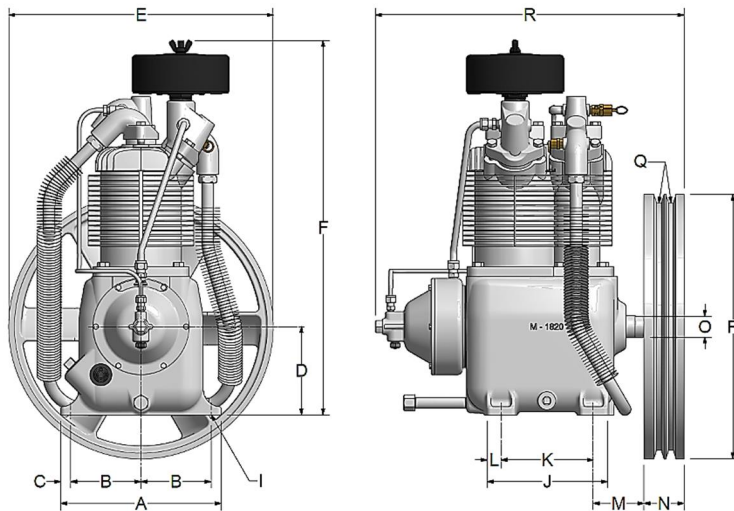
Table of Contents

Belt Guard – Standard	34
Belt Guard – with Aftercooler (optional)	35
Discharge Piping – Vertical, Standard.....	36
Discharge Piping – Vertical, with Aftercooler (optional)	38
Discharge Piping – Horizontal, Standard.....	40
Discharge Piping – Horizontal, with Aftercooler (optional)	42
Notes	44

COMPRESSED
AIR ADVISORS
Inc.

Section 1 – General

Dimensions



C416-C
Ref Drawing

Item	R10D
A	Base-Width 10"
B	Bolt Down-Width 4-3/8"
C	Bolt Down to Edge 5/8"
D	Base to Crank Ctr 5-1/2"
E	Overall Width 16-1/2"
F	Overall Height 23-1/4"
I	Bolt Down Hole Dia. 15/32"
J	Base-Depth 7-1/2"
K	Bolt Down Depth 5-3/4"
L	Bolt Down to Edge 7/8"
M	Bolt Hole to Wheel (Max.) 3-5/8"
N	Flywheel Width 2-1/2"
O	Crank Diameter 1-5/16"
P	Flywheel Diameter 16-1/2"
Q	Flywheel Grooves 2VB
R	Overall Depth 20"

- H.P. Exhaust Opening: 3/4" tubing
- Flywheel Rotation – Clockwise when viewed from front, flywheel to rear.

Specifications

BORE & STROKE (INCHES)	NO. OF CYLINDERS	OIL CAPACITY (QTS.)	WEIGHT (LBS)	PRESSURE (PSIG)	CU FT./REV.	MIN./MAX. RPM
4-5/8 & 2-1/2 x 2	2	2	107	175	.01942*	400/1050

*Clearance Volume Modified to Effective .014 Cu. Ft./Rev.

Performance

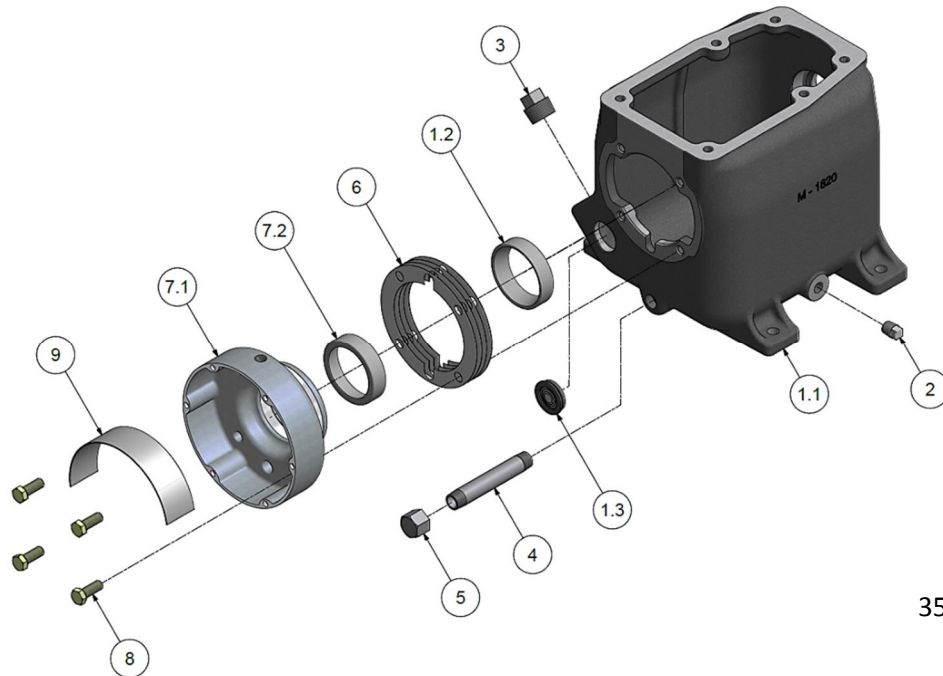
OUTPUT PRESS. PSIG	MOTOR H.P.	PUMP RPM	DISPL. CFM	COOLING AIR FLOW CFM	HEAT REJECTION BTU/HR	APPROX. PULLEY O.D. INCHES
125	2	513	10.0	617	4480	5.15
175	2	427	8.29	513	4480	4.35
125	3	790	15.3	949	6700	7.75
175	3	748	14.5	899	6700	7.35

All data is based on 1800 RPM electric motors as a power source.

Pulley Dia. (approx.) = $\frac{\text{Compressor RPM} \times \text{Flywheel Dia.}}{\text{Motor or Engine RPM}}$

Section 2 – Compressor

Crankcase Group



350CAP810-01
Ref Drawing

CRANKCASE GROUP

301CAP013

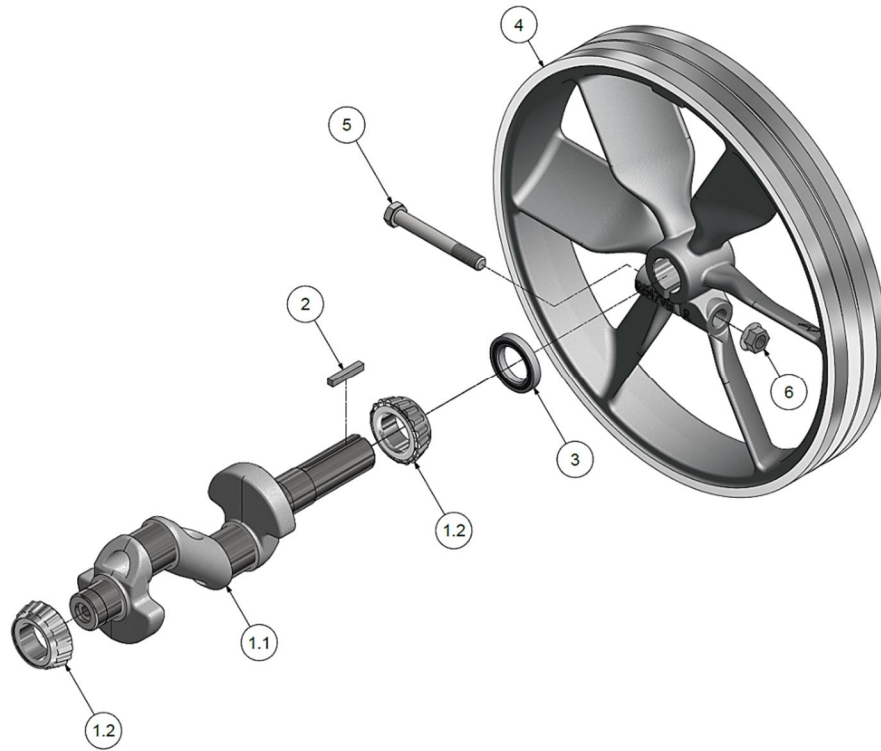
Part No.	Part No.	Description	Quantity
1.1	M1820	CRANKCASE	1
1.2	NR16*	MAIN BEARING, CUP	1
1.3	RE714	OIL LEVEL GAUGE	1
2	64AA5	PLUG	1
3	64A5	PLUG	1
4	63E12	NIPPLE	1
5	64AD3	CAP	1
6	SE1430*	GASKET, 0.032	1
6	SE1430A*	GASKET, 0.006	1
6	SE1430B*	GASKET, 0.010	1
6	SE1430C*	GASKET, 0.015	1
7.1	NR80A	GOVERNOR HOUSING	1
7.2	NR16*	MAIN BEARING, CUP	1
8	M2343	SCREW (torque @ 400 in-lbs)	4
9	NR104	PLATE,GOVERNOR BAFFLE	1

*not sold separately – see repair parts

REPAIR PARTS

Part No.	Part No.	Description	Quantity
1.2,7.2	ZNR16A	MAIN BEARING	2
6	Z130	GOVERNOR HOUSING GASKET SET	1
-	Z764	COMPRESSOR GASKET SET (excludes valve gaskets)	1

Crankshaft Group



351CAP810-01
Ref Drawing

CRANKSHAFT GROUP

300CAP004

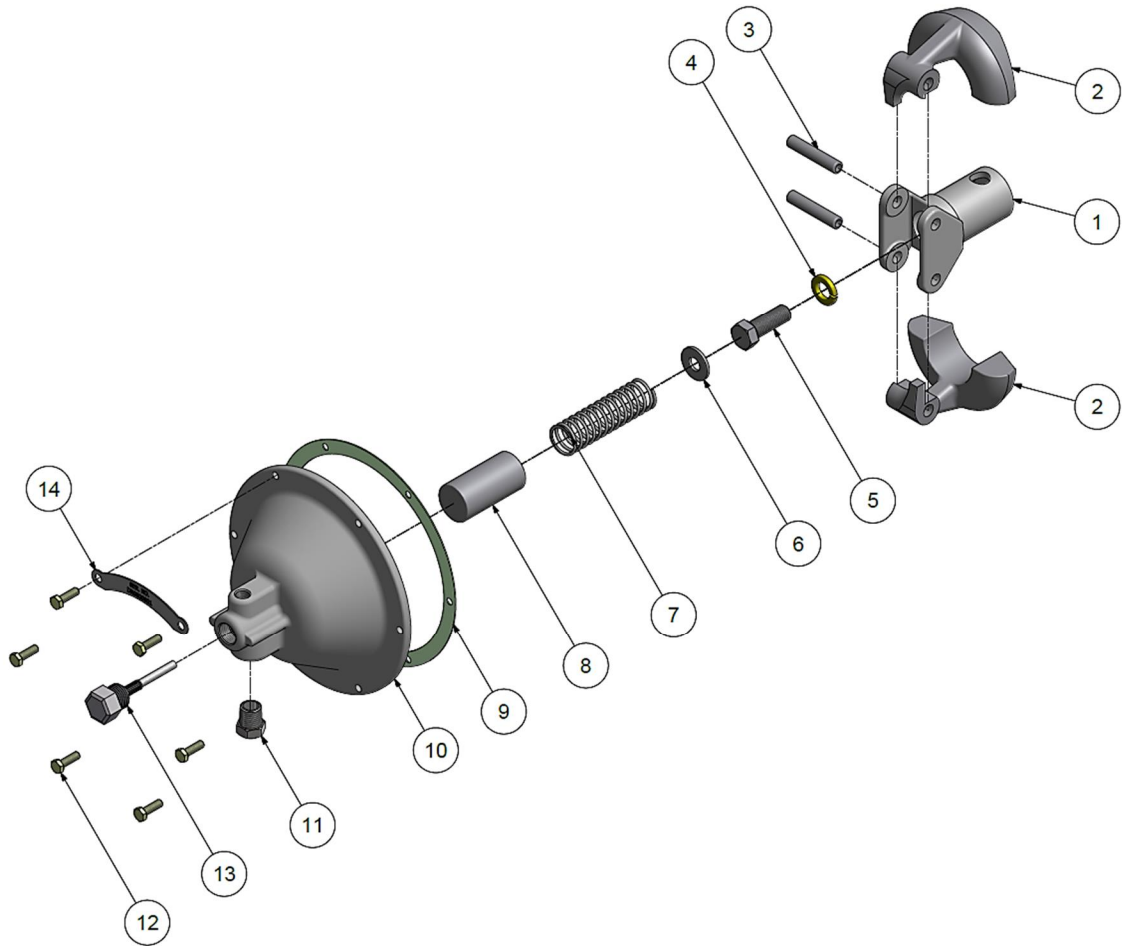
1.1	R105	CRANKSHAFT	1
1.2	NR16A*	MAIN BEARING, CONE & ROLLER	2
2	U8	KEY	1
3	OSN4	OIL SEAL	1
4	NR7A	FLYWHEEL	1
5	655EE160	SCREW (torque @ 600 in-lbs)	1
6	M2955	NUT	1

*not sold separately – see repair parts

REPAIR PARTS

1.2	ZNR16A	MAIN BEARING	2
-----	--------	--------------	---

Centrifugal Unloader Group



352CAP810-01
Ref Drawing

Centrifugal Unloader Group

CENTRIFUGAL UNLOADER GROUP

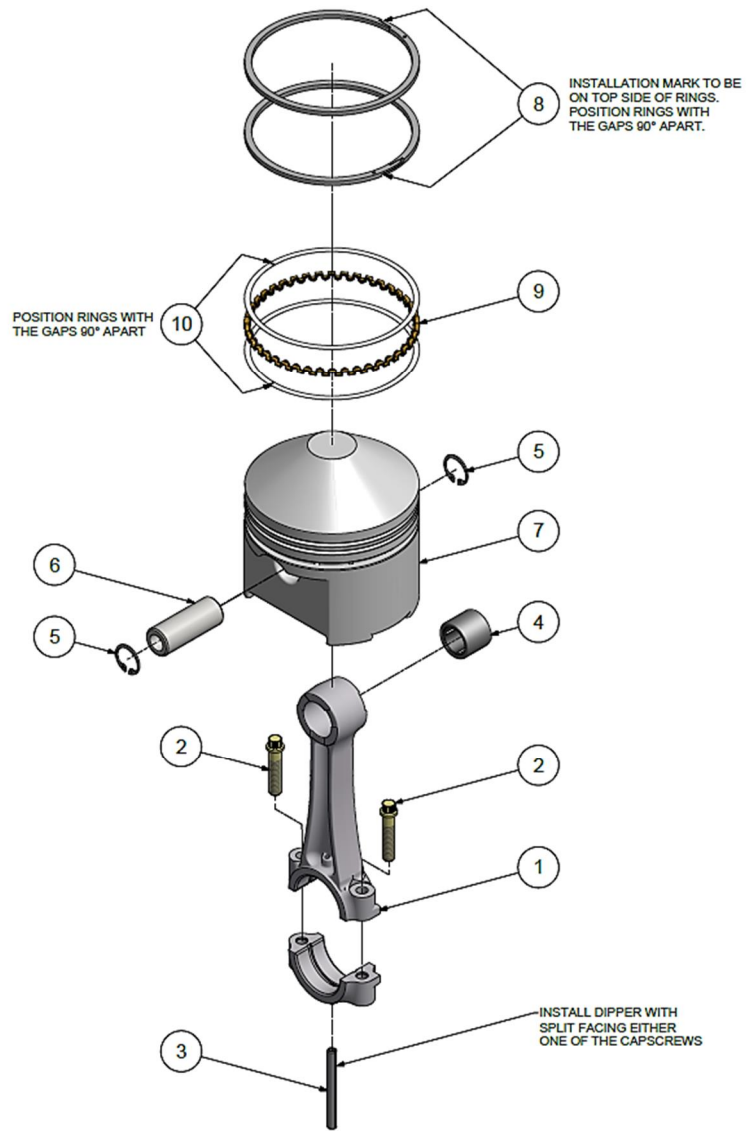
300CAP890

1	SE583B	SPINDLE,GOVERNOR	1
2	SE582B	WEIGHT,GOVERNOR	2
3	SE592A	PIN, GOVERNOR WEIGHT	2
4	95B4Z	WASHER-LOCK	1
5	M2345	SCREW (torque @ 470 in-lbs)	1
6	M912A	SPACER,CENTRIFUGAL UNLOADER	1
7	SE590	SPRING,GOVERNOR	1
8	SE587	SLEEVE, SPRING	1
9	SE1489	GASKET,GOVERNOR COVER	1
10	RE10100A	GOVERNOR HOUSING COVER	1
11	Z4593	BREATHER	1
12	M3473	SCREW	6
13	Z12414A	RELEASE VALVE KIT	1
14	M3658	SERIAL NUMBER PLATE	1

REPAIR PARTS

-	Z764	COMPRESSOR GASKET SET (excludes valve gaskets)	1
---	------	--	---

Piston/Rod Group – Low Pressure



355CAP810-00
Ref Drawing

Piston/Rod Group – Low Pressure

LOW PRESSURE ROD/PISTON GROUP

301CAP4056

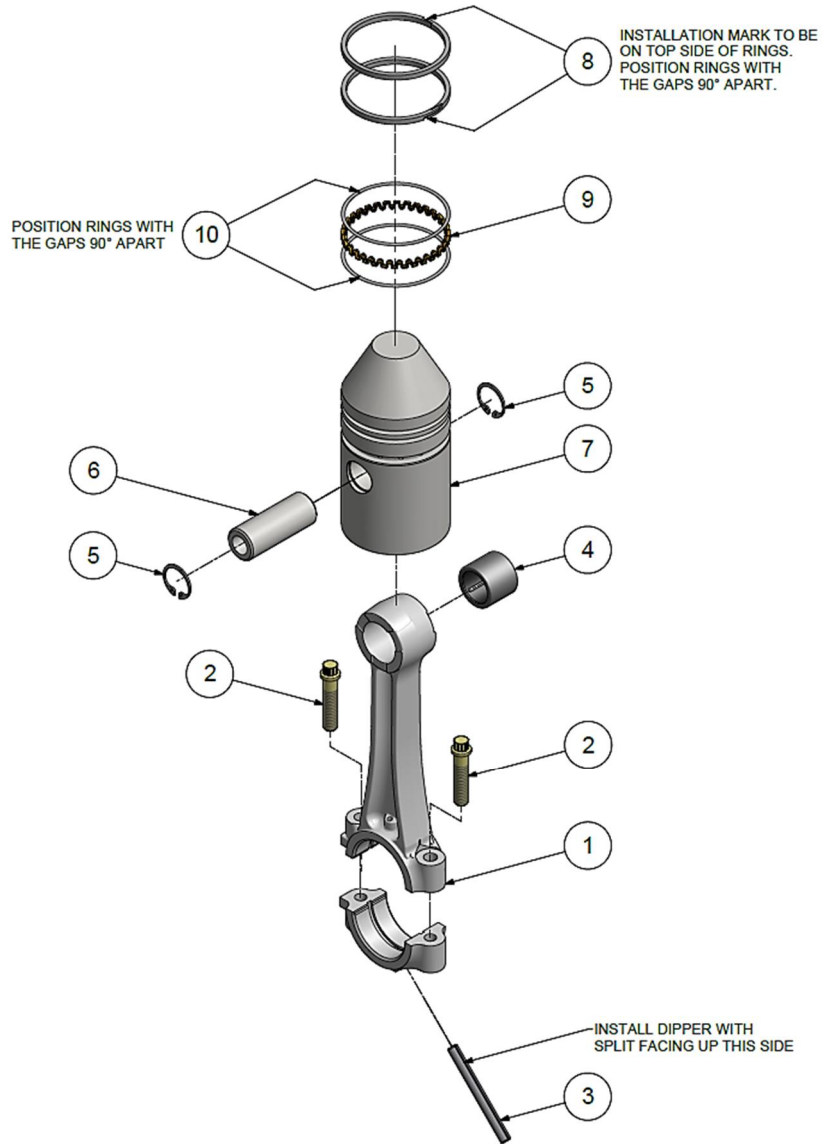
1	M1582*	CONNECTING ROD	1
2	M1583	SCREW (torque @ 230 in-lbs)	2
3	R1024	OIL DIPPER	1
4	R1037	BEARING, WRIST PIN	1
5	R10102	RING, RETAINING	2
6	R1021	PIN, PISTON	1
7	R154	PISTON	1
8	P02788A*	RING, PISTON	2
9	RE1410D1*	RING, EXPANDER	1
10	RE1410D2*	RING, RAIL	2

*not sold separately – see repair parts

REPAIR PARTS

1-4	Z750	CONNECTING ROD ASSEMBLY KIT	1
5-7	ZR154	PISTON KIT, LOW PRESSURE WITH PIN	1
8-10	Z798	RING SET, LOW PRESSURE	1
5-10	Z9101	PISTON & RING KIT, LOW PRESSURE	1
-	Z799	COMPLETE RING SET, HIGH & LOW PRESSURE	1

Piston/Rod Group – High Pressure



354CAP810-00
Ref Drawing

Piston/Rod Group – High Pressure

HIGH PRESSURE ROD/PISTON GROUP

300CAP4056

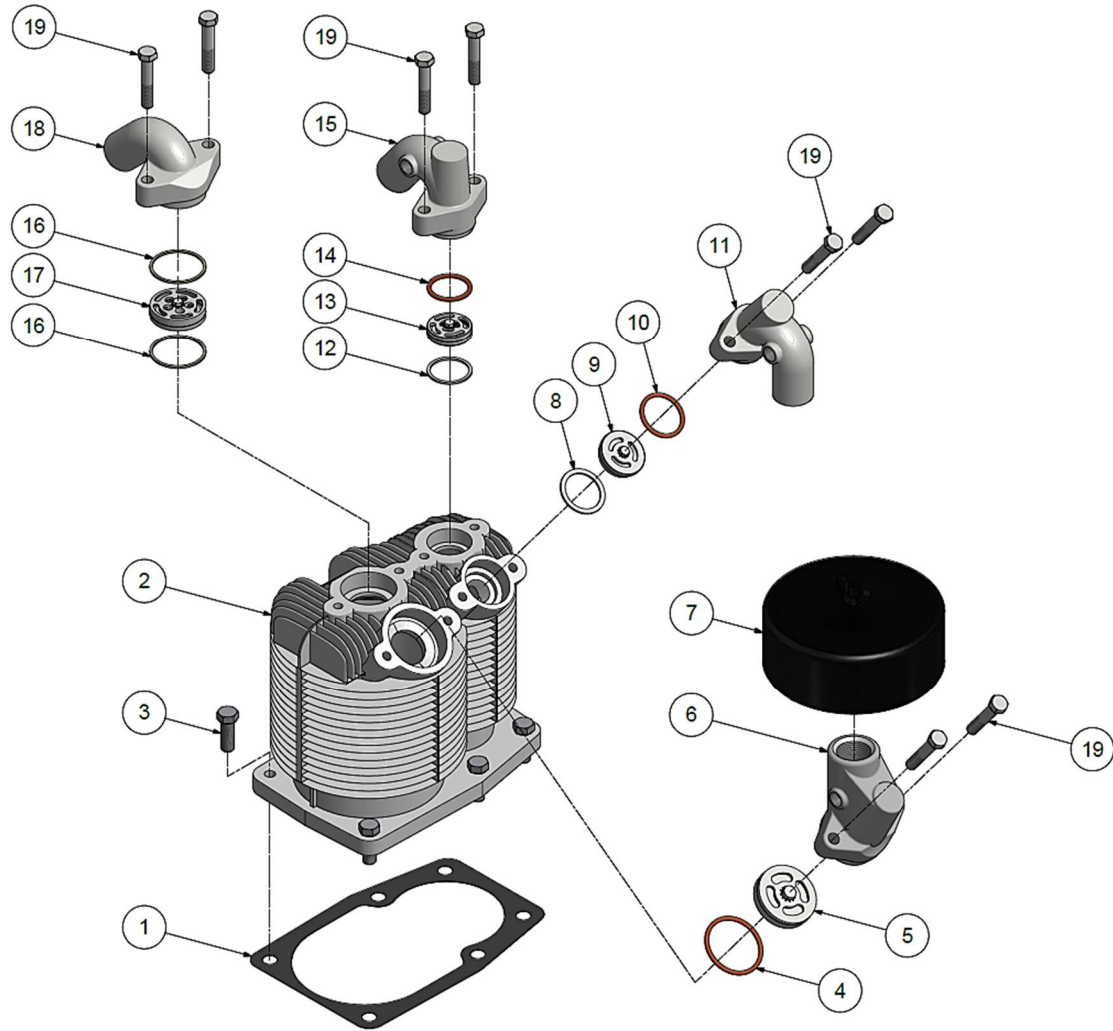
1	M1584*	CONNECTING ROD	1
2	M1583	SCREW (torque @ 230 in-lbs)	2
3	R1024	OIL DIPPER	1
4	R1037	BEARING, WRIST PIN	1
5	R10102	RING, RETAINING	2
6	R1021	PIN, PISTON	1
7	P02709C	PISTON	1
8	P02785A*	RING, PISTON	2
9	RE3610D1*	RING, EXPANDER	1
10	RE3610D2*	RING, RAIL	2

*not sold separately – see repair parts

REPAIR PARTS

1-4	Z752	CONNECTING ROD ASSEMBLY KIT	1
5-7	ZP2709C	PISTON KIT, HIGH PRESSURE WITH PIN	1
8-10	Z797	RING SET, HIGH PRESSURE	1
5-10	Z9100	PISTON & RING KIT, HIGH PRESSURE	1
-	Z799	COMPLETE RING SET, HIGH & LOW PRESSURE	1

Cylinder Group – Standard



353CAP810-00
Ref Drawing

Cylinder Group – Standard

CYLINDER GROUP

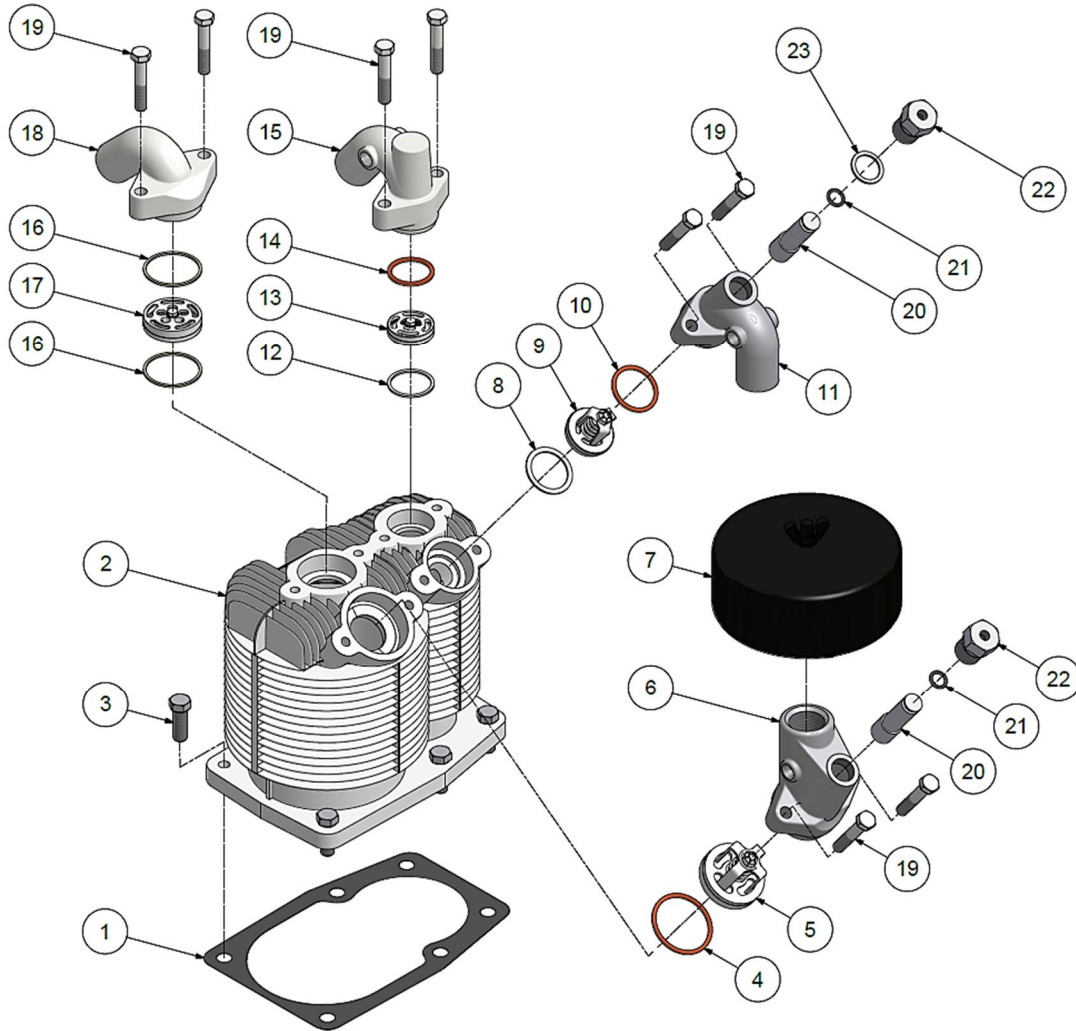
300CAP4042

1	NR29A	GASKET,CYLINDER FLANGE	1
2	P12237D	CYLINDER	1
3	M2345	SCREW (torque @ 400 in-lbs)	6
4	CQP14832A	GASKET,VALVE,LP,COPPER	1
5	Z812A	VALVE,LP,INTAKE	1
6	P09669C	MANIFOLD,LP INTAKE	1
7	P04999A	FILTER SILENCER	1
8	P09171A	GASKET,VALVE,HP,ALUMINUM	1
9	Z11775	VALVE,HP,INTAKE	1
10	CQP14870A	GASKET,VALVE,HP,COPPER	1
11	P12302B	MANIFOLD,HP INTAKE	1
12	P04137A	GASKET,VALVE,HP,ALUMINUM	1
13	Z115A	VALVE,HP,EXHAUST	1
14	CQP14869A	GASKET,VALVE,HP,COPPER	1
15	P12303B	MANIFOLD,HP EXHAUST	1
16	P04135A	GASKET,VALVE,LP,ALUMINUM	2
17	Z813A	VALVE,LP,EXHAUST	1
18	RE102E	MANIFOLD,LP EXHAUST	1
19	655ED080	SCREW (torque @ 200 in-lbs)	8

REPAIR PARTS

4, 5, 8, 9, 10, 12, 13, 14, 16, 17	Z5155	COMPLETE VALVE SET, WITH GASKET SET	1
4, 8, 10, 12, 14, 16	Z5156	COMPLETE VALVE GASKET SET	1
-	Z764	COMPRESSOR GASKET SET (excludes valve gaskets)	1

Cylinder Group – with Head Unloaders (optional)



357CAP810-00
Ref Drawing

Cylinder Group – with Head Unloaders (optional)

CYLINDER GROUP - HEAD UNLOADERS

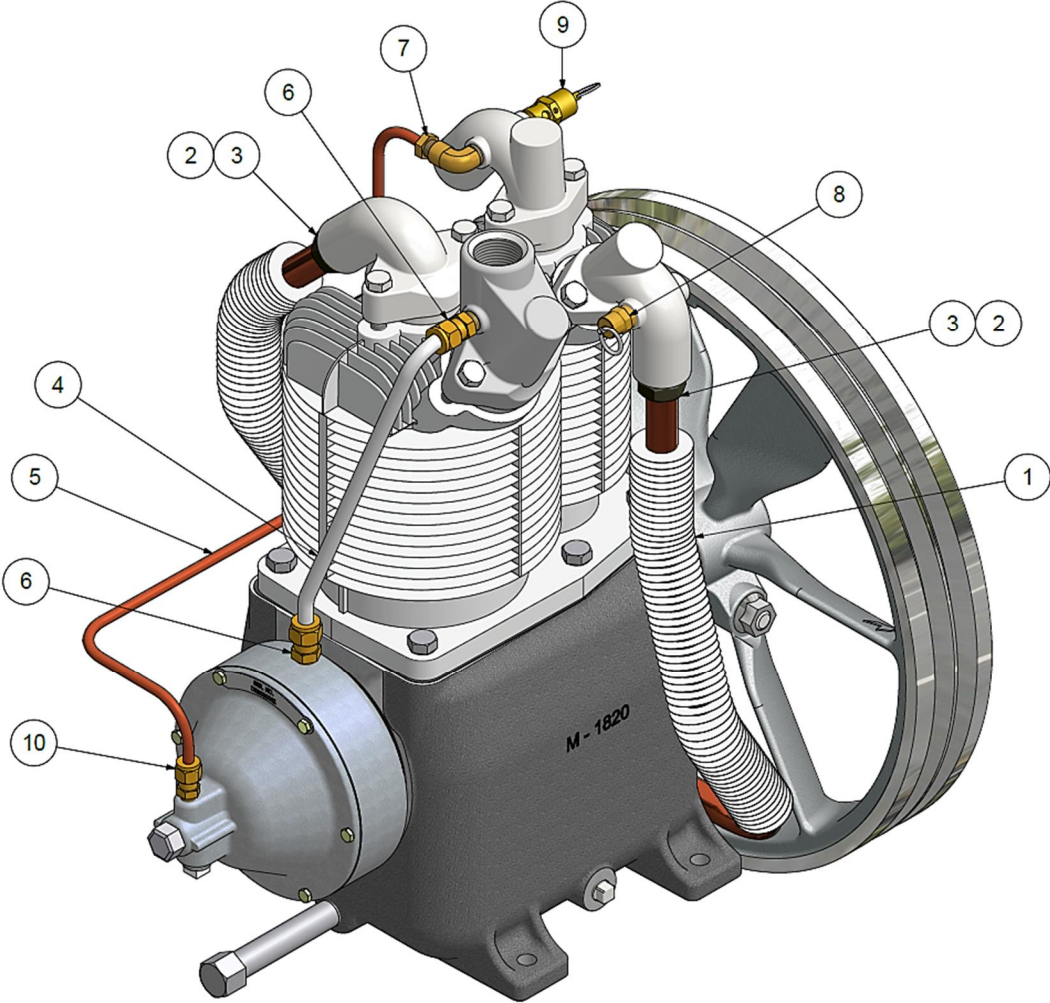
302CAP4042

1	NR29A	GASKET,CYLINDER FLANGE	1
2	P12237D	CYLINDER	1
3	M2345	SCREW (torque @ 400 in-lbs)	6
4	CQP14832A	GASKET,VALVE,LP,COPPER	1
5	Z4877A	VALVE,LP,INTAKE,UNLOADER	1
6	P09670C	MANIFOLD,LP INTAKE	1
7	P04999A	FILTER SILENCER	1
8	P09171A	GASKET,VALVE,HP,ALUMINUM	1
9	Z11936	VALVE,HP,INTAKE,UNLOADER	1
10	CQP14870A	GASKET,VALVE,HP,COPPER	1
11	P12304B	MANIFOLD,HP INTAKE,HU	1
12	P04137A	GASKET,VALVE,HP,ALUMINUM	1
13	Z115A	VALVE,HP,EXHAUST	1
14	CQP14869A	GASKET,VALVE,HP,COPPER	1
15	P12303B	MANIFOLD,HP EXHAUST	1
16	P04135A	GASKET,VALVE,LP,ALUMINUM	2
17	Z813A	VALVE,LP,EXHAUST,SUB-ASSY	1
18	RE102E	MANIFOLD,EXHAUST LP	1
19	655ED080	SCREW (torque @ 200 in-lbs)	8
20	P09923A	UNLOADER PISTON	2
21	P02547A	O-RING	2
22	P02306B	VALVE,CYLINDER,FOR HU	2
23	P00746A	GASKET	1

REPAIR PARTS

4, 5, 8, 9, 10, 12, 13, 14, 16, 17	Z6795	COMPLETE VALVE SET, WITH GASKET SET	1
4, 8, 10, 12, 14, 16	Z5156	COMPLETE VALVE GASKET SET	1
-	Z764	COMPRESSOR GASKET SET (excludes valve gaskets)	1
-	Z9144	KIT, HEAD UNLOADER CONVERSION (includes manifolds, unloader valves assemblies, pilot valve, fittings and tubing)	1

Tubing and Control Group – Standard



356CAP810-00
Ref Drawing

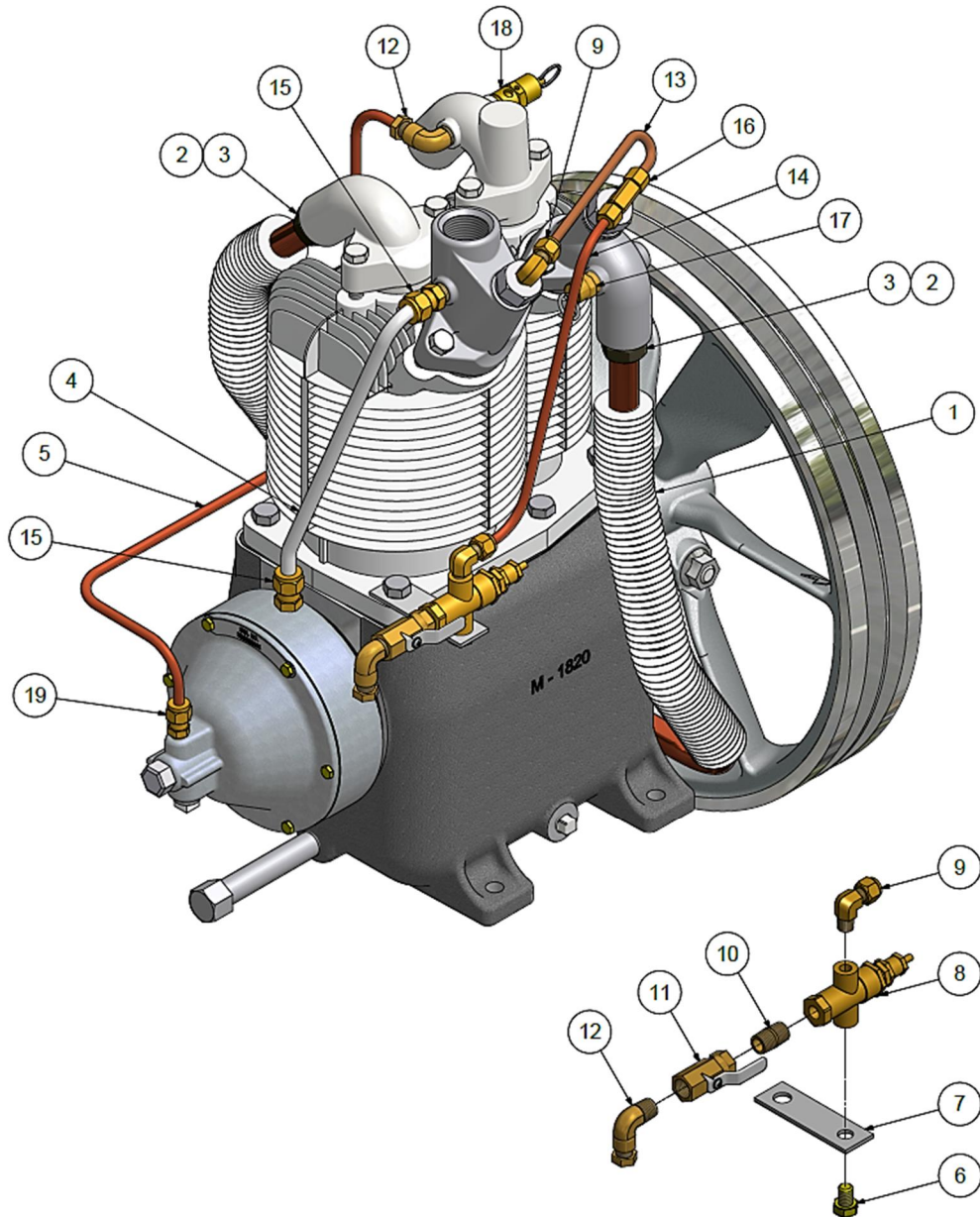
Tubing and Control Group – Standard

TUBING & CONTROL GROUP

300CAP272

1	P12514D	INTERCOOLER	1
2	SE542	COMPRESSION FERRULE	2
3	SE541	COMPRESSION NUT	2
4	UB375	BREATHER TUBE	1
5	306CAP294	UNLOADER TUBE	1
6	M2864	COMPRESSION FITTING, STRAIGHT	2
7	86A40	COMPRESSION FITTING, ELBOW	1
8	M3685	PRESSURE RELIEF VALVE, 75 PSIG	1
9	P12039A	PRESSURE RELIEF VALVE, 200 PSIG	1
10	M2863	COMPRESSION FITTING, STRAIGHT	1

Tubing and Control Group – with Head Unloaders (optional)



358CAP810-00
Ref Drawing

Tubing and Control Group – with Head Unloaders (optional)

TUBING & CONTROL GROUP - HEAD UNLOADERS

302CAP272

1	P12514D	INTERCOOLER	1
2	SE542	COMPRESSION FERRULE	2
3	SE541	COMPRESSION NUT	2
4	UB375	BREATHER TUBE	1
5	306CAP294	UNLOADER TUBE	1
6	M3465	SCREW	1
7	M807	BRACKET	1
8	M2854	PILOT VALVE 90-120# (125 psi discharge)	1
8	M2853	PILOT VALVE 140-170# (175 psi discharge)	1
9	M2868	COMPRESSION FITTING, ELBOW	2
10	63Z15	PIPE NIPPLE	1
11	VP1022988	BALL VALVE	1
12	86A40	COMPRESSION FITTING, ELBOW	2
13	P12556A	TUBE, MANIFOLD	1
14	300CAP294	TUBE, HEAD UNLOADER	1
15	M2864	COMPRESSION FITTING, STRAIGHT	2
16	M2879	COMPRESSION FITTING, TEE	1
17	M3685	PRESSURE RELIEF VALVE, 75 PSIG	1
18	P12039A	PRESSURE RELIEF VALVE, 200 PSIG	1
19	M2863	COMPRESSION FITTING, STRAIGHT	1

REPAIR PARTS

-	Z9144	KIT, HEAD UNLOADER CONVERSION (includes manifolds, unloader valves assemblies, pilot valve, fittings and tubing)	1
---	-------	--	---

High Temperature Switch (optional)



TEN008394-01
Ref Drawing

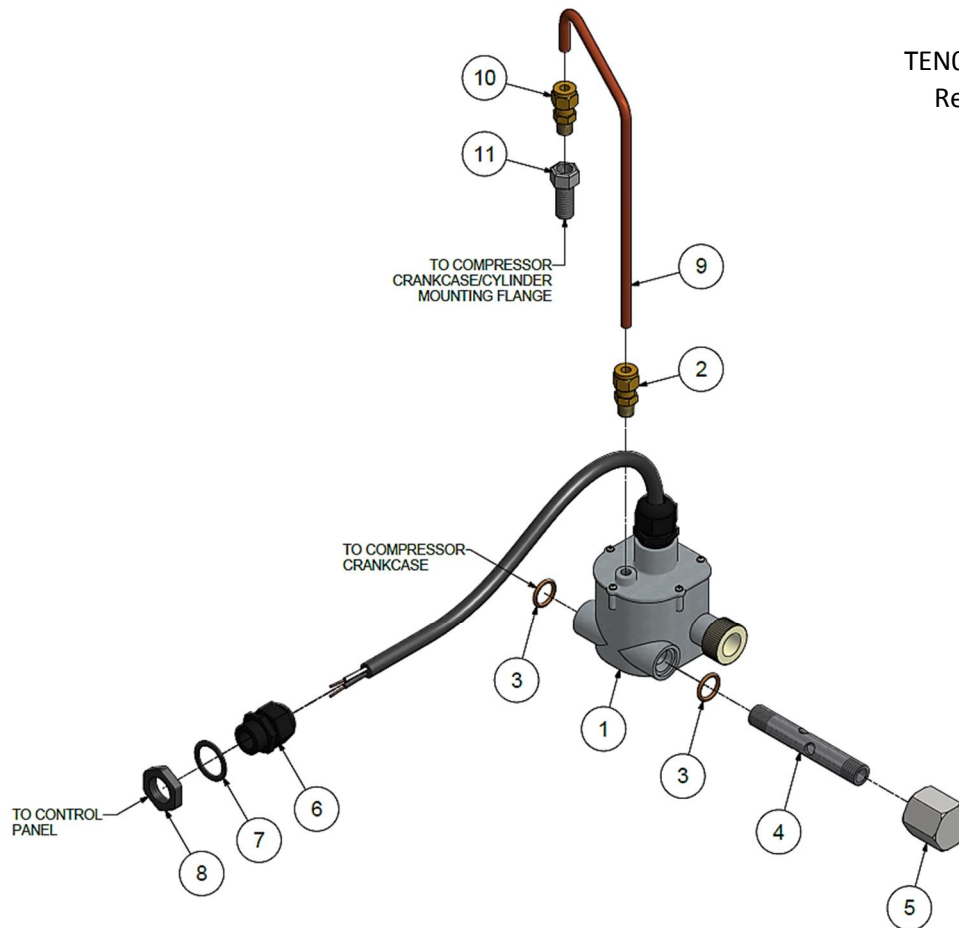
HIGH TEMPERATURE SWITCH

TEN008394

1	TEN001792	SWITCH, HIGH TEMP, 450F	1
2	003FE98	CORD GRIP	1
3	TEN008088	SEALING RING	1
4	TEN008089	LOCK NUT	1
5	M1003B	PIPE TEE	1
6	P08798A	PIPE NIPPLE	1

Low Oil Shutdown Control (optional)

TEN008800-00
Ref Drawing



LOW OIL SHUTDOWN CONTROL

TEN008800

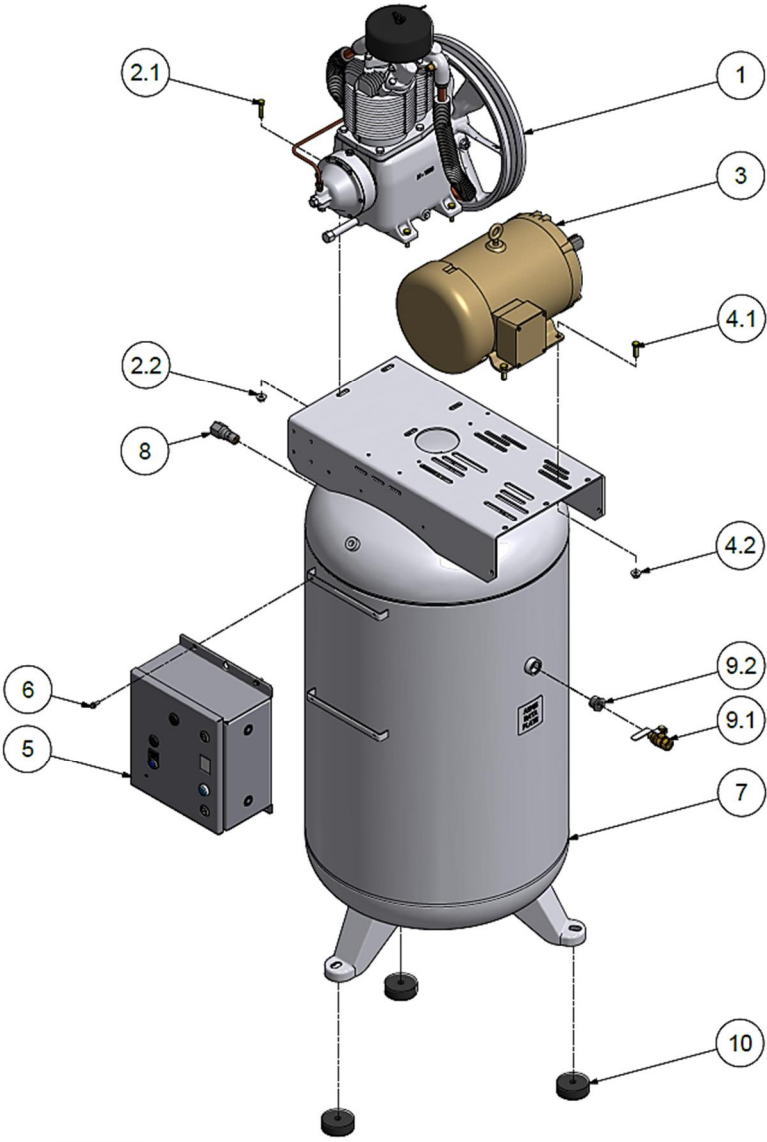
1	TEN008741	SWITCH-LOW OIL SHUTDOWN CONTROL	1
2	M2863	COMPRESSION FITTING, STRAIGHT	1
3	2009222	O-RING	2
4	CC1153304	OIL TUBE	1
5	LO30	RETAINER CAP	1
6	003FE98	CORD GRIP	1
7	TEN008088	SEALING RING	1
8	TEN008089	LOCK NUT	1
9	CC1007635	VENT TUBE	1
10	M2863	COMPRESSION FITTING, STRAIGHT	1
11	P13757A	VENT FITTING	1

REPAIR PARTS

1-11	TEN008808	KIT-LOSC w/CABLE, COMPLETE	1
1-4	TEN008855	KIT-LOSC w/CABLE, REPLACEMENT	1

Section 3 – Electric Packages

Vertical Package



400CAS810-00
Ref Drawing

Vertical Package

COMPRESSOR

R2-30A

1	R2-30A-P18	R10 COMPRESSOR	1
1	R2-30A-P73	R10 COMPRESSOR W/HEAD UNLOADERS	1

COMPRESSOR MOUNTING

401CAS4017

2.1	M3460	SCREW	4
2.2	M3483	NUT	4

MOTOR

3	-	SEE MOTOR LISTING ON FOLLOWING PAGE	1
---	---	-------------------------------------	---

MOTOR MOUNTING

401CAS4015

405CAS4015

4.1	M3458	SCREW (2HP)	4
4.1	M3440	SCREW (3HP)	4
4.2	M3485	NUT (2HP)	4
4.2	M3483	NUT (3HP)	4

SIMPLEX CONTROL PANEL

5	-	SEE PART NUMBER LISTING IN CONTROL PANEL MANUAL	1
---	---	---	---

PANEL MOUNTING

6	M3349	SCREW	4
---	-------	-------	---

VERTICAL AIR RECEIVER

7	TEN007606	RECEIVER, 60 GALLON VERTICAL, 200PSI	1
7	TEN005603	RECEIVER, 80 GALLON VERTICAL, 200PSI	1
7	TEN007002	RECEIVER, 120 GALLON VERTICAL, 200PSI	1

CHECK VALVE

8	P05822A	CHECK VALVE	1
---	---------	-------------	---

BALL VALVE

405CAS4061

9.1	M3590	BALL VALVE	1
9.2	M483	BUSHING	1

VIBRATION ISOLATORS (OPTIONAL)

10	P14607A	ISOLATOR,VIBRATION,3"DIA.	4
----	---------	---------------------------	---

Horizontal Package – Simplex

COMPRESSOR

R2-30A

1	R2-30A-P18	R10 COMPRESSOR	1
1	R2-30A-P73	R10 COMPRESSOR W/HEAD UNLOADERS	1

COMPRESSOR MOUNTING

401CAS4017

2.1	M3460	SCREW	4
2.2	M3483	NUT	4

MOTOR

3	-	SEE MOTOR LISTING ON FOLLOWING PAGE	1
---	---	-------------------------------------	---

MOTOR MOUNTING

401CAS4015

405CAS4015

4.1	M3458	SCREW (2HP)	4
4.1	M3440	SCREW (3HP)	4
4.2	M3485	NUT (2HP)	4
4.2	M3483	NUT (3HP)	4

SIMPLEX CONTROL PANEL

5	-	SEE PART NUMBER LISTING IN CONTROL PANEL MANUAL	1
---	---	---	---

PANEL MOUNTING

6.1	TEN008116	BRACKET-PANEL,30GL HORIZONTAL	1
6.1	TEN008117	BRACKET-PANEL,60-80GL HORIZONTAL	1
6.1	TEN008118	BRACKET-PANEL,120GL HORIZONTAL	1
6.2	M3349	SCREW	3
6.3	50AW3	NUT	1
6.4	M1454	SCREW	1

HORIZONTAL AIR RECEIVER / BASE PLATE

7	TEN007508	RECEIVER, 30 GALLON HORIZONTAL, 200PSI	1
7	TEN007285	RECEIVER, 60 GALLON HORIZONTAL, 200PSI	1
7	TEN007325	RECEIVER, 80 GALLON HORIZONTAL, 200PSI	1
7	TEN005638	RECEIVER, 120 GALLON HORIZONTAL, 200PSI	1
7	P09195C	BASE MOUNT PLATE (not shown)	1

CHECK VALVE

8	P05822A	CHECK VALVE	1
8	M953B	BUSHING (FOR 120GL - NOT SHOWN)	1

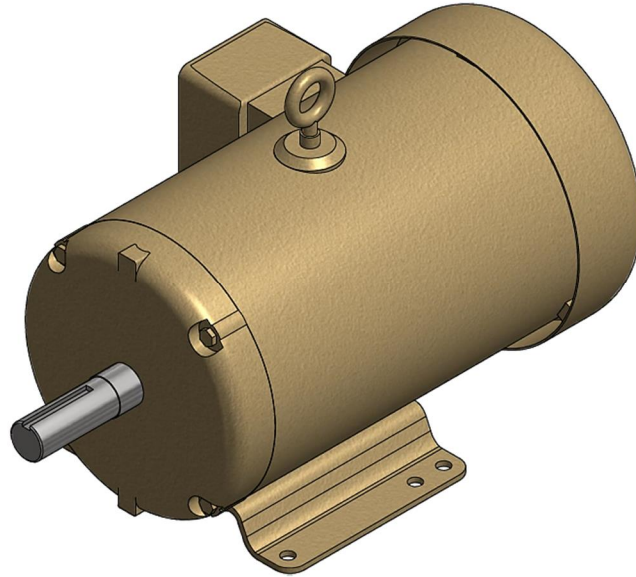
BALL VALVE

9	M3590	BALL VALVE	1
---	-------	------------	---

VIBRATION ISOLATORS (OPTIONAL)

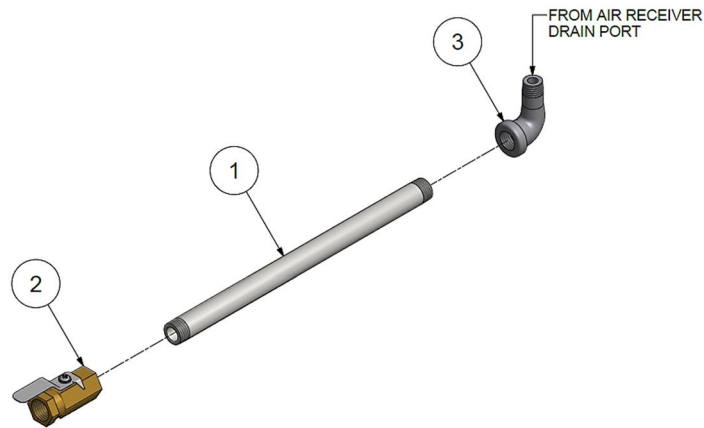
10	P14607A	ISOLATOR,VIBRATION,3"DIA. (30 & 120 GL)	4
10	P14608A	ISOLATOR,VIBRATION,4"DIA. (60 & 80 GL)	4

Electric Motor List



MOTOR								R2-30A
3	P04661A	MOTOR	2HP	115V-208V-230V	60HZ	1PH	ODP	1
3	P08607A	MOTOR	2HP	115V-208V-230V	60HZ	1PH	TEFC	1
3	24CA6628	MOTOR	2HP	208V	60HZ	3PH	ODP	1
3	24CA6630	MOTOR	2HP	208V	60HZ	3PH	TEFC	1
3	24CA6631	MOTOR	2HP	230V-460V	60HZ	3PH	ODP	1
3	24CA6632	MOTOR	2HP	230V-460V	60HZ	3PH	TEFC	1
3	24CA6633	MOTOR	2HP	575V	60HZ	3PH	ODP	1
3	24CA6634	MOTOR	2HP	575V	60HZ	3PH	TEFC	1
3	P04662A	MOTOR	3HP	115V-208V	60HZ	1PH	ODP	1
3	P10702A	MOTOR	3HP	115V-208V	60HZ	1PH	TEFC	1
3	P04662A	MOTOR	3HP	230V	60HZ	1PH	ODP	1
3	P08326A	MOTOR	3HP	230V	60HZ	1PH	TEFC	1
3	24CA6636	MOTOR	3HP	208V	60HZ	3PH	ODP	1
3	24CA6638	MOTOR	3HP	208V	60HZ	3PH	TEFC	1
3	24CA6639	MOTOR	3HP	230V-460V	60HZ	3PH	ODP	1
3	24CA6640	MOTOR	3HP	230V-460V	60HZ	3PH	TEFC	1
3	24CA6641	MOTOR	3HP	575V	60HZ	3PH	ODP	1
3	24CA6642	MOTOR	3HP	575V	60HZ	3PH	TEFC	1

Tank Drain – Manual



401CAS810-00
Ref Drawing

MANUAL TANK DRAIN (30GL HORIZONTAL)

CC1044092

1	M933B	PIPE NIPPLE	1
2	VP1022988	BALL VALVE	1
3	M980B	PIPE ELBOW	1

MANUAL TANK DRAIN (60-80GL HORIZONTAL & 60-80-120GL VERTICAL)

Z4233

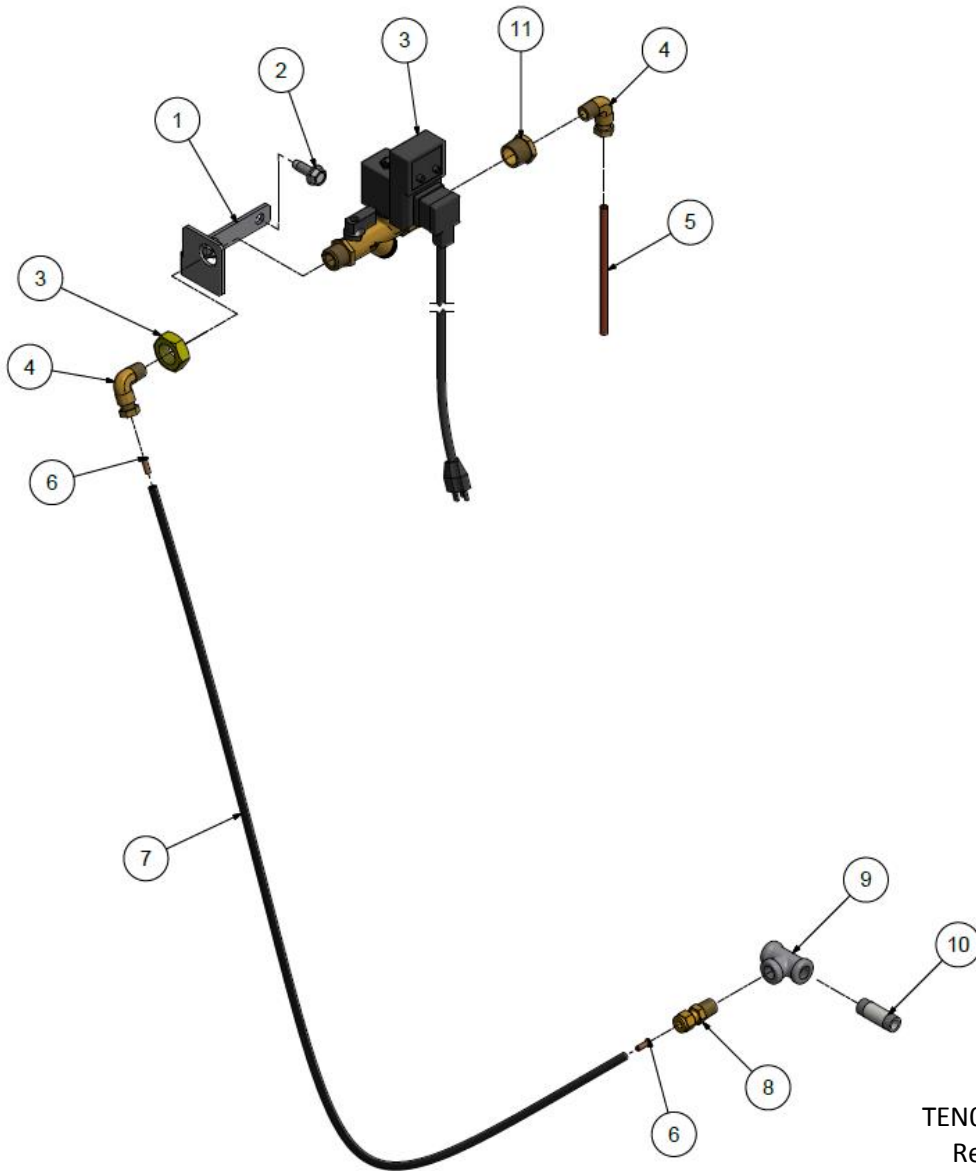
1	M1020B	PIPE NIPPLE	1
2	VP1022988	BALL VALVE	1
3	M980B	PIPE ELBOW	1

MANUAL TANK DRAIN (120-240GL HORIZONTAL)

401CAS4027

1	M1020B	PIPE NIPPLE	1
2	VP1022988	BALL VALVE	1
3	M980B	PIPE ELBOW	1
4	M1318 (NOT SHOWN)	PIPE BUSHING	1

Tank Drain – Electric (optional)



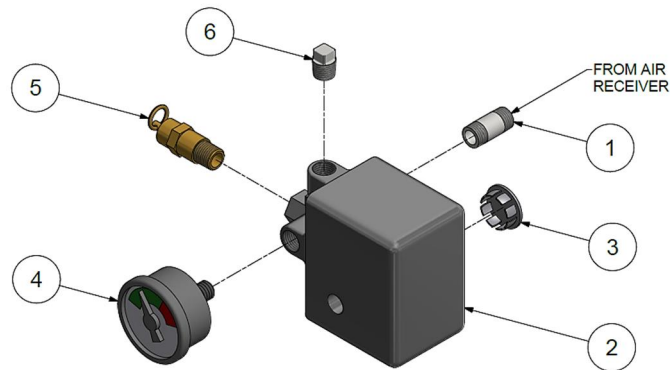
TEN002668-01
Ref Drawing

ELECTRIC TANK DRAIN

TEN002668

1	CC1049403	BRACKET	1
2	M1454	SCREW	2
3	TEN001368	VALVE,ETD,W/STRAINER	1
4	86A40	COMPRESSION FITTING, ELBOW	2
5	M2471	COPPER TUBING	6 in
6	P10118A	TUBE INSERT	2
7	P10117A	PLASTIC TUBING	5 ft
8	M2862	COMPRESSION FITTING, STRAIGHT	1
9	M1003B	PIPE TEE	1
10	M1016B	PIPE NIPPLE	1
11	M3080	PIPE BUSHING	1

Control Group – Start/Stop



402CAS810-00
Ref Drawing
(Nema 1)

START/STOP CONTROL, NEMA 1

401CAS4052
403CAS4052

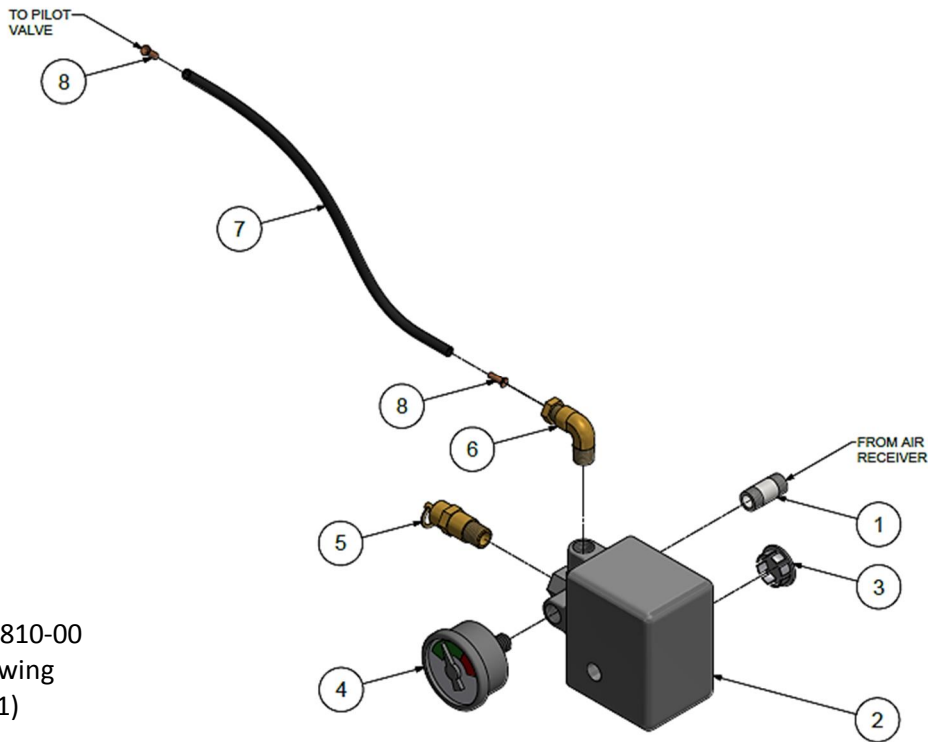
1	P08798A	PIPE NIPPLE	1
2	P14205A	SWITCH,PRESSURE,95-125 (125 psi discharge)	1
2	P14202A	SWITCH,PRESSURE,140-175 (175 psi discharge)	1
3	M2352	KNOCKOUT HOLE PLUG	1
4	M519C	PRESSURE GAUGE	1
5	M2843	PRESSURE RELIEF VALVE, 200#	1
6	64AA5	PIPE PLUG	1

START/STOP CONTROL, NEMA 4

405CAS4052

1	P08798A	PIPE NIPPLE	1
2	P07333A	SWITCH,PRESSURE,N4 (125 or 175 psi discharge)	1
4	M519C	PRESSURE GAUGE	1
5	M2843	PRESSURE RELIEF VALVE, 200#	1
-	64K1 (not shown)	PIPE CROSS	1

Control Group – Dual Control (optional)



408CAS810-00
Ref Drawing
(Nema 1)

DUAL CONTROL, NEMA 1

407CAS4052
411CAS4052

1	P08798A	NIPPLE	1
2	P14205A	SWITCH,PRESSURE,95-125 (125 psi discharge)	1
2	P14202A	SWITCH,PRESSURE,140-175 (175 psi discharge)	1
3	M2352	KNOCKOUT HOLE PLUG	1
4	M519C	PRESSURE GAUGE	1
5	M2843	PRESSURE RELIEF VALVE, 200#	1
6	86A40	COMPRESSION FITTING, ELBOW	1
7	P10117A	PLASTIC TUBING	3.5 ft
8	P10118A	TUBE INSERT	2

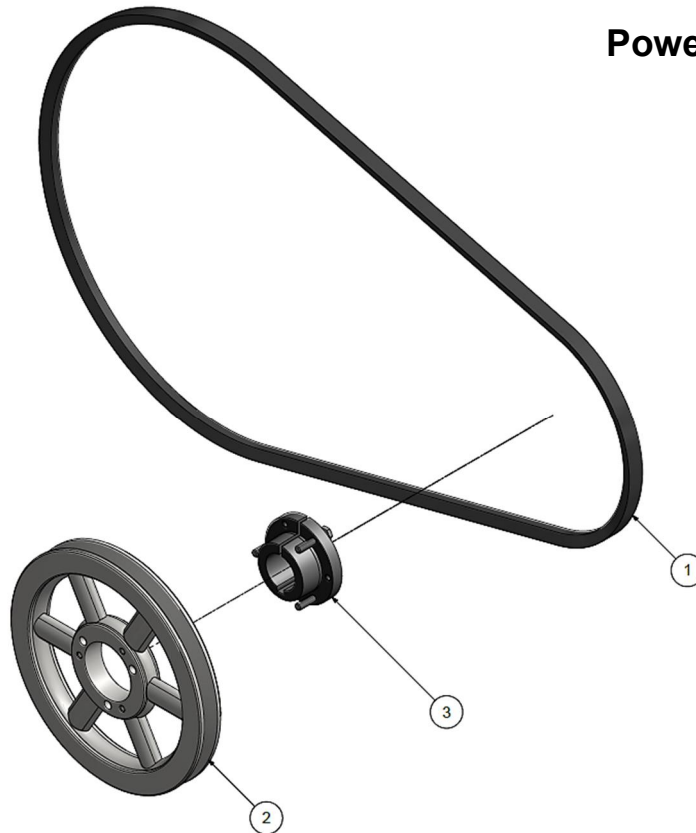
DUAL CONTROL, NEMA 4

409CAS4052
413CAS4052

1	P08798A	NIPPLE	1
-	64K1 (not shown)	PIPE CROSS	1
2	P07333A	SWITCH,PRESSURE,N4 (125 or 175 psi discharge)	1
4	M519C	PRESSURE GAUGE	1
5	M2843	PRESSURE RELIEF VALVE, 200#	1
6	86A40	COMPRESSION FITTING, ELBOW	1
7	P10117A	PLASTIC TUBING	3 ft
8	P10118A	TUBE INSERT	2

Power Transmission

403CAS810-00
Ref Drawing



POWER TRANSMISSION - R10,125PSI,2HP/1PH

401CAS4072

1	A62	V-BELT	1
2	TEN005192	PULLEY,5.15OD,SDS,1VA/B	1
3	P09358A	BUSHING,PULLEY,SDS,1-1/8 BORE	1

POWER TRANSMISSION - R10,125PSI,2HP/3PH

402CAS4072

1	A62	V-BELT	1
2	TEN005192	PULLEY,5.15OD,SDS,1VA/B	1
3	P09423A	BUSHING,PULLEY,SDS,7/8 BORE	1

POWER TRANSMISSION - R10,175PSI,2HP/1PH

403CAS4072

1	AX61	V-BELT	1
2	TEN005193	PULLEY,4.35OD,SH,1VA/B	1
3	P09855A	BUSHING,PULLEY,SH,1-1/8 BORE	1

POWER TRANSMISSION - R10,175PSI,2HP/3PH

404CAS4072

1	AX61	V-BELT	1
2	TEN005193	PULLEY,4.35OD,SH,1VA/B	1
3	P11520A	BUSHING,PULLEY,SH,7/8 BORE	1

POWER TRANSMISSION - R10,125PSI,3HP

405CAS4072

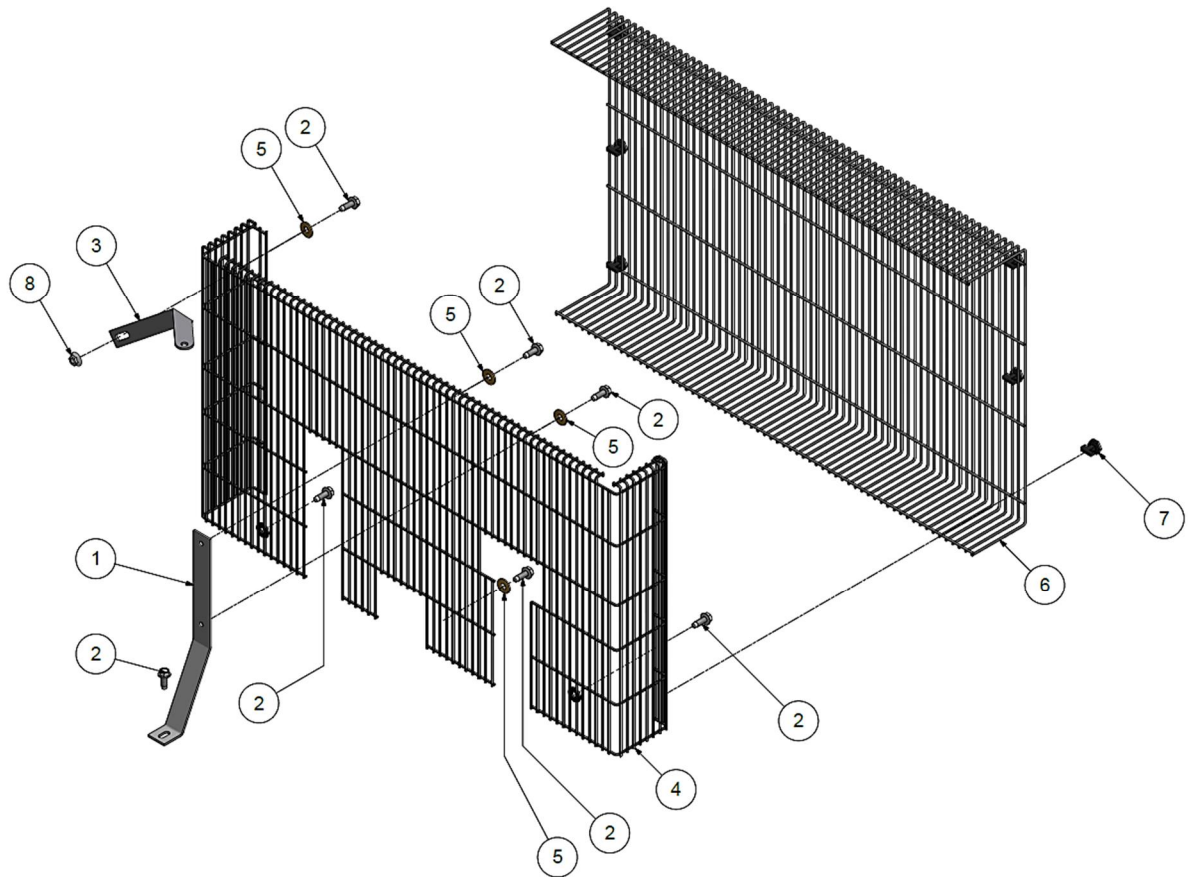
1	A64	V-BELT	1
2	TEN005194	PULLEY,7.75OD,SDS,1VA/B	1
3	P09358A	BUSHING,PULLEY,SDS,1-1/8 BORE	1

POWER TRANSMISSION - R10,175PSI,3HP

406CAS4072

1	A64	V-BELT	1
2	TEN005195	PULLEY,7.35OD,SDS,1VA/B	1
3	P09358A	BUSHING,PULLEY,SDS,1-1/8 BORE	1

Belt Guard – Standard



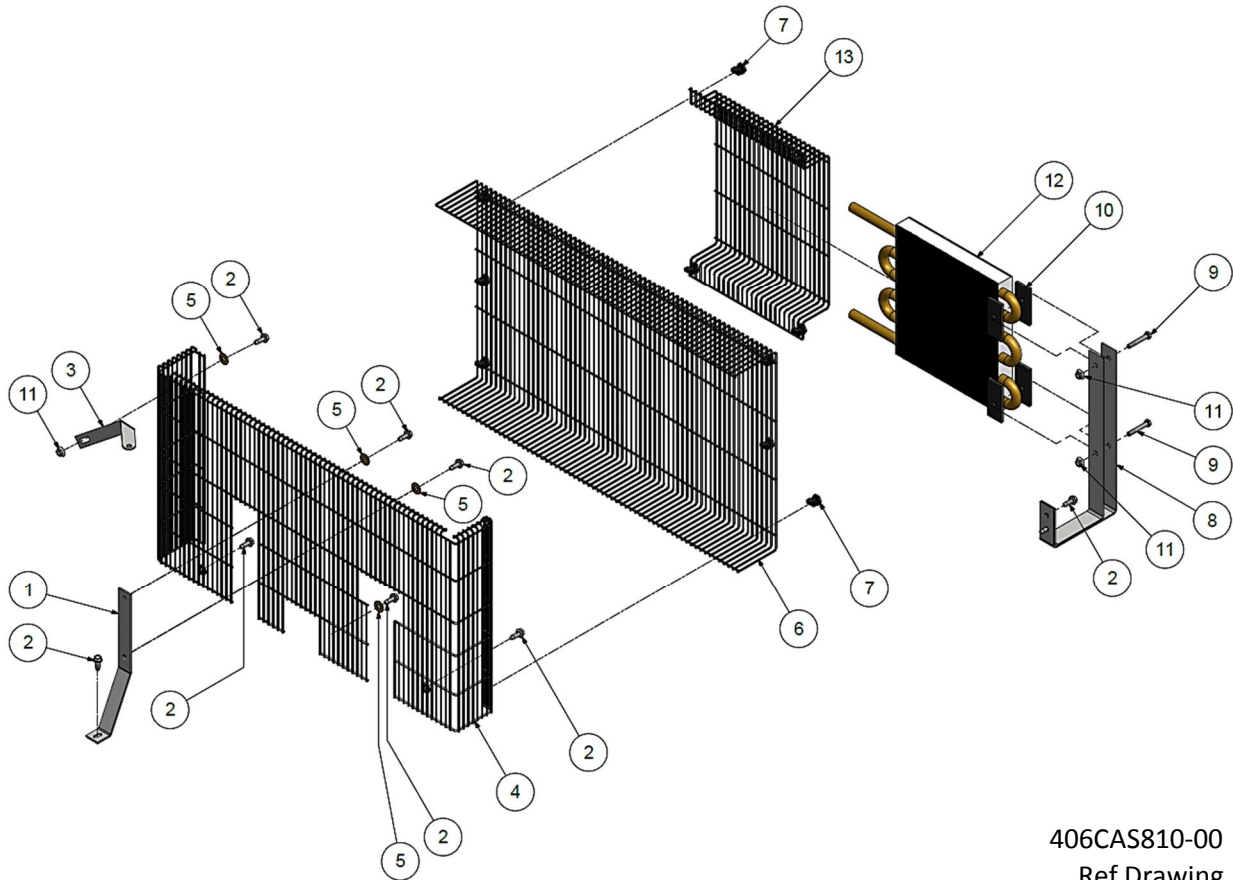
404CAS810-00
Ref Drawing

BELTGUARD – STANDARD

CC1060459

1	P09985B	BRACKET	1
2	M1454	SCREW	6
3	P14085B	BRACKET	1
4	CC1055727	BELTGUARD BACK	1
5	M3056	WASHER	6
6	CC1055728	BELTGUARD FRONT	1
7	P10005A	CLIP	6
8	M3485	NUT	1

Belt Guard – with Aftercooler (optional)



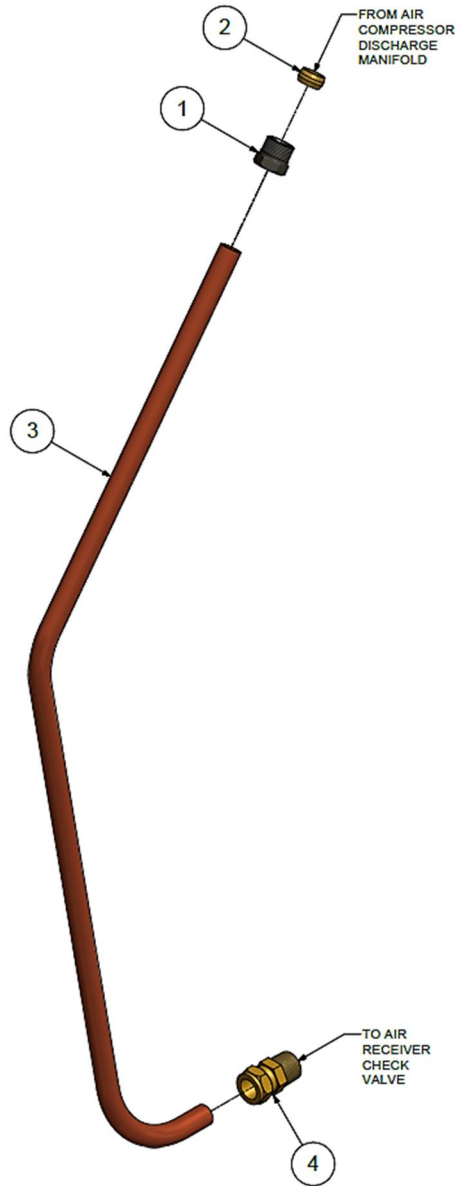
406CAS810-00
Ref Drawing

BELTGUARD - WITH AFTERCOOLER

CC1060458

Part No.	Part Description	Quantity
1	P09985B BRACKET	1
2	M1454 SCREW	8
3	P14085B BRACKET	1
4	CC1055727 BELTGUARD BACK	1
5	M3056 WASHER	3
6	CC1055728 BELTGUARD FRONT	1
7	P10005A CLIP	10
8	CC1055729 BRACKET	1
9	M2627 SCREW	2
10	M1367 ISOLATOR,VIBRATION	4
11	M3485 NUT	3
12	P14477B AFTERCOOLER	1
13	P14072C AFTERCOOLER GUARD	1

Discharge Piping – Vertical, Standard



405CAS810-00
Ref Drawing

Discharge Piping – Vertical, Standard

DISCHARGE PIPING - 60GL VERTICAL, STANDARD

417CAS4022

1	SE541	COMPRESSION NUT	1
2	SE542	COMPRESSION FERRULE	1
3	TEN010239	TUBE-DISCHARGE	1
4	M2867	COMPRESSION FITTING, STRAIGHT	1

DISCHARGE PIPING - 80GL VERTICAL, STANDARD

407CAS4022

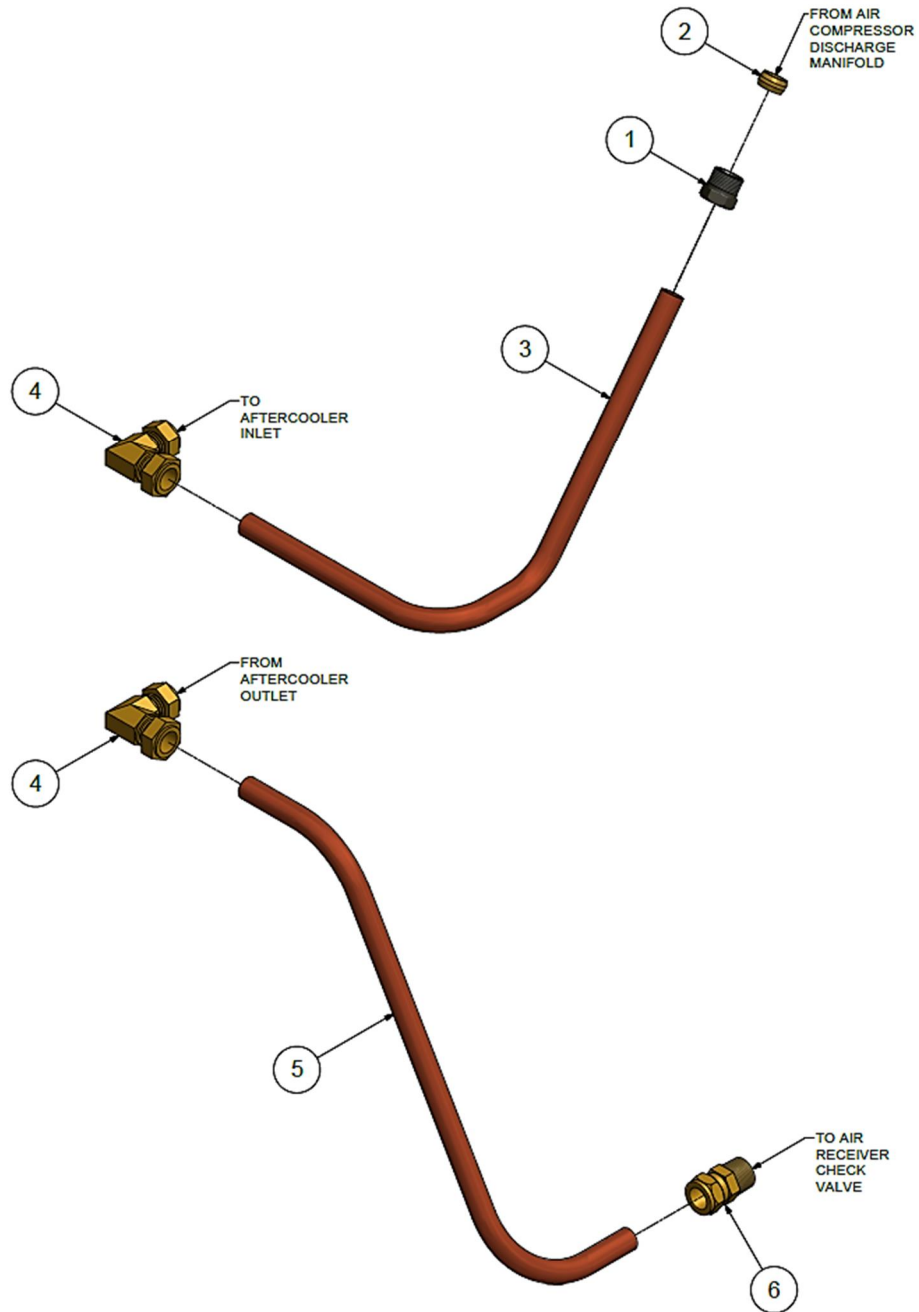
1	SE541	COMPRESSION NUT	1
2	SE542	COMPRESSION FERRULE	1
3	TEN010240	TUBE-DISCHARGE	1
4	M2867	COMPRESSION FITTING, STRAIGHT	1

DISCHARGE PIPING - 120GL VERTICAL, STANDARD

419CAS4022

1	SE541	COMPRESSION NUT	1
2	SE542	COMPRESSION FERRULE	1
3	TEN010241	TUBE-DISCHARGE	1
4	M2350	COMPRESSION FITTING, ELBOW	1

Discharge Piping – Vertical, with Aftercooler (optional)



407CAS810-00
Ref Drawing

Discharge Piping – Vertical, with Aftercooler (optional)

DISCHARGE PIPING - 60GL VERTICAL, WITH AFTERCOOLER

418CAS4022

1	SE541	COMPRESSION NUT	1
2	SE542	COMPRESSION FERRULE	1
3	P10143B	TUBE-DISCHARGE, UPPER	1
4	M2288	COMPRESSION FITTING, ELBOW	2
5	TEN010229	TUBE-DISCHARGE, LOWER	1
6	M2867	COMPRESSION FITTING, STRAIGHT	1

DISCHARGE PIPING - 80GL VERTICAL, WITH AFTERCOOLER

401CAS4022

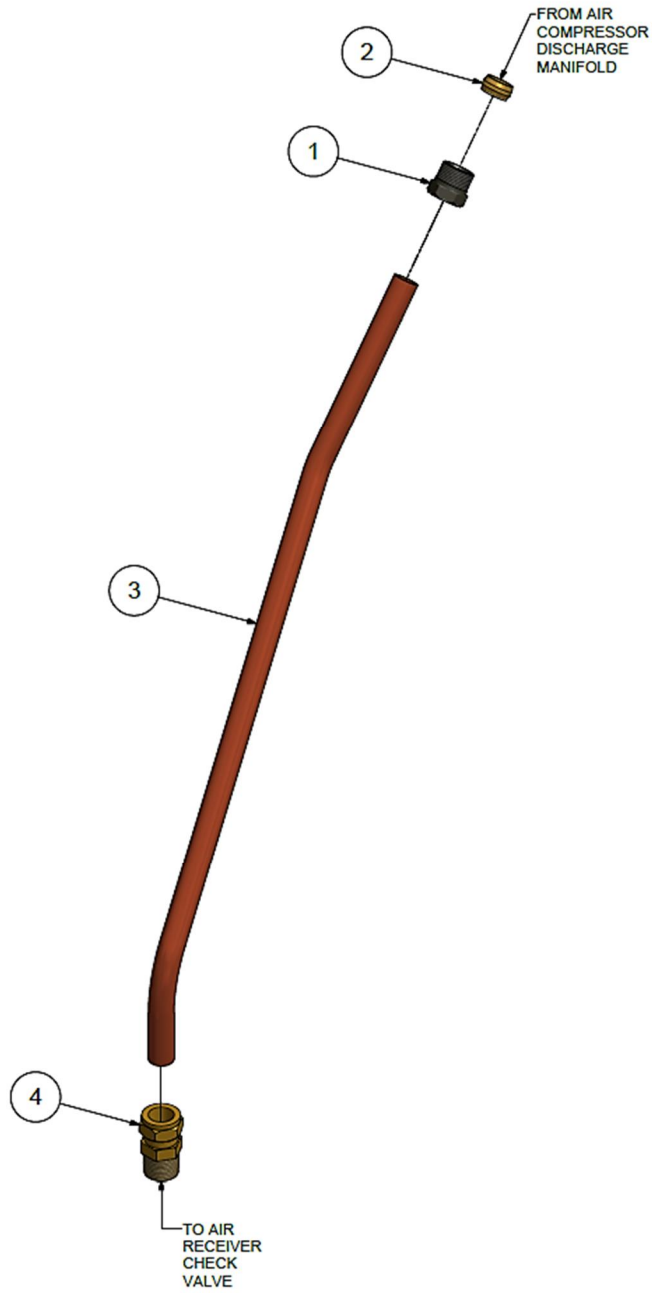
1	SE541	COMPRESSION NUT	1
2	SE542	COMPRESSION FERRULE	1
3	P10143B	TUBE-DISCHARGE, UPPER	1
4	M2288	COMPRESSION FITTING, ELBOW	2
5	TEN009098	TUBE-DISCHARGE, LOWER	1
6	M2867	COMPRESSION FITTING, STRAIGHT	1

DISCHARGE PIPING - 120GL VERTICAL, WITH AFTERCOOLER

420CAS4022

1	SE541	COMPRESSION NUT	1
2	SE542	COMPRESSION FERRULE	1
3	P10143B	TUBE-DISCHARGE, UPPER	1
4	M2288	COMPRESSION FITTING, ELBOW	2
5	TEN010230	TUBE-DISCHARGE, LOWER	1
6	M2350	COMPRESSION FITTING, ELBOW	1

Discharge Piping – Horizontal, Standard



410CAS810-00
Ref Drawing

Discharge Piping – Horizontal, Standard

DISCHARGE PIPING - BASE MOUNT, STANDARD

423CAS4022

1	SE541	COMPRESSION NUT	1
2	SE542	COMPRESSION FERRULE	1

DISCHARGE PIPING - 30GL HORIZONTAL, STANDARD

413CAS4022

1	SE541	COMPRESSION NUT	1
2	SE542	COMPRESSION FERRULE	1
3	TEN010235	TUBE-DISCHARGE	1
4	M2350	COMPRESSION FITTING, ELBOW	1

DISCHARGE PIPING - 60GL HORIZONTAL, STANDARD

415CAS4022

1	SE541	COMPRESSION NUT	1
2	SE542	COMPRESSION FERRULE	1
3	TEN010236	TUBE-DISCHARGE	1
4	M2867	COMPRESSION FITTING, STRAIGHT	1

DISCHARGE PIPING - 80GL HORIZONTAL, STANDARD

421CAS4022

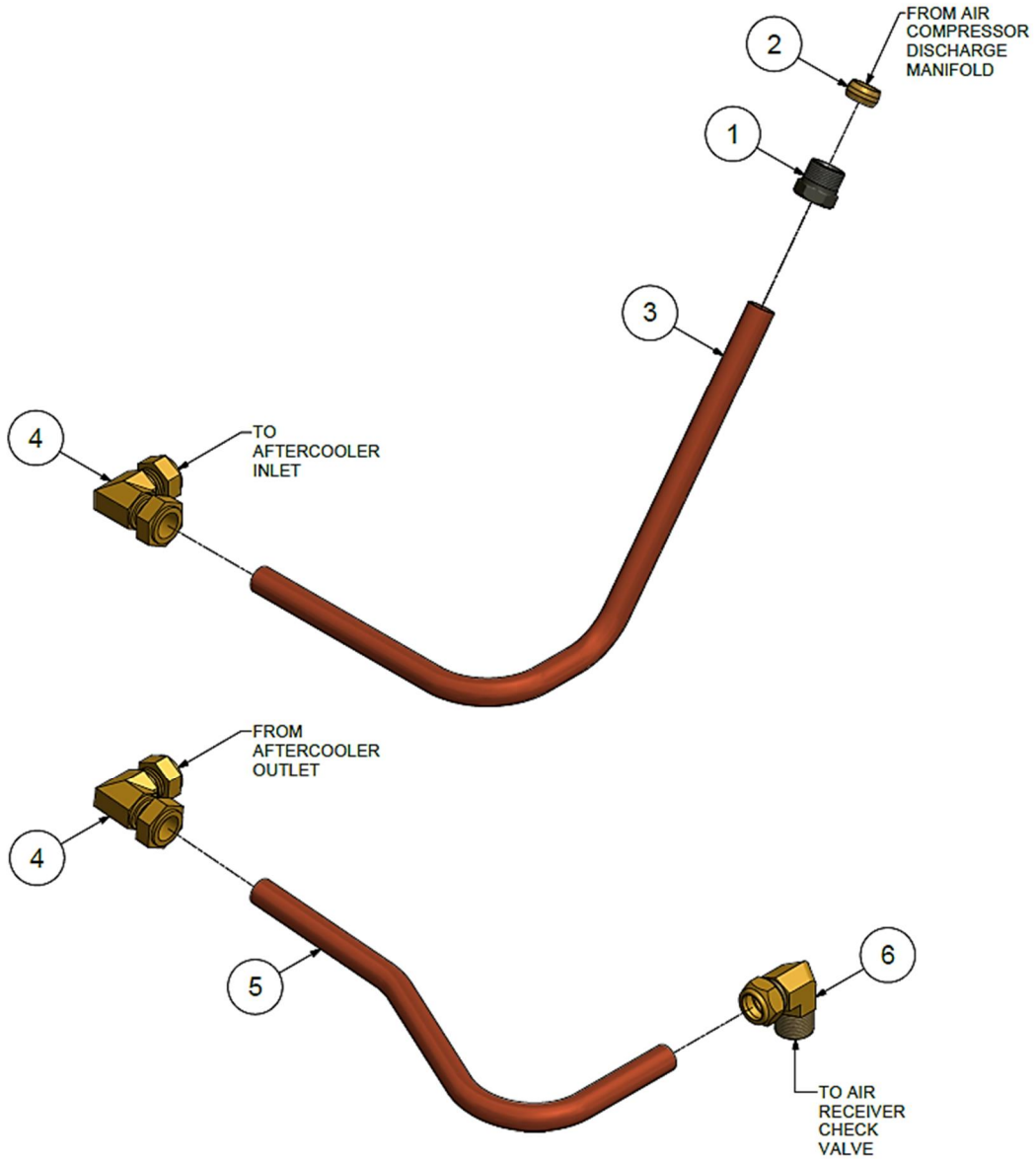
1	SE541	COMPRESSION NUT	1
2	SE542	COMPRESSION FERRULE	1
3	TEN010244	TUBE-DISCHARGE	1
4	M2867	COMPRESSION FITTING, STRAIGHT	1

DISCHARGE PIPING - 120GL HORIZONTAL, STANDARD

422CAS4022

1	SE541	COMPRESSION NUT	1
2	SE542	COMPRESSION FERRULE	1
3	TEN010244	TUBE-DISCHARGE	1
4	M2867	COMPRESSION FITTING, STRAIGHT	1

Discharge Piping – Horizontal, with Aftercooler (optional)



411CAS810-00
Ref Drawing

Discharge Piping – Horizontal, with Aftercooler (optional)

DISCHARGE PIPING - BASE MOUNT, WITH AFTERCOOLER

424CAS4022

1	SE541	COMPRESSION NUT	1
2	SE542	COMPRESSION FERRULE	1
3	P10143B	TUBE-DISCHARGE, UPPER	1
4	M2288	COMPRESSION FITTING, ELBOW	2
5	M3424 (NOT SHOWN)	NUT	2
6	M3471 (NOT SHOWN)	SCREW	2
7	CC1032600 (NOT SHOWN)	COUPLING, BRACKETED	1

DISCHARGE PIPING - 30GL HORIZONTAL, WITH AFTERCOOLER

414CAS4022

1	SE541	COMPRESSION NUT	1
2	SE542	COMPRESSION FERRULE	1
3	P10143B	TUBE-DISCHARGE, UPPER	1
4	M2288	COMPRESSION FITTING, ELBOW	2
5	TEN010160	TUBE-DISCHARGE, LOWER	1
6	M2867	COMPRESSION FITTING, STRAIGHT	1

DISCHARGE PIPING - 60-80-120GL HORIZONTAL, WITH AFTERCOOLER

416CAS4022

1	SE541	COMPRESSION NUT	1
2	SE542	COMPRESSION FERRULE	1
3	P10143B	TUBE-DISCHARGE, UPPER	1
4	M2288	COMPRESSION FITTING, ELBOW	2
5	TEN010171	TUBE-DISCHARGE, LOWER	1
6	M2350	COMPRESSION FITTING, ELBOW	1

COMPRESSED
AIR ADVISORS

Inc.

Compressed Air Advisors, Inc.

Phone: 877.247.2381

info@compressedairadvisors.com

www.compressedairadvisors.com



* C Q F 3 4 5 3 V E R 0 0 *
CQF3453VER00

COMPRESSED
AIR ADVISORS
Inc.

CHAMPION

For additional information, contact your local representative or visit:
www.championpneumatic.com/contactus.aspx

©2018 Gardner Denver, Inc. Printed in U.S.A.



 Please recycle after use.