

**SAFETY AND PROPER USAGE**

To ensure safe and enduring performance of this product, you must comply strictly with the instructions enclosed herein. Non-compliance with instructions or improper handling of the product will void your warranty! Usage of this product in conditions not specified in this manual or in contrary to the instructions hereby provided is considered IMPROPER. The manufacturer will not be held liable for any damages resulting from improper use of the product.

**SAFETY & WARNING INSTRUCTIONS**

- Observe valid and generally accepted safety rules when planning, installing and using this product.
- Take proper measures to prevent unintentional operation of the product or damage to it.
- Do not attempt to disassemble this product or lines in the system while they are under pressure.
- Always depressurize the compressed air system before working on the system.

It is important that personnel use safe working practices and observe all regulations and legal requirements for safety when operating this product. When handling, operating or carrying out maintenance on this product, personnel must employ safe engineering practices and observe all local health & safety requirements & regulations. International users refer to regulations that prevail within the country of installation. Most accidents, which occur during the operation and maintenance of machinery, are the result of failure to observe basic safety rules or precautions. An accident can often be avoided by recognizing a situation that is potentially dangerous. Improper operation or maintenance of this product could be dangerous and result in an accident causing injury or death. The manufacturer cannot anticipate every possible circumstance, which may represent a potential hazard. The WARNINGS in this manual cover the most common potential hazards and are therefore not all-inclusive. If the user employs an operating procedure, an item of equipment or a method of working which is not specifically recommended by the manufacturer he must ensure that the product will not be damaged or made unsafe and that there is no risk to persons or property.

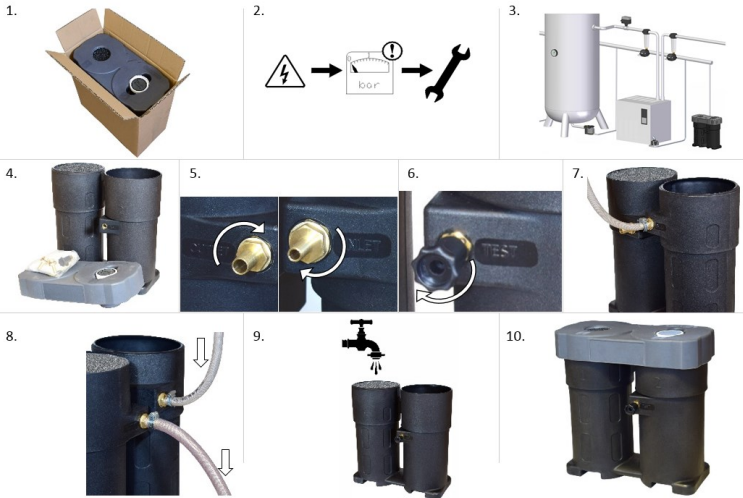
**NEVER CHANGE ORIGINAL COMPONENTS WITH ALTERNATIVES**

**⚠ WARNING** This product can expose you to chemicals including lead, which is known to the State of California to cause cancer and/or birth defects or other reproductive harm. For more information, go to [www.P65Warnings.ca.gov](http://www.P65Warnings.ca.gov)

**9603 JN**



**SEP premium 130**



**INSTALLATION INSTRUCTIONS**

*Before installing this product, make sure it complies with your request and that it suits your application!*

1. Unpack the unit and visually inspect for any transport damage incurred after leaving our factory.
2. Depressurize the system before installation or maintenance is carried out!
3. Locate a suitable point in your compressor room to place your separator. This point must be near a suitable sewage point. The unit is designed to easily fit along a wall.
4. Remove the lid and take the installation kit from of the housing.  
*You can use the clothing kit to protect your own clothing.*
5. Screw the inlet and outlet nipples with rubber rings into their marked locations using a 22mm wrench.
6. Screw the test valve with ring into its marked location using a 17mm wrench.  
*Make sure that the test valve is closed.*
7. Connect the condensate collection pipe to the inlet nipple.
8. Connect the outlet nipple to the discharge pipe leading to a suitable sewage point.  
*Make sure the condensate always flows downwards.*
9. Fill the unit with water from tower 1 until both towers are filled to, and water flows out of, the outlet point.  
*Tip: spraying water over the black element in tower 2 before filling the housing helps prevent carbon dust from spreading. Push the black element down until all the trapped air has escaped out of the element.*
10. Put the lid back onto the towers and place the Test bottle in its location on top of the lid. *Your Oil/Water Separator is ready for operation!*  
*\*We recommend that initially a daily check is made on the quality of the output from your condensate cleaner. After a day or so, the output should be clear when viewed using the test bottle.*

**TECHNICAL SPECIFICATIONS**

Max. oil adsorption element's	0,8 gallon
Inlet connection	1/2" BSP
Outlet connection	1/2" BSP
Test drain	Yes
Housing material	PE
Housing colour	Black
Lid colour	Grey
Mineral lubricants	Yes
Synthetic lubricants	Yes
Stabile condensate emulsions	Yes
Poly Glycol	Yes, <i>consult factory</i>
Max. compressor capacity	130 CFM
Ambient and Media temperature*	34 – 131 °F (1 – 55 °C)

\*Avoid placing oil/water separators in direct sunlight as this might expose the unit to temperatures that could exceed maximum temperature specifications.

**DIMENSIONS (inches)**



**EXPLODED VIEW**



**REPLACEMENT PARTS**

Description	Part No.

**COMPRESSED AIR ADVISORS**  
Inc.  
Compressed Air Advisors, Inc.  
Phone: 877.247.2381  
[info@compressedairadvisors.com](mailto:info@compressedairadvisors.com)  
[www.compressedairadvisors.com](http://www.compressedairadvisors.com)