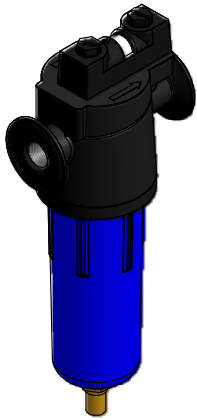
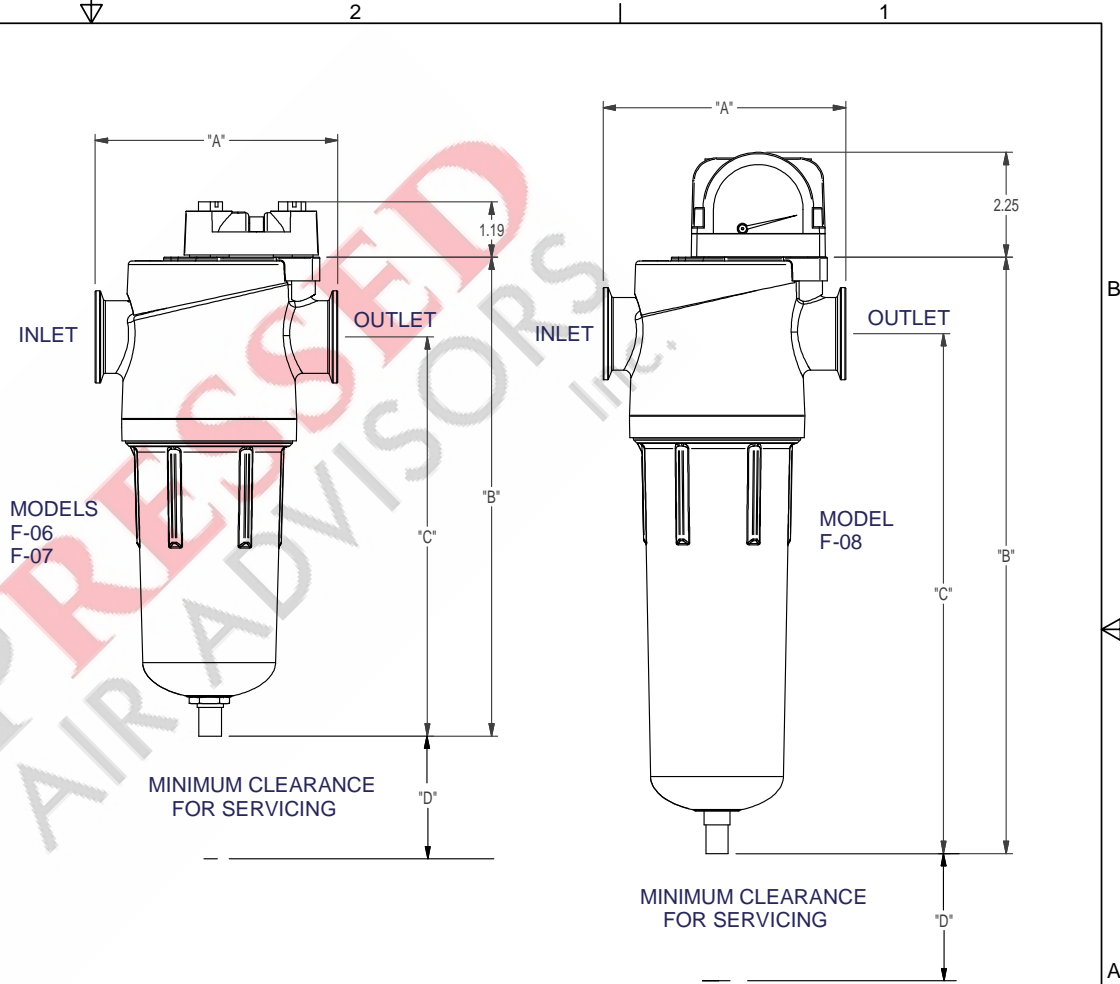


Table			
FILTER TYPE	F-06	F-07	F-08
REPLACEMENT ELEMENT	F(GRADE)-06	F(GRADE)-07	F(GRADE)-08
NOMINAL FLOW	75 (131)	103 (175)	157 (267)
IN/OUT CONN. NPT (BSPT)	3/4	3/4	1
"A" IN. (mm)	5.20 (132)	5.20 (132)	5.20 (132)
"B" IN. (mm)	10.32 (262.1)	10.32 (262.1)	12.84 (326.1)
"C" IN. (mm)	8.65 (219.8)	8.65 (219.8)	11.7 (283.8)
"D" IN. (mm)	5 (127)	5 (127)	5 (127)
WEIGHT lb. (kg.)	3.1 (1.4)	3.1 (1.4)	3.5 (1.6)
MWP psig. (bar)	250 (17.3)	250 (17.3)	250 (17.3)
MOT F (C)	150 (66)	150 (66)	150 (66)
HEAD MATERIAL	ALUMINUM	ALUMINUM	ALUMINUM
BOWL MATERIAL	ALUMINUM	ALUMINUM	ALUMINUM



NOTES:

1. MWP - MAXIMUM WORKING PRESSURE
2. MOT - MAXIMUM OPERATING TEMPERATURE
3. F-06 & F-07 FILTER ASSEMBLY WITH SLIDER AND AUTOMATIC FLOAT DRAIN SHOWN
4. F-08 FLITER ASSEMBLY SHOWN WITH DP GAUGE AND AUTOMATIC FLOAT DRAIN



**COMPRESSED**  
AIR ADVISORS

Inc.

Compressed Air Advisors, Inc.

Phone: 877.247.2381

info@compressedairadvisors.com

www.compressedairadvisors.com

					UNLESS OTHERWISE SPECIFIED DIMENSIONS ARE IN INCHES TOL. ON FRACTIONS: ± TOL. ON DECIMALS: ± (2 PLACE) TOL. ON DECIMALS: ± (3 PLACE) TOL. ON ANGLES: ±	DRAWN BY: JWB DATE: 6/3/2010			
						CHECKED BY: JWB DATE: 6/3/2010			TITLE HANKISON GENERAL ARRANGEMENT F-06 F-07 & F-08
REV.	DESCRIPTION	BY	DATE	APPROVED	THIRD ANGLE PROJECTION	APPROVED BY: JWB DATE: 6/3/2010	SIZE B	DWG. NO. GA23HAN-0027	REV.
REVISION HISTORY (△ INDICATES LATEST REVISION)							SCALE: NONE	EST. WT.:	SHEET 1 OF 1