

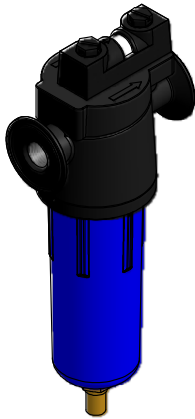
4

3

2

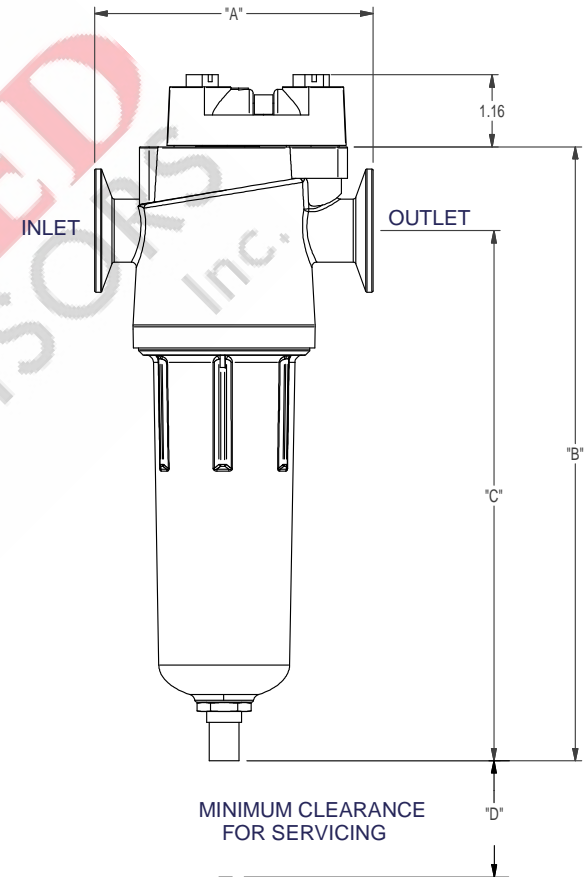
1

Table			
FILTER TYPE	F-02	F-03	F-04
REPLACEMENT ELEMENT	F(GRADE)-02	F(GRADE)-03	F(GRADE)-04
NOMINAL FLOW	20 (34)	35 (60)	50 (85)
IN/OUT CONN. NPT (BSPT)	1/4	3/8	1/2
"A" IN. (mm)	4.47 (113.6)	4.47 (113.6)	4.47 (113.6)
"B" IN. (mm)	8.10 (205.5)	8.10 (205.5)	9.87 (250.5)
"C" IN. (mm)	6.76 (171.8)	6.76 (171.8)	8.52 (216.4)
"D" IN. (mm)	4 (102)	4 (102)	4 (102)
WEIGHT lb. (kg.)	1.8 (0.8)	1.8 (0.8)	1.9 (0.9)
MWP psig. (bar)	250 (17.3)	250 (17.3)	250 (17.3)
MOT F (C)	150 (66)	150 (66)	150 (66)
HEAD MATERIAL	ALUMINUM	ALUMINUM	ALUMINUM
BOWL MATERIAL	ALUMINUM	ALUMINUM	ALUMINUM



NOTES:

1. MWP - MAXIMUM WORKING PRESSURE
2. MOT - MAXIMUM OPERATING TEMPERATURE
3. FILTER ASSEMBLY WITH SLIDER AND AUTOMATIC FLOAT DRAIN SHOWN



COMPRESSED
AIR ADVISORS

Inc.

Compressed Air Advisors, Inc.

Phone: 877.247.2381

info@compressedairadvisors.com

www.compressedairadvisors.com

					UNLESS OTHERWISE SPECIFIED DIMENSIONS ARE IN INCHES TOL. ON FRACTIONS: ±	DRAWN BY: JWB DATE: 6/3/2010			
					TOL. ON DECIMALS: ± (2 PLACE) TOL. ON DECIMALS: ± (3 PLACE) TOL. ON ANGLES: ±	CHECKED BY: JWB DATE: 6/3/2010		TITLE HANKISON GENERAL ARRANGEMENT F-02 F-03 F-04	
REV.	DESCRIPTION	BY	DATE	APPROVED	THIRD ANGLE PROJECTION	APPROVED BY: JWB DATE: 6/3/2010	SIZE B	DWG. NO. GA23HAN-0026	REV.
REVISION HISTORY (△ INDICATES LATEST REVISION)							SCALE: NONE	EST. WT.:	SHEET 1 OF 1

4

3

2

1