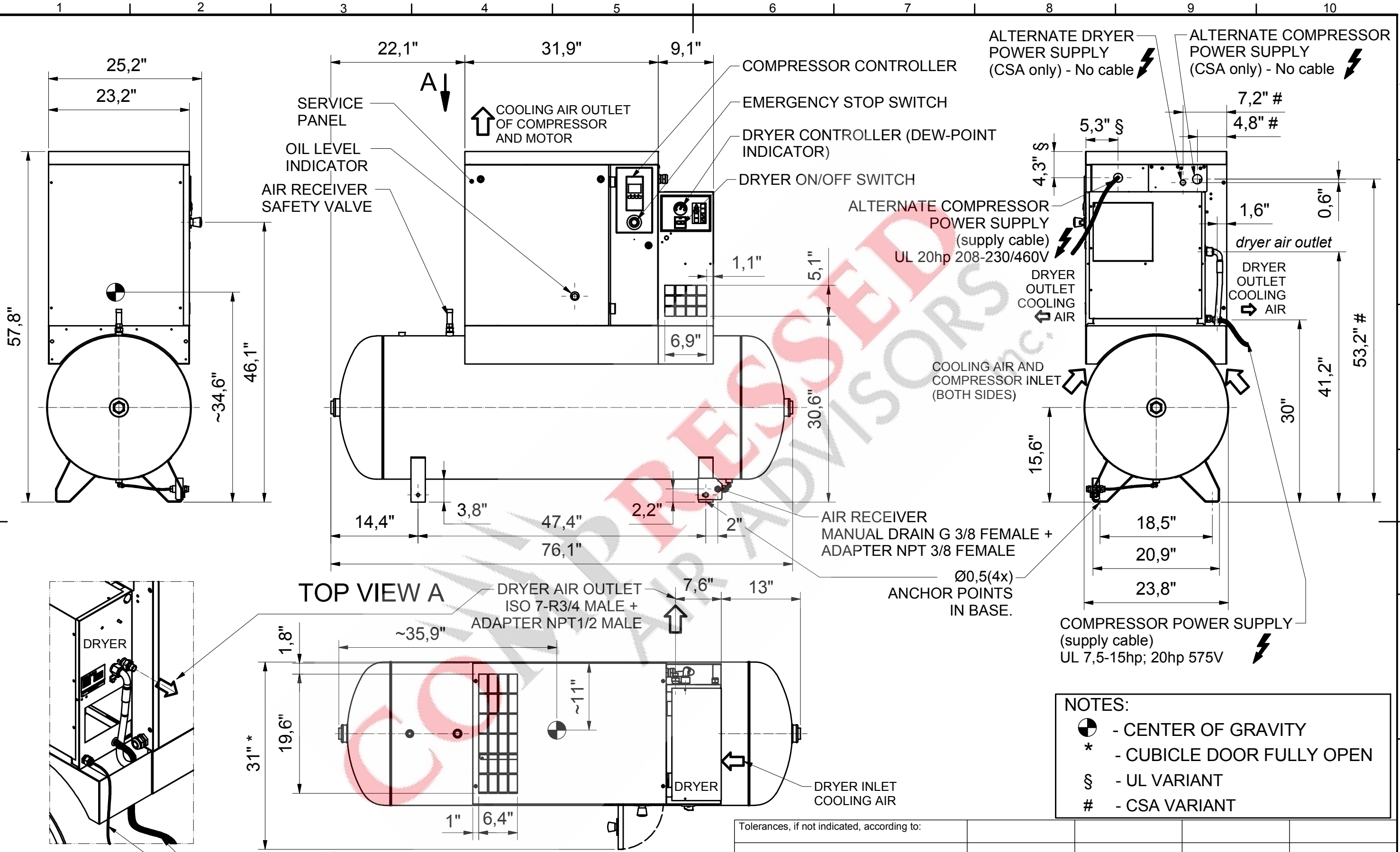


All materials supplied are in compliance with the requirements of the List of Prohibited Substances



TOP VIEW A

- NOTES:**
- ⊙ - CENTER OF GRAVITY
 - * - CUBICLE DOOR FULLY OPEN
 - § - UL VARIANT
 - # - CSA VARIANT

CONFIDENTIAL:
This document is our property and shall not without our permission be altered, copied, used for manufacturing or communicated to any other person or company.

DRYER POWER SUPPLY (supply cable) except CSA
 ⚡
 DRYER DRAIN TUBE Ø0.55"

COMPRESSED AIR ADVISORS Inc.
 Compressed Air Advisors, Inc.
 Phone: 877.247.2381
 info@compressedairadvisors.com
 www.compressedairadvisors.com

Power	Approx. weight
kW (Hp)	±20 (lb)
7,5 (10)	727
11 (15)	760
15 (20)	793

Tolerances, if not indicated, according to:			
Name	DIMENSION DRAWING	C55* MAXI DRYER V. TM	Confidentiality Class acc. to 1102 K
Material	Not applicable	IMPERIAL	Internal
Treatment	Not applicable		INV
Scale	1:15	Family	Compare
Drawn by	sgraser	Blank nr.	Replaces
Drawing format	Blank wt	Kg	Fin. wt.
STATUS	A3		N/A
Des checked.	Prod checked.	Approved.	Date
			01/09/2016
Approved		Designation	
		Sheet 2 / 2	
9828083263			

-00				9828083261	
Ed	Position	Modified from	Date	Intr./Appd.	Parent 3D model
					Ed. Version 3D