



COMPRESSED
AIR ADVISORS ONLINE, INC.

YOUR COMPRESSED AIR PARTNER

877.247.2381

www.CompressedAirAdvisors.com

Compressed AIR FILTERS



COMPRESSED AIR CONTAMINATION

Even in today's high-tech world, compressed air remains the primary power source for industry. Because it has many advantages over other types of energy, an increasing number of applications for compressed air are still being discovered.

Unfortunately, compressed air is subject to contamination from the atmosphere and the compressor itself. This results in corrosion and other related problems, which inevitably lead to system and equipment failure.

THE KELTEC Technolab SOLUTION:

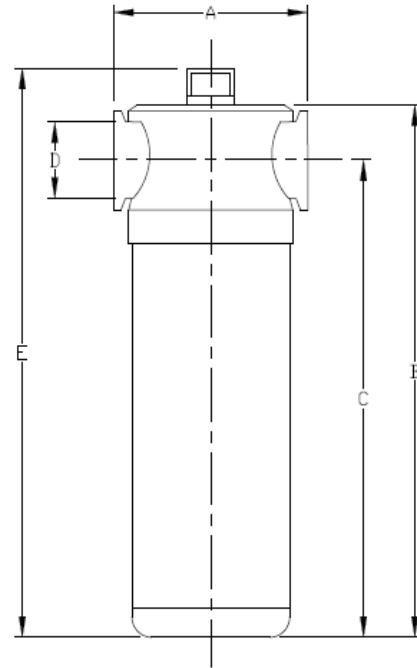
The Ultimate in Compressed Air Filtration

When it comes to keeping compressed air clean and oil-free, no one fits the bill like KELTEC Technolab. KELTEC Technolab's advanced line of coalescing filters for compressed air systems offers a rare blend of exceptional performance, proven reliability and uncommon value.

The KELTEC Technolab compressed air filter product line covers a full range of products to handle virtually any flow rate and operating condition. Our array of high-efficiency coalescers, particulate/general purpose coalescers, and adsorptive carbon filters offers solutions to virtually all compressed air filtration applications.



Compressed AIR FILTERS



ELEMENT SPECIFICATIONS

Grade	P Prefilter	X General Purpose	Y Oil Removal	A Activated Carbon
Filter Efficiency (micron)	5 (micron)	1	.01	.01
Max. Oil Carryover (ppm)	5 (ppm)	.50	.01	.001

PART NUMBER	Connection Size	Flow Rate cfm(M ³ /h)	PSI (BAR)	Element (P/X/Y/A)	Housing Dimensions								
					A INCHES / MM	B INCHES / MM	C INCHES / MM	D INCHES	E INCHES / MM				
CAH-0058-BSP/NPT	1/2"	58(100)	290(20)	KP0058	4.00	102	10.12	257.5	9.28	235.5	1/2"	11.98	304.5
CAH-0088-BSP/NPT	3/4"	88(150)	290(20)	KP0088	4.84	123	11.91	302.5	10.84	275.5	3/4"	13.75	349.5
CAH-0117-BSP/NPT	3/4"	117(200)	290(20)	KP0117	4.84	123	14.44	366.5	13.38	339.5	3/4"	16.28	413.5
CAH-0147-BSP/NPT	1"	147(250)	290(20)	KP0147	4.84	123	16.00	406.5	14.94	379.5	1"	17.86	453.5
CAH-0353-BSP/NPT	1 1/2"	353(600)	290(20)	KP0353	4.84	123	21.18	538	19.75	502.5	1-1/2"	23.03	585
CAH-0500-BSP/NPT	2"	500(851)	290(20)	KP0500	6.30	160	24.62	625.5	23.00	584	2"	26.48	672.5
CAH-0712-BSP/NPT	2"	710(1210)	290(20)	KP0712	6.30	160	27.38	695.5	25.75	654	2"	29.25	742.5
CAH-0930-BSP/NPT	2 1/2"	930(1550)	232(16)	KP0930	7.64	194	28.75	730	26.46	672	2-1/2"	30.62	777
CAH-1140-BSP/NPT	3"	1140(1900)	232(16)	KP1140	7.64	194	34.25	869.5	31.98	812.5	3"	36.08	916.5
CAH-1380-BSP/NPT	3"	1380(2300)	232(16)	KP1380	7.64	194	36.38	924	34.12	867	3"	38.25	971

NOTE: CAH-0930 REPLACES CAH-0888 • CAH-1140 REPLACES CAH-1065 • CAH-1380 REPLACES CAH-1300
 MAXIMUM OPERATING PRESSURE 255 PSI/16BAR
 MAXIMUM OPERATING TEMPERATURE 176F/80C

Housings can be fitted together with the use of Fixing clamps.



Clamp Numbers	Housings
CAH-CL050	CAH-0058
CAH-CL075-125	CAH-0088
	CAH-0117
	CAH-0147
CAH-CL150	CAH-0353
CAH-CL200	CAH-0500
	CAH-0712
CAH-CL250-300	CAH-0930
	CAH-1140
	CAH-1380



3 Drain Options

CAH-ED(NPT or BSP)-ASSY

Heavy duty external drain that can be easily attached to the CAH-BHF050F Bulkhead Fitting (shown) and housing.



1



2

#CAH-ADMD

Auto/manual drain
(included standard with
every housing)

SDV115V-25AN and SDV220V-50AN

Solenoid operated electronic drain valves come COMPLETE WITH STRAINER AND BALL VALVE that can be easily attached to the CAH-BHF050F Bulkhead Fitting (shown) and housing.



3

1/4" ID and 1/2" OD DUAL THREADS
USED ON SDV ELECTRONIC DRAINS