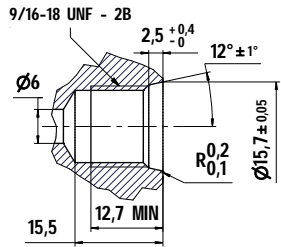
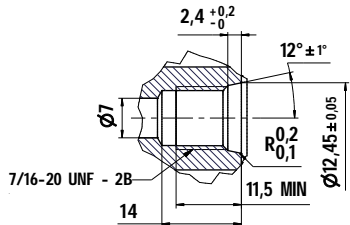


### HIGH PRESSURE CONNECTIONS



### PIPE-AWAY CONNECTIONS



6 9 1 A 1 1 3 B 3 6 3

6 9 1 A Family valve: LYRA V1-CV

1 Container thread: 1" 1/8 - 12 UNF - 2A

3 Integrated Check Valve: NONE

3 HP Female tube fittings: 9/16"-18 UNF-2B [Shape ANSI/SAE J1926]

B Coil: 12V AMP Connector (+ Cable)

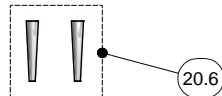
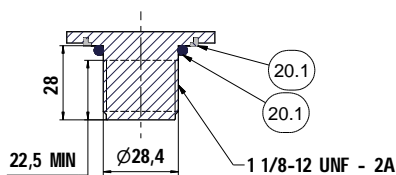
3 Laser etching: YES (DEDICATED ANSI/AGA NGV3.1)  
Instruction sheet - YES (standard)

6 Safety system: TPRD + EXCESS FLOW

3 CONVOY Female tube fittings: 7/16"-20 UNF-2B [Shape ANSI/SAE J1926]

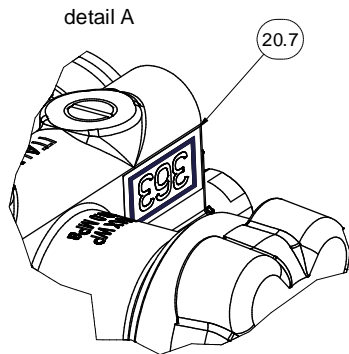
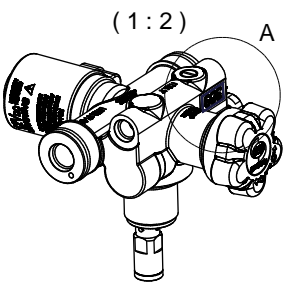
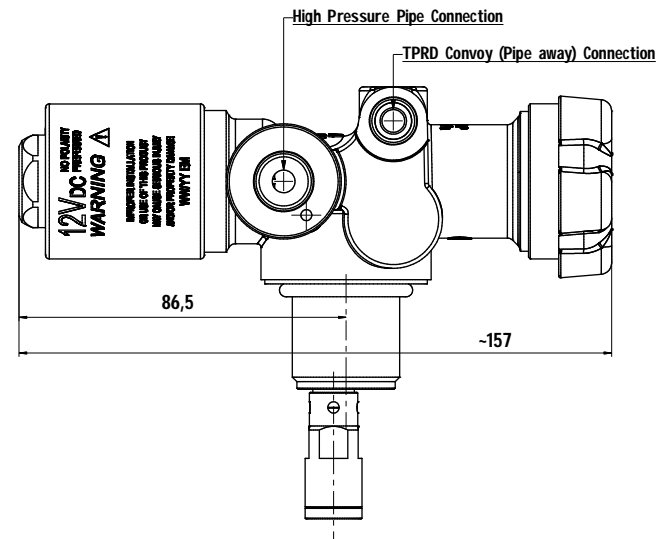
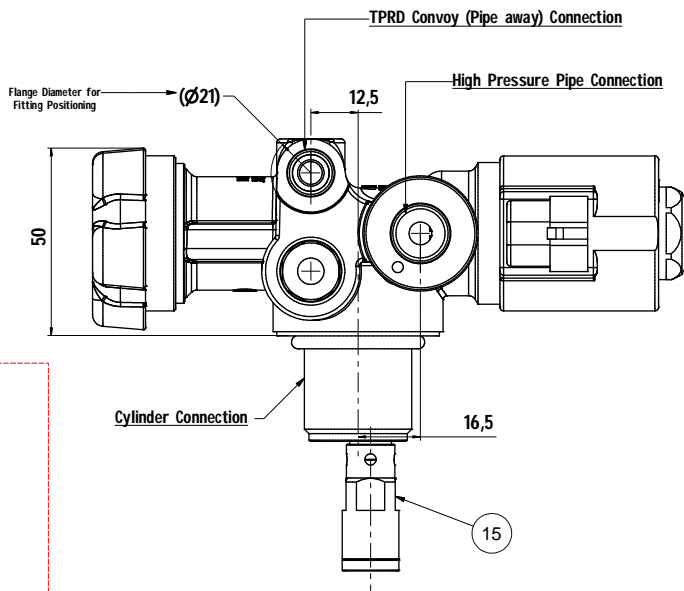
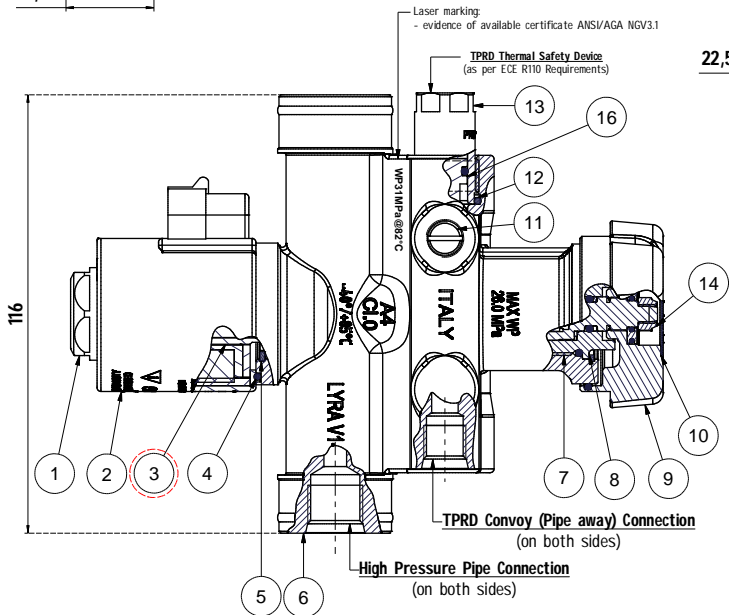
According to next sheet

### TANK CONNECTION



Pos.	Description	Q.ty	Code
1	Vented Coil Nut	1	693.00.775
2	Coil 12V (10W) AMP Connections	1	693.06.791E
3	Solenoid valve	1	691.04.636
4	O-Ring 31.47x1.78	1	691.06.735
5	Seeger D24 DIN-472	1	693.06.757
6	Valve Body (Nikel Coated)	1	691.11.505
7	Preassembled Manual Group	1	694.12.293F
8	Seeger D24 - SP I 24	1	693.06.002
9	MANUAL HANDWHEEL ASSEMBLY	1	69504502
10	OMB LogoType	1	693.06.216
11	M10 Cap	1	694.12.773
12	Venting O-Ring 15.6x1.78	1	691.06.121
13	TPRD Thermal Safety Device (LEAD FREE)	1	691.04.405
14	SELF-LOCKING NUT M5x0.8	1	694.06.985
15	EXCESS FLOW HD6 (Heavy Duty Ø6mm)	1	691.00.908
16	TPRD Piston	1	696.04.823

20.1	Stem Accessories (O-RING & Venting Gasket)	1pcs	693.88.129F
20.2	Cable (6m) with AMP Connector	1pcs	675.06.240
20.3	Instruction sheet	1pcs	88888.251
20.4	9/16" Threaded Protection Cap	2pcs	88888.288
20.5	7/16" Threaded Protection Cap	2pcs	88888.290
20.6	Conical pins kit (for the internal venting system)	1pcs	693.88.820
20.7	Adhesive label 24x12mm	1pcs	88888.718



Label for identification of the type of excess flow limiter ("363" = Excess flow limiter Heavy Duty Ø6mm)

DETAILED MARKING DRAWING next sheet

REVISION		DESCRIPTION	DATE	CONTROL BY	TREATMENT	WEIGHT
05	RDM17-120 - Replaced solenoid 691.04.747 with 691.04.636		27/03/2017	N.D.	L.A.	2.2 kg

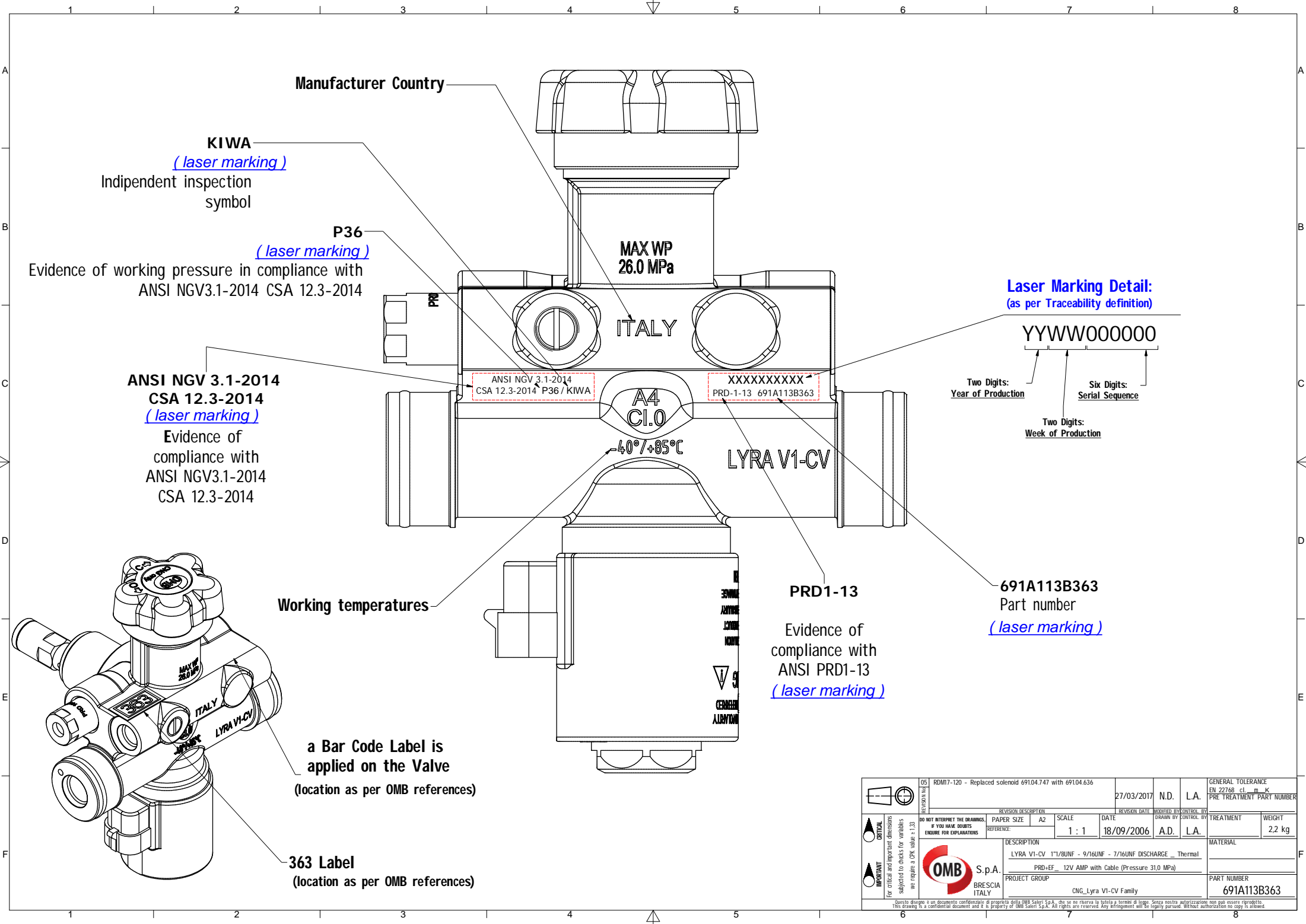
  

DESCRIPTION	SCALE	DATE	CONTROL BY	TREATMENT	WEIGHT
LYRA V1-CV 1" 1/8 UNF - 9/16 UNF - 7/16 UNF DISCHARGE ... Thermal	1 : 1	18/09/2006	A.D.	L.A.	2.2 kg

DESCRIPTION	PROJECT GROUP	PART NUMBER
PRD+EF_ 12V AMP with Cable (Pressure 31.0 MPa)	CNG_Lyra V1-CV Family	691A113B363

Questo disegno è un documento confidenziale di proprietà della OMB Saveri S.p.A., che se ne riserva la tutela a termini di legge, senza nostra autorizzazione non può essere riprodotto. This drawing is a confidential document and it is property of OMB Saveri S.p.A. All rights are reserved. Any infringement will be legally pursued. Without authorization no copy is allowed.



Manufacturer Country

**KIWA**  
*(laser marking)*

Independent inspection symbol

**P36**

*(laser marking)*

Evidence of working pressure in compliance with ANSI NGV3.1-2014 CSA 12.3-2014

**ANSI NGV 3.1-2014  
CSA 12.3-2014**

*(laser marking)*

Evidence of compliance with ANSI NGV3.1-2014 CSA 12.3-2014

Working temperatures

a Bar Code Label is applied on the Valve

(location as per OMB references)

**363 Label**

(location as per OMB references)

MAX WP  
26.0 MPa

ITALY

ANSI NGV 3.1-2014  
CSA 12.3-2014 P36 / KIWA

A4  
Cl.0

-40°/+85°C

LYRA V1-CV

PRD1-13

Evidence of compliance with ANSI PRD1-13  
*(laser marking)*

**Laser Marking Detail:**  
(as per Traceability definition)

YYWW000000

Two Digits:  
Year of Production

Six Digits:  
Serial Sequence

Two Digits:  
Week of Production

**691A113B363**  
Part number  
*(laser marking)*

	05	RDM7-120 - Replaced solenoid 691.04.747 with 691.04.636	27/03/2017	N.D.	L.A.	GENERAL TOLERANCE EN 22768 cl. m_K
	REVISION DESCRIPTION		REVISION DATE	INSURED BY CONTROL BY		PRE TREATMENT PART NUMBER
	DO NOT INTERPRET THE DIMENSIONS IF YOU HAVE DOUBTS ENSURE FOR EXPLANATIONS		PAPER SIZE: A2	SCALE: 1 : 1	DATE: 18/09/2006	TREATMENT
	we require a Cpk value ≥ 1.33		REFERENCE:	DATE: 18/09/2006	A.D.	L.A.
	DESCRIPTION		PROJECT GROUP		MATERIAL	
	LYRA V1-CV 1"1/8UNF - 9/16UNF - 7/16UNF DISCHARGE _ Thermal		BRESCIA ITALY		PART NUMBER	
PRD+EF_ 12V AMP with Cable (Pressure: 31.0 MPa)		CNC_Lyra V1-CV Family		691A113B363		

Questo disegno è un documento confidenziale di proprietà della OMB S.p.A. che si riserva la tutela a termini di legge. Senza nostra autorizzazione non può essere riprodotto. This drawing is a confidential document and it is property of OMB S.p.A. All rights are reserved. Any infringement will be legally pursued. Without authorization no copy is allowed.