

6 9 E 1 1 3 A 2 1 2

6 9 E Family valve: ESA

1 Container thread: 1" 1/8-12 UNF

1 Integrated Check Valve: **NOT Present**

3 Female tube fittings: 9/16"-18 UNF-2B seat: ANSI/SAE J1926

A Coil: 12V AMP SSEAL Connector (Cable not present)

2 Inscription week/year - YES (NGV3.1/PRD-1)

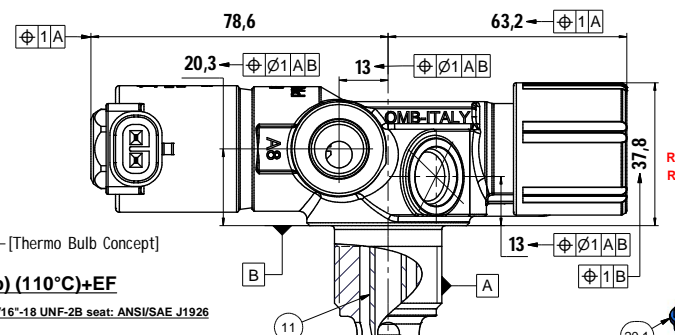
Packaging Definition - **Single BOX**

1 TPRD / Excess Flow: **Convoy TPRD DX (bulb) (110°C)+EF**

2 Burst disk / Live Port: **No BD, Live Port: 9/16"-18 UNF-2B seat: ANSI/SAE J1926**

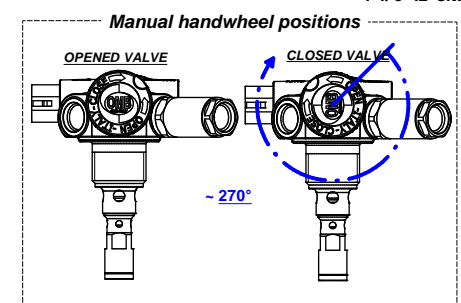
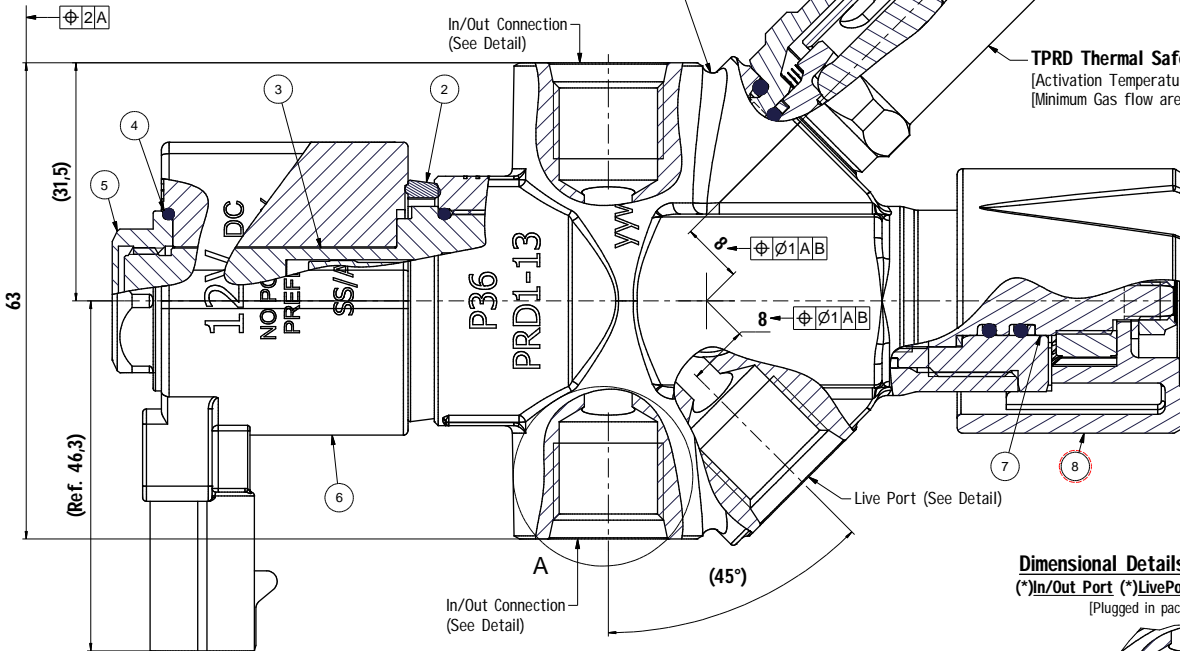
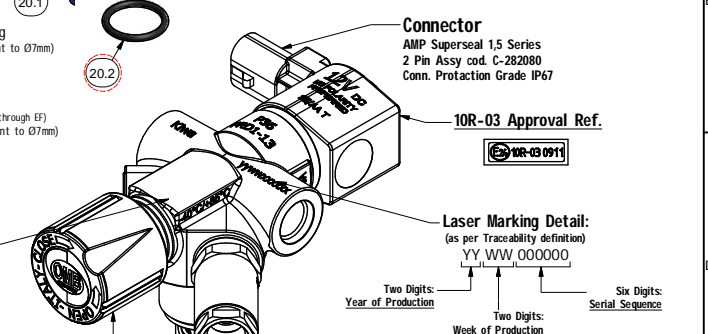


**NGV 3.1 / PRD-1  
Homologation Path  
UNDER PROCESS**

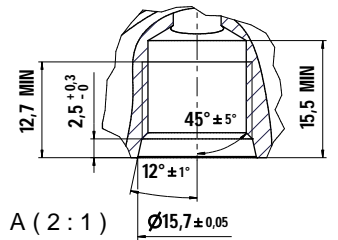


Part LIST			
POS	DESCRIZIONE	QTÀ	CODICE
1	Body valve ESA 1"1/8 9/16 TPRD BULB LIVE PORT	1	691.01.421
2	Protective gasket	1	691.06.788
3	Preassembled solenoid group ESA	1	691.04.431
4	O-Ring 21,5x1.50	1	699.06.151
5	Coil Nut	1	699.12.136
6	Coil Ø14 12V(13W) Con. AMP SuperSeal_black 10R-03	1	691.06.445
7	Preassembled manual group ESA	1	691.04.426
8	Handwheel components	1	691.00.447
9	Adhesive logotype	1	693.06.245
10	TPRD thermal safety device bulb 110°C -ESA- (Convoyed version)	1	691.04.438
11	Internal pipe group	1	691.04.441
12	Excess Flow Device (Heavy Duty 7mm)	1	691.04.976

Accessories			
POS	DESCRIZIONE	QTÀ	CODICE
20.1	Threaded protection cap 9/16	4	88888288
20.2	Stem accessories (O-ring 28.17x3.53 into a bag)	1	693.88126V



**Dimensional Details for Connections**  
(\*In/Out Port) (\*LivePort) (\*TPRD Pipe-Away)  
(Plugged in packaging by using Item 20.1)



**\*\*\* WARNING \*\*\***  
Valve designed for being installed **OUTSIDE** the passenger compartment **ONLY**

**Operation Conditions**

Temperature Range [°C]	-40°F / +185°F
Max Working Pressure [bar]	26 MPa
Application Fuel	CNG

PER LE QUOTE CRITICHE ED IMPORTANTI SOGGETTE A CONTROLLO PER VARIABILI SI RICHIEDE Cpk ≥ 1,33									
INDICAZIONE		DESCRIZIONE MODIFICA		DATA	FIRMA	CONTR.	TOLLERANZE GENERALI		
01		RDM15-131: new handwheel components 69100447, new logo 69306245, STEM Or in accessories bag, design updated		23/04/15	G.M.	L.A.	UNI EN 22768 cl. m K		
CRITICO		FORMATO FOLIO A2		DATA	DISEGN.	CONTR.	CODICE PRIMA DEL TRATTAMENTO		
RIPRODUZIONE E/O DIFFUSIONE VIETATA A TERMINI DI LEGGE		SCALA 1:1		10/06/2014	G.M.	L.A.	TRATTAMENTO MASSA kg		
IMPORANTE		DENOMINAZIONE Automatic Cylinder Valve_ESA_1" 1/8_9/16" 18 UNF Conn_TPRD(Bulb)+EF+Live Port		GRUPPO		MATERIALE		CODICE DISEGNO	
OMB S.p.A. BRESCIA ITALY		CNG ESA						69E113A212	