

Elenco parti			
Pos.	Description	Q.ty	Code
1	PLUG (Blind Cap) _ (V)	1	696.04.887V
2	Valve body (increased orifice)	1	696.14.843
3	Manual Tap Group _ (V)	1	693.04.250V
4	Tightness plunger	1	695.04.515
5	Seeger D24 - SP I 24	1	695.66.002
6	Metallic handwheel	1	693.11.204
7	Seeger UNI 7435 - 8	1	693.06.210
8	OMB LogoType (Adhesive)	1	693.06.216

*** Accessories ***

20.1	Stem O-Ring V (inside a bag)	1	693.88.126V
20.2	Stem protection cap	1	691.06.003
20.3	Instructions	1	88888.252
20.4	Threaded protection caps	4	88888.288

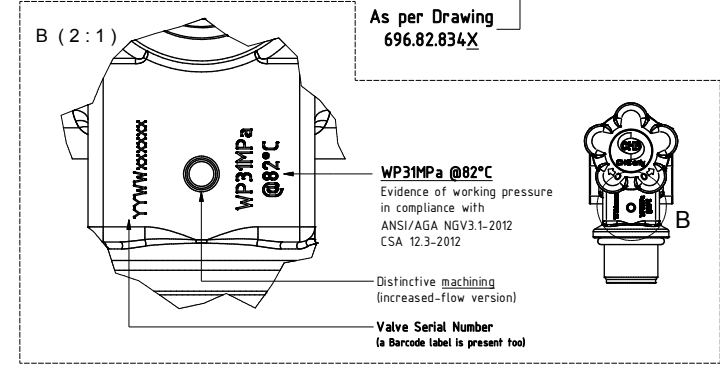
FILL/DEFUELING ORIFICE = $\varnothing 7\text{mm}$
 BLOWDOWN ORIFICE = $\varnothing 8\text{mm}$

H Special features: **INCREASED FLOW**
T Blowdown line/connection: **DOUBLE PORTS**

6 9 6 U U L X V A T H

6 9 6 Family valve: **BETA NEW**
U Container thread: **1"1/8 - 12UNF -2A**
U Female tube fittings: **9/16" - 18UNF -2B**
L External connection: **SMOOTH**
X Safety system: **NOT Devices Applied**
V O-ring type: **GLT-ED**
A Inscription week/year - **YES** (Dedicated)
 Packing in single box - **YES**
 Instruction paper - **YES**

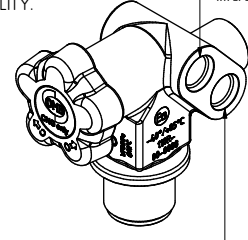
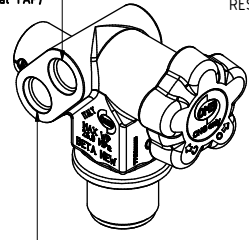
Laser Markings detail



IMPORTANT REMARK FOR THE CUSTOMER:
 THE ABSENCE OF THE TPRD INVOLVES THE DECADENCE OF THE ECE-R110 APPROVAL. IN ADD, IT IS ALSO HIGHLIGHTED THAT THE CURRENT VALVE DESIGN HAS NOT ANY APPLIED DEVICES FOR THE FIRE PROTECTION. THIS ASPECT WILL REMAIN UNDER THE SYSTEM CONSTRUCTOR RESPONSABILITY.

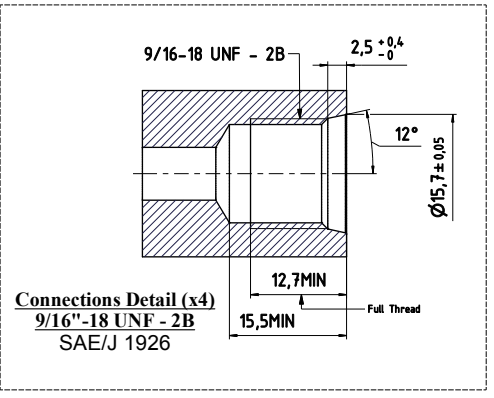
FUEL PORT
 (Filling/ Defueling Path, intercepted by Manual TAP)

FUEL PORT
 (Filling/ Defueling Path, intercepted by Manual TAP)



LIVE PORT
 (Blowdown Port, directly in connection with Tank Pressure)

LIVE PORT
 (Blowdown Port, directly in connection with Tank Pressure)



PER LE QUOTE CRITICHE ED IMPORTANTI SOGGETTE A CONTROLLO PER VARIABILI SI RICHIEDE Cpk ≥ 1.33

INDIPENDENTE	CRITICO	NON INTERPRETARE I DISEGNI SE AVETE DUBBI CHIEDETE	FORMATO FOLIO	A2	SCALA	1:5.1	DATA	29/07/2013	DISEGN	T.G.	CONTR	L.A.	TOLLERANZE GENERALI UNI EN 22768 cl. m K CODICE PRIMA DEL TRATTAMENTO
DENOMINAZIONE												MATERIALE	
Manual Valve "BETA NEW" - 1"1/8UNF - 9/16"UNF (x4) - NO Safety Devices - (Increased-Flow Type)_ (V)													
GRUPPO												CODICE DISEGNO	
CNG_Manual Cylinder Valve "Beta New"												696UULXVATH	

