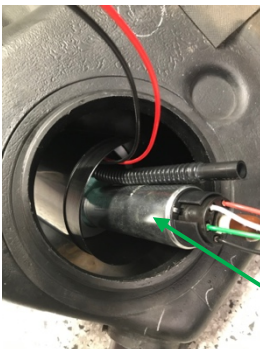


NISSAN PULSAR/SUNNY GTiR FPG In-tank Surge Tank Kit Installation Instructions:



Step 1: Slide lower section (the unit with the lift pump on it) into the fuel tank, rotate the assembly to allow it to find its way in. This method is for the Walbro 255 and 460/525 pumps. **For the longer BKS1000 pump, read additional step below**.

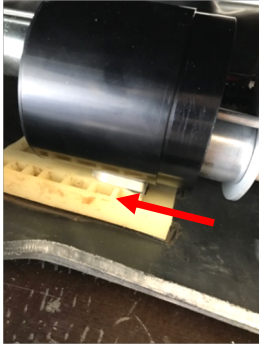


Step 1.1: Slide lower section into the fuel tank (the unit with the lift pump on it) without the pump retaining plate on and allow the pump to be loose and moveable, rotate the assembly to allow it to find its way in. Push the pump back into position, install the retaining plate (ensure that the wires and hoses are fed through the holes as per the picture) and tighten the bolts (they only need to be firm, do not overtighten as it will bend the plates).

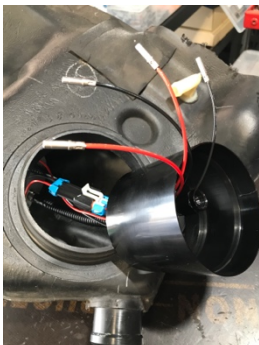




Step 2: Engage the foot of the surge tank into the factory plastic holder. Do not push it all the way at this stage.



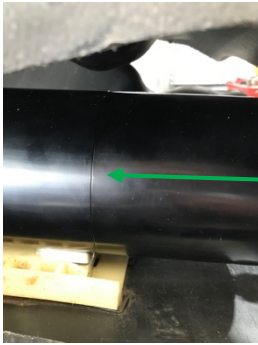
Note: This is what it looks like inside, only engage the foot 20mm or so.



Step 3: Install the middle section of the surge tank, ensure the wires and the hoses are placed through the centre, then connect the middle section to the lower section. Some rotating and wiggling may be required as they can be a tight fit.



Note: This is what it will look like inside.



Step 4: Push the middle section on the lower section all the way.



Step 5: Push the assembly all the way into the factory plastic holder. Make sure it goes in straight, it's can be a tight fit.



Step 6: Prepare the wiring and the hoses for the next section, make sure they are not twisted or jammed.



Step 7: Install the last section of the surge tank, feed the wires through the smallest hole (you need to feed them one at a time), the hose through the 21mm hole, and lower the last section into the tank.



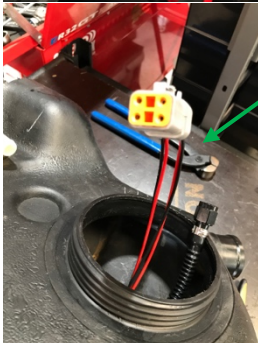
Step 8: Engage the last section onto the middle section, some rotating and wiggling may be required. Make sure nothing gets caught. The threaded rod should be placed towards the tank floor and the wires at the top as pictured.



Note: This is what it will look like inside.

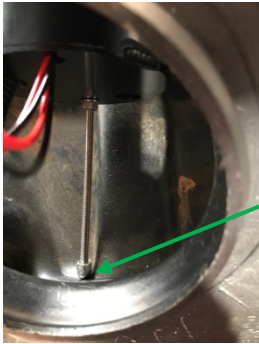


Step 9: Install the wires into the 4 pin Deutsch plug supplied. The seal has been removed on purpose as it does not handle fuel.
IMPORTANT: Pin 1 and Pin 4 are Positives
Pin 2 and Pin 3 are Negatives. Ensure that wires are positioned correctly.

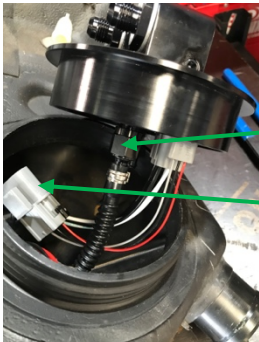




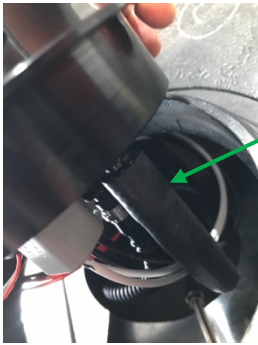
Step 10: Wind threaded rod out by hand, all the way until it touches the tank wall and as tight as you can with your fingers. Wiggle the surge tank and check rod tension. This will ensure that there is minimal movement inside the tank. Tighten the nut with a 10mm spanner to secure the rod in place.



Note: This is what it will look like inside. Rod should be in the recess.



Step 11: Connect the pump supply hose to the underside of the hat and tighten with 11/16" spanner or AN6 spanner (make sure that the hat is facing the correct way before tightening the fitting), connect the factory fuel sender and connect the 4 pin Deutsch plug in the tank.



Step 12: Insert the 3/8" rubber hose supplied in the kit to the remaining hole in the surge tank, and connect the other end to the barb fitting on the underside of the hat. Spraying a little bit of wd40 or equivalent will help the hose slide into the surge tank hole. Install the factory rubber seal around the hat and lower the hat into position



Step 13: Install hat into position and tighten lock ring.