



LI PIGMENTS



A pioneering,
specialist eyebrow
pigment PMU line
like no other.



BROW CODE X LI PIGMENTS

OUR STORY

Introducing a revolutionary Permanent Brow Makeup (PMU) Line, exclusively developed by Brow Code and Li Pigments. The Brow Code Li Pigments Line comes from the perfect alignment between two globally recognized brow industry pioneers and experts.

With Li Pigment's extensive experience in permanent make-up and Melanie Marris' notable expertise in the brow world, this collaboration presents a pioneering specialist eyebrow pigments PMU line like no other.



CUTTING EDGE COLOUR.

Cutting-edge Colour theory

The Brow Code Li formulations and microblading pens have been tried, tested and refined by leaders in microblading across the globe!

The Brow Code Li PMU Line features 10 shades designed specifically for the brows. Through the pigment's water base and unique formulation, the organic & inorganic colours cling to the needle, making it perfect for every procedure method (manual or machine). This luxury pigment line delivers flawless application, amazing pigment retention, and long-lasting results.



browcode.com



INNOVATIVE
FORMULA
— 10 —
PIGMENT
SHADES



PIGMENT NAME	PIGMENT TYPE	FORMULATION	FP	TEMP	BASE COLOUR
Bronze	Eyebrow	Organic + Inorganic	I – IV	Slightly Warm	More neutral yellow with a small amount of warmth
Harvest Brown	Eyebrow	Organic + Inorganic	I – IV	Slightly Warm	More neutral yellow with a small amount of warmth
Spiced Rum	Eyebrow	Organic + Inorganic	I – VI	Medium Warm	Warm yellow with a small amount of warmth
Light Walnut	Eyebrow	Organic + Inorganic	II – IV	More Neutral	More neutral yellow with a small amount of warmth
Baby Blonde	Eyebrow	Organic + Inorganic	I – III	Slightly Cool	Warm yellow and green
Perfecto Brown	Eyebrow	Organic + Inorganic	II – IV	Slightly Cool	Green and cool yellow
Beach Blonde	Eyebrow	Organic + Inorganic	I – III	Slightly Cool	More neutral yellow and green
Toasted Taupe	Eyebrow	Organic + Inorganic	I – III	Medium Cool	Green and cool yellow
Brooklyn Brown	Eyebrow	Organic + Inorganic	IV – VI	Very Cool	Black / brown
Dark Roast	Eyebrow	Organic + Inorganic	IV – VI	Very Cool	Black / brown

Each pigment includes a Pigment Colour Guide for simple colour selection.



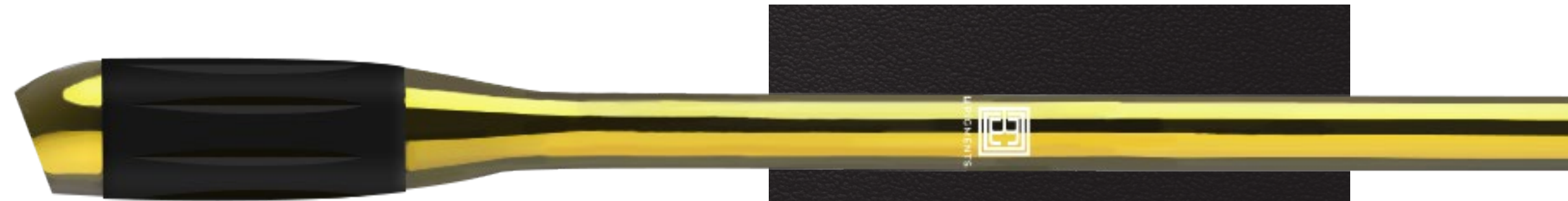
browcode.com

WHAT YOU'LL LOVE

about Brow Code Li Pigments

- Vegan
- Non-Greasy
- Silicone Free
- Fragrance-Free
- Paraben-Free
- Highly Concentrated
- Lasting Colour
- Fade Resistant
- Fortified Neutralisers
- No Splatter or Pooling





Microblading Pens

These disposable Microblading tools have been designed, tested and refined specifically for flawless Brow PMU.

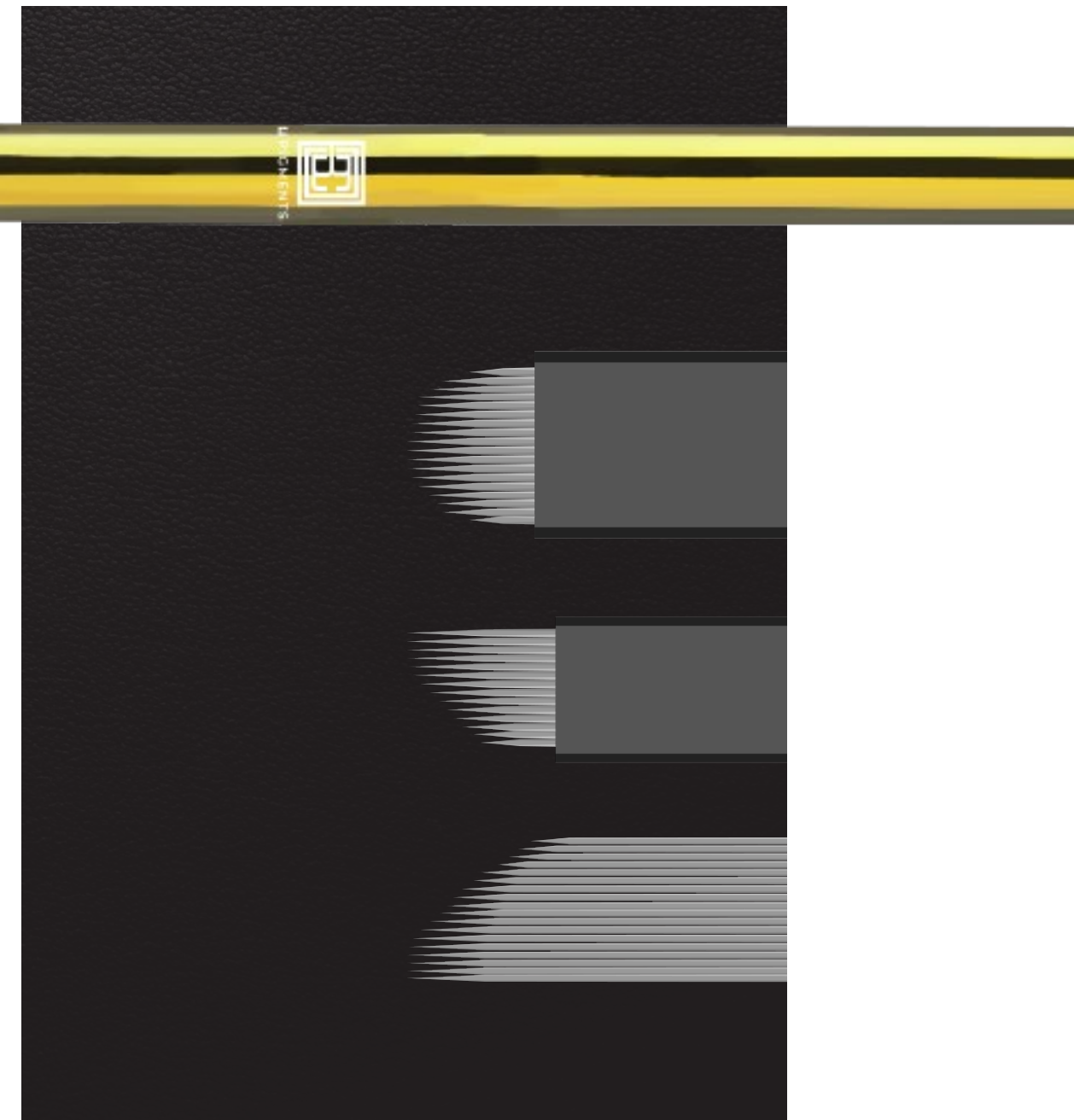
The Microblading Pens have been created with ease, simplicity, and efficiency in mind. By using a disposable microblading tool, you won't have to worry about cleaning or sterilisation, which will save time for you!

Each sharp microblade is fixed into the pen at the perfect angle to prevent the needles from falling off during operation and to achieve ideal pigment implantation and retention.

Each hand tool is made of high-quality medical stainless steel and can be used with microblading pigments and with regular PMU pigments. The tool also features an anti-slip grip!

Every disposable pen is EO Gas sterilized, with a specific lot number and expiration date stamped on each individual package. A sterilisation certificate will be delivered with each batch of needles.

They come in a pack of 10 disposable microblading pens. For single and professional use only.





1 **18U.018** | Angled 20° 18 MM U Shape *#18 Blade*

- U shape needle, with 18 pins which represent a needle size for all brow shapes, from thin to thick eyebrows.
- Lining needle type.
- Lightly angled to help you see your work better during the procedure.
- Diameter of needles 0.18mm, which is thin and helps the technician with sharpness. No heavy hand power is needed.
- To be used to create fine and delicate hair strokes.
- Could be used with a sliding hand motion or back and forth.
- Eyebrows use only.

3 **17C.016 (14C.018)** | Angled 20° 18 MM *Smaller Blade Hole Curve #14 Blade*

- Curved shape needle, with 14 pins which represent a needle size for thicker brow shapes.
- Lining Needle type.
- Technician can use the full 14 pins in full contact with the skin or just the third front part of the pins for thinner brows or little details.
- Lightly angled to help you see your work better during the procedure.
- Diameter of needles 0,18 mm, which is thin and helps the technician with sharpness. No heavy hand power is needed.
- To be used to create fine and delicate hair strokes.
- To be used with a sliding or tapping hand motion, but no back and forth movement.
- Eyebrows, Scalp, Eyeliner use.

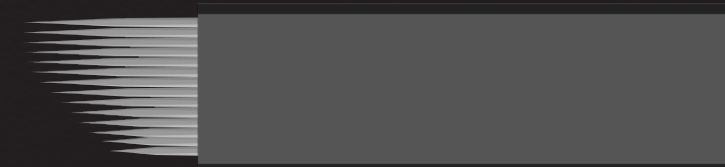
2 **17SH.3R** | Angled 20° 0.30 MM Three *Rows #17 Shading Blade*

- Shading Needle type, with 3 rows of 17 needles, attached all together at the base.
- Needles are attached from tighter to wider from a side to another.
- Technician can use the full 17 pins in full contact with the skin or just the third front part of the pins or the last third part of the needle for different shading effects or saturation effects
- The central part, and when all needles are in contact with the skin, will give a regular shading effect.
- The wider third front part will help with larger areas, and give more pixelated effect (less saturation) as the needles are more appart of each other.
- The use of the third end tighter side will help with thinner part of the eyebrows like the tail, and will give more saturated color as the needles are closer to each other.
- To add saturation, just gently layer color in until desired saturation obtained.
- Tapping movement only.
- Lightly angled to help you see your work better during the procedure.
- Excellent sharpness of the needles. No heavy hand power is needed.
- To be used to create shaded eyebrow from very soft pixel brows to full bold eyebrows.
- Eyebrows, Breast, Scar Camouflage.

1



2



3





A pioneering, specialist
eyebrow pigment PMU
line *like no other.*

