



MACHINE BROW SHADING COURSE

Student Course Overview

store@HalcyonCosmetic.com

www.HalcyonCosmeticStore.com

  @LiPigmentsCanada

MACHINE BROW SHADING

COURSE OVERVIEW

Course Name | Machine Brow Shading

Trainer | Stephanie Wilson

COURSE OVERVIEW | 2 Days or 16hours

Number of sessions | 4

This Machine Brow Shading course is a continued education program for PMU or Microblading artists who have completed a fundamentals training.

*This course is approved for 16 SPCP CEU's

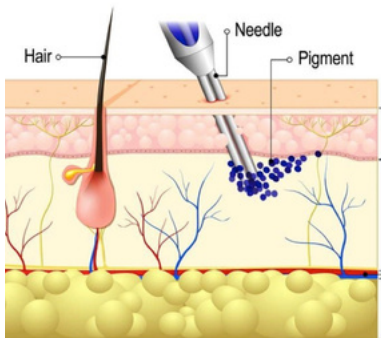
The course is designed to cater to microbladers choosing to upgrade to machine shading and/ or existing PMU artists wanting to learn different shading techniques. Students will gain a better understanding of available machine types, needle configurations & their uses and pigment composition. The course covers 4 different techniques for machine brow shading plus patterns for Ombre' brow shading and different methods to achieve these.

Pre-requisites include:

- Fundamentals Training in either PMU for Eyebrows or Microblading.
- Students should have prior knowledge of; brow mapping, control pain management, sterilization & sanitation, basic colour theory, client consultation & contra-indications for brow PMU/microblading procedures.
- Current Bloodborne Pathogens certification



MACHINE BROW SHADING COURSE OVERVIEW



WHAT YOU WILL LEARN

Learning Outcomes

1. Knowledge of PMU machine and Needle configurations.
 - Understanding machine types
 - Understanding needle types & packaging
 - Correct needle choices for technique and outcome.
2. Knowledge of machine handling and correct depth for brow shading techniques.
 - Correct angle and positioning of the machine for different techniques.
 - Correct depth for colour retention.
3. Knowledge & Practice of shading patterns and different ways to achieve them.
(Full shade | Ombre' | Hybrid)
4. Knowledge & Practice of different shading techniques.
(Traditional Shade | Pointillism | Nano/Whip shading)
5. Basic knowledge of skin anatomy & pigment composition
(Organic v Inorganic | Carbon | Titanium)

MACHINE BROW SHADING

COURSE OVERVIEW

TRAINING REQUIREMENTS

The training for this course will consist of theory and practical sessions.
4 sessions in total. Each student will complete 2 hands-on procedures.
Students will be required to attend all 4 sessions.

Session 1. Theory

Session 2. Practice skin work

Session 3. Work on live models

Session 4. Live Model & Assessment

ASSESSMENT INFORMATION

How will students be assessed?

Students will be required to complete 1 service with the trainer assessor observing. This will take place during session 4.

What will students be assessed on?

Assessment will be based on "Machine Brow Shading Assessment for Competency".

This is provided to students in this package & at the beginning of the course.

Students will have an opportunity to read the assessment requirements prior to assessment.

What else students need to know?

Students must read & sign the "Machine Brow Shading Assessment for Competency" prior to assessment.

Students will also be required to complete a "Course Evaluation" & email to Info@halcyoncosmetic.com once the class is completed & prior to receiving their certificate.

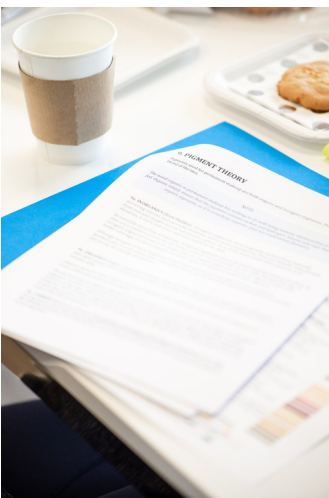
MACHINE BROW SHADING CURRICULUM OVERVIEW



1. Devices
 - Types of machines for PMU
 - Set up and functions of the machine
2. Needles
 - Diameters & Configurations
 - Taper - why does it matter?
 - Understanding needle packaging
 - Choosing the right needle for technique



3. Brow Shading Terms
 - Mapping 'ombre patterns
4. Shading Techniques
 - Traditional
 - Pointillism
 - Nano/Whip or pixelated
5. Machine Handling
 - Angle
 - Positioning
 - Speed



6. The skin
 - Understanding the basic physiology
 - The difference with aging skin and PMU
7. Depth for Pigment
 - Correct depth for skin type
 - How does depth affect the outcome
8. Basic Colour Knowledge
 - Cool v Warm
 - How the colour heals in the skin (Microblading v Shading)
9. Pigment Theory
 - Organics v Inorganics / Pros and Cons
 - Carbon
 - Titanium Dioxide
 - Modifiers
 - Dilution methods for shading

WHY TRAIN WITH HALCYON?

Flexibility: Our programs consists of individual modules for flexibility.

Extensive curriculum: We believe basic fundamental theory is critical to success and want to ensure you adequate knowledge before starting your practical training. Many aspects of microblading and permanent makeup training overlap and our program ensures you have the knowledge for both techniques.

Certified trainers: Presenting a course involves not just knowing your content, but also knowing how to deliver that content to all learning types and abilities. Our trainers are certified and have studied course and lesson planning to ensure a professional and effective delivery.

Certified technician: Our trainers are SPCP trainer members and CPCP certified technicians.

HOW WE TRAIN

Manuals and Books: We provide manuals to ensure you have access to what you are learning, long after your training is complete. We also incorporate the SPCP textbook "Permanent Makeup -The Foundation of Fundamental Applications" into our fundamentals as this text is critical for basic permanent makeup and microblading understanding.

Pre-Class Preparation and Lifelong Support: Courses include pre-class reading and online tutorials to prepare you for your in-class sessions. We also offer students continued access to support in a closed student Facebook group.

In-Class Experience: Our classes are small and personal; students will work directly with a certified trainer. Classes consist of direct instruction, observation and hands-on practice on both practice mediums and live models. Students gain enough knowledge to become confident in their procedures.

Live Demonstration: Students will observe demonstrations of correct technique. With small classes students are able to have a clear view and the opportunity to ask questions. We encourage students to ask questions and take notes during live demonstrations.

Practice on Models: Students will have the opportunity to practice on live models under supervision and with guided support. Small class sizes allow for better trainer to student ratio to assure personalized learning and attention.

Module Based: Our modules are designed to allow flexibility in training but to also ensure you have completed the correct training before progressing to the next module.