

# Low Profile

Made in USA - Patented

# NO-PEST vent™

## Benefits that others cannot provide

### Closed position (not in operation)

- Birds and other pests cannot enter the "Exclusive Dual Door" design.
- Reduces energy robbing drafts from entering the residence through the vent.
- Clean look, fully closed design, no place for bees or wasps to nest.

### Open position (in operation)

- Most efficient air flow vent in the industry for reduced clothes drying time.
- No screen or guard to collect lint, plug-up and reduce air flow efficiency.
- Reduces dryer fire hazard caused by lint buildup.

### Maintenance - Annual duct cleaning recommended

- Ducts can be cleaned with lint brush from either side.
- Makes multi-story installation cleaning possible from the inside without using ladders.
- Tough U/V resistant plastic resists sunlight and cracking.

### Compare the No Pest Vent to our competition

- Vents with one-piece flap or 2 to 4 louvers.
  - \* Opening with their beaks, birds quickly build a nest for a well heated home.
  - \* Lint buildup causes unreliable louver closure allowing drafts and easier entry for birds.
- Vents with screen, floating shuttle, or add-on guards for existing vents.
  - \* Require weekly or monthly cleaning of lint buildup.
  - \* Lint buildup restricts flow which reduces dryer efficiency and creates a fire hazard.

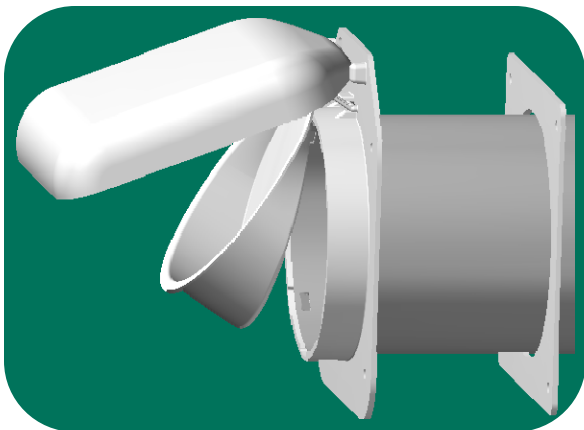
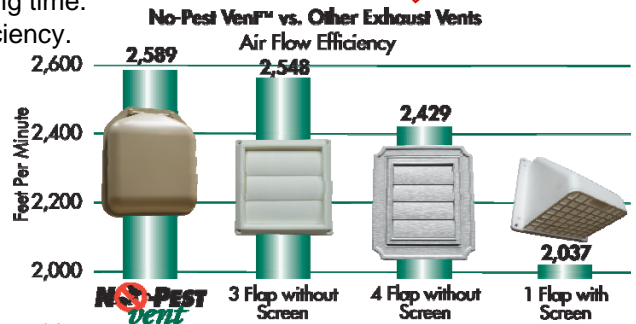
### Features

- Includes 4 inch diameter 12 inch long duct pipe.
- Used for clothes dryer, bathroom and stove/range hood exhaust vents.

### Installation

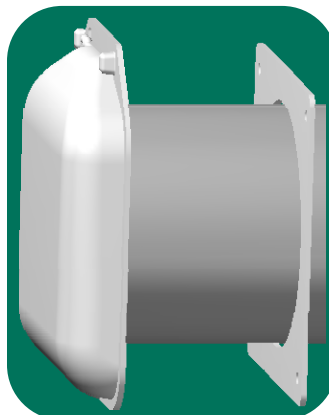
- ◆ Assemble tube and attach to faceplate with seam oriented up (see Figure 1).
- ◆ Insert tube thru hole in building.
- ◆ Fasten faceplate to building with screws using concealed mounting pattern (see Figure 1).

Most Efficient  
Maintenance Free  
Vents on the Market



**Attention!** Face plate must be installed flush so that doors close completely when not in use. Uneven installation will create a poor seal for doors.

**Attention!** Insert pipe with seam at top to avoid interference with inner door.



**Note!** Use #8 stainless steel screw in concealed under hood locations. Do not over tighten

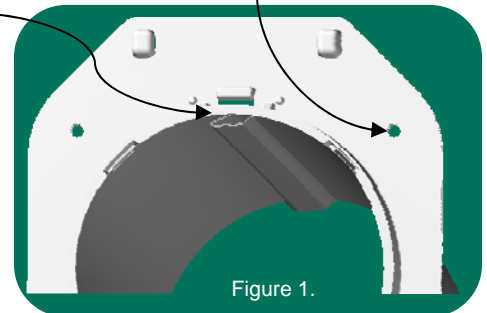


Figure 1.

**P-tec Products, inc.**

P 616-772-0659

F 616-772-1480

info@p-tecproducts.com

www.p-tecproducts.com

V110414

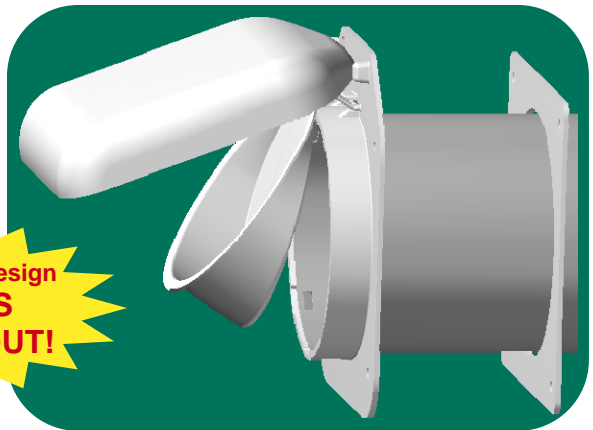
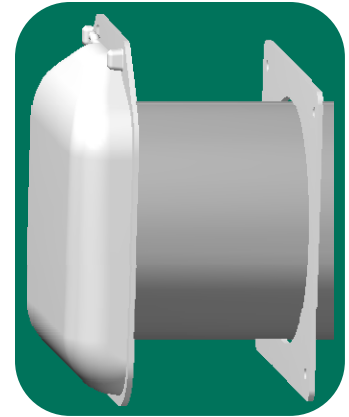
# Low Profile

Made in USA - Patented

# NO-PEST vent™

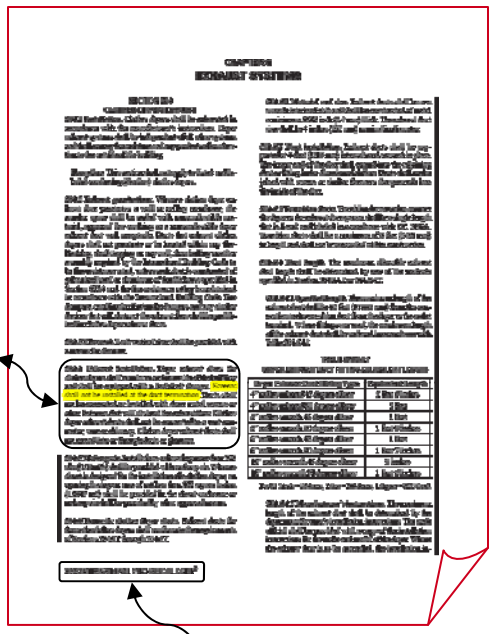
Available in three colors

White Tan Brown



**Dual door design  
KEEPS  
PESTS OUT!**

**504.4 Exhaust installation.** Dryer exhaust ducts for clothes dryers shall terminate on the outside of the building and shall be equipped with a backdraft damper. **Screens shall not be installed at the duct termination.** Ducts shall not be connected or installed with sheet metal screws or other fasteners that will obstruct the exhaust flow. Clothes dryer exhaust ducts shall not be connected to a vent connector, vent or chimney. Clothes dryer exhaust ducts shall not extend into or through ducts or plenums.



2009 INTERNATIONAL MECHANICAL CODE®

**P-tec Products, inc.**  
P 616-772-0659  
F 616-772-1480  
info@p-tecproducts.com  
www.p-tecproducts.com