

Powerful protection from Powdery mildew

Powdery mildew is a fungal disease that affects a wide variety of crops – and pome fruit is no exception. Luckily, all it takes to protect your crop is a protection plan that includes PROCURE® Fungicide and PH-D® Fungicide. This pair of proven performers works hard to keep your crops and your yield potential healthy and free from Powdery mildew all season long.

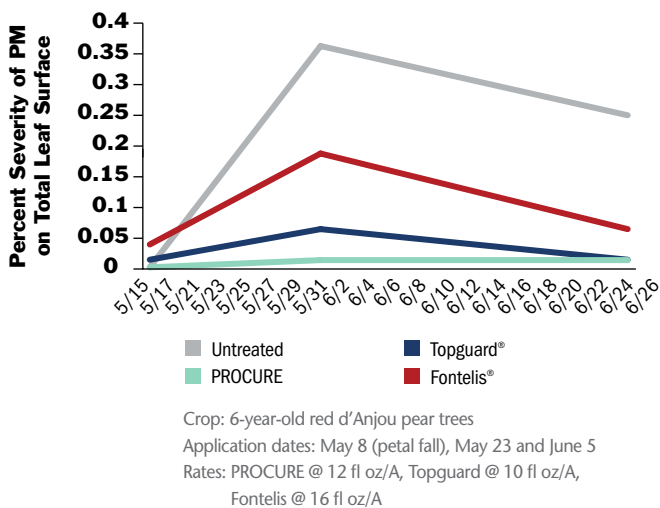


The time is now to get the gold standard in apple and pear protection. This locally systemic broad-spectrum Group 3 fungicide provides the kind of proven protection you need to get healthy yields and peace of mind. Plus, long residual control means it can work to keep your crop healthy all season long.

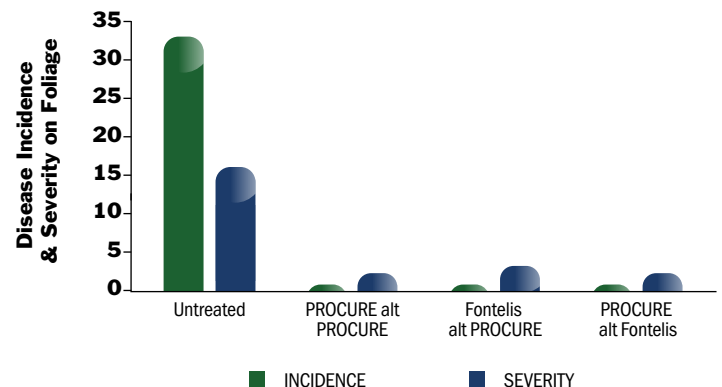


When your apples or pears show signs of Powdery mildew,* it's time to reach for a higher degree of protection. PH-D is a broad-spectrum Group 19 fungicide that prevents cell wall construction via chitin inhibition. This unique mode of action makes it a smart member of nearly any resistance management program.

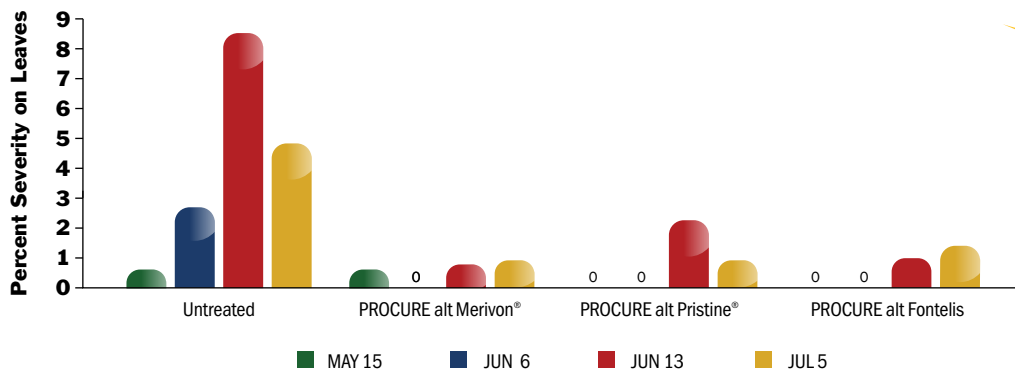
PROCURE Efficacy Against Powdery Mildew on Pears
Stephen Cockfield and Nicholas Stephens; NW Contract Research; Omak, WA



PROCURE Efficacy Against Powdery Mildew on Pears
Vernon Fischer; Columbia Ag Research; Hood River, OR



PROCURE Efficacy Against Powdery Mildew on Apples
 Stephen Cockfield & Nick Stephens; NW Contract Research; Arrowhead Ranch, Bridgeport, WA



Crop: Apple, cultivar "Honeycrisp"
 Application dates: April 26, May 10, May 23, June 13 and June 27
 Rate: Mistblower @ 100 GPA
 Phytotoxicity: None observed

Application Rates and Timing

PROCURE

DISEASE CONTROLLED	RATE (fl oz product/A)	APPLICATION TIMING AND INFORMATION
Powdery mildew (<i>Podosphaera leucotricha</i>)	8–16 fl oz/A	Spray at first sign of mildew, usually at the 1/2" green tip stage. Continue applications at 7- to 14-day intervals as needed through the terminal growth period. PROCURE 480SC may be applied up to 14 days prior to harvest.

PH-D

DISEASE CONTROLLED	RATE (oz product/A)	APPLICATION TIMING AND INFORMATION
Powdery mildew* (<i>Podosphaera leucotricha</i> , <i>Phyllactinia mali</i> , <i>Oidium</i> spp.)	6.2 oz/A (0.7 oz ai/A)	Mix spray volume appropriate for sufficient coverage. Apply as a foliar spray every 7–10 days for foliar diseases. Apply prior to disease development and when conditions are conducive for disease. Start sprays for scab control at green tip and continue as needed on a 7- to 10-day interval. For Powdery mildew control, begin preventively and repeat as necessary on a 10- to 14-day interval. The use of an alternation program with a sterol-inhibiting fungicide is recommended. 0-day pre-harvest interval.

*Not registered for use in California.

FEATURES AND BENEFITS

PROCURE

- Rapid absorption
- Unique imidazole chemistry within the Group 3 DMI fungicides
- Tank mixable
- Secondary action on Scab and Cedar apple rust

PH-D

- 0-day pre-harvest interval
- Rainfast when dry on leaf
- Tank mixable
- Secondary action on *Botrytis*, *Alternaria*, *Cladosporium* and *Diplocarpon*

To learn more about PH-D and PROCURE, ask your retailer or PCA for more information, or visit ArystaSpecialty.com/PomeFruit today.



Always read and follow label directions. The PH-D logo is a trademark and PH-D is a registered trademark of Arysta LifeScience North America, LLC. PROCURE is a registered trademark of MacDermid Agricultural Solutions Inc. Topguard is a registered trademark of Cheminova. Fontelis is a registered trademark of DuPont or its affiliates. Merivon and Pristine are registered trademarks of BASF. Arysta LifeScience and the Arysta LifeScience logo are registered trademarks of Arysta LifeScience Corporation. ©2016 Arysta LifeScience North America, LLC. SPC-1617