



INSECTICIDE

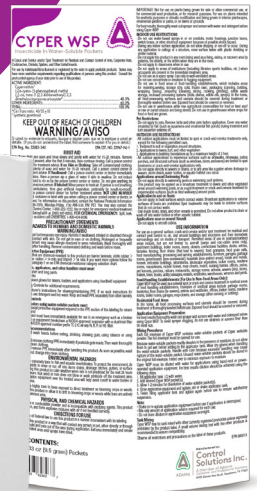
# CYPER WSP

## INSECTICIDE IN WATER SOLUBLE PACKETS

Cyper WSP provides quick knockdown and long lasting control of more than 30 different pests.

### Advantages of using CYPER WSP

- Convenient and easy to use
- Quick knockdown with long lasting residual



### How it Works

Cypermethrin attacks the central nervous system of insects that come in contact with it or ingest it.

### Use sites

Commercial & Residential Indoors & Outdoors: Crack-and-Crevice, Spot Treatments, Apartments, Factories, Garages, Hospitals, Hotels, Nursing Homes, Office Buildings, Kennels, Restaurants, Schools, Warehouses, Interior Landscapes, Ornamental Gardens, Parks and Lawns

### Insects Controlled

Ants, Aphids, Assassin Bugs, Boxelder Bugs, California Oakworm, Centipedes, Chiggers, Cockroaches, Crickets, Earwigs, Elm Leaf Beetles, Firebrats, Fleas, Flies, Millipedes, Mosquitoes, Pillbugs, Silverfish, Sowbugs, Termites, Bees, Carpenter Ants, Carpenter Bees, Fire Ant (Mounds), Scorpions, Sod Webworms, Spiders, Ticks, Wasps, and others

### Active Ingredient

40% Cypermethrin

### Packaging

6 x 1 lb pail/case (36 cs/pallet)  
12 x 4 x 9.5 grams/case



**Control Solutions Inc.**

A member of the ADAMA Group



@csi\_pest



@csipest