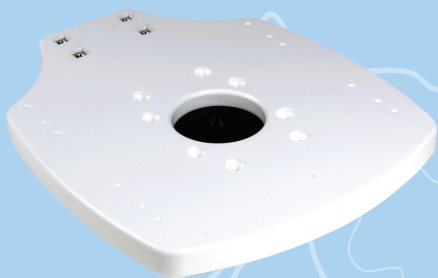




## STARLINK ACCESSORIES (Flat High Performance)



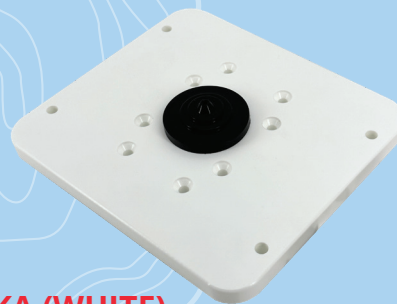
### ADAR1DMLTB (WHITE) ADAR1DMLTBBLK (BLACK)

Starlink Maritime (Flat High Performance) top plate for Seaview "M1" and "M2" style modular mounts

- Starlink Wedge Base hole pattern pre-dimpled in this modular top plate
- Water-tight gasket in the center of the plate to pass the Starlink cable
- The 1" thick starboard plate can accommodate a Seaview light bar



Example shown:  
PMA57M1BLK + ADAR1DMLTBBLK + LTBRBLK + LTBLD12BLK  
with SVSLWBBLK black wedge base



### ADASTLKA (WHITE) ADASTLKABLK (BLACK)

Starlink Maritime (Flat High Performance) top plate for Seaview "M1" style modular mounts

- Water-tight gasket in the center of the plate to pass the Starlink cable
- This is not light bar compatible
- All mounting hardware is included
- (5", 10", 16", 24" & 36" options are available)



Example shown:  
PMA57M1 + ADASTLKA  
with SVSLWB white wedge base

### SVSLWB (WHITE) SVSLWBBLK (BLACK)

The Seaview Aluminium 8° Wedge Base for the Starlink Flat High Performance antenna has been specifically designed for the marine environment (chem treated with a 3 part polyurethane prime and powder coat to ensure the best possible finish and corrosion resistance).

This wedge base is a direct replacement for the gray Starlink wedge base.

- Designed to fit the Starlink Flat High Performance Antenna
- Pre-drilled mounting holes allow the hardware to fasten directly to the wedge
- Drilled and tapped for the CG30PG2 cable seal that may or may not be provided with the Starlink Antenna
- No need to cut the Starlink connectors for installation
- Available in white or black



Example shown:  
PMADM1M2 + ADAR1DMLTB + LTBSF4 + LTBLD12  
with SVSLWB white wedge base



## STARLINK ACCESSORIES

(Standard & High Performance / Antenna with Post)



### SV114STLK

- 316L stainless steel Starlink adapter to mount to a 1"-14 threaded post
- Bottom of the adapter has 1"-14 threads and comes with locking nut
- Top of the adapter is machined to fit the Starlink antenna post
- The SV114STLK is 3 5/8" tall

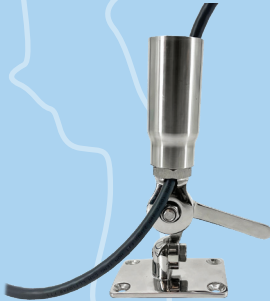


### SV114STLKFB

- 316L stainless steel Starlink adapter and fixed base
- Top of the adapter is machined to fit the Starlink antenna post
- The overall height is 4" (adapter with the 3" diameter fixed base)
- The Starlink cable can pass through the entire adapter and exit out the center of the fixed base OR the cable can exit just before the adapter if preferred\*



\* Cable Seal Sold Separately



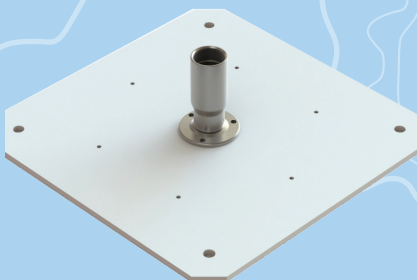
### SV114STLKR

- 316L stainless steel Starlink adapter with a 1"-14 threaded ratchet base
- Top of the adapter is machined to fit the Starlink antenna post
- The overall height is 7 1/2" (adapter with the ratchet base) Base measures 2 1/2" x 3 9/16" with 4 holes for 1/4" bolts
- Mount has 3/8" hole for cable pass through



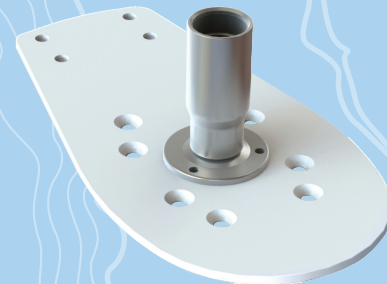
### SV114STLHRM

- 316L stainless steel Starlink adapter with rail clamp
- Top of the adapter is machined to fit the Starlink antenna post
- The S.S. rail clamp includes 3 rubber bushings to fit 1", 1 1/8" & 1 1/4" diameter rails



### SVK24STLK

- 316L stainless steel Starlink adapter with a 1"-14 threaded fixed base on 1/4" aluminum plate
- The 1/4" aluminum plate is powder coated white and fits inside an empty 24" KVH or Intellian dome



### ADASTLK

- 316L stainless steel Starlink adapter with a 1"-14 threaded fixed base on 1/4" aluminum plate
- Top of the adapter is machined to fit the Starlink antenna post
- The adapter with the fixed base and modular plate is 4 1/4" tall
- The 1/4" aluminum plate is powder coated white and can accommodate a Seaview light bar

\* If you are running the Starlink cable externally we recommend using a Seaview cable seal for waterproof cable entry. The example in the images is the CG30SS.