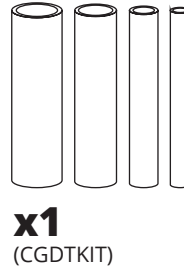
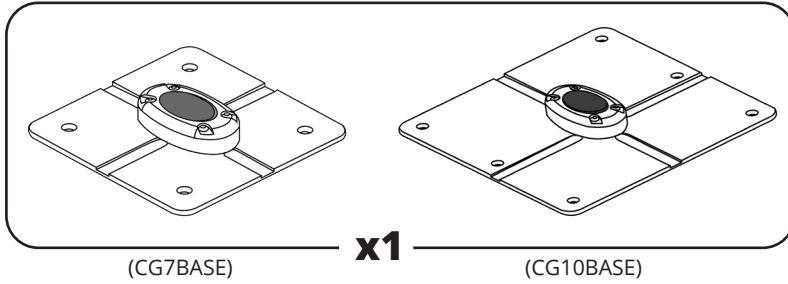


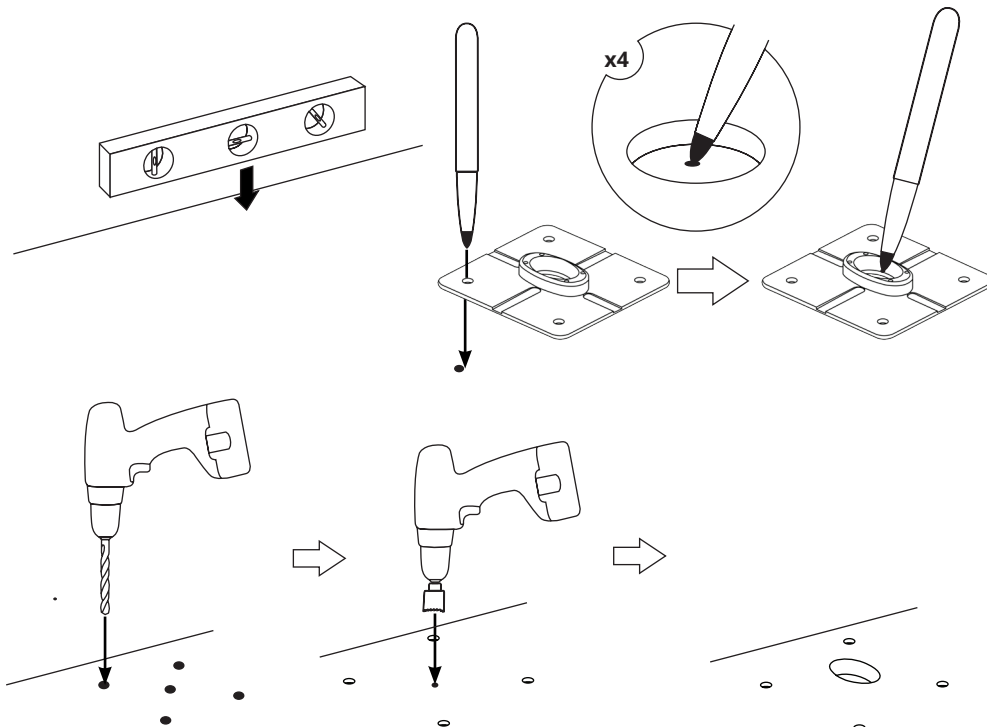
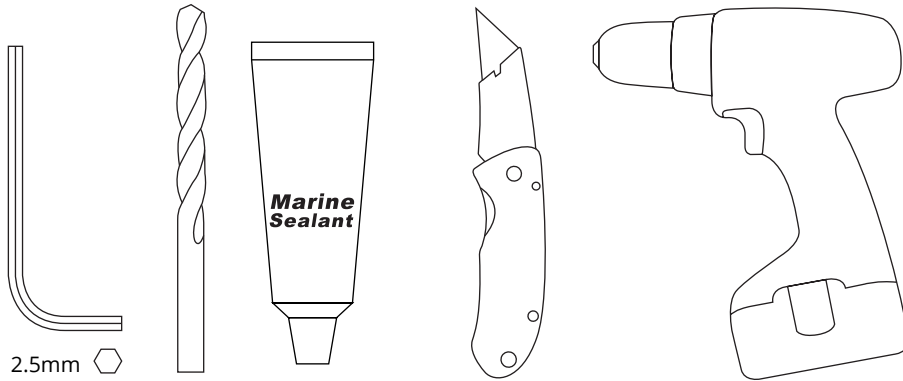
CABLE SEAL BASE INSTRUCTIONS

SEAVIEW//

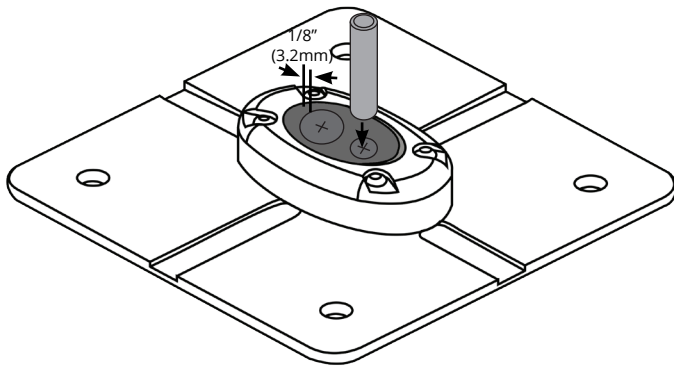
PARTS INCLUDED



TOOLS NEEDED

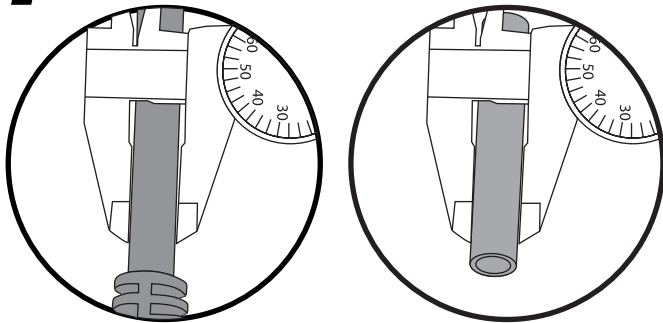


NOTE: BEFORE YOU BEGIN



- It is not necessary to dry fit if using drill tubes. Dry fit is recommended if using a drill bit to securely hold the rubber in place.
- Make sure that you do not drill within 1/8" (3.2mm) from the edge of the tapered plug.
- Drill tube is recommended. However, if using a drill bit, a slightly larger drill bit is needed for drilling the rubber.
- This cable seal base will work with multiple cables. Make sure each cable has its own hole and there is at least .125" of rubber between each hole.

1



Measure your cable diameter and select the appropriate drill tube provided. Cable diameter $+.01/-0.03$

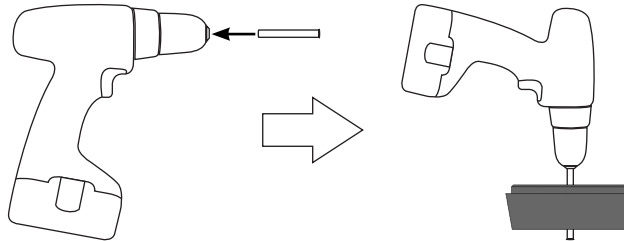
2A

1



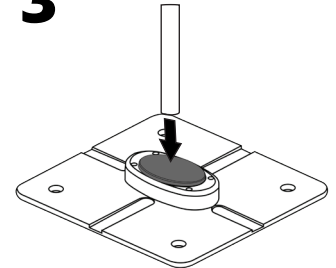
Take one of the four drill tubes (included with the Cable Seal). Double check to make sure the tube is the right diameter for your installation.

2



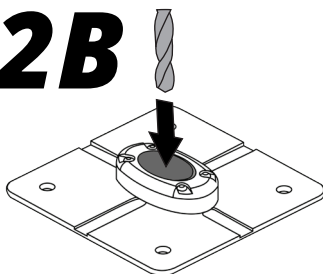
Insert drill tube into drill motor, and leave enough length to get through the tapered plug.

3



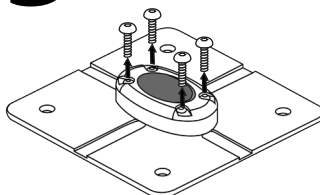
Apply small amount of soapy water to the tube and slowly drill the rubber plug.

2B



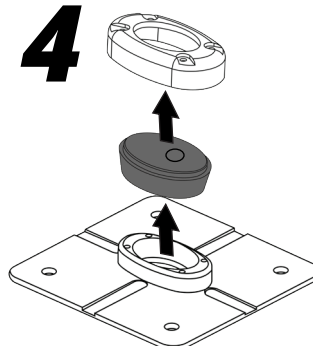
If using a drill bit, the cover should be securely tightened to help hold the rubber while drilling. The drill bit should be run repeatedly through the rubber.

3



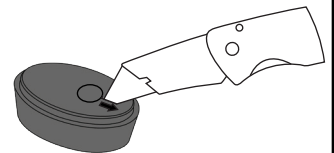
Remove the four screws using a 2.5 mm allen wrench.

4



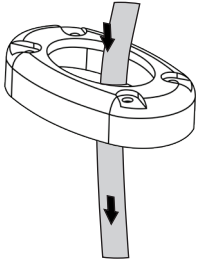
Remove the Cable Seal cover and tapered plug.

5



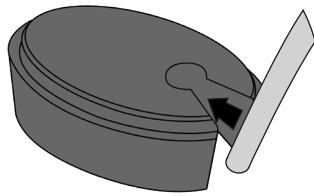
Using a sharp razor blade or knife, cut the tapered plug from the cable hole outward.

6



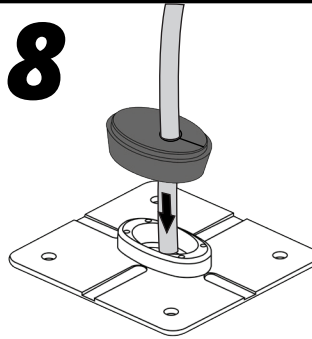
Slide the Cable Seal cover over the electronic cable.

7



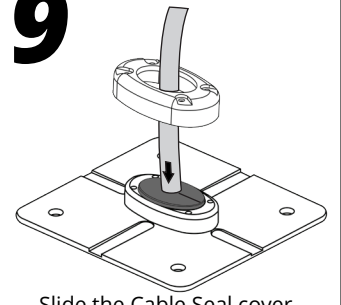
Wrap the tapered plug around the electronic cable.

8



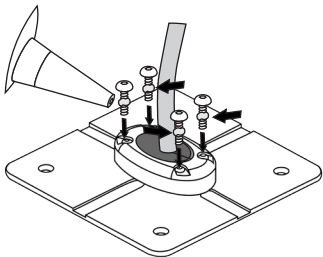
Insert the electronic cable and tapered plug into the plastic base.

9



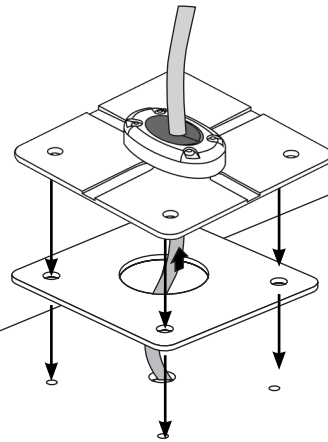
Slide the Cable Seal cover onto the plastic base making sure that all four bolt holes line up.

10



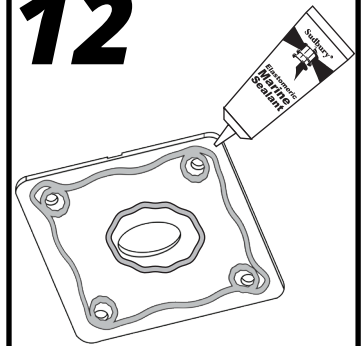
Apply marine sealant to the four allen head screws and tighten.

11



Place the foam gasket and cable seal base plate over the bolt holes.

12



If you prefer not to use the foam gasket apply marine sealant to the cable seal base plate.

SEAVIEW

800-655-7922

www.seaviewglobal.com

12-06222021