

 > Lifestyle > Interiors

12 front-door design ideas to add value

Brought to you by **LONDON DOOR COMPANY**
THE EXCEPTIONAL FIRST IMPRESSION



Style it up: consider the possibilities that colour, print, and plants can add to your entrance CREDIT: GETTY

By **Claire Bingham**

Add to the kerb appeal of your house – and hopefully to the value – with the most desirable colours, styles, furniture and security features

1 Make a bold statement

The secret to a house with an eye-catching style is to be daring with colour. Don't hide the first thing you see – show it off. Colour is key to luring buyers and it will stand out in photographs too – a point Foxtons sales manager David Roberts is keen to point out. “Nowadays with most property searches starting online, it's all the more important for a property to stand out in photography. In a survey we commissioned in 2017, we found that more than 85 per cent of house hunters agreed that the immediate impression they get of a property will determine whether they buy it or not.”

2 Think pink

Pinks and blues are the current go-to for adding a splash of colour. Take your colour cue from the most Instagrammed pink façade of Peggy Porschen's cakes café in London's King's Road and hang the [Pink Victorian Door](#) from London Door Company.



3 The best hardware

Hardware is everything – never skimp. It will get the most use and should be robust and beautiful. Interior designer Gabrielle Blackman suggests that brass looks gorgeous on a Victorian or Georgian house, whereas it’s best to stick to nickel or bronze for a modern property. “I also love a crazy knocker to add a bit of personality,” she adds.



Finishing touches: consider what hardware you can (and want to) utilise with your door CREDIT: LONDON DOOR COMPANY

4 Classic focal points

For a handsome front door, and also for a house built with London-stock red brick, you can’t go wrong with the colour black. Glass panels also add character and flood your hall with light – all factors that help to make a great first impression. Try this [Victorian door](#) option, which has eye-catching stained-glass and brass detailing.



5 Smart and sturdy

Ensure your front door is properly prepared with the correct finishes to protect the timber from the elements without compromising on the design. London Door Company uses a specialist wood called Accoya, which has been modified by a process called acetylation to make it incredibly strong and rot-resistant.

6 Old vs new

Context is king. Consider the history of the building so that your door doesn't stand out for the wrong reasons. Blackman says: "Always choose your door style to match the period of your house. You can be as daring as you like with colour, but when it comes to period detailing never stray."



The right fit: a Victorian front door from London Door Company CREDIT: LONDON DOOR COMPANY

7 Add a porch

Not only does this elevate your façade, a porch maximises on vital storage too. When planning any building works, speak to tradespeople and suppliers as early as possible. Good ones are in high demand and you may need to plan your schedule around theirs.

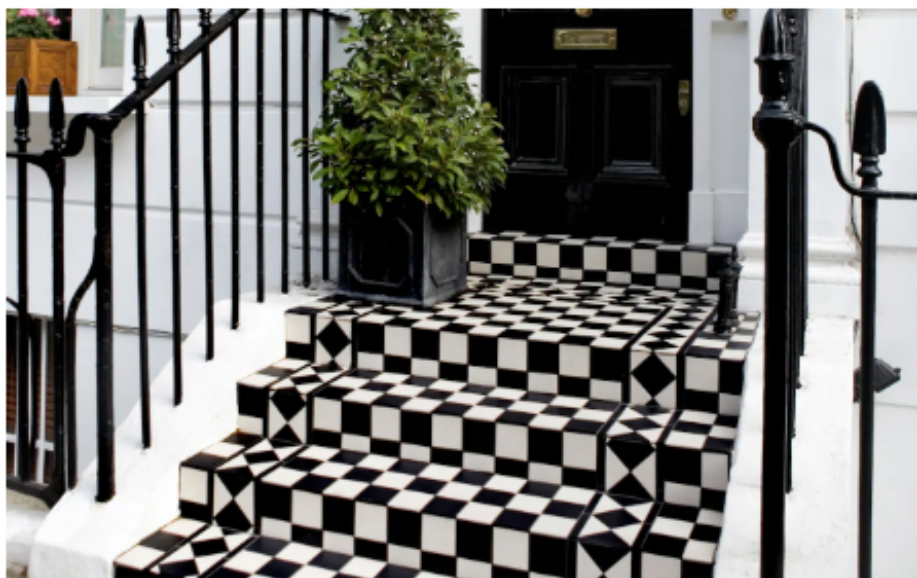


8 Street lights

Don't forget to think about how your entrance will look at night. As with interiors, lighting matters. For wooden doors, solid brass, copper or aluminium lighting works well and will develop an elegant patina with age.

9 Step out

Colourful, patterned tiling is the new dream flooring for your porch or front garden path. Take your cue from the Victorians and play with reclaimed mismatched tiles. British brand Bert & May sells beautiful cement tiles in contemporary monochromes, which will complement brickwork perfectly. For Parisian style, try Emery & Cie.



Be bold: don't be afraid to introduce strong pattern through floor tiles CREDIT: GETTY

10 Georgian style

"I was born and grew up in Dublin, which is famed for many things not least of which are the magnificent Georgian front doors," says Pimlico Road, London-based designer Luke Irwin. "So in my eyes, the perfect front door is Georgian with at least six panels. It should certainly have a fan light above it and also a lantern fixed centrally above the door." Try [this elegant option](#).



11 Say it with flowers

Flower baskets and containers at the door will make arriving home even more of a joy. At Petersham Nurseries, the horticultural team mostly use perennial plants to give a natural feel. For planting they advise to start with the tallest first, adding it to the back of the pot, just off centre so it's not too neat. Finish with annuals only on one third of the edge – again, to keep it looking natural – and mulch the top of the soil with moss to help retain moisture.



Plant for pleasure: introduce planting and flowers to create a great first impression CREDIT: GETTY

12 Night light

Don't forget to think about how your door looks and functions at night. Co-founder and design director of Astro Lighting James Bassant suggests combining several layers of light for added impact. "Lights either side of a doorway combined with small ground up lights will instantly give more definition and drama."

The exceptional first impression

London Door Company has more than 30 years' experience in providing beautiful handmade doors for homes in London and is one of the market leaders for bespoke doors. It manufactures every order by hand using traditional methods and ensures each door perfectly meets the functional and aesthetic needs of your home.

Request a free brochure at londondoor.co.uk

