

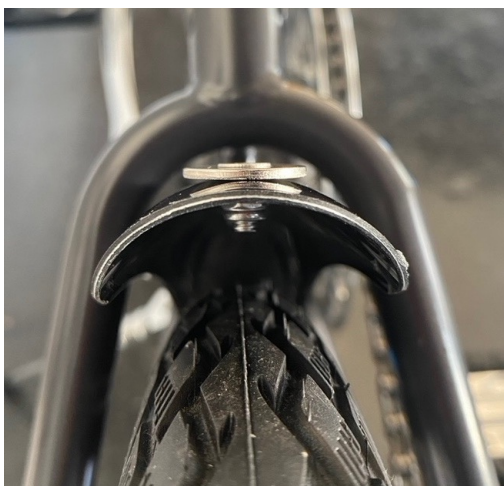
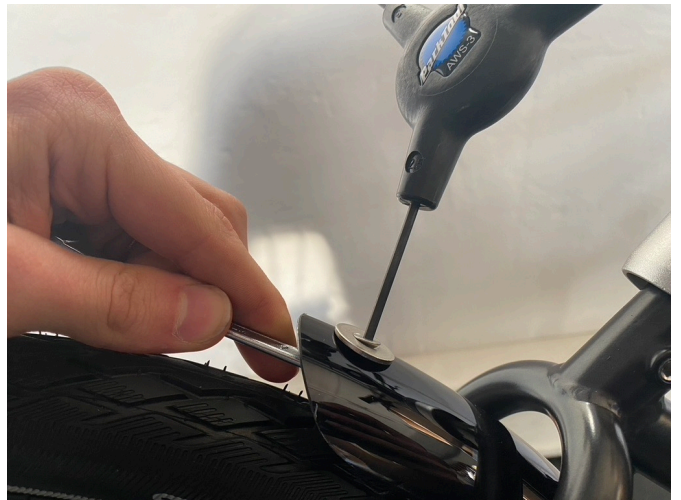
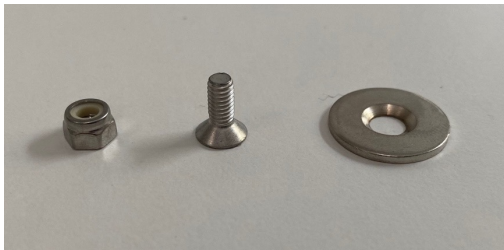
# Mudguard installation standard tires

This bulletin illustrates how the [VELLO mudguards](#) are installed on VELLO Rocky/ Alfine / Bike+ / Speedster models and all other VELLO bikes that have narrow tires ( $\leq 1.5''$ ). Since wider tires ( $\leq 2.0''$ ) require extra steps, please be sure to refer to this [special guide](#) if this applies to you.

## Start with the rear mudguard

### Step 1 - Prepare existing mudguard

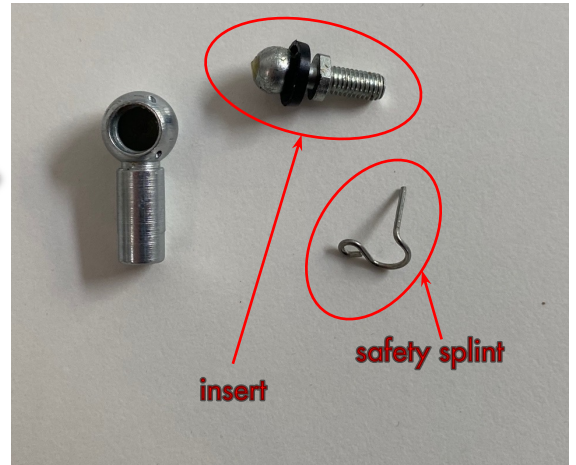
Attach the included washer as shown. You need a 3 mm Allen key and a 7 mm open-end wrench. The rear wheel does not have to be removed for this. Tip: If you have trouble holding the nut in place, use a piece of tape to tape the wrench shut on one side. This prevents the nut from falling out.



# Mudguard mounting rear (with standard tires)

## Step 2 - Disassembling the frame mounting ends

Unscrew the frame mounting ends from the struts. Remove the inserts from the frame mounting ends. To do this, first remove the safety splints. Then, either use pliers or proceed as shown [here](#).



## Step 3 - Attach inserts to frame

Now screw the inserts into the designated points on the frame. A 7 mm wrench is required for this.

Note I: If the inserts do not easily grip one of the two lower thread points on the frame, use one of the matching screws provided to remove paint residue from the thread (as shown).

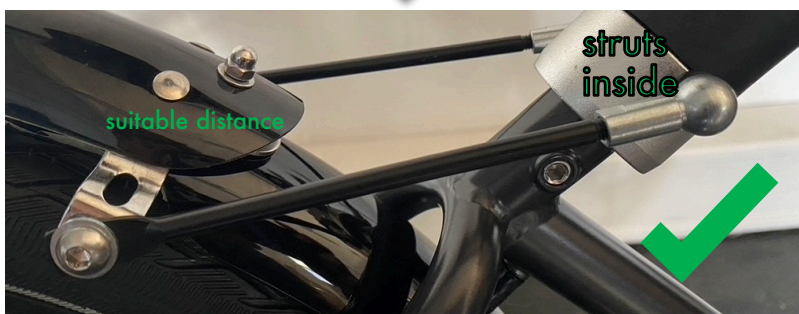
Note II: If it is not possible to fully screw the insert into the thread, do not force it further, but leave a small gap.



# Mudguard mounting rear (with standard tires)

## Step 4 - Prepare and snap on the mudguard

Now screw the frame mounting ends (inserts are already on the frame) four threads onto the mudguard struts. Then snap the mudguard/frame mounting ends onto the inserts by applying sufficient sideways pressure to the frame mounting ends until there is no longer any gap between the insert and the frame mounting end (see pictures on the right). The new mudguard's pre-installed magnet should now be 'connected' to the washer, but need not be flush. If the pieces are not connected, the frame attachment ends will need to be screwed in further (see images to the left). To do this, the frame attachment ends must be removed from the inserts and snapped back on after the length adjustment.



It is common for the mudguard to initially sit off-center. To fix this, vary the lengths of the struts by screwing the frame mounting ends in or out (maintain the minimum four turns!). You can also help a little manually (see [here](#)).

# Mudguard mounting rear (with standard tires)

## Step 5 - Install safety splints

When the mudguard is centered and there is enough space between the mudguard and the tire, reinstall the safety splints.



## Step 6 - Finishing touches

Make sure that the fasteners on the front end of the mudguard can move freely, i.e. the screws must not be locked with the nuts so tightly that the struts are clamped (which is also not necessary due to the self-locking nut). This is important so that the mudguard can move freely when folding the VELLO.

# Mudguard mounting front (with standard tires)

The second part describes the assembly of the front mudguard.

## Step 1 - Preparation

Mudguard, strut and accessories (as shown on the right) can be found separately in the packaging. We start by attaching the strut.



## Step 2 - Attaching the strut

Starting on the drive side, swap the short screw attaching the hook plate to the fork for a longer screw and tighten. The eyelet of the strut is then clamped onto the fork using the enclosed self-locking nut (the opening of the eyelet should face downwards). Do not tighten the nut yet.



Then use a short screw to clamp the other eyelet (facing down) on the non-drive side of the fork. It is advisable to use a medium-strength/blue loctite. Do not tighten the screw yet.



# Mudguard mounting front (with standard tires)

## Step 3 - Attach mudguard

Now attach the modified/widened mudguard. To do this, use the screw, two washers and the self-locking nut in this order (front - rear): screw, washer, fork, mudguard mounting plate, washer, nut. You will need a 5mm allen key and a 10mm wrench to tighten.



## Step 4 - Connect fender and strut

Now connect the fender and strut by inserting the fender into the slot provided in the plastic bridge. Do not use force and make sure the strut is not under tension.



# Mudguard mounting front (with standard tires)

## Step 5 – Align & tighten fender

If you haven't already done so, attach the fender at the top of the fork. Pay attention to the correct positioning (centered, sufficient distance). Now tighten the nut and bolt to lock the strut in place. Now loosen the black knurled plastic locks at the other end of the strut to adjust the length. When the mudguard is positioned centrally and with enough air to the tire, tighten it again (just with your fingers, no tools!).



## Step 6 – Attach self-tapping screw

Finally, use the small black self-tapping screws to securely fasten the fender to the plastic bridge.



**Done. Have a safe (and dry) ride!**