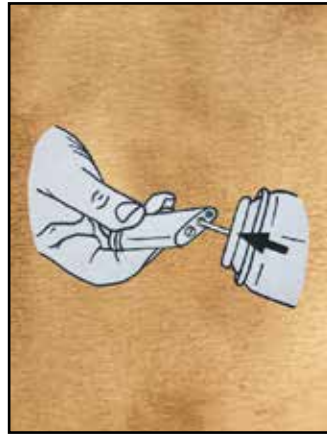


LM



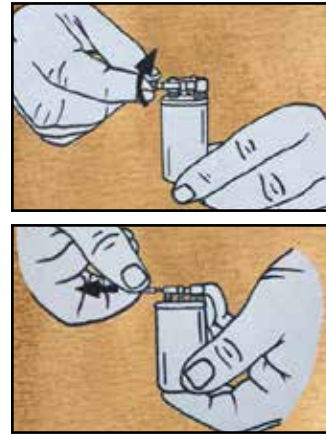
Remove the flint lighter from the metal case. Reverse the lighter and refill using butane gas.

LM



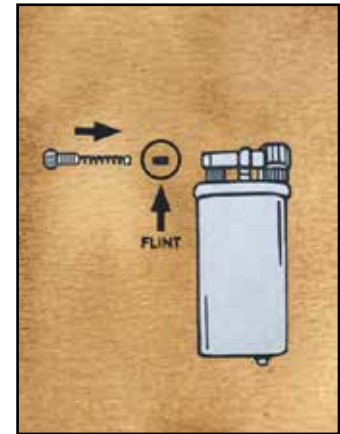
Press the stem of the refill can directly onto the refill valve on the bottom of the lighter. Keep them in a straight position and press for about 5 seconds.

LM



Remove the flint unscrewing and extracting the spring as the picture above. Drop the flint on a flat surface and change it with a new one.

LM



Drop the new flint down into the flint hole. Reinsert the spring into the hole and refasten the screw.