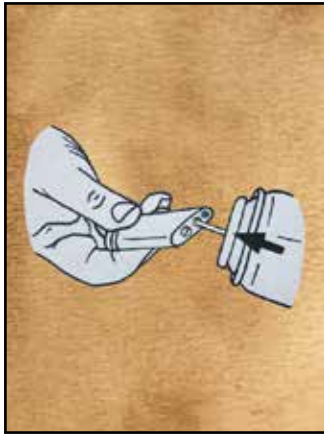
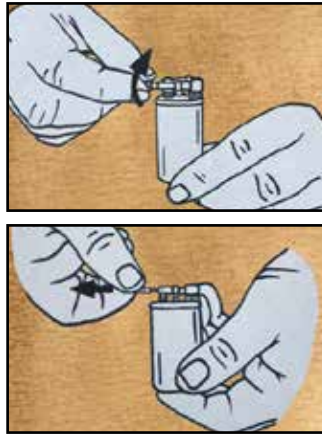


LM



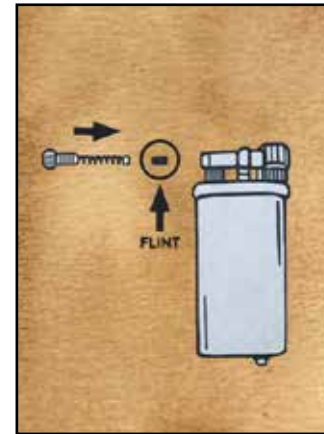
Reverse the lighter and refill using butane gas. Press the stem of the refill can directly onto the refill valve on the bottom of the lighter. Keep them in a straight position and press for about 5 seconds.

LM



Remove the flint unscrewing and extracting the spring as the picture above. Drop the flint on a flat surface and change it with a new one.

LM



Drop the new flint down into the flint hole. Reinsert the spring into the hole and refasten the screw.