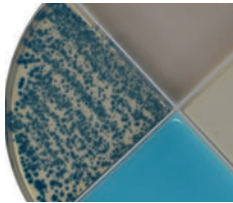


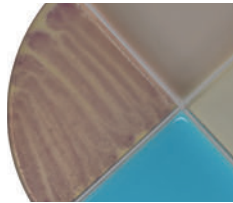


UTid+™ is a companion animal in-clinic culture system for diagnosing common bacteria and fungi associated with general infections, including urinary tract (UTI), skin conditions, ear disease, and much more. The UTid+ test uses a four-section plate system, enabling veterinarians to accurately diagnose almost all commonly encountered infections faster, provide more affordable and timely treatment plans and improve the final outcome for both the pet and its owner.

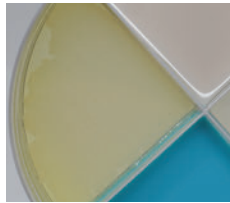
SECTION 1: GRAM NEGATIVE SPECIES



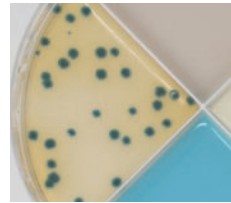
Large, blue round colonies = *Klebsiella* spp.



Pink, feathery colonies = *E. coli*



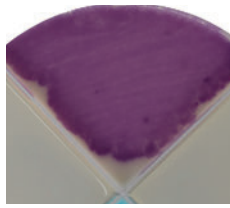
White round colonies, with or without yellow media discoloration = *Pseudomonas* spp.



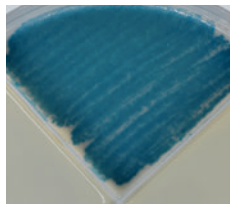
Green or orange (depends on species) = *Proteus* spp.



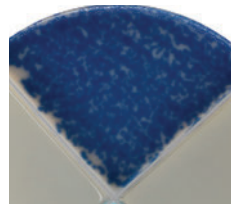
SECTION 2: STREPTOCOCCUS & ENTEROCOCCUS SPECIES



Purple colonies = *Enterococcus* spp.



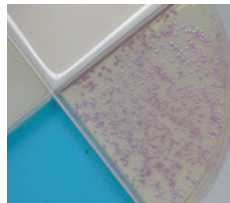
Different shades of blue colonies = *Streptococcus* spp.



SECTION 3: STAPHYLOCOCCUS SPP.



White, off white and/or yellow colonies = Coagulase negative staphylococcus spp. (*chromogenes*, *haemolyticus*)

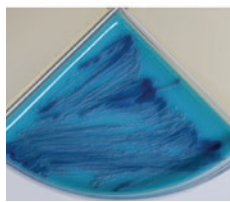


Pink colonies = *Staphylococcus aureus*

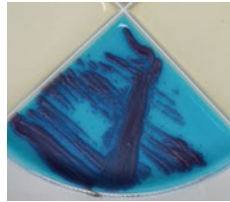


Pale pink colonies = *S. Epidermidis*

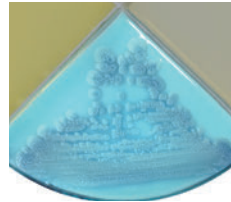
SECTION 4: FUNGI



Blue colonies = *Prototheca*



Purple colonies = *Malassezia*



White colonies = *Candida*