

Cannabinoid Analysis Report



BRITISH CANNABIS

Analytical Test Parameters

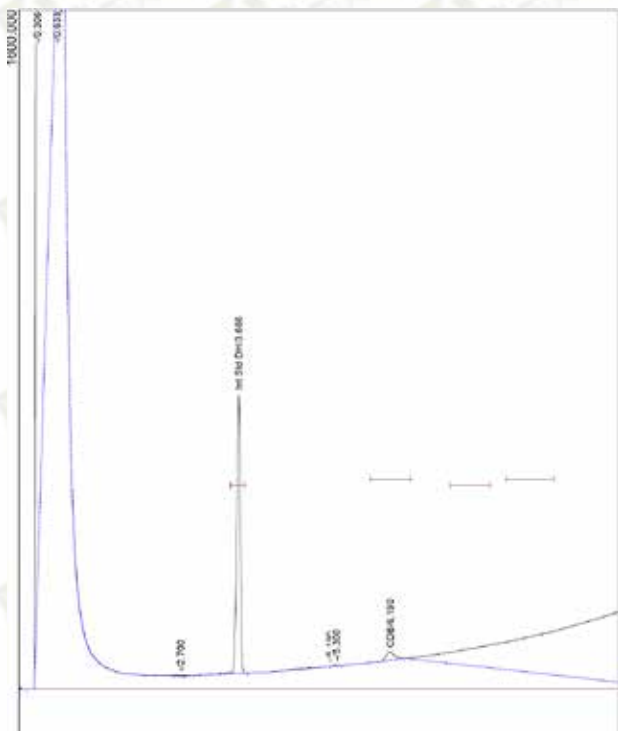
Sample Name	CBD Cream 250mg	Method	Gas Chromatography
Date-Time	21-Feb-2019 10:23:20	Test Type	Cannabinoids
Client Name	Somnio CBD	Batch Code	5043507

Results

Cannabinoid	%	MG	Cannabinoid	%	MG
CBD	0.67	268.0000	CBDa	Not Tested	Not Tested
THC	< 0.05	Not Detected	THCa	Not Tested	Not Tested
CBN	< 0.05	Not Detected	CBNa	Not Tested	Not Tested

The chromatogram is a representative graph produced by a Gas Chromatograph (GC) when analyzing a given sample. The chromatogram provides relative concentrations within a sample for compounds of interest. After a sample is injected into the GC, it moves through the column oven, a narrow column within a heated oven. As the sample moves through the column oven, the temperature rises to a predetermined value over a set amount of time. Compounds within the sample will separate from one another and elute from the column in a sequence determined by the chemical properties unique to each compound (vaporisation temperature, molecular weight, partition coefficient). These vapors pass through the Flame Ionization Detector for quantification. This information is then illustrated in the form of a peak. The larger the area under a peak, the more compound exists in a sample. Our GC uses what is called a "reference peak" or "internal standard". This allows us to calibrate our GC so that each sample tested will be analyzed against a known amount of compound, in this case CBD, THC, and CBN.

Chromatogram



This report and all information herein has been confirmed by the authorised persons named below. The report should not be reproduced, except in its entirety, without written consent of the laboratory. Results are applicable only for the samples tested and the specific tests conducted. All tests are carried out under strict laboratory protocols, guidelines and supervision.

Authorised by:

James Bozeman, Head Analytical Chemist