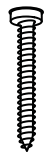


SINGLE SPRAY CAN HOLDER

INSTALLATION INSTRUCTIONS

KOOVA

v 1.0



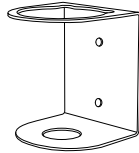
2x Screws



2x Screw Covers



2x Drywall Anchors



1x Spray Can Holder

TOOLS NEEDED

- Phillips head screwdriver
- Level (optional but recommended)

STEP ONE: MEASURE AND MARK

Hold the Spray Can Holder on the wall where you want it to go and mark the position of the two holes on the wall (*figure a*). It is helpful to use a level to ensure the shelf is straight.

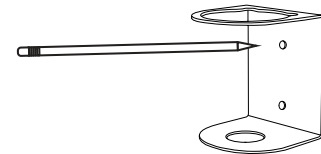


figure a

NEED A LEVEL?

Your smartphone may have a level app already installed. If not there are many free apps available for most smartphones.

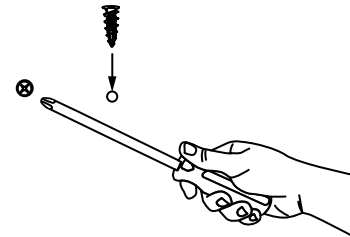


figure b

STEP TWO: INSERT ANCHORS

Using a phillips head screwdriver, install the drywall anchors into the wall at the marked locations (*figure b*).

STEP THREE: MOUNT HOLDER

Line up the shelf with the drywall anchors and install with included screws (*figure c*).

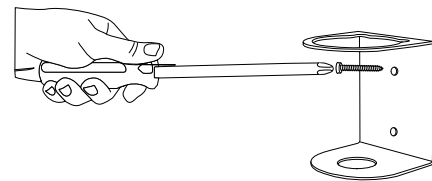


figure c

STEP FOUR: COVER SCREWS

Complete installation by snapping the black covers onto the head of each screw (*figure d*).

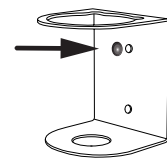


figure d

SHOW US HOW YOU KOOVA!

We'd love to see how you use your Koova organizational products. Take a photo and send it to us at support@koova.com or post it to your favorite social media channel and tag us using the hashtag #storganization! You might get featured on our socials or a chance to win new products!



FACEBOOK

facebook.com/KoovaOrganized



INSTAGRAM

instagram.com/Koova_Organized



PINTEREST

pinterest.com/KoovaOrganized



TWITTER

twitter.com/KoovaOrganized

KOOVA HELPS YOU PUT EVERYTHING IN ITS PLACE!



GOLF BAG ORGANIZATION



GARDEN & GARAGE ORGANIZATION



TOOL ORGANIZATION



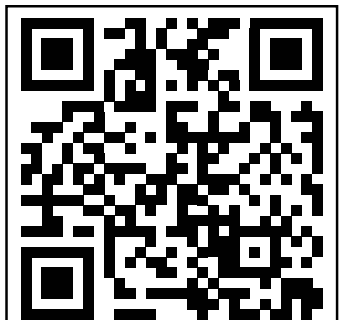
SKATEBOARD ORGANIZATION



HOME ORGANIZATION



HOME OFFICE ORGANIZATION



SHOP
KOOVA.COM
FOR OTHER
GREAT
ORGANIZATIONAL
SOLUTIONS