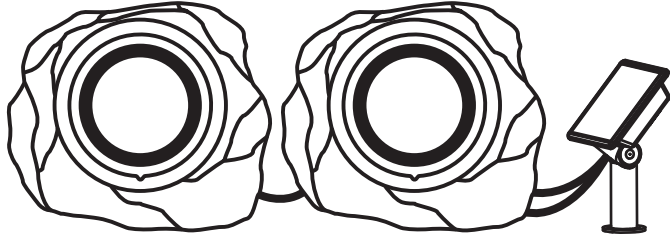


SOLAR LED ROCK SPOTLIGHT with Adjustable White Color

ITM. / ART. 57603
Model: LM030367



IMPORTANT INFORMATION. PLEASE READ CAREFULLY AND RETAIN FOR FUTURE REFERENCE.

For assistance with assembly, installation, parts or customer service, please contact us:

info@kodabuilt.com

1-866-294-9244, Monday to Friday, 8am to 5pm Pacific Time

2975 Red Hill Ave., Suite 100, Costa Mesa, CA 92626, USA

SAFETY INSTRUCTIONS:

Read this manual thoroughly before first use and keep it in a safe place for future reference.

Keep the LED Light out of children's reach; it is not a toy.

The LED Light should be installed outdoors in order to receive sunlight for charging.

BATTERY REPLACEMENT INSTRUCTIONS:

When replacing the battery, be sure to:

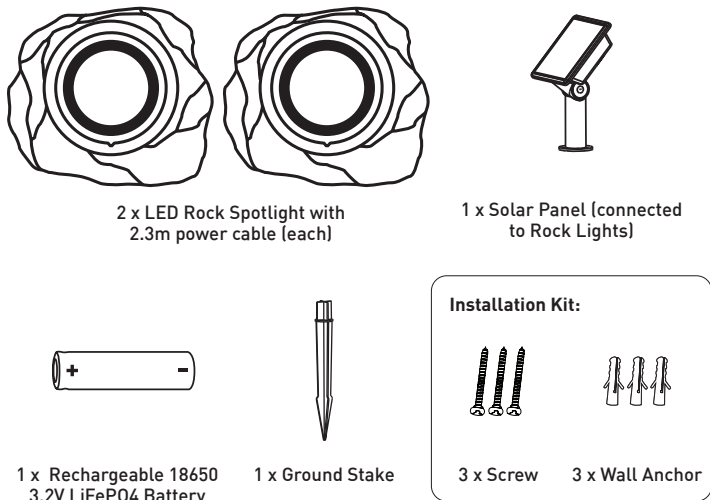
- Use a rechargeable battery only.
- Match the replacement battery specifications with the battery being removed.
- **IMPORTANT:** Dispose of the Lithium ion battery in accordance with local, state and federal regulations.
- Swallowing the batteries may lead to serious injury or death. Seek immediate medical attention if batteries are ingested.
- Clean batteries and battery contacts with a clean, dry cloth before inserting.
- Ensure the batteries are installed correctly with regard to polarity (+ and -). Batteries inserted incorrectly may cause battery leakage, which may damage the device or harm people.
- Remove batteries when they are not used for an extended period of time.
- Keep batteries out of children's reach.
- Do not charge, dismantle, throw into fire, or short-circuit the batteries.
- If a battery has leaked, avoid contact with skin, eyes, and mucous membranes. Promptly rinse any affected area with water and seek medical assistance.
- Do not mix old and new batteries.
- Always use the same type of batteries. Do not mix alkaline, standard (Carbon-Zinc), or rechargeable (Nickel Cadmium) or (Nickel Metal Hydride) batteries.

CLEANING AND MAINTENANCE:

- Regularly clean the solar panel with damp clean cloth, to ensure optimal performance and battery charging.
- Never use a cleaner with chemicals, solvents, or harsh abrasives to clean the product.
- To properly charge the battery, place the lights in an area where the solar panel is exposed to direct sunlight.

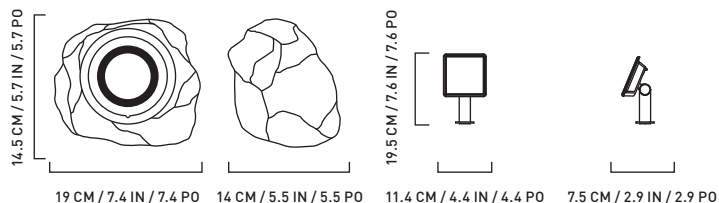
PACKAGE CONTAINS:

Please lay out all parts and read the instructions prior to installation.



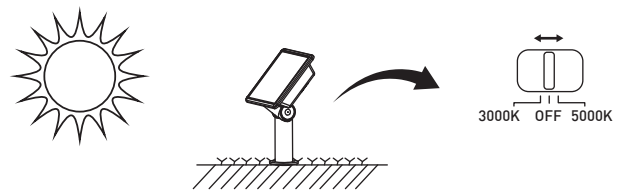
PRODUCT SPECIFICATION:

1. Solar Powered only
2. Light Output: 50 lm (total) when battery is fully charged (25 lm per light.)
3. Color Temperature: 3000K / 5000K
4. Operating Temperature: 0° C - 40° C / 32° F - 104° F
5. Battery type: 1 x 18650 Li-ion battery, 3.2 V, 1500 mAh
6. Battery Run Time: Up to 8 hours on a full charge

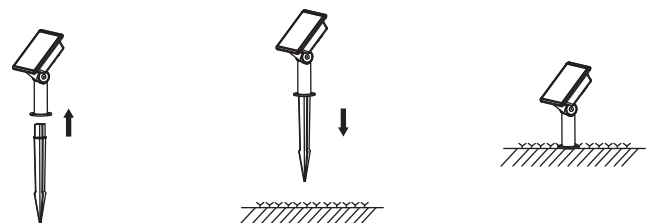


OPERATIONAL PROCEDURES:

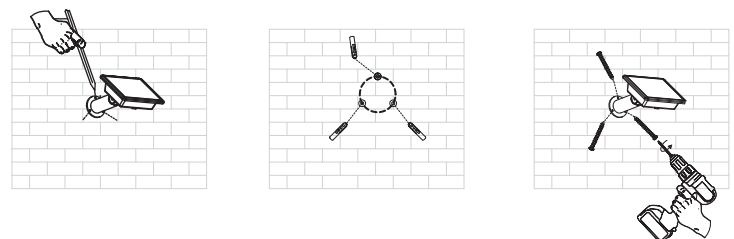
- To properly charge the battery, place the light in an area where the solar panel will be exposed direct to sunlight.
- Fully charge the battery for one full day prior to the first use.
- Slide the selector switch on the back of the solar panel to turn the light ON and OFF.
- Slide the selector switch to set either Warm White (3000K) or Cool White (5000K).
- The light will automatically turn ON as evening approaches and OFF as sunlight is detected.



• Ground installation

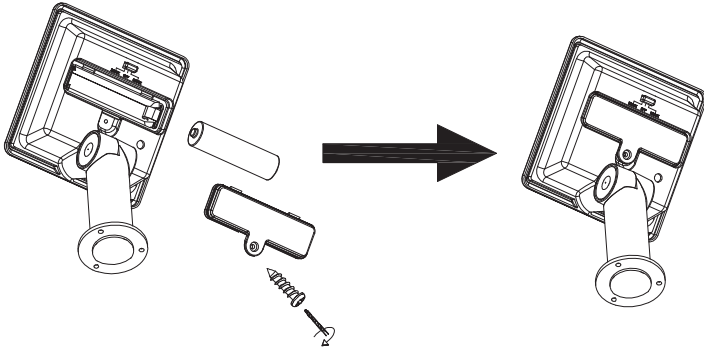


• Wall mount



BATTERY REPLACEMENT:

The battery is located on back of the solar panel.
 Slide the selector switch to the OFF position on the light prior to opening the battery housing.
 Remove the screw to reveal the battery.
 When replacing the battery, observe the correct polarity and match the battery specifications with the batteries being removed.
 Only use rechargeable batteries.
 After replacing the battery, install the screw.



5

TROUBLESHOOTING:

Problem	Possible Cause	Solution
The light does not turn on at night	The switch is not turned on.	Slide selector switch (back of solar panel) to either 3000K or 5000K setting, and charge the light with direct sunlight.
	The solar panel is installed close to other light source, so the solar light does not turn on automatically at night.	Move the solar panel away from the other light source during the night.
The light turns off quickly after dusk.	The battery is not fully charged.	Ensure the solar panel is placed in an area where it can receive the maximum amount of sunlight during the day. Also, keep the solar panel clean for maximum charging performance.
	The battery is old.	Replace the old battery with a new lithium battery, type 18650, 3.2V.

6

WARRANTY:

This KODA product carries an 18-month warranty against defects in workmanship and materials subject to the conditions and additional warranty information available at: www.kodabuilt.com/warranty

DISCLAIMER OF WARRANTIES, INCLUDING WARRANTY OF MERCHANTABILITY AND WARRANTY OF FITNESS FOR PARTICULAR PURPOSE: EXCEPT AS SPECIFICALLY SET FORTH HEREIN, NO WARRANTY OR REPRESENTATION, EXPRESS OR IMPLIED, IS MADE AS TO THE SOLAR LED ROCK SPOT LIGHT. KODA AND/OR ITS AFFILIATES EXPRESSLY DISCLAIMS, WITHOUT LIMITATION, ANY STATUTORY WARRANTIES AND ALL IMPLIED WARRANTIES, INCLUDING ANY IMPLIED WARRANTY OF MERCHANTABILITY OR FITNESS FOR A PARTICULAR PURPOSE.

SOLAR LED ROCK SPOT LIGHT

Model: LM030367

Responsible Party:

KODA

Address: 2975 Red Hill Ave., Ste. 100, Costa Mesa, CA 92626, USA

Tel: 1-866-294-9244

MADE IN CHINA

COSTCO WHOLESALE JAPAN LTD.
 2 KAKUCHI, 2 GAIKU, KANEDA-NISHI
 361 URUKURA, KISARAZU SHI
 CHIBA, 292-0007 JAPAN
 0570-200-800
 WWW.COSTCO.CO.JP

Have a comment or question? Email us at info@kodabuilt.com or visit us online at www.KodaBuilt.com

KODA™

A Horizon Brands Company
 2975 Red Hill Ave., Ste. 100, Costa Mesa, CA 92626, USA | Tel: 1-866-294-9244
 © 2023 Koda. All rights reserved.

7

ML-030367_V1