

THE COMMONWEALTH OF MASSACHUSETTS  
EXECUTIVE OFFICE OF ENERGY AND ENVIRONMENTAL AFFAIRS



Department of Agricultural Resources  
251 Causeway Street, Suite 500, Boston, MA 02114  
617-626-1700 fax: 617-626-1850 www.mass.gov/agr



CERTIFICATE  
OF  
INDUSTRIAL HEMP

*Issued to:*

Licensee Name: **Heritage Hemp**  
License No.: **MA20180008D**

*Certified to contain less than 0.3% Δ-9 Tetrahydrocannabinol (THC) in accordance with  
M.G.L. c. 128, Section 116.*

*This Certificate must stay with the Crop at all times and accompany all shipments of the Crop,  
including any portion, so that anyone coming into contact with the Crop has access to written  
documentation demonstrating that this Crop has been grown in compliance with M.G.L. c. 128,  
Sections 116 through 123 and contains less than 0.3% delta-9 Tetrahydrocannabinol (THC).*

*This Certificate applies only to the Sample ID information set forth herein below and shall not  
serve to certify any other portion of Licensee's crop.*

Certificate No.: **MA19IHC000837**  
Variety: **T1**  
Total THC: **0.202%**  
Sample Date: **09/19/2019**  
Sample ID: **RLG091919000808**  
Date Issued: **10/23/2019**

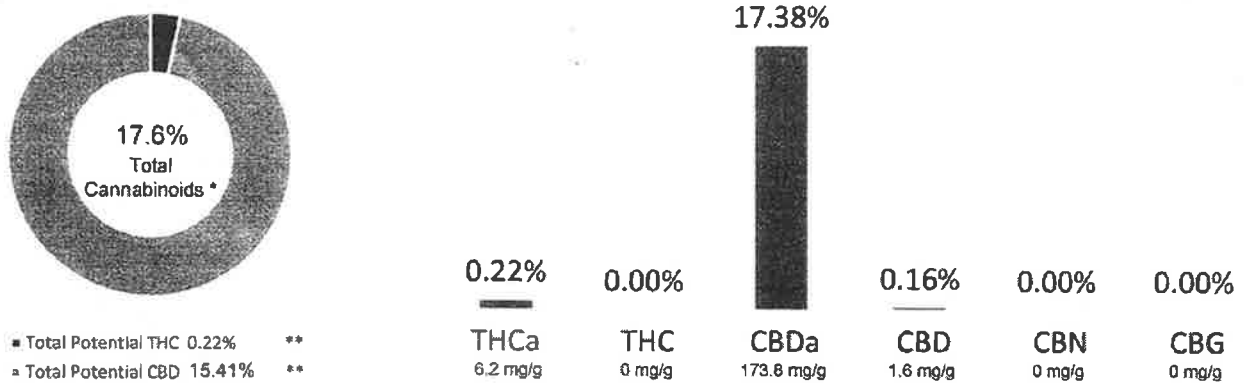
Authorized by: \_\_\_\_\_

  
Commissioner

ACDC x Harletsu

<b>Batch ID:</b>	N/A	<b>Test ID:</b>	8445126
<b>Reported:</b>	12-Dec-2018	<b>Method:</b>	TM01
<b>Type:</b>	Plant		
<b>Test:</b>	Potency		

### CANNABINOID PROFILE



\* Total Cannabinoids result reflects the absolute sum of all cannabinoids detected.  
 \*\* Total Potential THC/CBD is calculated using the following formulas to take into account the loss of a carboxyl group during decarboxylation step  
 Total THC = THC + (THCa \* (0.877)) and Total CBD = CBD + (CBDa \* (0.877))  
 % = % (w/w) = Percent (Weight of Analyte / Weight of Product)

NOTES:  
 Free from visual mold, mildew, and foreign matter.

### FINAL APPROVAL

 <b>Greg Zimpfer</b> 12-Dec-2018 12:01 PM	 <b>David Green</b> 12-Dec-2018 12:17 PM
PREPARED BY / DATE	APPROVED BY / DATE

Testing results are based solely upon the sample submitted to Botanacor Services, LLC, in the condition it was received. Botanacor Services, LLC warrants that all analytical work is conducted professionally in accordance with all applicable standard laboratory practices using validated methods. Data was generated using an unbroken chain of comparison to NIST traceable Reference Standards and Certified Reference Materials. This report may not be reproduced, except in full, without the written approval of Botanacor Services, LLC. ISO/IEC 17025:2005 Accredited A2LA Certificate Number 4329.02

