

ACCESS DIAGNOSTIC TESTS UK

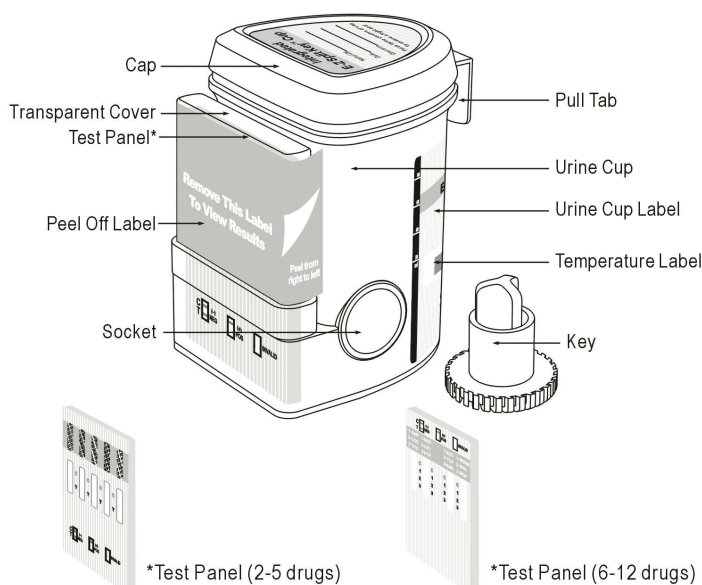
www.ukdrugtesting.co.uk

Thank you for purchasing a rapid drug test kit. Please read the following advice before proceeding with your tests.

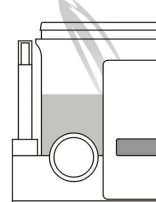
Do not open the foil wrapped kit until the time you want to proceed with the test.
To perform a test, you will need a fresh urine sample.

Integrated E-Z Split Key™ Cup

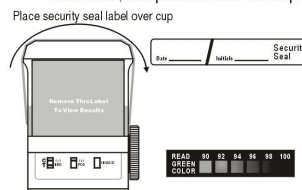
Procedure



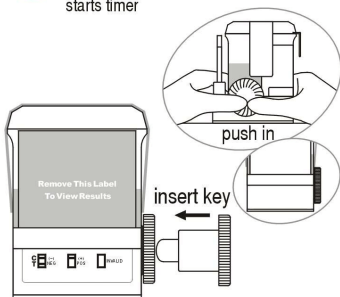
1 Donor removes Cap with Pull Tab, provides specimen and secures Cap by pressing down on all three corners.



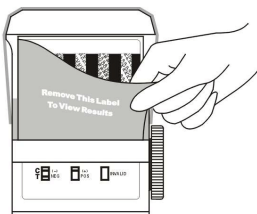
2 Technician reads green color on the Temperature Label up to 4 min. after specimen collection. Proper range is 90-100°F. Technician checks Cap for a tight seal, dates and initials the Security Seal Label, and places it over the Cap.



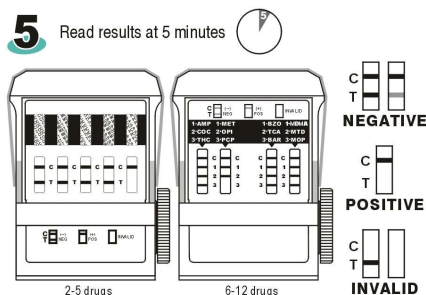
3 On a flat surface, technician inserts Key into Socket, pushes in to begin test, and starts timer



4 Remove the Peel off label



5 Read results at 5 minutes



Example: tests show positive for PCP
All positive results are presumptive and should be confirmed by an alternative method (e.g. GC/MS)

READ THE RESULTS AT 5-10 MINUTES

FAINT T LINES = NEGATIVE

DO NOT READ AFTER 10 MINUTES

AMP = Amphetamine COC = Cocaine (&Crack) MET = Methamphetamine MOP/R = Heroin (& opiates) THC = Cannabis (marijuana, THC) BZO = Benzodiazepines MTD = Methadone PCP = PCP BAR Barbiturates
MDMA= Ecstasy BUP = Buprenorphine TCA tri-Cyclic Antidepressants
KET = Ketamine K2/K3 = synthetic cannabis MEP = Mephedrone COT = Cotinine(Nicotine) DOX= Oxycodone
FOR ADVICE ON RESULTS CALL 01263 731168 MON- FRI 9am – 4pm