



## DSD 843-853-863 D Multi-Drug Rapid Test Direct (Oral Fluid) Instructions (No Indicator. 2 or 3 columns)

### Test and abbreviation codes and Cut-off (ng/mL)

Amphetamine (AMP) 50ng/mL, Marijuana (THC) 12ng/mL, Cocaine (COC) 20ng/mL, Opiates (OPI) 40ng/mL, Methamphetamine (MET) 50ng/mL, Benzodiazepines (BZO) 30ng/mL, Phencyclidine (PCP) 10ng/mL, Oxycodone 20ng/mL (OXY), Ketamine 50ng/mL (KET), Methadone 30ng/mL (MTD), Tramadol 30ng/mL (TML), Synthetic cannabis 25ng/mL (K2), Fentanyl 20ng/mL (FYL). (MDMA) Ecstasy 50ng/mL

#### [DIRECTIONS FOR USE]

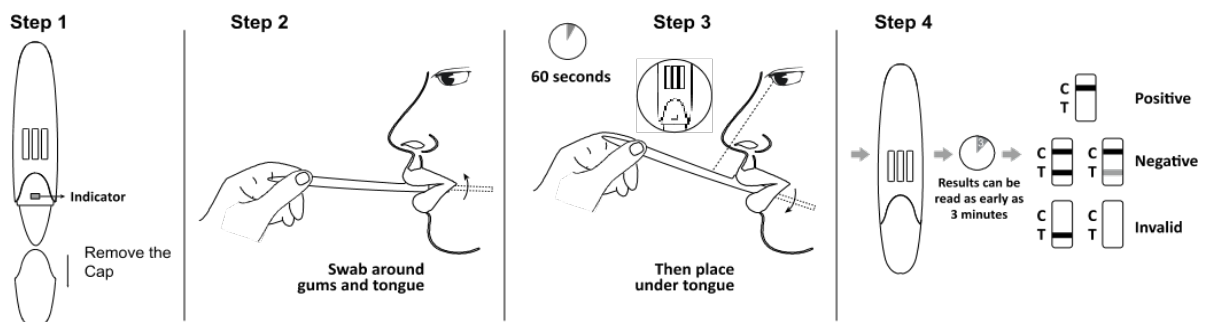
**Allow the test Device to reach room temperature (15-30°C) prior to testing. Instruct the donor to not place anything in the mouth including food, drink, gum or tobacco products for at least 10 minutes prior to collection.**

1. Remove the test from the sealed pouch and use it within one hour.
2. Take off the device cap and collect oral fluid from the mouth as follows.

**Important:** Move your tongue against the upper and lower jaws and teeth to enrich the oral fluid. Insert absorbent wick end into the mouth, actively swab around the gums on both sides of the mouth (10-15 times) then put the absorbent wick under the tongue to collect oral fluid, move around the mouth periodically and leave in the mouth until you can see the c lines appear. This can take several minutes. Replace cap and place the test device on a clean and level surface.

3. Read the test result at **3-10 minutes**.

If all lines are clearly visible at 3 minutes or sooner then the test can be interpreted as negative and discarded. If any lines are not visible at 3 minutes, then the test should be re-read at 10 minutes.



### 【INTERPRETATION OF RESULTS】

**NEGATIVE:**\* A coloured line appears in the Control region (C) and a coloured line appears in the Test region (T 1 and 2 and 3). This negative result means that the concentration in the oral fluid sample is below the designated cut-off levels for a particular drug tested.

**\*NOTE:** The shade of the coloured line(s) in the Test regions may vary. The result should be considered negative whenever there is even a very faint line.

**POSITIVE:** A coloured line appears in the Control region (C) and NO line appears in the Test region. The positive result means that the drug concentration in the oral fluid sample is greater than the designated cut-off for a specific drug.

**INVALID:** No line appears in the Control region (C). Insufficient specimen volume or incorrect procedural techniques are the most likely reasons for Control line failure. Read the directions again and repeat the test with a new test. If the result is still invalid, contact [www.ukdrugtesting.co.uk](http://www.ukdrugtesting.co.uk) TEL: 01263 731168 (Mon-Fri 8.30am -5pm)

The Multi-Drug Rapid Test Midstream provides only a qualitative, preliminary analytical result. A secondary analytical method must be used to obtain a confirmed result. (GC/MS) is a preferred confirmatory method. See [www.ukdrugtesting.co.uk](http://www.ukdrugtesting.co.uk) for information.