

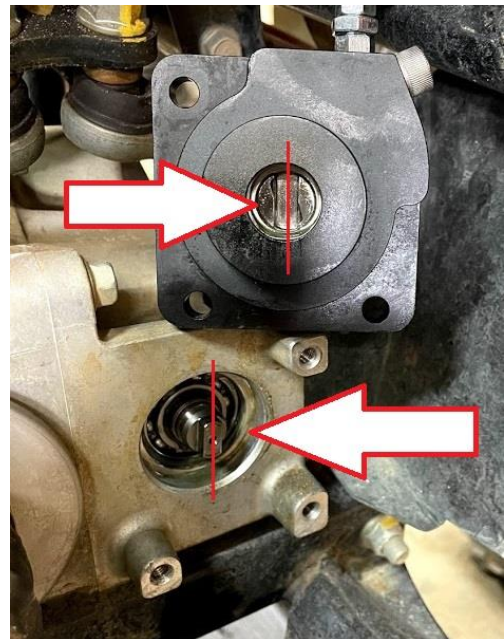
Installation instructions for the Knight Sure 4 with Side Shifter with Low Gear

Note: These are the shortened instruction explaining only the assembly of the unique Knight Sure 4 components. For detailed instructions please go to www.KnightATV.com then navigate to the description of the product you purchased where you will find a video link. Those videos show every detail, step by step instructions, from removing the seat to how to remove a push fastener. If you still have questions feel free to call us at 732-737-7761.

- 1) Remove the seat, center plastics, left footwell and front left fender.
- 2) Unplug and remove the electronic actuator:



- 4) Rotate the shaft in the differential clockwise as far as it will go, do not force it, then rotate it CCW a little so it is vertical which will match the manual actuator:



- 3) Screw the pull cable into the manual actuator and put the ball of the cable into the pulley:



- 5) Put the O-ring on the actuator and mount it onto the differential using the new M6 screws provided, these are in the bag with the O-rings:



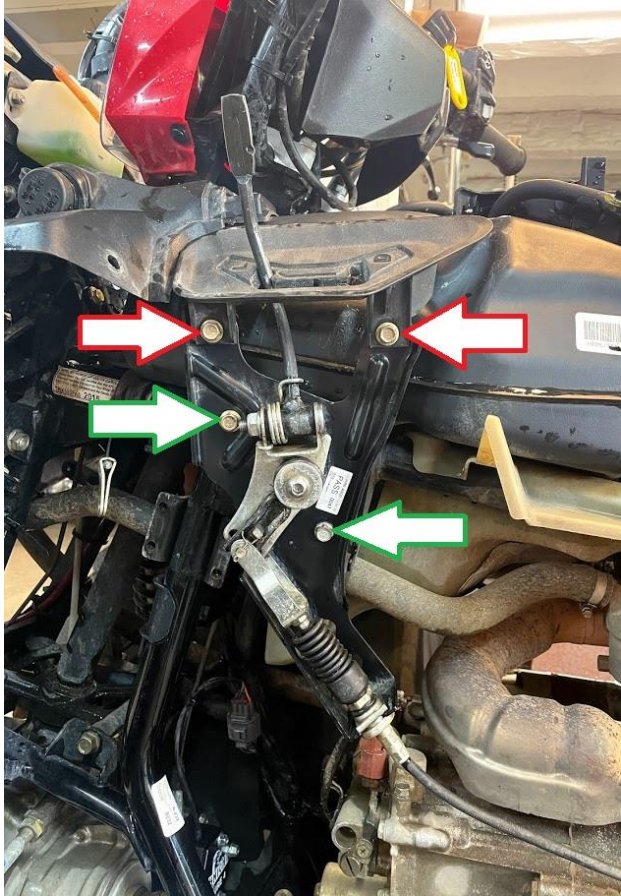
- 6) Route the other end of the pull cable over the frame, just in front of the gas tank:



- 7) Install the thin frame bracket using one 1/4-20 screw to hold the back side together, then unscrew one of the nuts on the cable and push the cable through the slot in the metal brackets. Use the two nuts on the cable to tighten the bracket to the frame, do not over tighten these. Screw in the 1" long 10/32 screw so it is pinned against the frame, this will hold the bracket from rotating, do not over tighten:



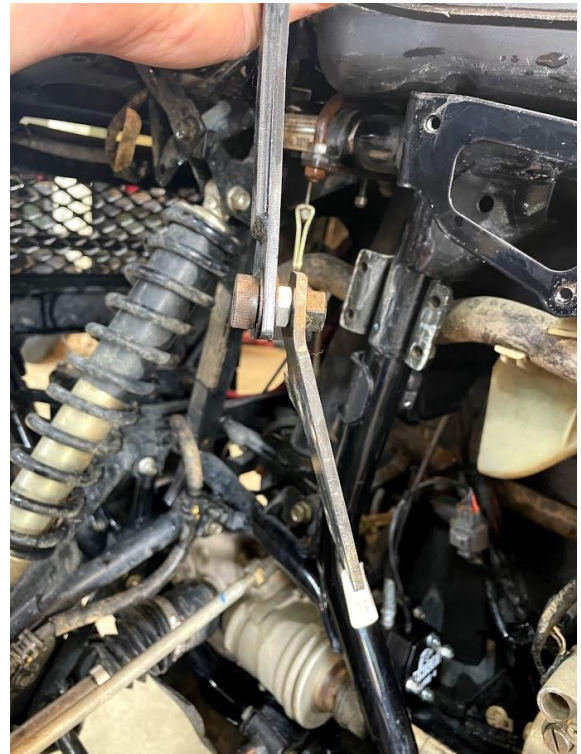
- 8) Remove the rubber knob from the Low gear shifter, it pulls off. Remove the two screws holding the plastic Low gear shift guide to the bracket, you can discard this plastic shift guide and screws. Remove the Low gear bracket, save the two screws, you will reuse them:



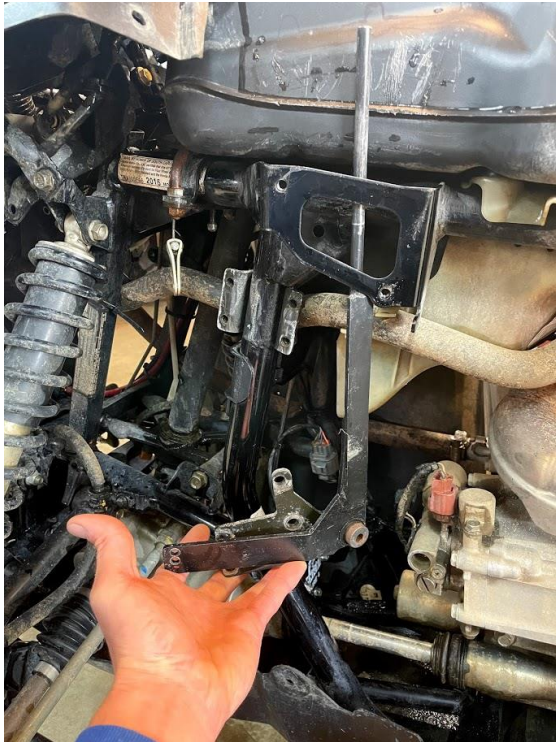
- 9) Put the larger U bracket around the frame, if it is loose, stick the supplied strip of rubber to it:



- 10) Screw the long lever onto the lever bracket before mounting the lever bracket:



- 11) Slide the lever between the Low gear bracket and the gas tank:



- 12) Use the plastic push fastener to align the lever bracket with the frame and hold it in place. Then screw in the four 1/4-20 screws and tighten them evenly:



- 13) Attach the cable to the shift lever. Using the 10-32 x 1" long screw put a washer on it, then slide it through holes on the bracket on the end of the cable. Next put a washer on and then a nut, put this nut on so the flange is facing the end of the screw, slide the bolt through the shift lever bracket and then put the other nut on the screw. Tighten the nuts so the screw is flush with the end last nut. This is what the assembly will look like:



- 14) Put the Low gear shifter back onto the frame reusing the screws:



- 15) Attach the Shift Guide brackets to the Low Gear shifter using the new supplied screws, do not tighten these screws yet:



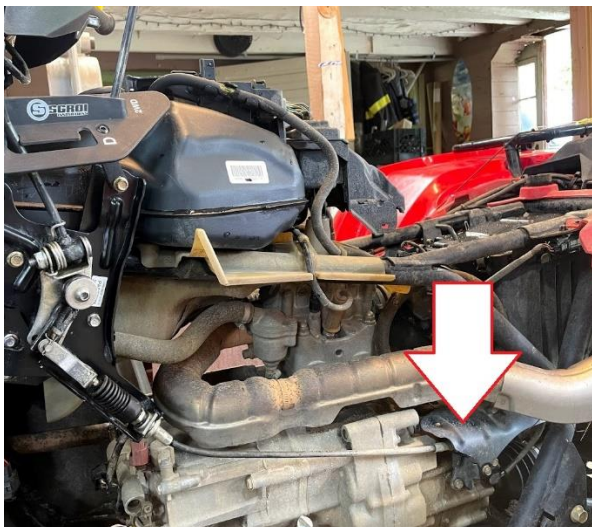
- 16) Install the plastic shift guide using the 3 button head screws, tighten these down evenly so the brackets are flat against the shift guide. Then tighten the bracket screws:



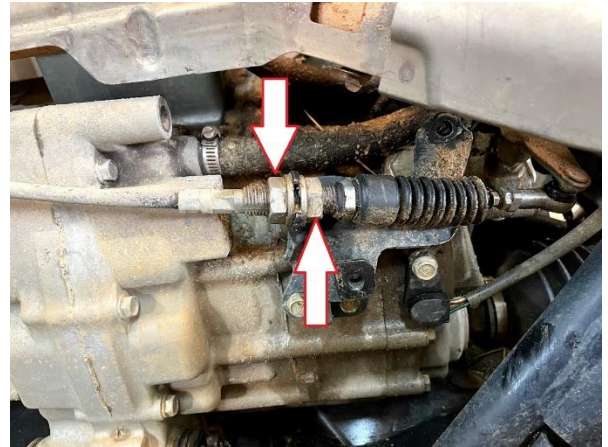
- 17) The Low Gear cable will now need to be adjusted, shift into L (if you can) and adjust the nuts on the shaft at the base of the cable bracket. Lower these nuts so they are as close to the cable as possible:



- 18) At the other end of this cable is a metal cover, remove the two screws holding it on and remove this cover:



- 19) Adjust these two nuts on this cable so the Low gear shifter will shift between L and D:



- 20) Put the cover back over the pull cable.
21) Put the shift knob on the shaft by pushing down on the top of the shifter and screw it to the lever using the supplied screw:



22) Shift into 4wd by squeezing the lever, the bottom will lift up and then you can push the lever into the 4wd position, do not force it! If it will not move all the way you must raise the front wheels off the ground and rotate the wheel while pushing on the lever. This action gets the gears inside the differential to move and line up so they can slide together. This same action is needed to shift into diff lock. Never force the lever!



24) Shift into diff lock, if it will not move all the way you must raise the front wheels off the ground and rotate the wheel while pushing on the lever. This action gets the gears inside the differential to move and line up so they can slide together. Do not force the lever. This is the shifter position and actuator position when in diff lock:



23) Unscrew the adjuster on the actuator until the notch marks line up. Only make adjustments when the lever is in the 4wd position. This is the 4wd position:



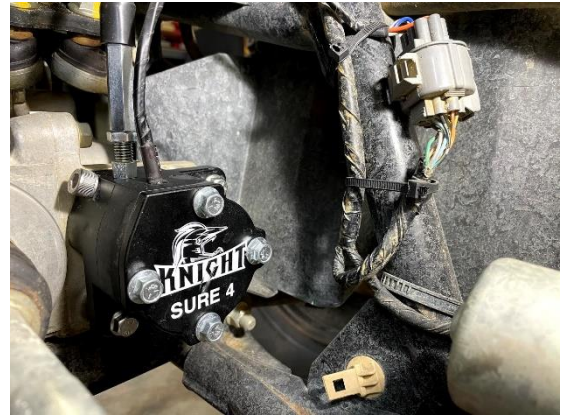
- 25) Tighten the lock nut against the adjuster on the cable. If you did not purchase the Display Lights Upgrade Kit, put the O-ring on the lid and screw it on. Plug the 10-pin connector into your wire harness and skip to step 31.
- 26) Shift back into 2WD, rock the wheel back and forth so the gears inside the differential slide apart and the actuator rotates back to the 2wd position.
- 27) Put the O-ring on the switches housing then rotate the flat blade on the switches housing clock wise until it stops, then rotate it back CCW just a little so it lines up with the slot in the actuator.



- 28) Push the switches housing onto the actuator so the flat blade in the switches housing slides into the slot in the actuator.



- 29) Put the O-ring on the lid and screw the lid and switches housing onto the actuator using the long 1/4-20 screws provided.



- 30) Plug the 10-pin connector into the wire harness where the electric actuator used to be connected to.
- 31) Lower the ATV back onto the ground.
- 32) Follow the wires from your electric 4wd button to below your front plastics.
- 33) Unplug your 4wd switch from your main wire harness and plug in the supplied connector. These can now be connected to any aftermarket items such as a light bar or rock lights. Your 4wd button and diff lock switch will activate these.



- 34) Plug in the 8-pin connector to your wire harness (If you purchased the Display Lights Upgrade Kit this connector will have a yellow wire connecting two terminals. Otherwise, all the holes are plugged)



- 35) Secure these wires and put the front plastics back in place.
36) Remove the shift knob and the shifter guide.
37) Reinstall the front left fender, left footwell, center plastics and seat.
38) Install the shift guide back into the T handle using the two button head screws.
39) Install the shift knob the same as before.

Your installation is complete! Enjoy your new Sure 4 manual 4wd kit and never worry about 4wd issues again!

For more detailed instructions, go to www.KnightATV.com then navigate to the description of the product you purchased where you will find a video link. Those videos show every detail, step by step instructions, from removing the seat to how to remove a push fastener. If you still have questions feel free to call us at 732-737-7761.