

TOUCH PANEL DIMMER SWITCH INSTALLATION GUIDE

MODEL NO: Touch Panel ZWave Switch

III... INTRODUCTION:

The Smartlinkautomation® Touch Panel dimmer Switch operates independently or as part of a Smartlink Automation home automation system or with any certified Z-Wave home automation system. It installs in a standard BS 2 gang box. It operates as a bi-stable Relay mode or Touch pulse mode for Scene control with load current max 8 amp each. It communicates to the Smartlink Automation system using wireless connection.

III... BOX CONTENTS:

Touch Panel Dimmer Switch

III... Warnings and considerations

A WARNING! Turn OFF electrical power before installing or servicing this product. Improper use or installation can cause SERIOUS INJURY, DEATH or LOSS/DAMAGE OF PROPERTY.

A WARNING! This device must be protected by a circuit breaker.

A WARNING! Connect only in accordance with the diagram presented in the manual. Improper connections may be dangerous.

IMPORTANT! This device must be installed by a licensed electrician in accordance with all national and local electrical codes.

III... SPECIFICATIONS AND SUPPORTED LOAD TYPES

1. The specifications are described below.

Model number	SLA-1GS
Power requirements	110-240V ~ 50-60 Hz
Power consumption standby	<0.5W
Dimensions & Load Ratings	
Dimensions(L x H x D) mm	121.5 x 80 x 31.5 mm
Load Rating	2KW
Environmental	
Operational temperature	32°F ~ 104°F or 0°C ~ 40°C
Humidity	0-40%
Storage	-4°F ~ 158°F or 20°C ~ 10°C
Wireless Specifications	
Wireless range	100m Outdoor, ~30m Indoor
Radio protocol	Z-wave
Radio signal power	max 1 mW
Radio Frequency	EU 868.4 MHz IN 865.2 MHz BR/AU 921.4Mhz

- **IMPORTANT!** If you are unsure about any part of these instructions, consult a qualified electrician.
- **IMPORTANT!** Using this product in a manner other than outlined in this document voids your warranty. Further, Smartlink Automation is NOT liable for any damage incurred with the misuse of this product.
- **IMPORTANT!** Do NOT use a power screwdriver to install this device. If you do, you may overtighten the screws and strip them. Also, overtightening the screws may interfere with proper switch operation.
- **IMPORTANT!** This is an electronic device with intricate components. Handle and install with care!
- Smartlink Automation products based on Z-Wave technology provides many advantages when compared to similar smart Home systems.
- Z-Wave is the leading smart home technology found in millions of products around the world. It is a wireless mesh technology that will not interfere with your Wi-Fi signal and operates on low power. When Z-Wave technology is utilized inside everyday products such as locks and lights, these products become " smart " - giving them the ability to talk to each other and enabling you to control the devices and thus your home, from anywhere.
- Z-Wave is a wireless radio frequency technology that lets smart devices talk to and connect with one another. Household products, like lights, door locks and thermostats are made "smart" when Z-Wave connectivity is added inside the product's design, giving them the capability to communicate and perform the desired functions that you want.
- Z-Wave operates wirelessly and securely. The devices can be easily accessed and controlled remotely on your smartphone, tablet or computer so you can control your smart home from anywhere in the world! The Z-Wave hub receives a command from you via your smartphone, tablet, or computer and routes the command to the destination device.

III... INSTALLATION INSTRUCTIONS

1. Ensure that the location and intended use meet the following criteria:

- Do not exceed the load capacity requirements of the Touch Panel Switch. Refer to the load ratings in the specifications above for details.
- Install in accordance with all national and local electrical codes.
- The range and performance of the wireless control system is highly dependent on the following: (1) distance between devices; (2) layout of the home; (3) walls separating devices; and (4) electrical equipment located near devices.

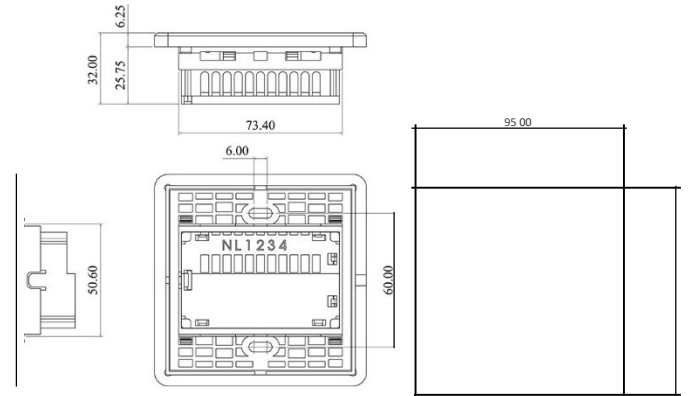
2. Turn *off* the local electrical power by either Switching *off* the circuit breaker or by removing the fuse from the fuse box. To ensure the wires do NOT have power running to them, use an inductive voltage detector.

0 NOTE: The back box wiring shown in this document is an example. Your wire colors and functions may differ. If you are not sure which wires are the Line In/Hot, Neutral, Load, Traveler, and Earth Ground wires, have a trained electrician perform the installation.

3. Please note that the product operates with 150V-230VAC/50Hz, and it is necessary to have enough "live" wire and the "neutral" wire for an effective installation.

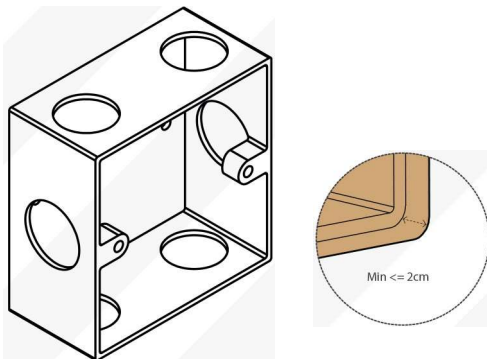
4. The distance between 2 switch boxes should be at least more than 4cm both horizontally and vertically. The distance between switch box to wall surface should be minimum 2cm. Do not install the device in and near regions of high humidity.

iii... DIMENSIONS

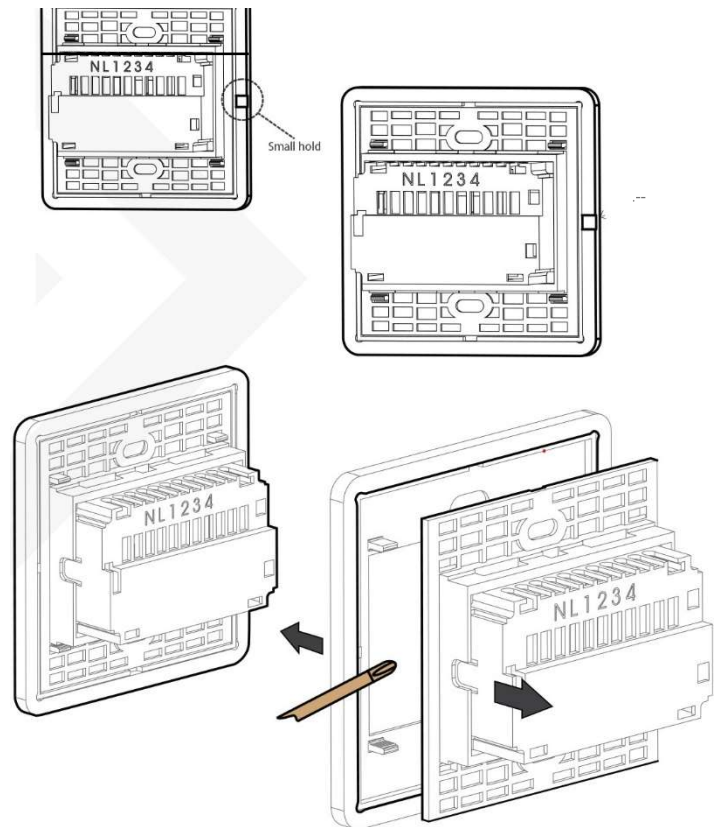


T

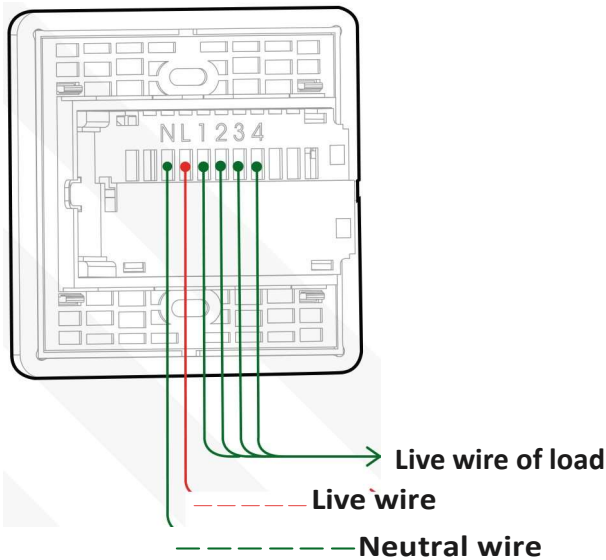
5. The depth from the junction box to the wall surface should be about 2cm



6. Remove the glass panel using a tool as shown below.



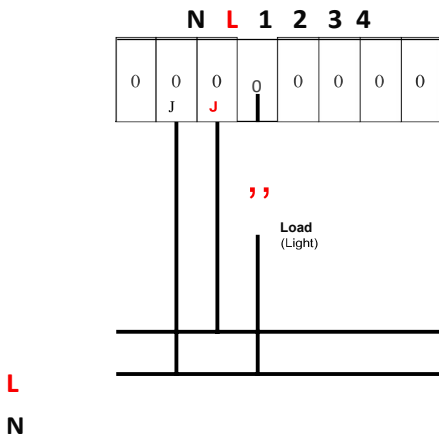
7. The maximum load for each channel is 700W (9Bulk) and 150W (LED, CFL)
8. Smartlink Automation Touch Panel Switch is designed to operate in a wall switch box of dimensions 161x101mm
9. Prepare each wire. Wire insulation should be stripped back 5/8 of an inch from the wire end.
10. Identify and connect wires according to the physical marks on panel
11. Touch Panel Switch, see the appropriate wiring diagram below. Live wire to L terminal.
Neutral wire to N terminal
Live wire of load to 1,2,3,4 terminal, Neutral wire of load to N terminal.



IMPORTANT! Not grounding this product, as described in the section "Warnings and Considerations," may result in an installation less immune to damage caused by electrical disturbances, such as ESD or lightning, and may void the warranty.

12 Identify and connect the Touch Panel Dimmer Switch wires to the back box wires using the wire nuts.

- **IMPORTANT!** Dimmer wiring is same as one button switch.

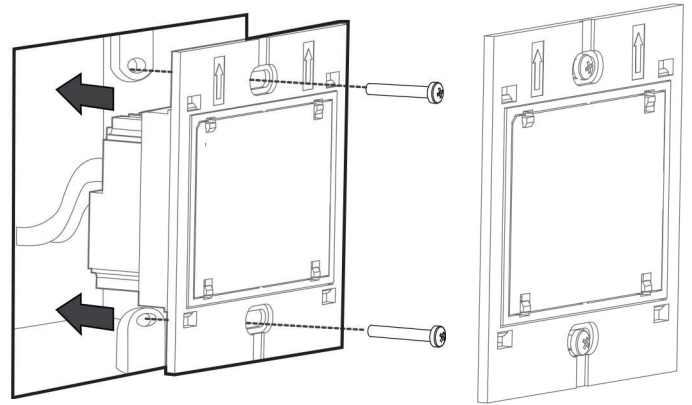


Switch 1button dimmer

0 TIP: If you are using a Smartlink Automation push-on (screw less) faceplate in a multi-gang installation, attach the black faceplate sub-plate to all of the devices that will be installed into the wall box prior to attaching the devices to the wall box. This will help ensure that all the devices are properly aligned and on the same plane after installation.

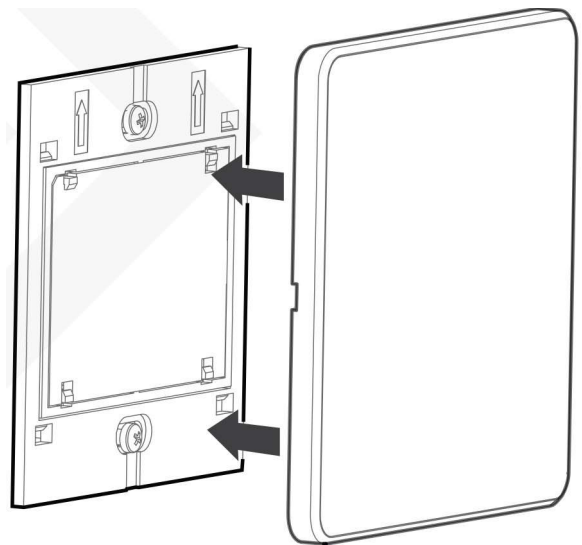
13. Fit the wires back into the back box. Bend the wires in a zigzag pattern

14. Align the Touch Panel Switch to the back box and fasten it with screws. Tighten the screws until the back side of the yoke plate is even with the wall surface, but no further. Overtightening can warp the device and cause mechanical malfunction.



15. Install the Smartlink Automation Touch Panel Faceplate as shown below. Care should be taken while applying force to avoid any damage to the glass frame faceplate.

16. Turn ON power at the circuit breaker



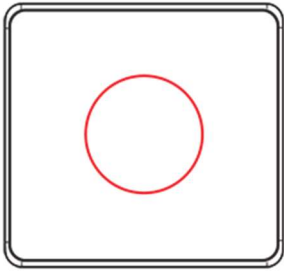
lit... OPERATION AND CONFIGURATION

On initial power up, all status LEDs on the Touch Panel Switch will blink for 4 times in and come to stable blue indicating device boot up and ready for use.

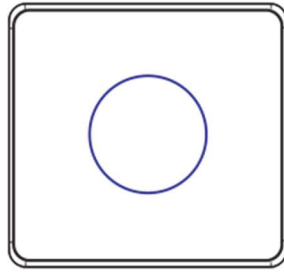
To operate this Touch Panel Switch:

1. For ON/OFF, Touch the button. Red is ON, Blue is OFF

so that they easily fold into the backbox.

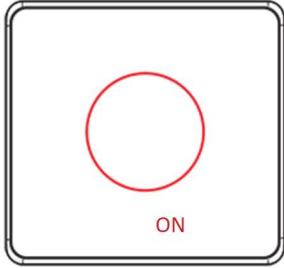


ON

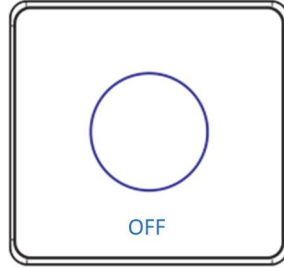


OFF

2. For Dimmer: Touch to the center of button to ON/OFF

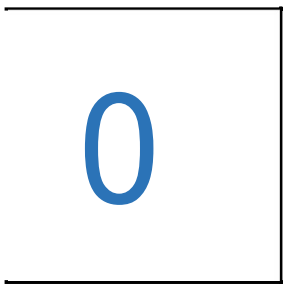


ON

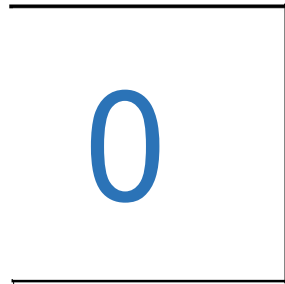


OFF

3. Track/Swipe Clockwise along the border of the touch area to increase.
Track/Swipe Anticlockwise along the border of the touch area to decrease.



increase



decrease

0

Note: Touch areas are inside the circle

iii... TROUBLESHOOTING

If the light does not turn on:

- Ensure at least one LED on the face of the Touch Panel Switch is lit.
- Ensure the light bulb is not burned out and is screwed in tightly.
- Ensure that the circuit breaker is not turned OFF or tripped.
- Check for proper wiring (see "Sample Wiring Configurations").
- For help on the installation or operation of this product, email or call the Smartlink Automation Technical Support Center. Please provide your exact model number.

iii... CARE AND CLEANING

- Do NOT paint the Touch Panel Dimmer Switch or its wall plate.
- Do NOT use any chemical cleaners to clean the Touch Panel Switch.
- Clean surface of the Touch Panel Dimmer Switch with a soft damp cloth as needed.

iii... REGULATORY /SAFETY INFORMATION

To review Regulatory information for your particular Smartlink Automation products, see the information located on the Smartlink Automation website at: <http://www.Smartlinkautomation.com/>.

iii... ABOUT THIS DOCUMENT

Copyright ©2023 Smartlink Automation. All rights reserved. Smartlink Automation, the Smartlink Automation logo, the Smartlink Automation emblem logo and the Smartlink Automation certified logo are registered trademarks or trademarks of Smartlink Automation Corporation in Australia and other countries. All other names and brands may be claimed as the property of their respective owners. Specifications are subject to change without notice.

