

VERUS™ SURROUND DIPOLE/BIPOLE SPEAKER

Owner's Manual

An electronic copy of this manual can be downloaded from www.aperionaudio.com.
© 2011 Aperion Audio. All Rights Reserved. Version 1.0.

Aperion Audio - 18151 SW Boones Ferry Road, Portland OR 97224 - 888.880.8992

Features, Specifications, and Connections

Congratulations!

You’re just moments away from experiencing your new Aperion Verus™ Surround Speakers. We’re honored that you chose Aperion Audio to bring your music and movies to life! Feel free to contact us if you have any questions or need some setup advice. Above all, Enjoy!

-The Aperion Audio Team

Features

- Dual (1) Custom 4.25” Aperion PhaseSync Drivers with Integrated 1” ASR Tweeters
- Furniture-Grade Finish
- 5-Way Gold-Plated Binding Posts
- Ported, Anti-Resonant Cabinet
- Acoustically Transparent Metal Grille

Package Contents

- Two (2) Aperion Verus™ Surround Speakers
- Wall Mounting Brackets

Specifications

Frequency Response: (+/- 3dB) 90-18,000 Hz
(+/- 6dB) 80-20,000 Hz

Nominal Impedance: 6 Ohms

Sensitivity: Bipole: 88 dB
Dipole: 78 dB

Recommended Power: 20 - 200 Watts

Driver Configuration: 2- Way, Dipole/Bipole

Bass Alignment: Ported

Dimensions: 9.5" H x 13" W x 7" D

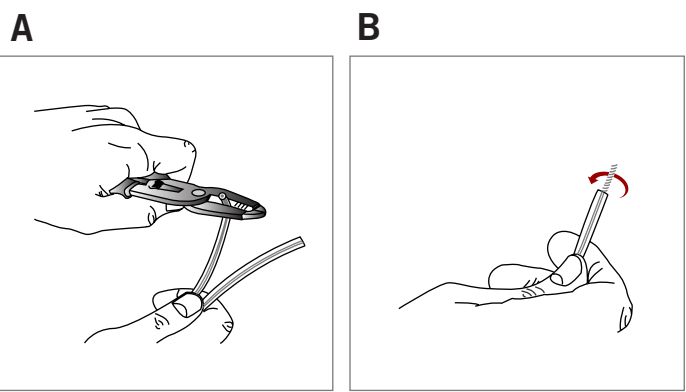
Weight: 13 lbs. (26 lbs. per pair)

Connections

To connect your speaker to your receiver you will need standard 2-conductor, stranded speaker wire.

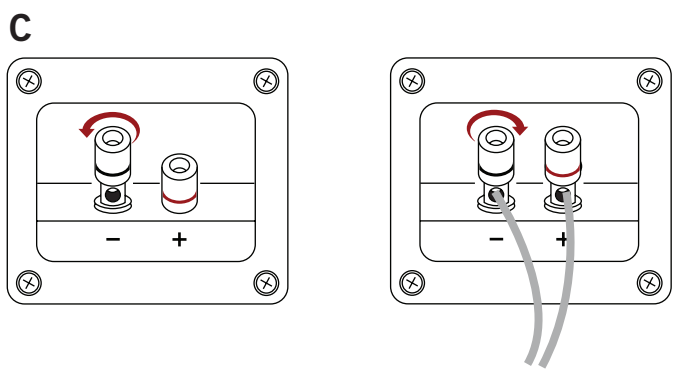
Preparing the Wire

- 1) Split the last 4” of your speaker wire into two separate strands.
- 2) Strip 1/2” of the shielding off of the end of each wire (see figure A).
- 3) Twist the exposed copper strands with your fingers until they are tightly unified. Be sure there are no “flyaway” strands (see figure B).



If You’re Using Bare Wire (Rec’d for Wall Mounting)

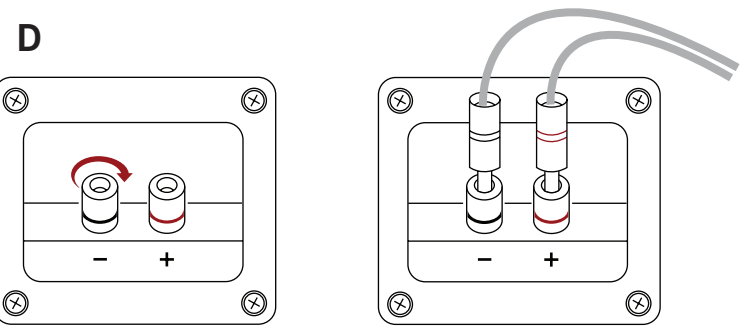
- 1) Unscrew the binding posts on the back of your speaker by turning counter-clockwise.
- 2) Insert the bare speaker wire into the hole in the binding post and tighten it securely by turning clockwise (see figure C).



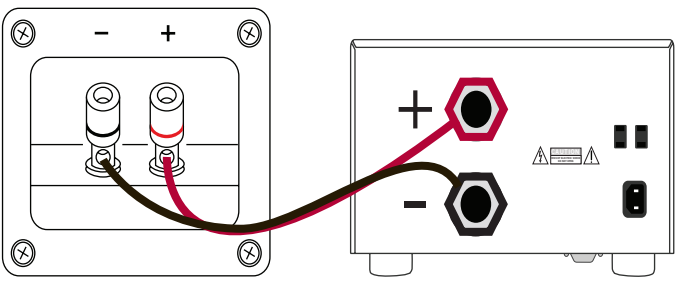
If You’re Using Banana Plugs (Rec’d for Stand Mounting)

(Note: If you are wall mounting your Verus Surround with the included mounts, you won’t be using banana plugs.)

- 1) Be sure to follow the instructions for your banana plugs to attach them to the wire.
- 2) Screw the binding posts in completely by turning them clockwise.
- 3) Insert the banana plugs into the open end of the binding post (see figure D).



Note: As you make your connections, be sure to connect the positive terminals on your receiver to the positive terminals on your speakers. Most 2-conductor wire has printing on one side to help you differentiate between the two strands.



Contact Us

If you have any questions, comments, or concerns, please don’t hesitate to contact any of our Home Theater Gurus at 888.880.8992 or through a live chat via our website at www.aperionaudio.com - we’ll be happy to help you out with anything and everything you need.

Aperion Audio

www.aperionaudio.com
customerservice@aperionaudio.com
sales@aperionaudio.com
888.880.8992

Aperion Audio Forum:
www.aperionaudio.com/community/forums

Frequently Asked Questions (FAQ)
www.aperionaudio.com/faq

Aperion University
www.aperionaudio.com/learn

Aperion Audio
18151 SW Boones Ferry Road
Portland, OR 97224

Limited Warranty

Aperion Audio provides a **transferable ten (10) year limited warranty on our speakers**; a **transferable two (2) year limited warranty on our subwoofer amplifiers**; and a **non-transferable lifetime limited warranty on our cables**. No other warranty, implied or otherwise, is created or honored by Aperion Audio. These warranties cover all defects in material and workmanship with the following specific exceptions:

- Damage caused by improper installation or adjustment
- Damage caused by accident, unreasonable use, or neglect
- Damage caused by an act of God
- Damage from failure to follow instructions contained in the Owner’s Manual
- Damage from repairs performed by someone not authorized by Aperion Audio
- Any unit on which the serial number has been effaced, modified, or removed
- Damage occurring during shipment, other than that arranged by Aperion Audio
- Units which have been altered or modified in design, appearance or construction

This warranty covers only the actual defects within the products themselves. IT DOES NOT cover costs of installation in (or removal from) a fixed installation, or normal set-up, claims based on any misrepresentation by the seller, or performance variations resulting from installation related circumstances such as signal quality, AC power or incompatibilities with other system components.

During the warranty period, Aperion Audio will, at its option, either repair the defect, or replace the defective product, or the defective parts, or components thereof with the then current product/component in use by Aperion Audio, at no charge to the owner for parts and labor covered by this warranty. If necessary repairs are not covered by this warranty, or if a unit is examined which is not in need of repair, you will be charged for the repairs and/or the examination.

If non-warranted repairs are needed, we will notify you of the estimated cost and ask for your authorization to perform said repairs. You must pay shipping charges incurred in getting your product to Aperion Audio. We will pay the return shipping charges if the repairs are covered by the warranty. Please save the original shipping cartons, as the unit MUST be returned in the original carton and packing. (Replacement cartons are available at a modest charge.)

