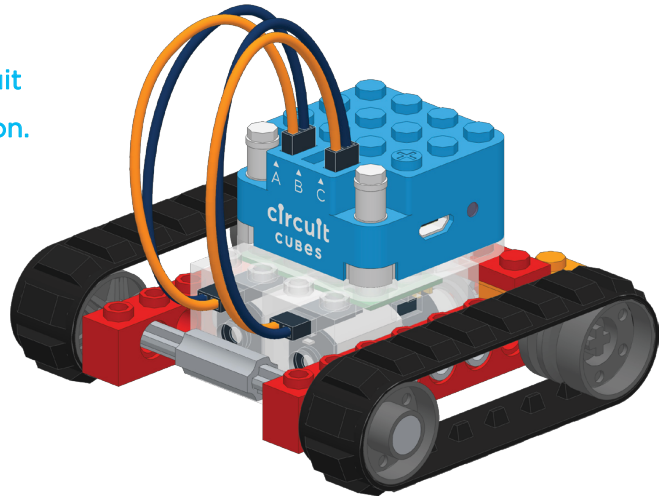
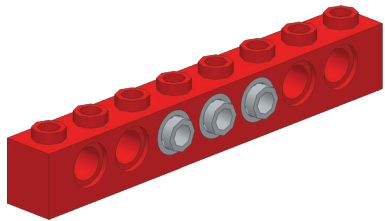


# ***XB-A1***

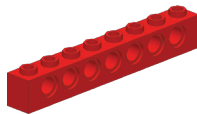
Get a grip with the rubber treads, and the adventure begins! Don't forget to download the free Circuit Cubes app to control your creation.



1



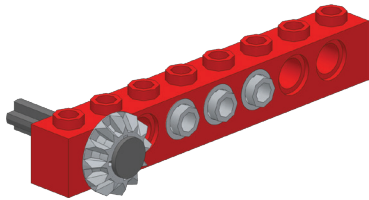
1



3



2



1



1

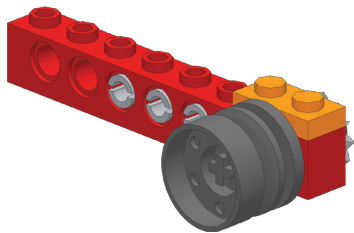


3

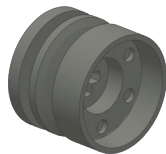
1:1 SCALE



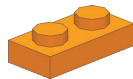
3



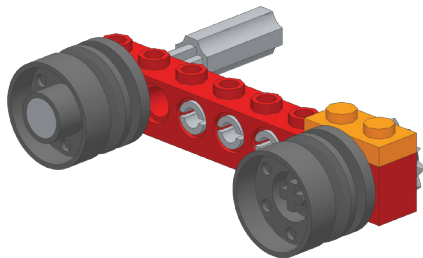
1



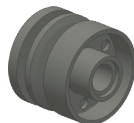
1



4



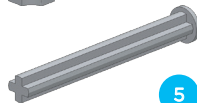
1



1



1

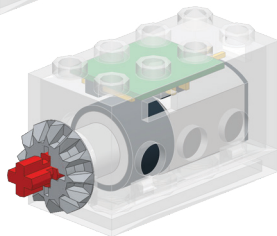
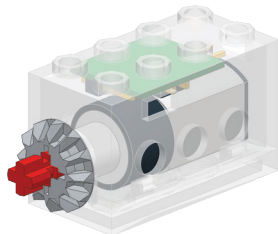


5

1:1 SCALE



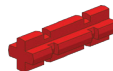
5



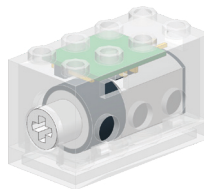
2



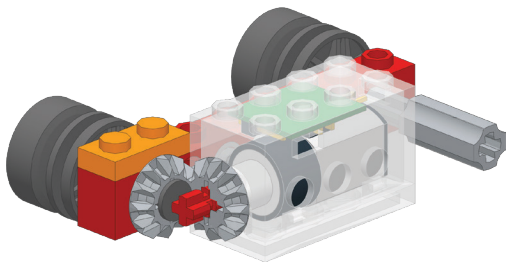
2



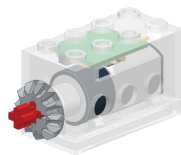
2



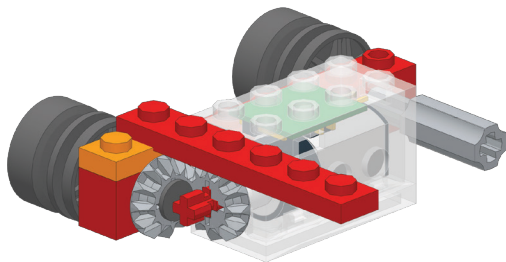
6



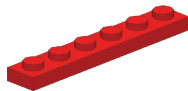
1



7

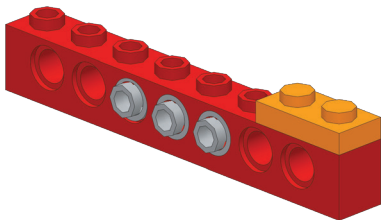


1





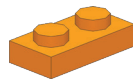
8



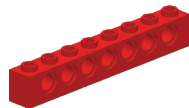
3



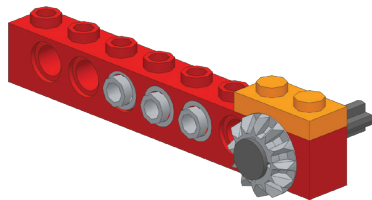
1



1



9



1



1

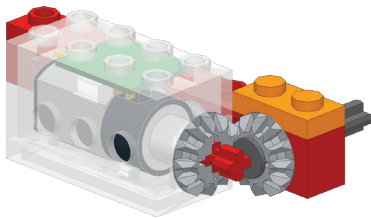


3

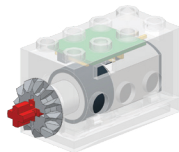
1:1 SCALE



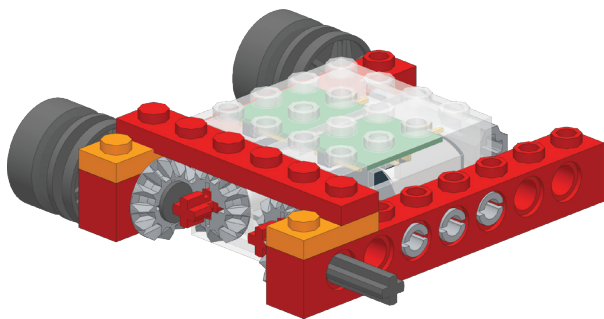
10



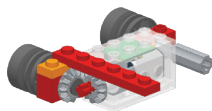
1



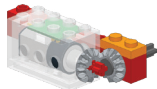
11



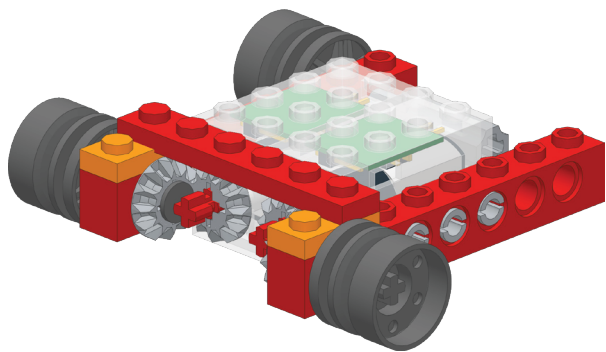
1



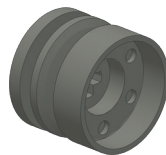
1



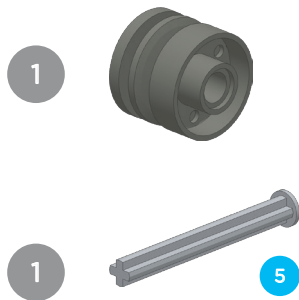
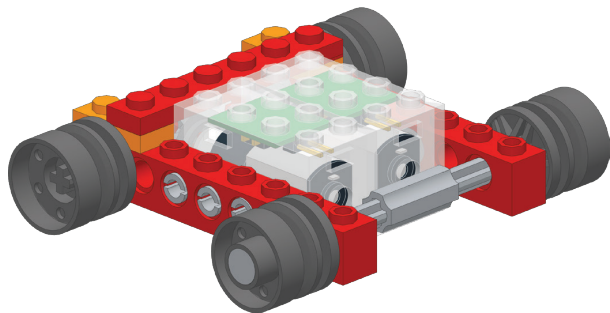
12



1



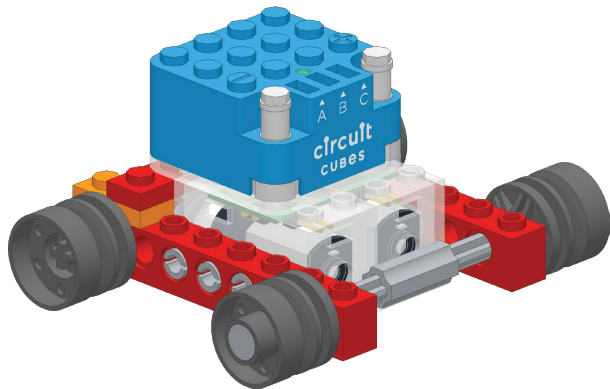
13



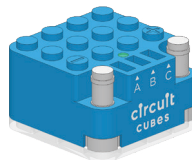
1:1 SCALE



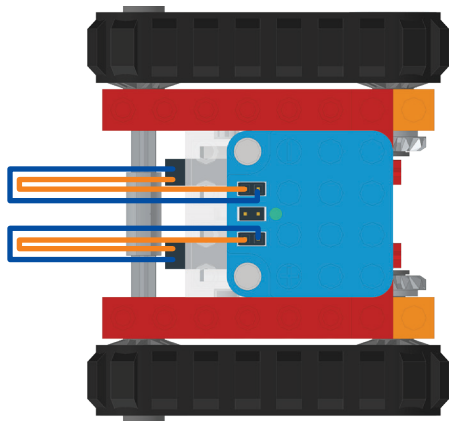
14



1



15



2



2



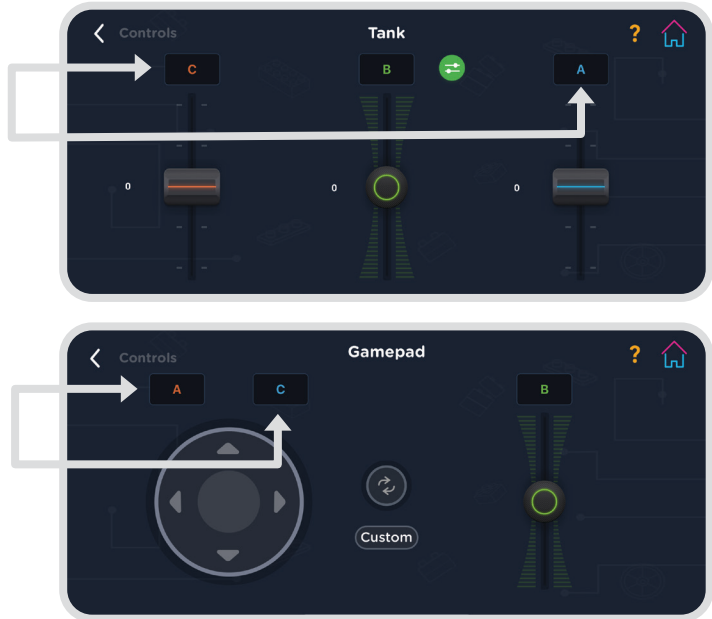


# CONTROLS

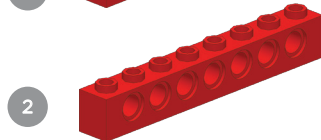
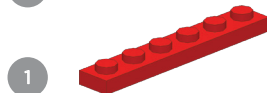
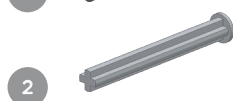
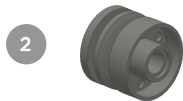
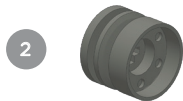
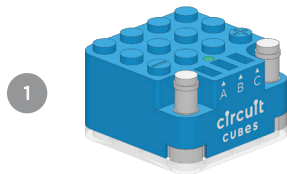
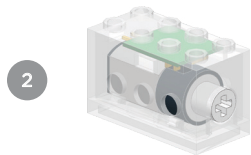
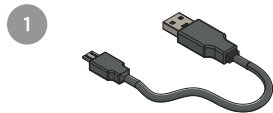


# APP SETTINGS

Control your vehicle with either the Tank or Gamepad modes. Your wires are connected to outputs A and C. You do not use output B for the XB-A1, but you may use it for other builds.



# PARTS



3

5

