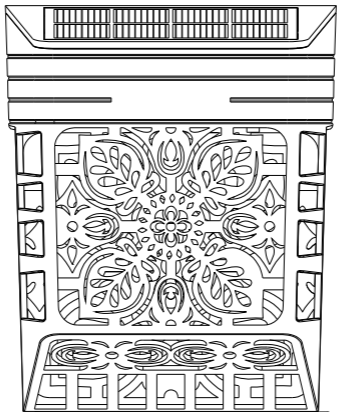


LOFTEK®



RGB Solar Fence Light

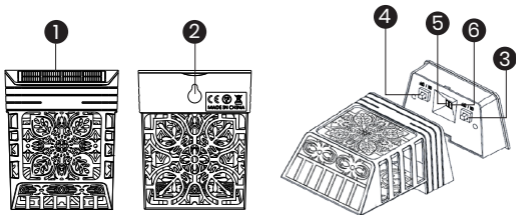
USER MANUAL

DAYLIGHT & RGB MODE

LOFTEK upgraded solar fence lights are equipped with 2 lighting modes: Warm white and 7 colors changing RGB. The warm white mode is suitable for daily lighting and decoration to your pathway, fence, decks, yards, and swimming pool.

Switch it to the RGB mode, 7 different colors will be fade in and out as they change, specially fits for festival décor. With build-in sensor and automated switch, the light turns on automatically at night or in dark place and turns off automatically during the day or in bright place. Absorbing 6-8 hours of sunlight will provide 10-12 hours of lighting at night.

CONSTRUCTION



- ① Solar Panel
- ② Screw Hole
- ③ On/OFF Switch
- ④ RGB Color Switch
- ⑤ Warm White LED Bead
- ⑥ RGB Color LED Bead

INSTALLATION

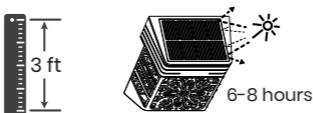
Step 1: Turn on the Light

Pressing the On/OFF switch at the bottom to turn on the solar light.



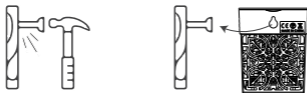
Step 2: Install the item under the place where the sunlight exposes directly.

We recommend installing the item at height of 3 feet on the fence or wall and keep the solar panel under ideal bright sunlight to make sure it receives at least 6-8 hours direct sunlight to fully charge the battery.



Step 3: Install the light and hang it

Use a tool to drill one hole in the desired location. Gently hammer the pillar-hinges into the hole and fasten screw into the pillar-hinges. Then hang the lamp on the screw.



Technical Parameters

Model:	SLR0601YC
Product name :	Solar Fence Light
Size:	4.1*3.3*2.1 inch
Material:	Plastic
Ni-MH Battery:	1.2V NI-MH AA600mAh(included)
Solar Panel :	0.35W
LED beads :	2 pc
IP Rating:	IP54

Product charging and working temperature

Charging Temperature :	0°C~+55°C
Working Temperature :	-18°C~+55°C
Charging Time :	6-8 hours
Working Time :	10-12 hours

Packing list

- Solar Fence Lamp
- Expansion Pillar-hinge
- Screw
- User Manual



Warm Tips

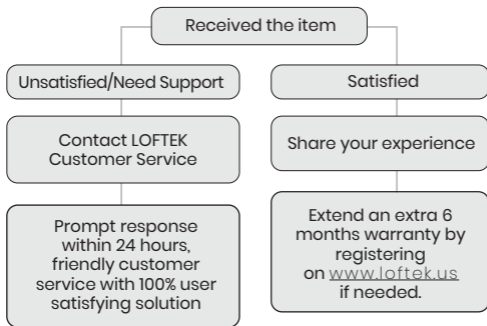


- 1). Before the first use, please make sure the solar light be charged under sunlight for 8-12 hours.
- 2). The solar light needs to be placed somewhere which can get direct sunlight regularly.
- 3). Solar panel surface must be kept clean to absorb sunlight effectively.
- 4). The installation location must be far from other light sources, otherwise it may cause the light does not work.
- 5). Please make sure to turn on the switch before use.
- 6). In winter or rainy days, insufficient sun absorption will directly affect the brightness and working hours.

Warranty and Customer Service

- 30-Day Money-Back Guarantee;
- 6-Month Free Replacement for Product Quality Issue;
- Lifetime Customer Support.

Customers' satisfaction means the world to us! If you encounter any problem, please do not hesitate to contact us at techsupport@loftek.us for assistance.



EU REP

AMZLAB GmbH
Laubenhof 23, 45326 Essen, Germany

UK REP

THEMIS AR support ltd
85 Great Portland St, London, United Kingdom, W1W 7LT