



SORELLE GALLERY
FINE ART

The 2021 Holiday Gift Guide



Sorelle's 2021 Holiday Gift Guide outlines a curated selection of original small paintings and drawings, sculpture and textiles, customizable prints, and more, which make for perfectly unique, one-of-a-kind gifts. Find more information on each of our Gift Collection categories below.

PAINTINGS AND DRAWINGS



Our collection of paintings and drawings are hand-selected, and feature a range of art styles from highly abstract pieces by artists like Kelly Rossetti or Teodora Guererra, to vibrant landscapes by Carol Young.

Original artwork in this category is, on average, 12" x 12" or less, and sold ready to hang.

Original paintings and drawings make excellent gifts for the art lover, collector, or design aficionado in your life.



SHOP IT: Imperial Sand Dune #5 by Alina B



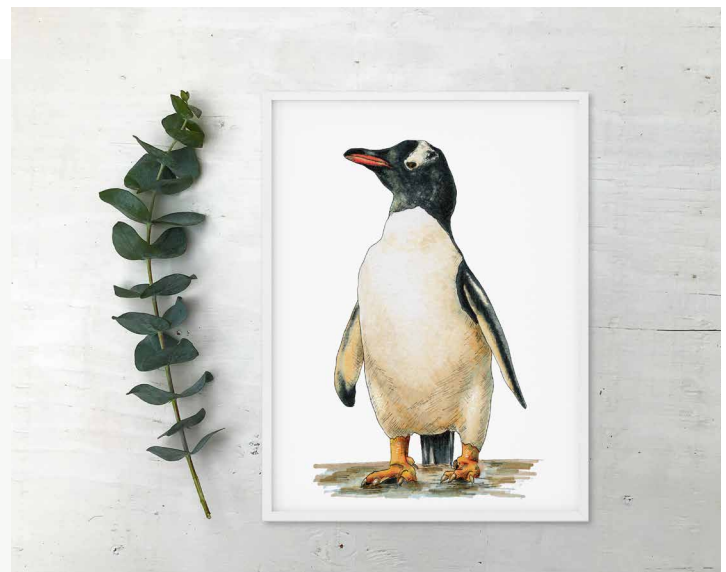
SCULPTURE AND TEXTILES

Our giftable sculptures and textiles include ceramic vessels, pumpkins, and lit trees by Jon Puozuoli, many of which are embellished with glazed crystals and 18K gold luster, as well as woven alpaca wool scarves by Dolores Tema. Shop this category if you're looking for decorative, seasonal, or functional art.



OPEN AND LIMITED EDITION PRINTS

Our open and limited edition prints are a perfect option for gifting, because they're customizable by size, style, and frame, and prices start at \$30. Not only that, but we're entering the 2021 holiday season with new, expanded framing options for our paper prints! Gifting a print is as unique as it is budget-friendly.



FINE ART PILLOWS




Our fine art pillows use real art images created by our artists, which are then printed onto premium, linen-feel pillows. They are available in three sizes: 20"x12", 18"x18", and 22"x22".

Pillow details:

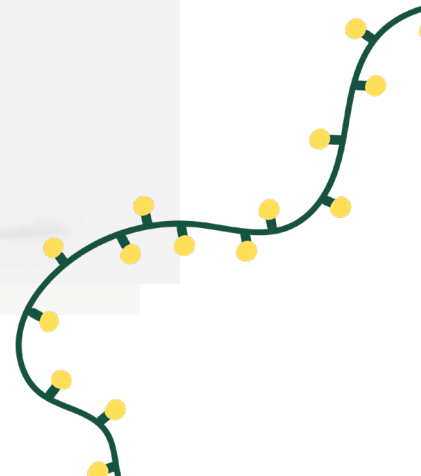
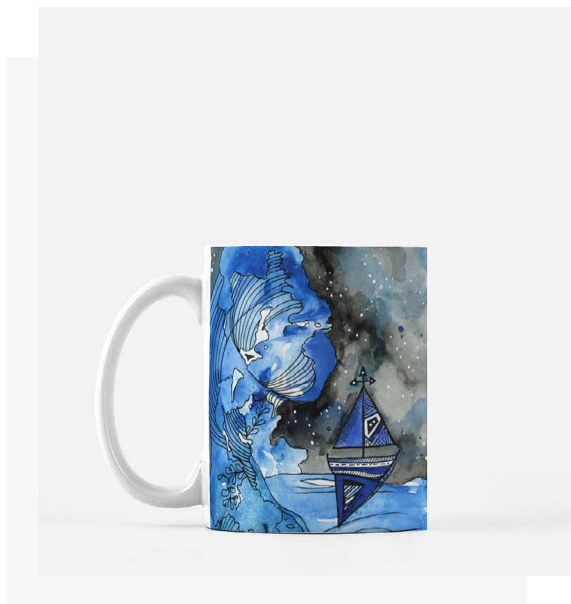
- 100% pre-shrunk polyester case
- Fabric with a linen feel
- Hidden zipper
- Machine-washable case
- Shape-retaining 100% polyester insert included (handwash only)

We love these pillows because you obviously can never have too many pillows, but they can be gifted to family, friends, or... well... yourself.

 SHOP IT: Mediterranean Vibes Throw Pillow by Hazal Ozturk

DRINKWARE AND ACCESSORIES

Know any coffee lovers? What about wine lovers? Our artsy mugs and wine totes will fill the void for the beverage-obsessed in your life. Wine totes are made with 100% neoprene and fit one 750mL wine bottle. The art is printed on both sides and stores easily as it lays flat without a bottle. Our 11oz mugs are 100% ceramic, and dishwasher and microwave safe.



PETS

Pets are a part of the family, so there's no reason to not get them a fancy gift this year, too. Treat your furry fam to a new ceramic food bowl or get all dressed up with a Soft Spun Poly pet bandana.



GIFT CARDS



Art is so personal it can be difficult to select the right thing for the right person. Enter: Gift Cards.

Simply checkout online, and your unique gift card code will be emailed to you after you complete your purchase, which you can print out and gift. Or, keep it eco-friendly and forward it on to your special someone! It can be used both in-store and online.

To summarize: When in doubt, go with a gift card.

All items in the 2021 Holiday Gift Guide can be found in the Gift Collection under the main Shop tab on sorellegallery.com. For questions, please contact us at info@sorellegallery.com.

Happy Holidays from Sorelle!