



iNPLANT™

Instructions for Use

WI-003 Rev.H

REF

IN-001

1566 Lemoine Ave Fort Lee, NJ 07024

US Patent # 9,925,028

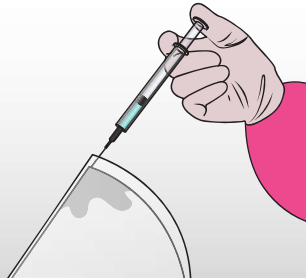
Other US and Worldwide

Patents Pending

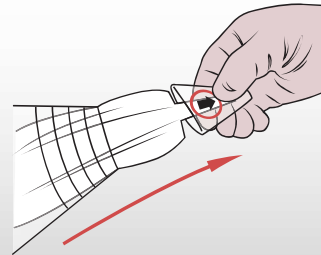
1 Lubricate

Inject 60cc of Sterile Saline and/or antibiotic solution into the funnel's top Injection Port.

(Witness the liquid's total absorption into the funnel's wicking fabric)

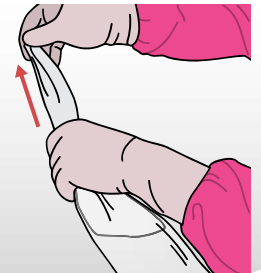


Open the funnel's distal opening by pulling on the pull tab



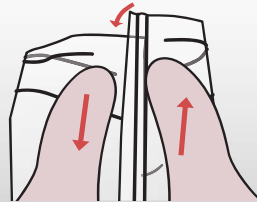
Drag the wicking fabric through the funnel to evenly paint the inner walls with the injected solution

(The lubricious coating is now activated)

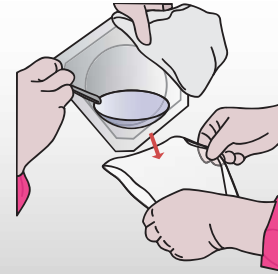


2 Load

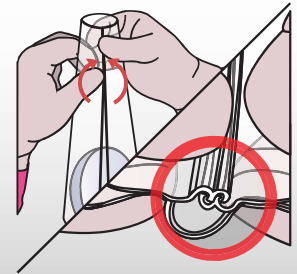
Orient the funnel so the GlideTrack is on top. Using your thenar muscles, slide the right track upward, and slide the left track downward. Using your right index finger, pull the extruded right track towards yourself to release the track. Glide the rest of the track open to fully open the funnel.



Load the implant from the blister pack using the no-touch technique



Fully seal the GlideTrack by re-engaging both teeth forcefully in both directions. Slide up and down the track to confirm a tight seal.



3 Deliver

Slide the implant back and forth within the funnel to ensure the lubrication of both the implant and the funnel. Pour out any excess saline.



Trim the funnel to size using serrated or curved mayo scissors.



Using your Dominant hand, cinch the proximal end of the funnel until the implant crowns at the distal opening. Using your non-dominant hand, apply forceful pushes towards the rear of the implant to drive it out of the funnel.



iNPLANT™ Instructions for Use

WI-003 Rev.H

REF IN-001

1566 Lemoine Ave Fort Lee, NJ 07024
US Patent # 9,925,028
Other US and Worldwide
Patents Pending



24/7
Instructional Hotline

201-961-5084



Address

1566 Lemoine Avenue,
Fort Lee, NJ 07024



E-mail

orders@inplantfunnel.com



Customer Service

201-913-8833
Fax: 201-351-3593

STERILE R

**Sterilized by
Gamma**



**Lower Limit
Temperature**



Use By Date



Non-Phthalate



Do Not Reuse



Do Not Resterilize



**Date
Manufactured**



**Consult Instructions
for Use**



Manufacturer



Caution



Keep Dry



Catalog Number



Batch Code



**Not made with Natural
Rubber Latex**



**DO NOT use the
product if the
package has
been opened or
damaged**



**U.S. Federal Law
restricts this device to
sale by or on the order
of a licensed physician**

Description

The iNPLANT!™ is a sterile, transparent, cone-shaped sleeve constructed of a flexible, Pthalate-free polymeric film and has a lubricious hydrophilic coating on the inside surface.

Intended Use

The iNPLANT!™ is intended to facilitate the delivery of silicone gel implants by providing a shell-tissue interface with less friction during insertion of the implant. It is also intended to facilitate implementation of a "no-touch technique" in implant insertion.

Product Warranty

Proximate Concepts, LLC stands behind the iNPLANT (TM) funnel. Please contact our customer service department if you have any issues using the funnel.