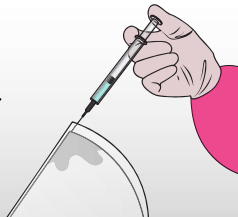


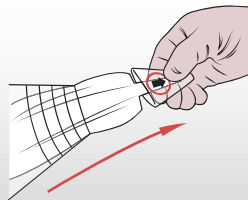
1 Lubricate

Inject 60cc of sterile saline with or w/o antibiotic solution into the funnel's top Injection Port.

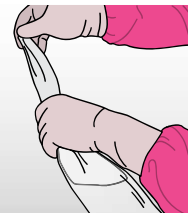
(Ensure the entire wicking fabric is wet)



Open the funnel's distal opening by pulling on the pull tab.



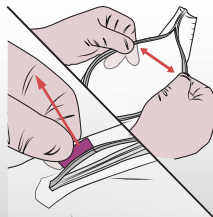
Drag the wicking fabric through the funnel to evenly paint the inner walls with the injected solution.



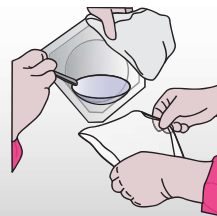
2 Load

On the back side of the funnel, gently pull on the pink release tab to release the GlideTrack.

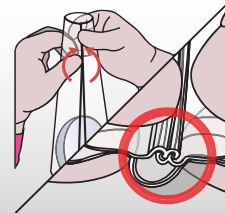
Once slightly opened, using a sterile instrument or your fingers, open the rest of GlideTrack.



Holding the funnel open, pour the lubricated implant into the funnel using the "no touch technique".



Fully seal the GlideTrack by re-engaging both teeth forcefully in both directions. Apply pressure up and down the track to confirm a tight seal.



3 Deliver

Slide the implant back and forth within the funnel to ensure the lubrication of both the implant and the funnel. Pour out any excess saline.



Depending on the size of the implant, you may wish to trim the opening using serrated or curved Mayo scissors.



Using your non-dominant hand, knuckles up, squeeze and cinch behind the implant. Insert at the incision site. Deploy the implant out of the funnel.





Instructions For Use

IFU-003 Rev. A

REF IN-001

Proximate Concepts LLC
6 Pearl Court Suite H, Allendale NJ 07401
Phone: 201-913-8833 Fax: 201-351-5393
Email: contact@inplantfunnel.com

INTRODUCING...

iNPLANT!

(Version 3)



Easier Opening | Stronger Materials | Double Delivery

Description

The iNPLANT™ is a sterile, transparent, cone-shaped sleeve constructed of a flexible, Pthalate-free polymeric film and has a lubricious hydrophilic coating on the inside surface.

Intended Use

The iNPLANT™ is intended to facilitate the delivery of silicone gel implants by providing a shell-tissue interface with less friction during insertion of the implant. It is also intended to facilitate implementation of a "no touch technique" in implant insertion.

Product Warranty

Proximate Concepts, LLC stands behind the iNPLANT™ Funnel. The iNPLANT™ Funnel warranty is available online at inplantfunnel.com/returns

US Patents # 9,925,028 and # 10,575,936

Other US and Worldwide Patents Pending

REF

Catalog Number

LOT

Batch Code

STERILE EO

Sterilized by Ethylene Oxide



Store at Room Temperature (18°C - 25°C)



Use By Date



Non-Phthalate



Do Not Reuse



Not made with Natural Rubber Latex



Date Manufactured



Do Not Resterilize



Manufacturer



Consult the Instructions for Use



Keep Dry



Caution



DO NOT use the product if the package has been opened or damaged

Rx ONLY

U.S. Federal Law restricts this device to sale by or on the order of a licensed physician