

# CITY COFFEE GUIDE

7 CAFES - 3 DAYS



M O R N I N G



**NYLON COFFEE  
ROASTERS**

**STRANGERS  
REUNION**

**CHYE SENG HUAT  
HARDWARE**

**APARTMENT  
COFFEE**

**COMMON MAN  
COFFEE ROASTERS**

**TOBY'S ESTATE**

**HOMEGROUND  
COFFEE ROASTERS**

# ITINERARY

## DAY 1

TANJONG PAGAR

**NYLON COFFEE  
ROASTERS**

**STRANGERS REUNION**

## DAY 2

LAVENDAR

**CHYE SENG HUAT  
HARDWARE**

**APARTMENT COFFEE**

## DAY 3

RIVER VALLEY

**COMMON MAN  
COFFEE ROASTERS**

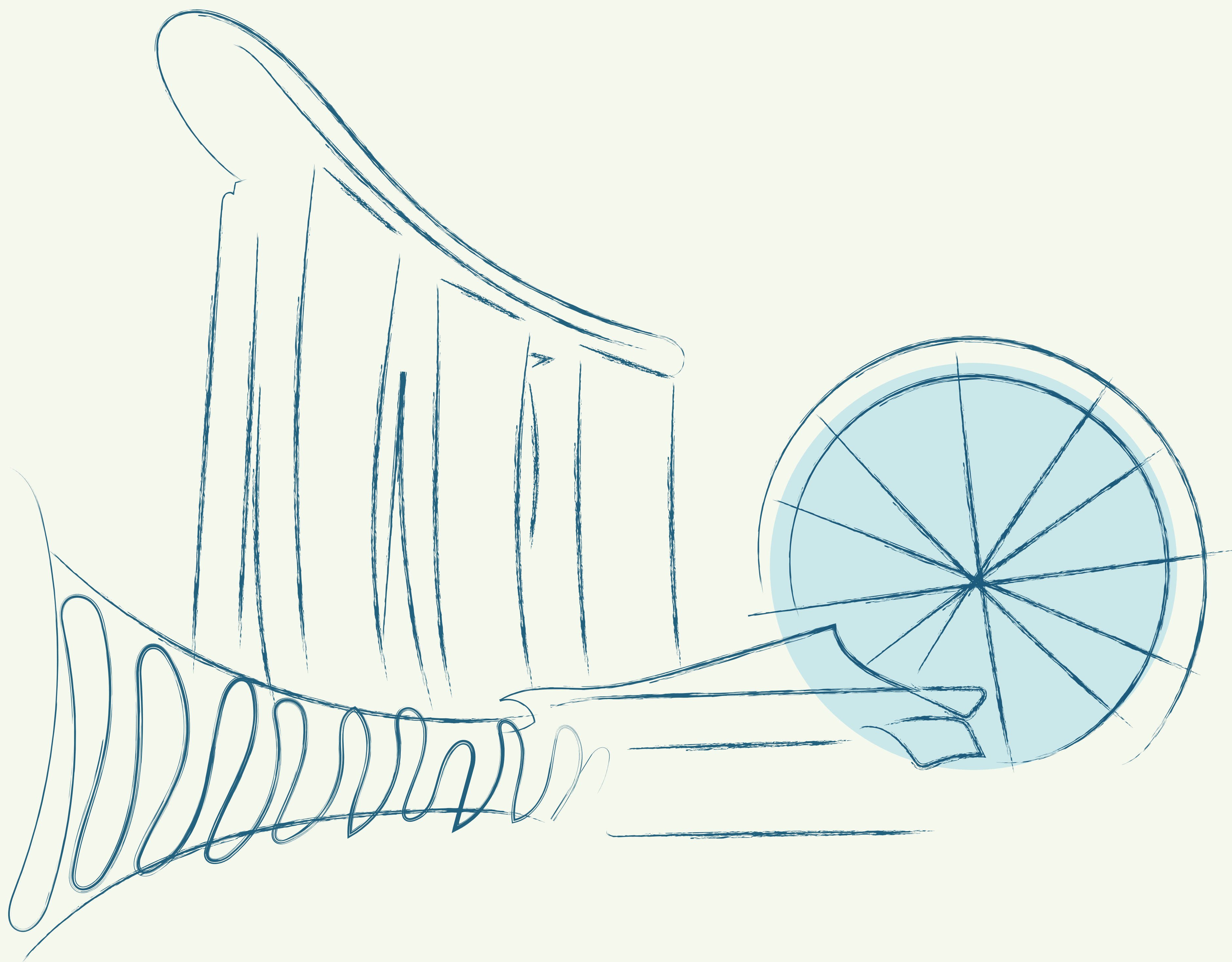
**TOBY'S ESTATE**

## BONUS

**HOMEGROUND  
COFFEE ROASTERS**



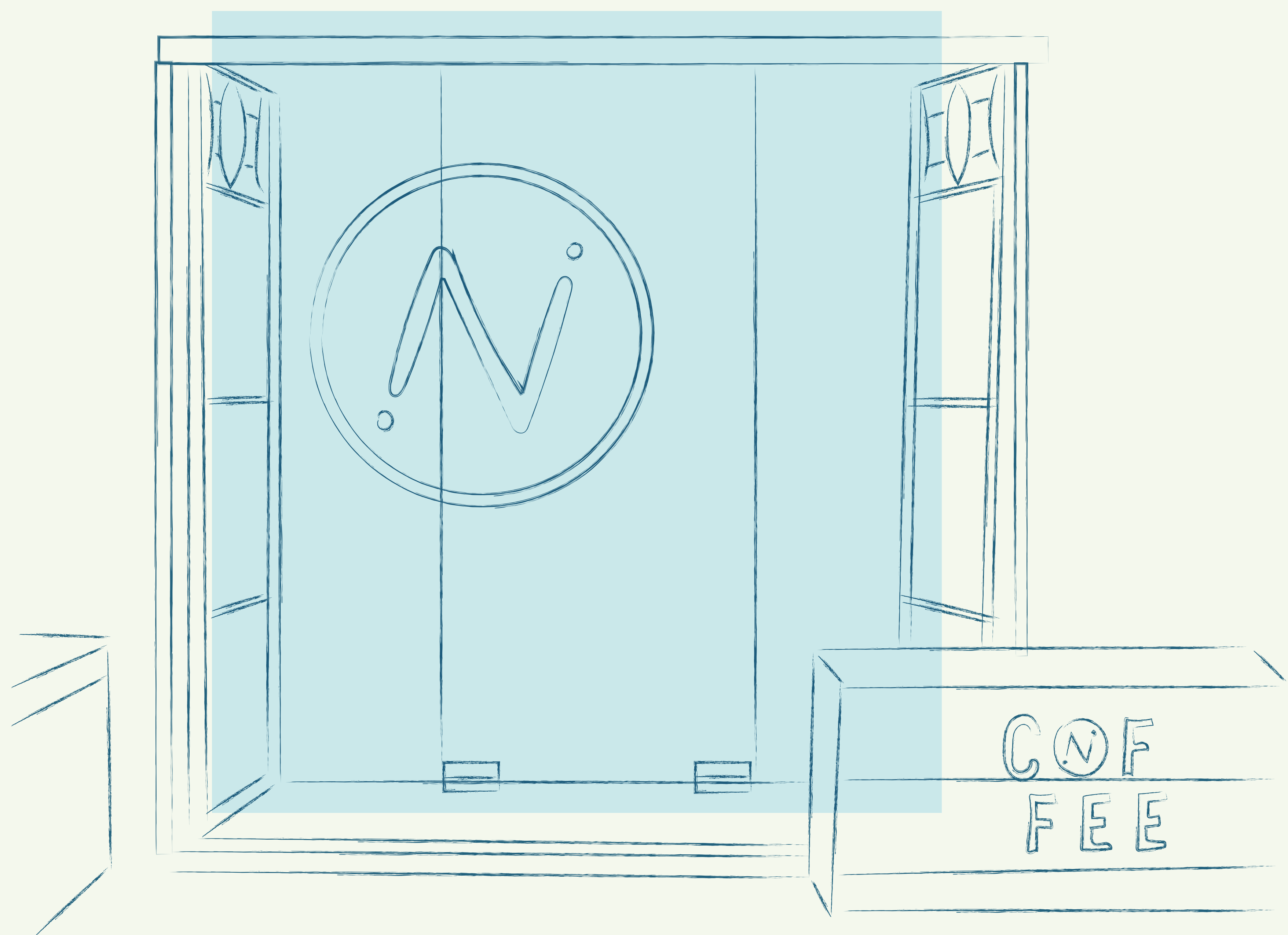
# SINGAPORE COFFEE GUIDE



As far as cosmopolitan cities go, Singapore may be my all time favorite. The country is just a beautiful melting pot of different cultures, and it's always such a joy to walk the stretch of Orchard Road then see the interactions of different cultures and races. A lot of people come for the food, others come for the shopping, but I personally come for the coffee. Though Singapore is famous for its traditional kopi, it has also garnered a reputation for being one of Southeast Asia's most popular hotbeds for specialty coffee, and while trying to visit every shop might be a bit of a stretch, we've made a short coffee crawl itinerary that's sure to satisfy without getting your heart racing.



NYLON COFFEE ROASTERS



**WHY?** Some shops take their coffee seriously, and then there’s Nylon Coffee Roasters. From their base at Everton Park, Nylon has been serving some of the best coffee this side of Asia, thanks in part to a serious dedication to sourcing the very best coffees from origin. Though the space is quaint, it’s all you really need to enjoy a great cup of coffee.

**WE RECOMMEND:** Coffees change seasonally, but you can’t go wrong with their single origin selection on filter.

**ESTIMATED CAFFEINE LEVEL:** 140MG



 **Nylon Coffee Roasters**  
4 Everton Park, #01-40  
Singapore 080004  
M-F: 8:30AM - 5:30PM  
S-S: 9:00AM - 6:00PM

 [nyloncoffee.sg](http://nyloncoffee.sg)  
 [@nyloncoffee](https://www.instagram.com/nyloncoffee)



STRANGERS REUNION




**WHY?** Just a short walk from Nylon will bring you to Strangers Reunion, where the spirit of competition runs in their veins (or in the coffee). Being home to multiple coffee competition champions, the shop also knows to deliver a great brunch to pair with your coffee of choice.

**WE RECOMMEND:** Have a bit of, well, Magic at Strangers Reunion. The Magic is their signature beverage, and can be had in the cafe, as well as taken away in bottle form.

**ESTIMATED CAFFEINE LEVEL:** 70MG

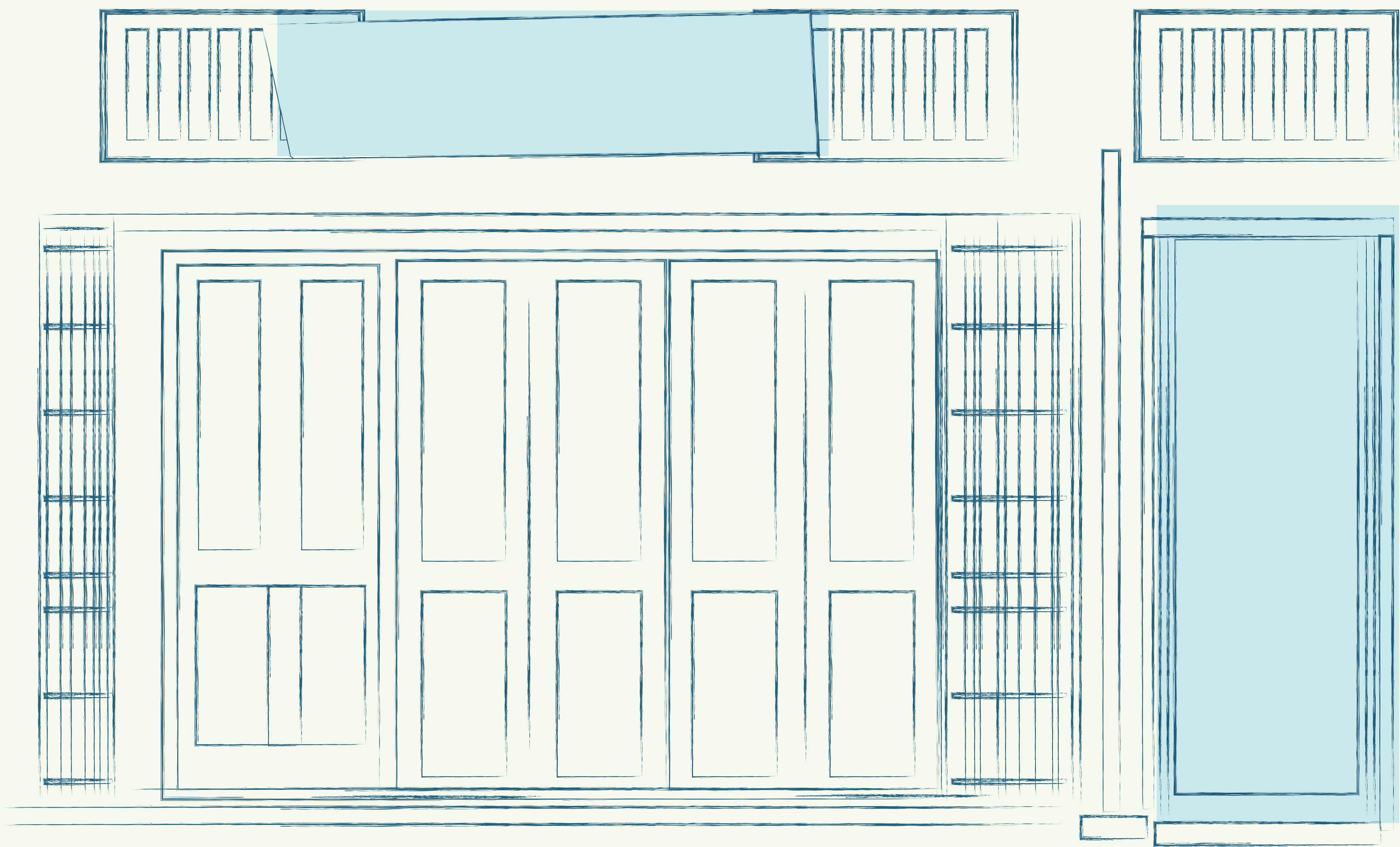


 Strangers Reunion  
33/35 Kampong Bahru Rd, Singapore 169356  
M-S: 9:00AM - 6:00PM

 strangersreunion.com  
 @strangersreu



# CHYE SENG HUAT HARDWARE (CSHH)




**WHY?** You'd be hard pressed to find a coffee lover in Singapore who wouldn't rave about PPP Coffee. The former Papa Palheta is an institution of specialty coffee in Singapore, serving coffee at Chye Seng Huat Hardware and even at a new location at Funan Mall. A decade of serving great coffee has made PPP not just a must visit, but a pseudo-pilgrimage for every coffee lover.

**WE RECOMMEND:** Have a nice flat white or latte to start off your day, and sit by the round bar that lets you get a look at all the action as it happens.

**ESTIMATED CAFFEINE LEVEL:** 140 MG



 **Chye Seng Huat Hardware (CSHH)**  
150 Tyrwhitt Road,  
Singapore 179105  
M - Closed  
T-Th, Sun -  
9:00AM - 10:00PM  
F-Sat -  
9:00AM - 12:00MN

 [www.cshhcoffee.com](http://www.cshhcoffee.com)  
 @cshhcoffee



APARTMENT COFFEE



WHY?


Just a stone’s throw away from PPP is Apartment Coffee, a relatively new specialty coffee shop in Singapore (at least against this list). Filter Coffees are the highlight of this beautiful space founded by Yeo Qing He, a semi finalist of the 2018 World Brewers Cup. The minimalist, all-white interiors help to really put the focus where it needs to be, which is with the exceptional coffees brewed at the bar.

WE RECOMMEND:

Take a pick from any of their filter coffees, you surely won't be disappointed.

ESTIMATED CAFFEINE LEVEL: 140MG



 **Apartment Coffee**  
161 Lavender St. #01-12,  
Singapore 338750  
M-S: 9:00AM - 6:00PM

 [www.apartmentcoffee.co](http://www.apartmentcoffee.co)  
 @apartmentcoffee



COMMON MAN COFFEE ROASTERS



WHY?

On a nondescript street in Singapore, you'll find Common Man Coffee Roasters. Part brunch hot-spot and part coffee lovers hideaway, this venerable institution is probably one of Singapore's most well known, thanks in part to its fledgling wholesale program that's taken it to different parts of Asia. Swing by in the morning to grab some brunch and pair it with a nice cup of their single origin coffees, or even one of their special house blends.

WE RECOMMEND:

Their nitro cold brew is one of the best in town, and pair it with a great brunch to start your day.

ESTIMATED CAFFEINE LEVEL: 250MG



**Common Man Coffee Roasters**  
#01, 22 Martin Road,  
Singapore 239058  
M-F: 7:30AM - 5:00PM  
S-S: 7:30AM - 6:00PM

 commonmancoffeeroasters.com

 @commonmancoffee



TOBY'S ESTATE



WHY?


A short walk from Common Man will bring you to Toby's Estate from Australia. Opening its flagship store back in 2011, the roaster / cafe hasn't looked back, with a wide election of different coffee and food choices.

WE RECOMMEND:

You simply can't go wrong with getting a classic Flat White. If you're more of a sweet tooth, the Mocha would be a better way to go.

ESTIMATED CAFFEINE LEVEL: 80MG



 **Toby's Estate**  
8 Rodyk St,  
Singapore 238216  
Sun-Th:  
7:30AM - 6:00PM  
F-Sat:  
7:30AM - 7:00PM

 [tobysestate.com.sg](http://tobysestate.com.sg)  
 @tobysestatesg



HOMEGROUND COFFEE ROASTERS



WHY?

Homeground is a micro roaster on the east side of Singapore, a corner away from the famous 328 Katong Laksa. They're home to the 2019 Singapore Brewers Cup Champion and the 2018 Singapore Aeropress Champion, so you know that they take their brewing seriously. If you want to get a feel for classic Singapore and have a great cup of coffee to go with it, then Homeground is definitely the place to visit.

WE RECOMMEND:

Have a nice cup of filter coffee, and enjoy the feel of old school Singapore right outside the door.

ESTIMATED CAFFEINE LEVEL: 140MG





**Homeground Coffee Roasters**  
475 Joo Chiat Road,  
Singapore 427682  
M-S: 9:00AM - 6:00PM  
W: Closed



homegroundcoffeeroasters.com



@homeground.coffee



# HAPPY CAFE HOPPING!

**FOLLOW US**



@drinkmorning



@drinkmorning

**M O R N I N G**

[www.drinkmorning.com](http://www.drinkmorning.com)