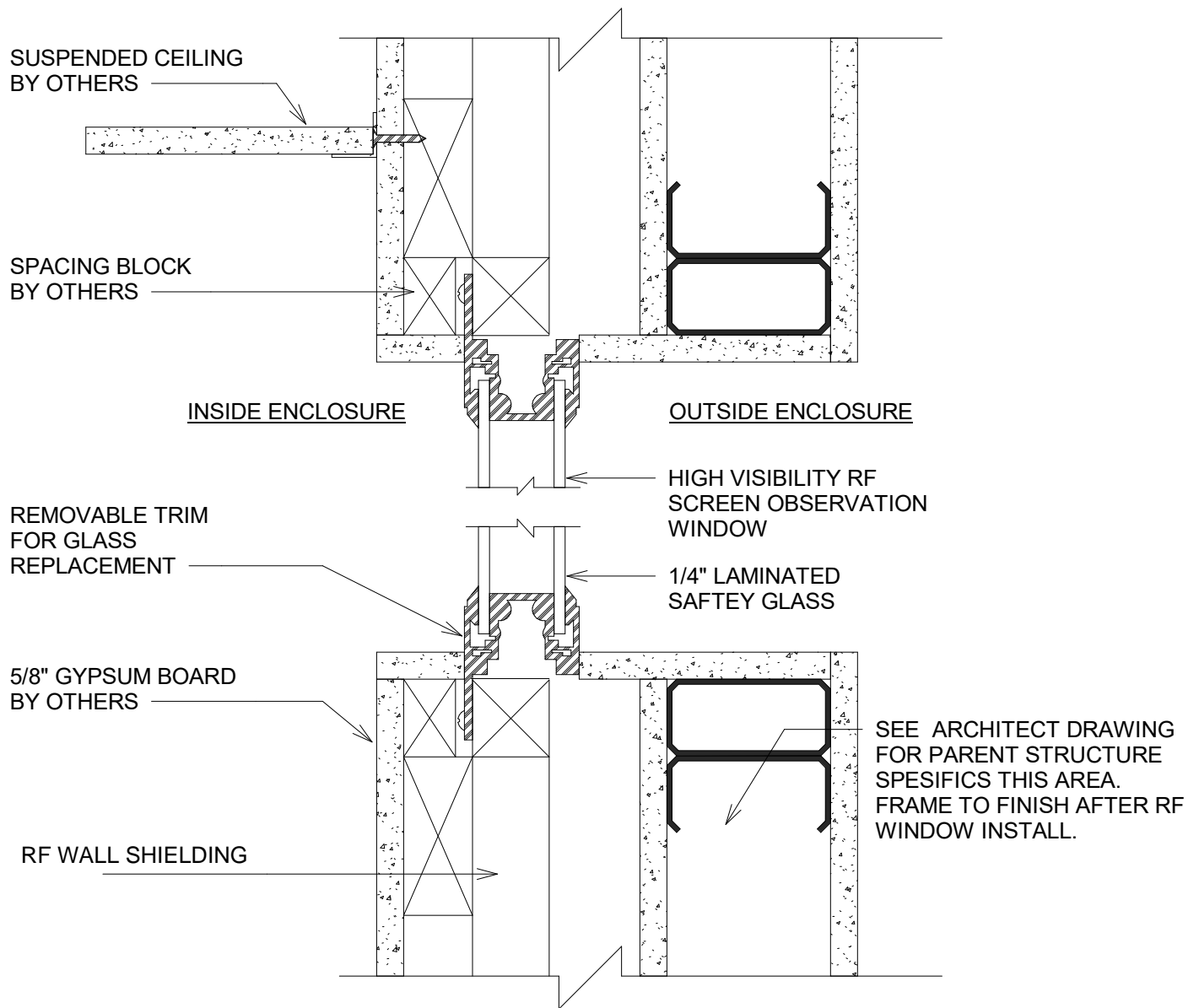


RF MRI WINDOW DETAIL



- **LIGHTWEIGHT: ALUMINUM FRAME**
- **HIGH VISIBILITY GLASS: NO MOIRÉ PATTERN**
- **IMPACT RESISTANT: LAMINATED SAFETY GLASS**
- **AESTHETICALLY PLEASING: NON-REFLECTIVE BLACK COATING**
- **SOUND CONTROL: STC 40**



JOB NAME:

ADDRESS:

DRAWING NAME:

RF MRI WINDOW DETAIL

DRAWING SCALE:

3" = 1' - 0"

PREPARED :