

Lead Glass Pro

www.leadglasspro.com

Lead X-Ray Glass

Brand Name: XtraClear X-Ray Glass by Lead Glass Pro

Technical Data

Thickness: 5/16" (8.4mm)

Thickness Tolerance: +/- 0.030"

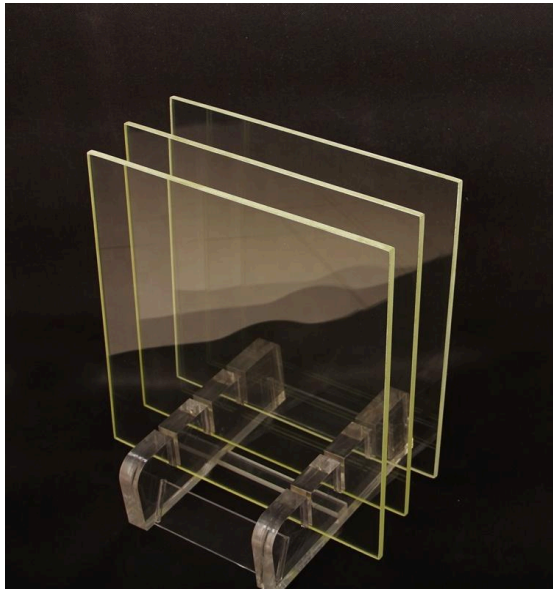
Lead Equivalency @ 150 KVP: 2mm - 5#

Other Lead Equivalencies Available Upon Request

Weight Per Square Foot: 8.5#

Light Transmission: 85%+

Density (g/cm³) ≥ 4.8



Product Overview

- 60% minimum heavy metal oxide content
- 55% minimum lead oxide content

Clean and Handle with Care

- Clean lead glass with a soft dry or damp microfiber cloth only
- Lead glass will absorb harsh chemicals and stain easily
- Lead glass scratches easily

Optional

- Permanently labeled as safety glass meeting ANSI Z97.1 and CPSC 16 CFR Part 1201 Cat I
- Safety glass is required in doors, within 24" of a door, and within 18" of a floor
- Other lead equivalencies are available. It is the customer's responsibility to verify the proper lead equivalency



Lead Glass Pro

www.leadglasspro.com

Lead Lined Window Frame With X-Ray Glass

Product Overview

Comes Pre-Glazed with X-Ray Lead Glass

Internally Lead Lined (No Exposed Lead)

Over 70 Lead Thicknesses Available

Hundreds of Stock Sizes for Quick Shipping

Adjustable Window Frame Fits Any Wall
Thicknesses Between 4.25" to 8"

Standard Sizes Ship in 3 to 4 Days

Window Frames Come with a Primer Finish,
Ready to Paint.

Rough Opening Size is 1" over the order size
(ex: 24" x 24" will have a 25" x 25" rough
opening)

Visible Glass Size is 1-1/4" Under Order Size
(ex: 24" x 24" will have a 22-3/4" x 22-3/4"
visible glass size)

Outside Dimensions of the Frame is 4-1/2"
larger than the order size (ex: 24" x 24" will
have a 28-1/2" x 28-1/2" O.D.)

Glass Contains 55% Minimum Lead Oxide
Content

Our lead glass meets Federal Specification
DD-G-451, ASTM C1036, NCRP Report #49,
NCRP Report #147, and ICRP lead glass
criteria and standards

Clean and Handle with Care

- Clean lead glass with a soft dry or damp
microfiber cloth only

- Lead glass will absorb harsh chemicals
and stain easily

- Lead glass scratches easily

Optional

- Permanently labeled as safety glass
meeting ANSI Z97.1 and CPSC 16 CFR Part
1201 Cat I

- Safety glass is required in doors, within 24"
of a door, and within 18" of a floor

- Other lead equivalencies are available. It is
the customer's responsibility to verify the
proper lead equivalency



Lead Glass Pro

www.leadglasspro.com

Lead Lined Door Lite Kit With X-Ray Safety Glass

Product Overview

Comes Pre-Glazed with X-Ray Safety Glass

Internally Lead Lined (No Exposed Lead)

2mm Lead Equivalency (Unless Otherwise Noted)

Hundreds of Stock Sizes for Quick Shipping

Fits 1- $\frac{3}{4}$ " Thick Doors

Standard Sizes Ship in 3 to 4 Days

Door Lite Frames Come with a Primer Finish,
Ready to Paint.

Your cut-out size is the order size (ex: 6" x 24" will have a 6" x 24" door cut-out)

Your visible glass size will be 1" under order size (ex: 6" x 24" will have a 5" x 23" visible glass size)

Glass Contains 55% Minimum Lead Oxide Content

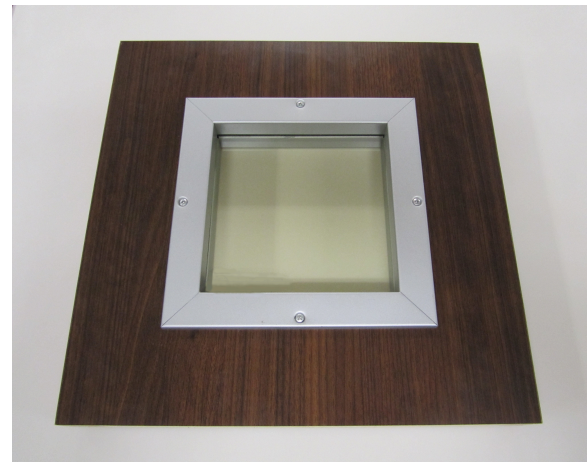
Our lead glass meets Federal Specification DD-G-451, ASTM C1036, NCRP Report #49, NCRP Report #147, and ICRP lead glass criteria and standards

Clean and Handle with Care

- Clean lead glass with a soft dry or damp microfiber cloth only
- Lead glass will absorb harsh chemicals and stain easily
- Lead glass scratches easily

Optional

- Other Door Thicknesses are Available
- Powder Coat Finish
- Other lead equivalencies are available. It is the customer's responsibility to verify the proper lead equivalency



Lead Glass Pro

www.leadglasspro.com

X-Ray Shielded Integral Mini Blind IGU

Technical Data

Hermetically Sealed Insulated Integral Mini Blind Glass Units

Thickness: 1-³/₈"

Thickness Tolerance: +/- 0.030"

Lead Equivalency @ 150 KVP: 2mm - 5#

Other Lead Equivalencies Available Upon Request

Weight Per Square Foot: 11#

Light Transmission: 85%+



Product Overview

60% minimum heavy metal oxide content

55% minimum lead oxide content

Standard Mini Blind Blade Color Options: White, Silver, Cream

Operation: Tilt Only or Lift and Tilt

Operator location: Customer chooses between top left or top right

Operator style: Customer chooses Knob or Wand (for tilt only), or Cord (for lift and tilt)

Clean and Handle with Care

Clean lead glass with a soft dry or damp microfiber cloth only

Lead glass will absorb harsh chemicals and stain easily

Lead glass scratches easily

Optional

Permanently labeled as safety glass meeting ANSI Z97.1 and CPSC 16 CFR Part 1201 Cat I

Other lead equivalencies are available. It is the customer's responsibility to verify the proper lead equivalency



Lead Glass Pro

www.leadglasspro.com

X-Ray Shielded Fire Rated Insulated Glass Units

Technical Data

Hermetically Sealed Insulated Fire Rated Glass Units

Thickness: 1" (depends on options)

Lead Equivalency @ 150 KVP: 1/16" - 4#

Other Lead Equivalencies Available Upon Request

Weight Per Square Foot: 12#

Fire rated for up to 90 minutes in walls and doors, and up to 180 minutes in temp-rise doors



Product Overview

60% minimum heavy metal oxide content

55% minimum lead oxide content

Fire rating: 20, 45, 60, 90, 120, and 180 minute depending on requirements

Meets: UL 10C, UBC 7-2, and UBC 7-4

Maximum size: 96" x 48" (changes based on fire rating)

Clean and Handle with Care

Clean lead glass with a soft dry or damp microfiber cloth only

Lead glass will absorb harsh chemicals and stain easily

Lead glass scratches easily

Optional

Permanently labeled as safety glass meeting ANSI Z97.1 and CPSC 16 CFR Part 1201 Cat I

Other lead equivalencies are available. It is the customer's responsibility to verify the proper lead equivalency



Lead Glass Pro

www.leadglasspro.com

Lead Lined Wood Door

Product Overview

Thickness: 1-3/4"

Stock Doors Ship in 3 to 4 Days

Standard Finish is Natural Birch

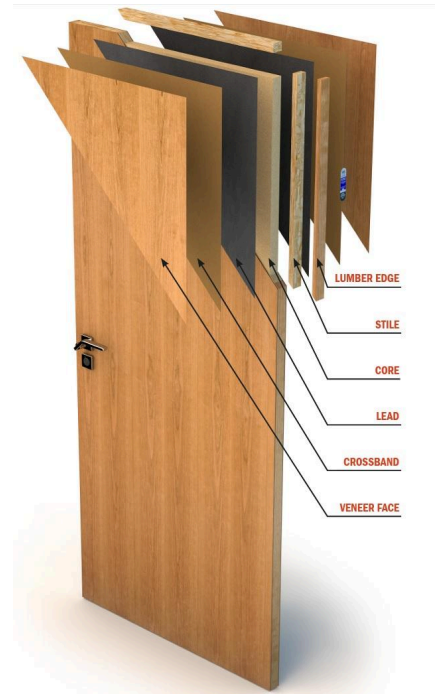
Optional Wood Finishes Include: Cherry, Mahogany, Maple, Oak, and Walnut

Optional Laminate Finishes Include: WilsonArt, Formica, Nevamar, and Pionite

Weight #/Sq.Ft.: 9.5# with 1/16" Lead

Optional

- Lead Lined Door Lite Kits with X-Ray Safety Glass
- Lead Lined Door Frame
- Prepped to Customers Requirements
- Door Hardware Including Hinges, Locksets, Astragals, Door Sweeps, Door Viewers



Lead Glass Pro

www.leadglasspro.com

Lead X-Ray Glass

Product Overview

Thickness: 1-3/4"

Fully Prepped to Customer's Requirements

A40 Galvannealed Steel

Rust Preventing Primer Coat

Over 70 Lead Thicknesses Available

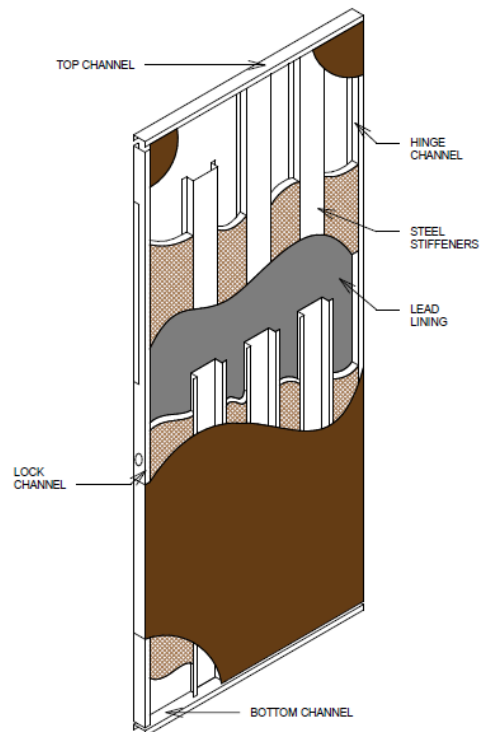
99.9% Pure Lead Meeting Federal Specs
QQ-L-201F Grade C

Flush Top/Bottom Channels



Optional

- Lead Lined Door Lite Kits with X-Ray Safety Glass
- Lead Lined Door Frame
- 14, 16, or 18 Gauge Thickness
- A60, G90, or CRS Available
- Door Hardware Including Hinges, Locksets, Astragals, Door Sweeps, Door Viewers
- Fire Ratings up to 90 Minutes
- Plastic Laminate Faces



Lead Glass Pro

www.leadglasspro.com

Lead Lined Lockset

Technical Data

Lead Lined Schlage Cylindrical Lever Lockset

1/16" Lead Lining

In Stock - Ships in 1 day

Free Shipping

Internally Lead Lined

Prevents Exposed Lead



Product Overview

Door Thickness:
1-5/8" to 2-1/8"
(41mm-54mm)
standard

Backset: 2-3/4"

Lock Chassis: Zinc plated for corrosion resistance.

Cylinder & Keys: 6-pin Everest C123 keyway standard

ANSI: Meets or exceeds A156.2 Series 4000, strength and operational requirements. Meets A117.1 Accessibility Code.

Federal: Meets FF-H-106C Series 161.

California State Reference Code (CSFH) (Formerly Title 19, California State Fire Marshal Standard): All levers with less than 1/2" (64mm) returns comply with California Fire Safety Codes.

3/4" and 1/2" throw latch approved for Hurricane Resistance with Miami-Dade County, Florida and the Florida Building Commission.

UL/cUL: All locks listed for A label single fire door 4' x 8' or 4' x 10' 3-hour; pair doors 8' x 8' 3-hour; and 8' x 10' 90-minute. Letter F and UL symbol on latch front indicate listing.

Optional

Other Lead Thicknesses Available



Lead Glass Pro

www.leadglasspro.com

Lead Backed Drywall

Product Overview

60 Minute Fire Rated USG Type X Drywall

Thickness: 5/8"

Ready to Ship in 2 to 3 Days

Standard size is 4ft x 7ft lead on 8ft board

11 Standard Lead Thicknesses Ranging From 1/64" (1#) to 1/4" (16#)

Includes one 2" vertical batten strip per sheet for joints and 50 lead discs for screw heads

Lead height is the federal minimum of 7'0"



Optional

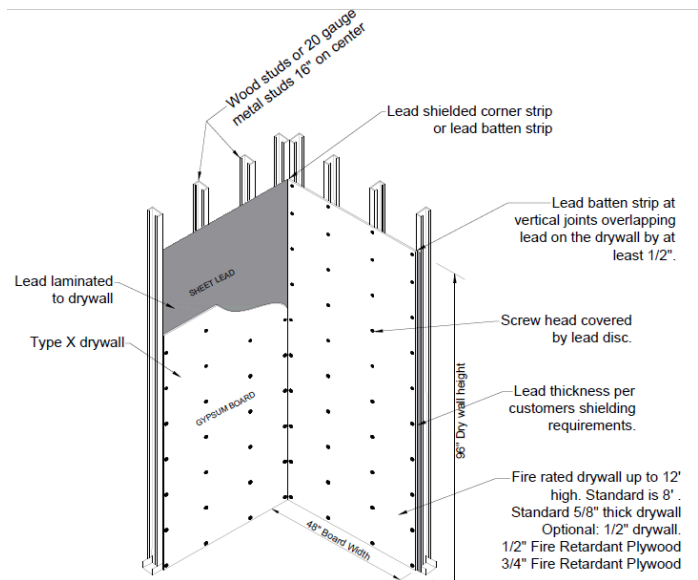
- Other Lead Thicknesses Available

- Lead Backed Fire Retardant ACX Plywood for Lead Thicknesses from 1/8" to 2"

- Any Board Height up to 12'

- Mold Resistant or Abuse Resistant Board

Installation and Storage Instructions are Available upon Request



Lead Glass Pro

www.leadglasspro.com

Pure Lead Sheet



Product Overview

Standard size is 4 ft x 7 ft and 4 ft x 8 ft.

Available in sizes up to 20 ft x 100 ft

Typical fabrication time is 2 days.

Available in 17 lead thicknesses

Can be cut and bent in the field to form around penetrations

Can be laminated to drywall or plywood

Meets FED Specifications ASTM B749-03 & QQ-L-201f Grade C



Lead Glass Pro

www.leadglasspro.com

Lead Batten Strips

Product Overview

Lead Thicknesses Available From 1/32" to 1/8"

For Lead Backed Drywall Joints

Installed Before Lead Backed Drywall

Ready to Ship in 2 to 3 Days

Standard size is 2" x 84"

Any Height up to 12' is Available

Lead height is the federal minimum of 7'0"



Lead Corners

Product Overview

Lead Thicknesses Available From 1/32" to 1/8"

For Lead Backed Drywall Corner Joints

Installed Before Lead Backed Drywall

Ready to Ship in 2 to 3 Days

Standard size is 2" + 90 Degree Bend + 2" x 84" High

Any Height up to 12' is Available

Lead height is the federal minimum of 7'0"



Lead Glass Pro

www.leadglasspro.com

Mobile X-Ray Barriers

Product Overview

Overall height is 75" to fit under standard door ways

Available sizes:

33.5" x 75" with 30" x 48" X-Ray Lead Glass

33.5" x 75" with 30" x 60" X-Ray Lead Glass

52.5" x 75" with 48" x 30" X-Ray Lead Glass

75.5" x 75" with 72" x 36" X-Ray Lead Glass

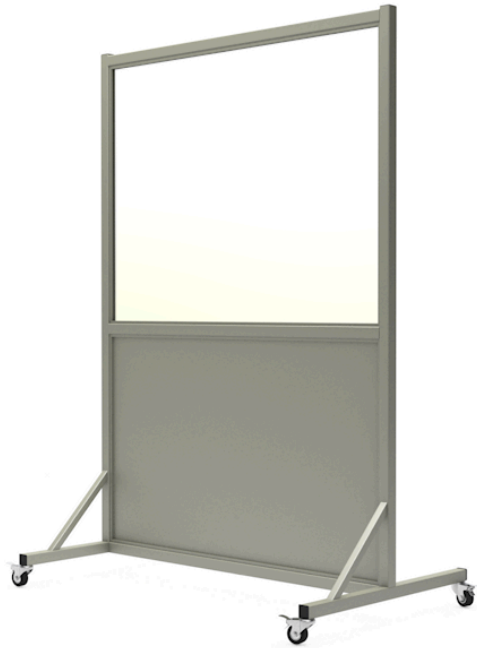
2mm (5#) Lead Equivalency

Smooth surface to maintain hospital infection control protocols

Non-marring wheels with foot activated locks

Shipping weight: 220# to 320# - A forklift is recommended for offloading. Liftgate delivery is available.

Installation and Storage Instructions are Available upon Request



Lead Glass Pro

www.leadglasspro.com

Lead Backing for Electrical Boxes

Product Overview

Lead Thicknesses Available from 1/16" to 1/8"

This product ships within 2 business days

Our lead backing for electrical boxes are designed for 16" on center stud spacing.

Our pre-formed lead backing is available in several different lead thicknesses depending on your wall shielding requirements.

Optional

Other Lead Thicknesses Available

Installation and Storage Instructions are Available upon Request



Lead Glass Pro

www.leadglasspro.com

Frame Lead Lining Kits

Product Overview

We offer lead lining kits so you can lead line your own hollow metal frames or knock-down frames, rather than having a custom lead lined frame fabricated. We offer the flat kits which you will have to bend to your frame profile or you can choose to have us factory form the lead to your unique frame profile. You can also contact us if you require a different lead equivalency or a larger lead lining kit.

Each kit includes 5 pieces 6" x 48" These lead lining kits can be used to lead line door frames up to 4' x 8' and window frames up to 4' x 4'

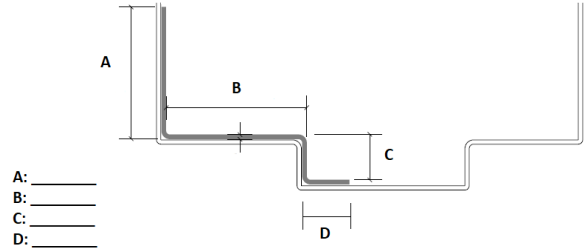
The current fabrication time is 2 to 3 days



Optional

- Other Lead Thicknesses Available

For pre-bent kits, fill out the form below with the dimensions required to fit your frame profile



Lead Glass Pro

www.leadglasspro.com

X-Ray Lead Vinyl

Product Overview

Available in 1mm lead equivalency

48" x 96" Rolls

Flexible and durable

Easy to clean

Uniform Density

Resistant to Abrasion, Acid, and Alkali

Optional

- Other Lead
Thicknesses Available

